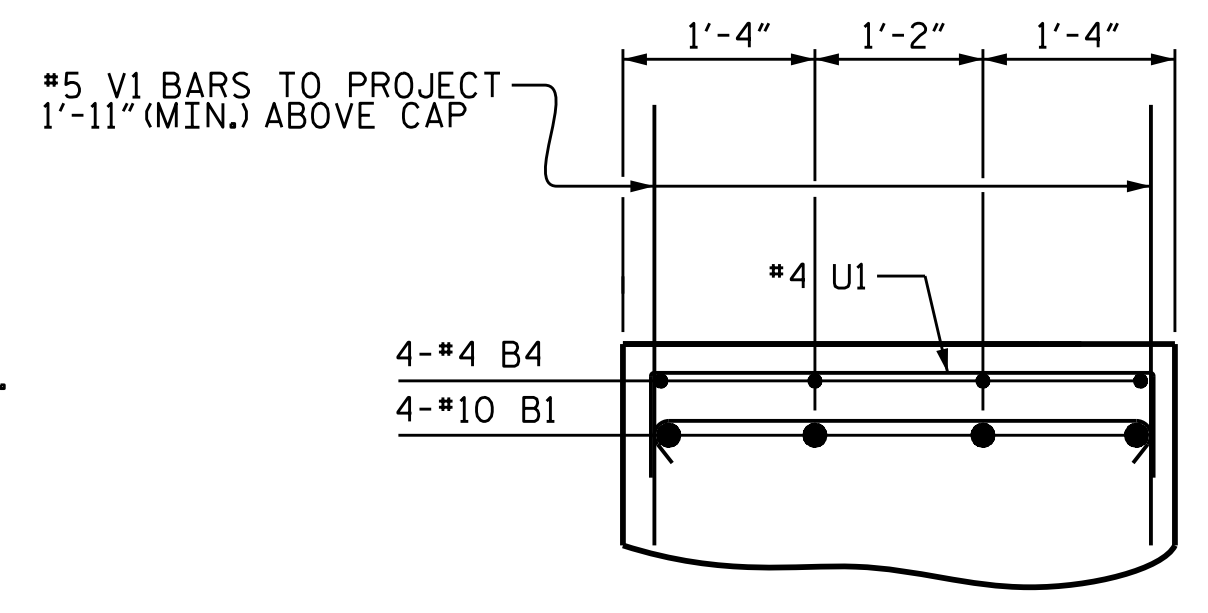
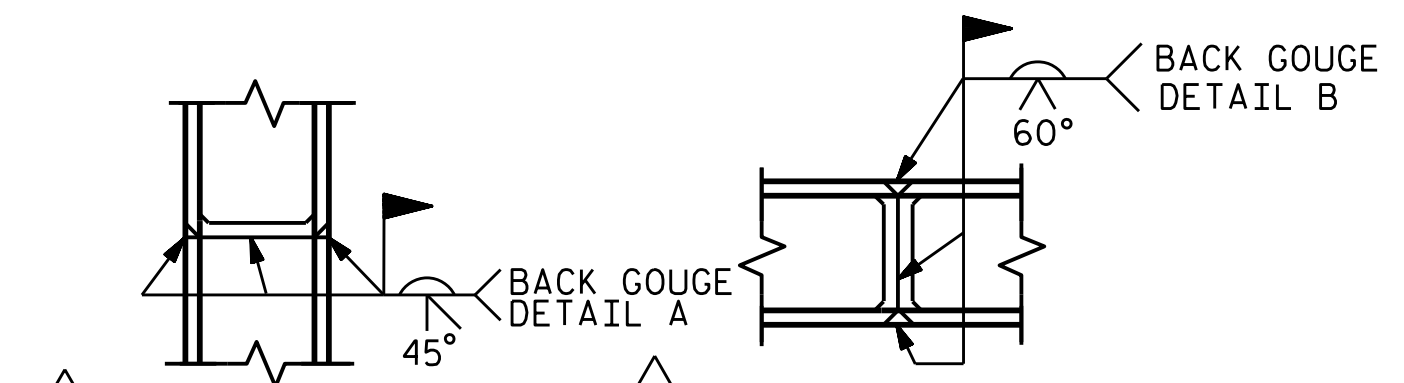


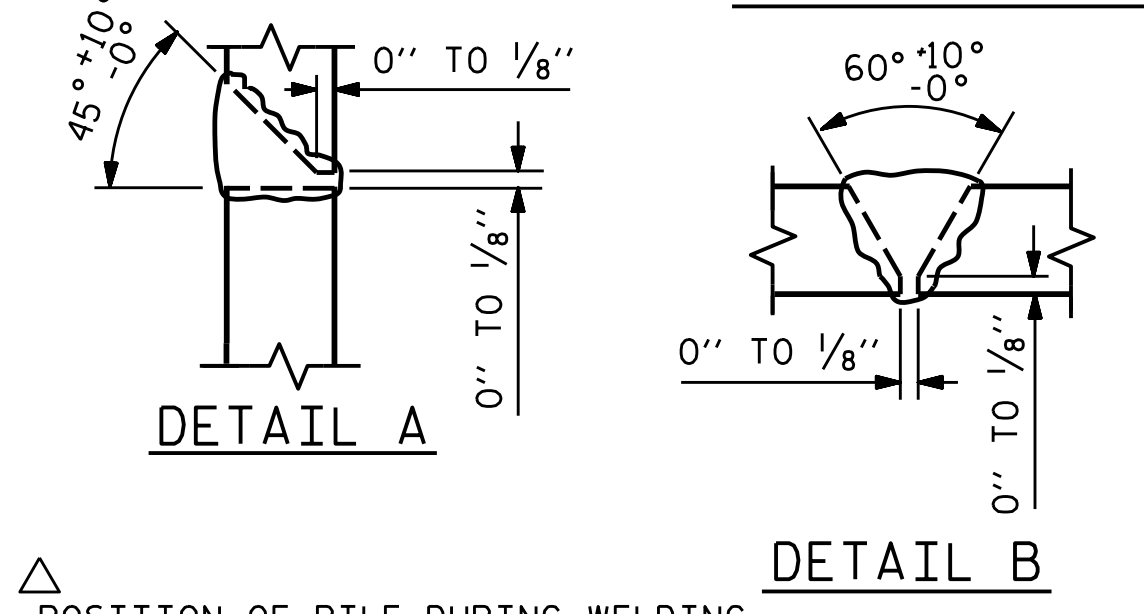
SECTION A-A



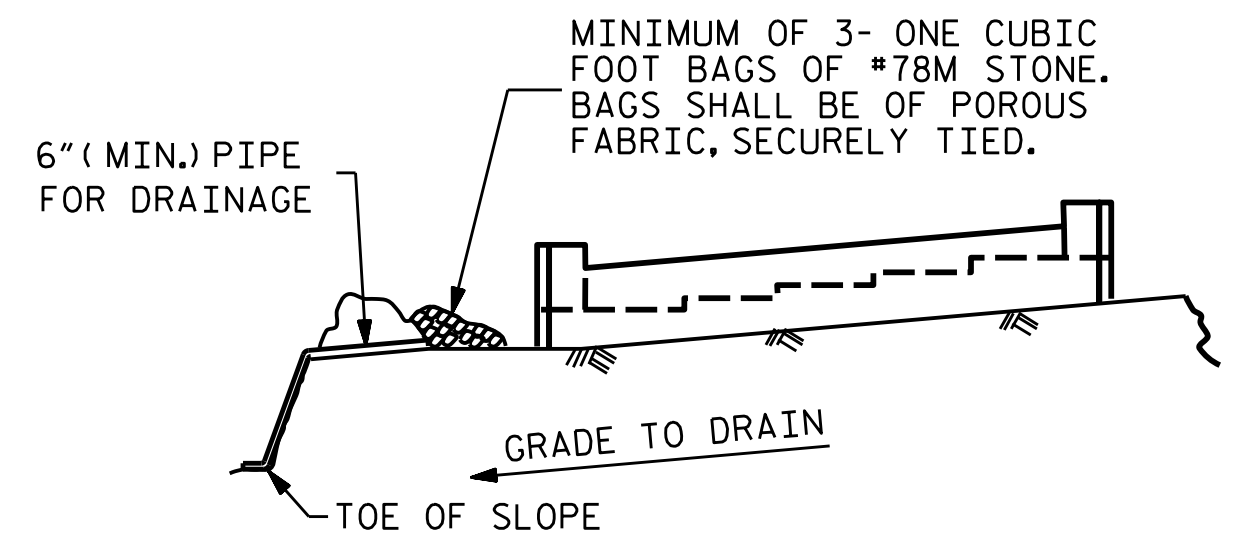
SECTION B-B



PILE VERTICAL PILE HORIZONTAL OR VERTICAL



PILE SPLICE DETAILS



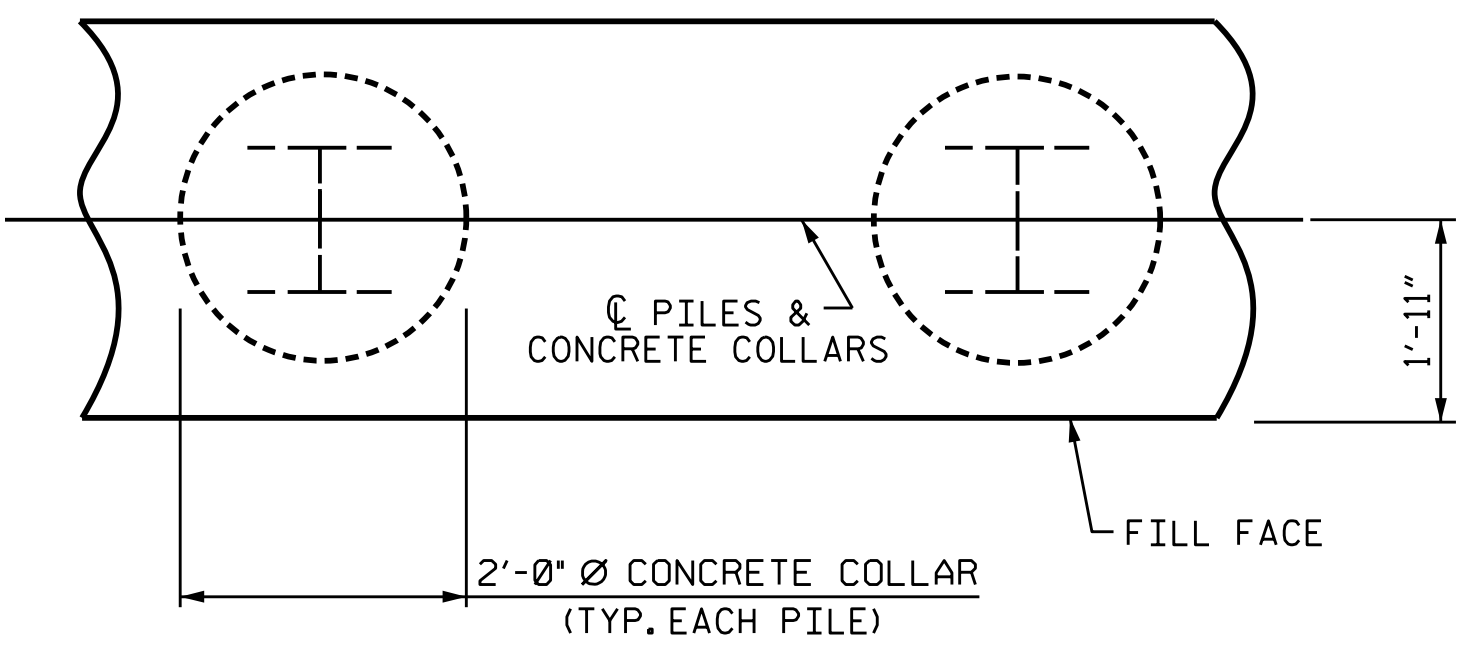
MINIMUM OF 3- ONE CUBIC FOOT BAGS OF #78M STONE. BAGS SHALL BE OF POROUS FABRIC, SECURELY TIED.

BAGGED STONE AND PIPE SHALL BE PLACED IMMEDIATELY AFTER COMPLETION OF END BENT EXCAVATION. PIPE MAY BE EITHER CONCRETE, CORRUGATED STEEL, CORRUGATED ALUMINUM ALLOY, OR CORRUGATED PLASTIC. PERFORATED PIPE WILL NOT BE ALLOWED.

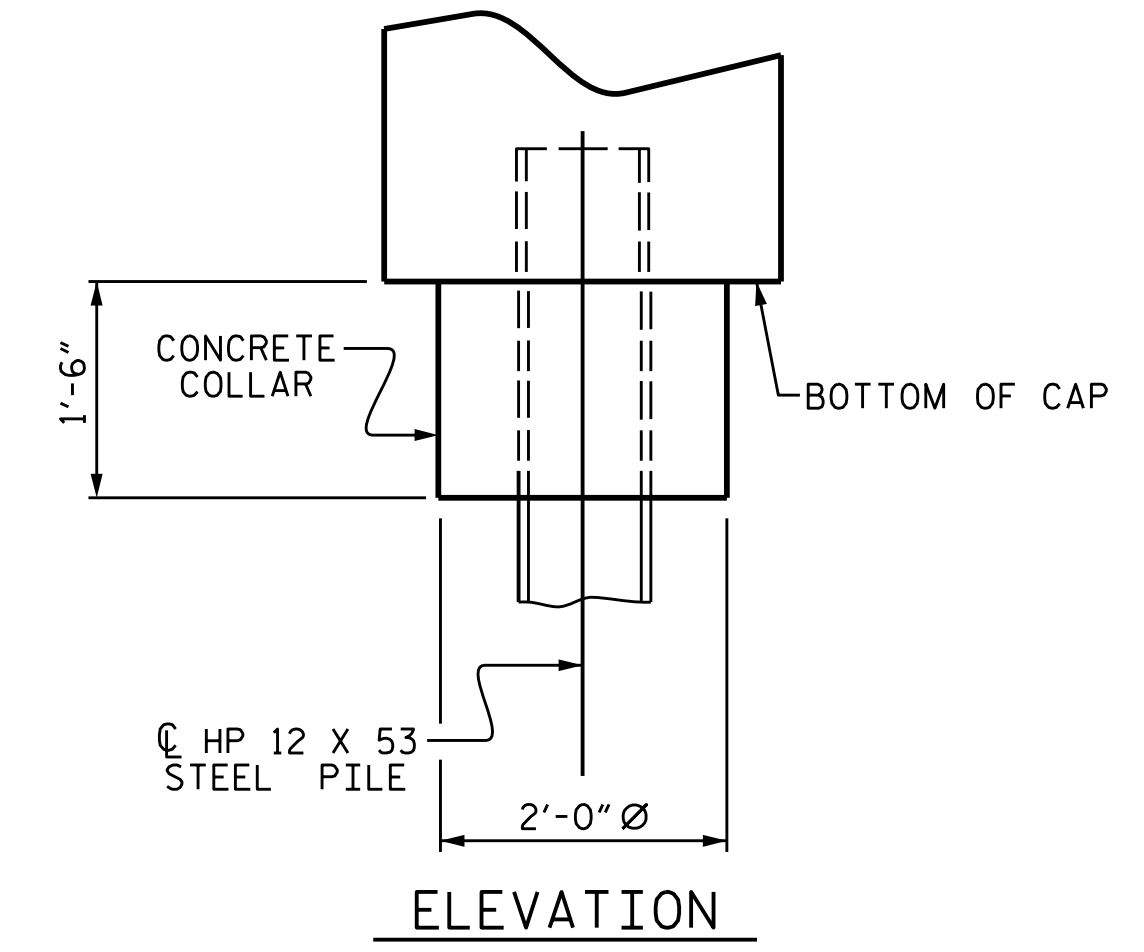
BAGGED STONE SHALL REMAIN IN PLACE UNTIL THE ENGINEER DIRECTS THAT IT BE REMOVED. THE CONTRACTOR SHALL REMOVE AND DISPOSE OF SILT ACCUMULATIONS AT BAGGED STONE WHEN SO DIRECTED BY THE ENGINEER. BAGS SHALL BE REMOVED AND REPLACED WHENEVER THE ENGINEER DETERMINES THAT THEY HAVE DETERIORATED AND LOST THEIR EFFECTIVENESS.

NO SEPARATE PAYMENT WILL BE MADE FOR THIS WORK AND THE ENTIRE COST OF THIS WORK SHALL BE INCLUDED IN THE UNIT CONTRACT PRICE BID FOR THE SEVERAL PAY ITEMS.

TEMPORARY DRAINAGE AT END BENT

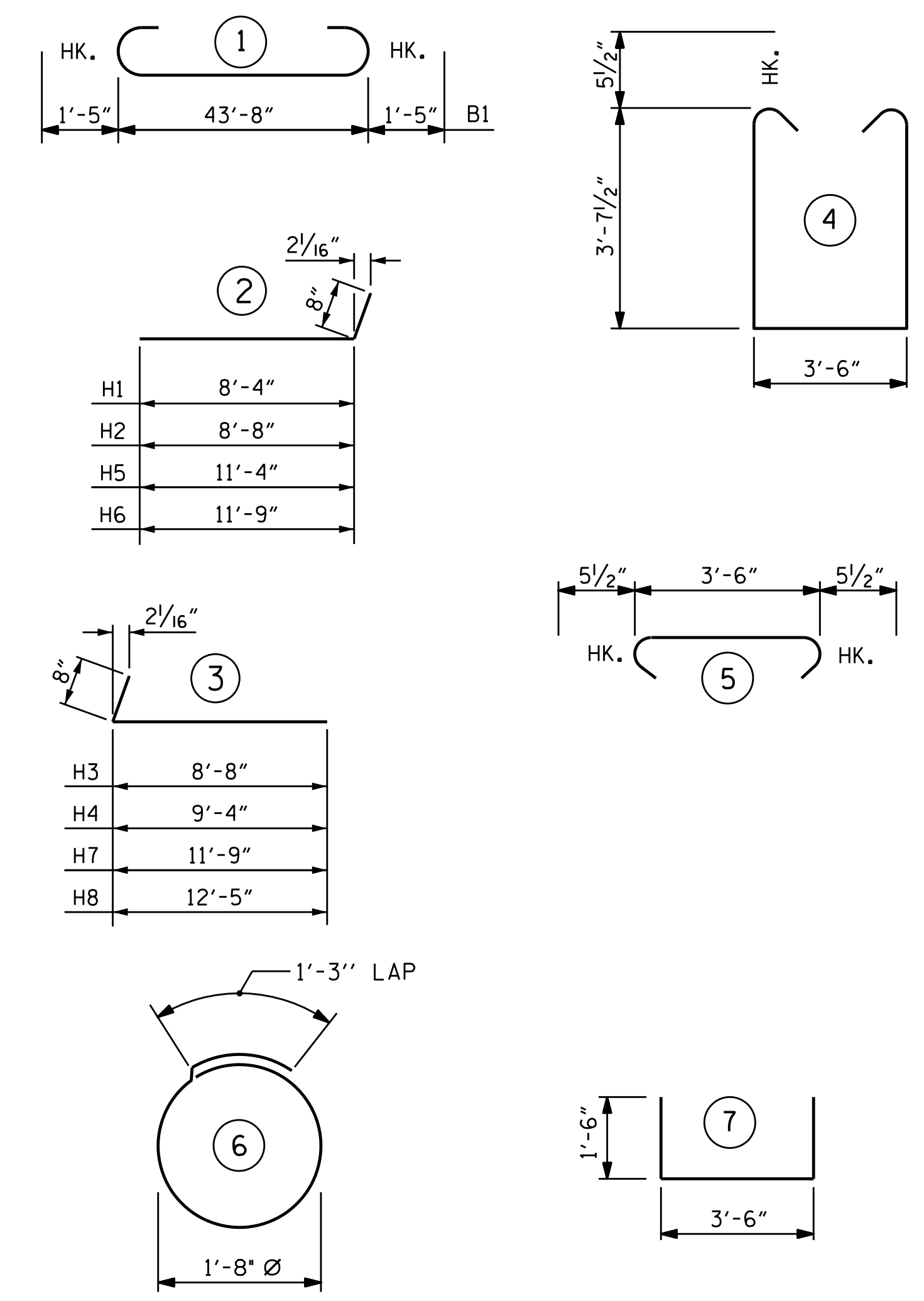


PLAN CORROSION PROTECTION FOR STEEL PILES DETAIL



ELEVATION

BAR TYPES



ALL BAR DIMENSIONS ARE OUT TO OUT.

BILL OF MATERIAL					
BAR	No.	SIZE	TYPE	LENGTH	WEIGHT
B1	8	#10		46'-6"	1601
B2	20	#4	STR.	23'-1"	308
B3	11	#4	STR.	3'-6"	26
B4	8	#4	STR.	10'-11"	58
H1	8	#5		9'-0"	75
H2	8	#5		9'-4"	78
H3	8	#5		9'-4"	78
H4	8	#5		10'-0"	83
H5	5	#5		12'-0"	63
H6	5	#5		12'-5"	65
H7	6	#5		12'-5"	78
H8	6	#5		13'-1"	82
K1	32	#4	STR.	3'-5"	73
S1	42	#5		11'-8"	511
S2	42	#5		4'-5"	193
S3	24	#5		6'-6"	163
U1	13	#4		6'-6"	56
V1	56	#5	STR.	6'-0"	350
V2	28	#5	STR.	9'-7"	280
V3	28	#5	STR.	10'-1"	294

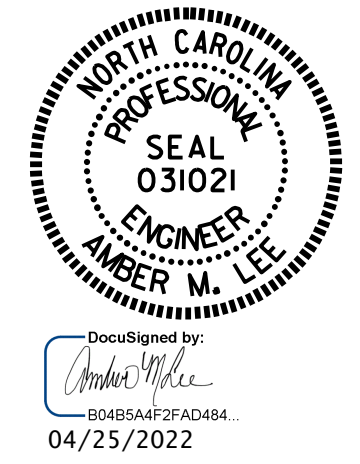
REINFORCING STEEL	4515 LBS.
CLASS "A" CONCRETE BREAKDOWN :	
POUR 1 (CAP, COLLAR, & LOWER PART OF WINGWALL)	30.2 C.Y.
POUR 2 (UPPER PART OF WINGWALL)	5.2 C.Y.
TOTAL CLASS "A" CONCRETE:	35.4 C.Y.
HP 12 X 53 STEEL PILE	
No 6	390.0 LF

PROJECT NO. BR-0051
YADKIN COUNTY
STATION: 18+34.78 -L-

SHEET 3 OF 3

STATE OF NORTH CAROLINA
DEPARTMENT OF TRANSPORTATION
RALEIGH

SUBSTRUCTURE
INTEGRAL END BENT 2



DRAWN BY :	C. RUIZ	DATE :	09/2020
CHECKED BY :	H.A. LOCKLEAR	DATE :	03/2022
DESIGN ENGINEER OF RECORD:	E. BAYISSA	DATE :	09/2020

DOCUMENT NOT CONSIDERED FINAL UNLESS ALL SIGNATURES COMPLETED	REVISIONS						SHEET NO. S-29 TOTAL SHEETS 32
	NO.	BY:	DATE:	NO.	BY:	DATE:	
	1			3			
	2			4			