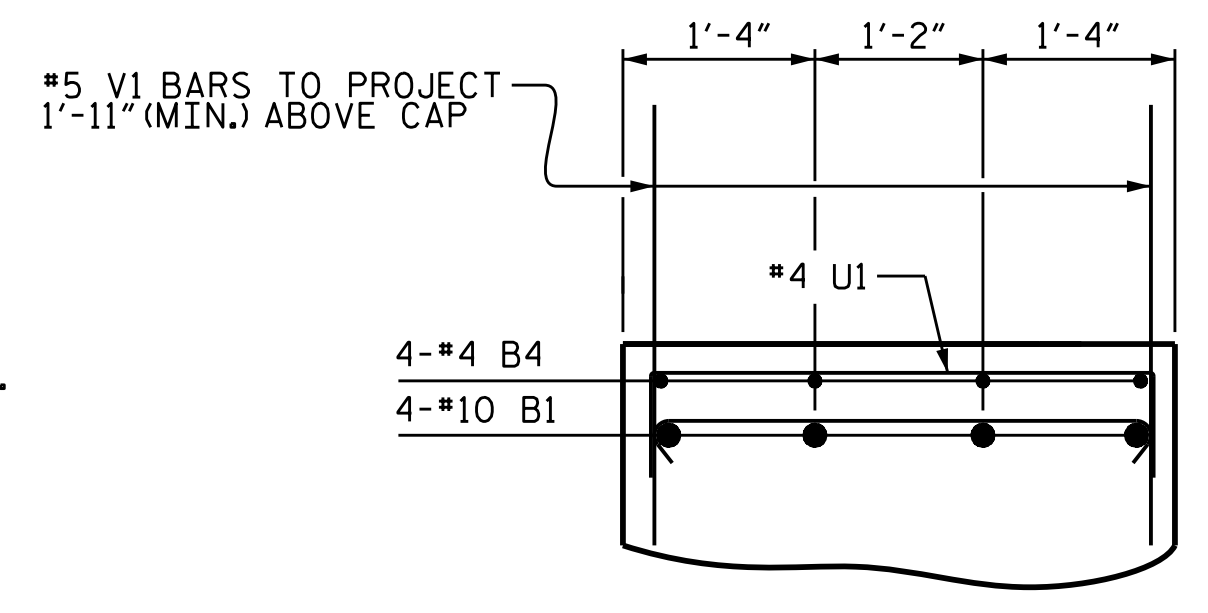
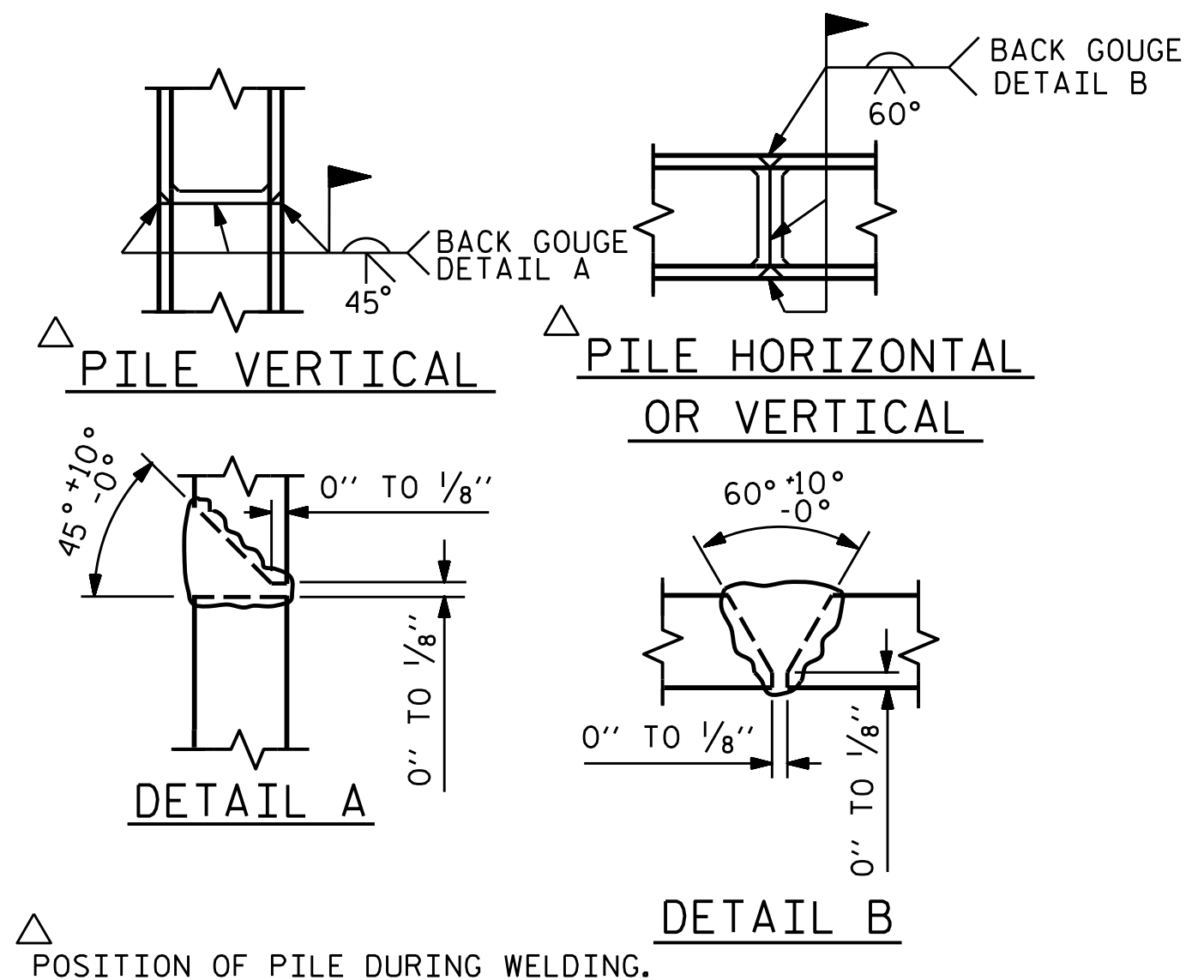


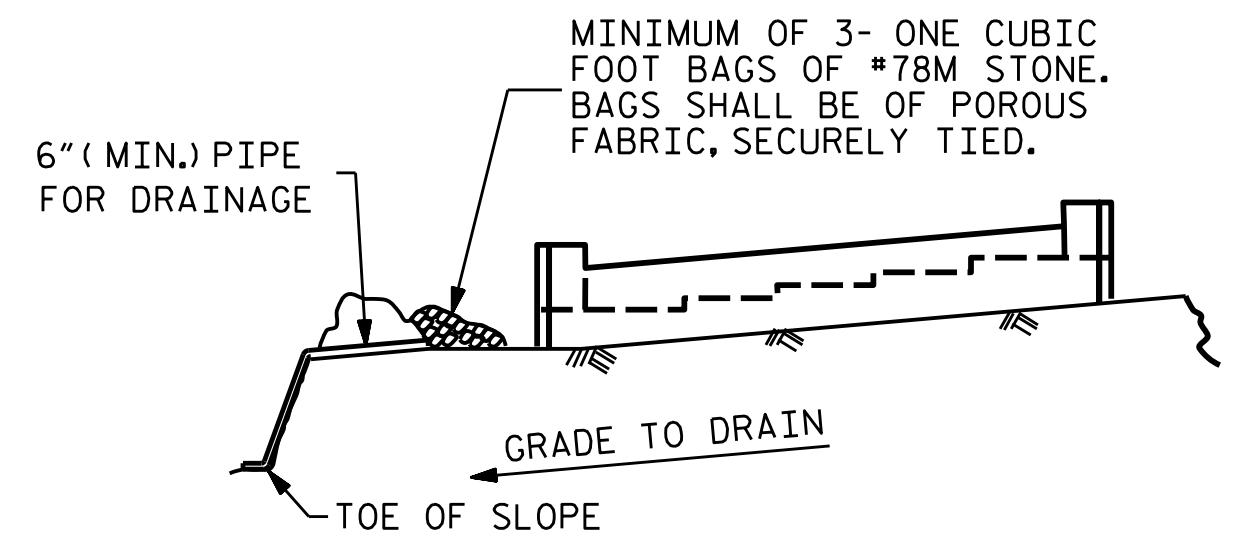
SECTION A-A



SECTION B-B



PILE SPLICE DETAILS



MINIMUM OF 3- ONE CUBIC FOOT BAGS OF #78M STONE. BAGS SHALL BE OF POROUS FABRIC, SECURELY TIED.

6" (MIN.) PIPE FOR DRAINAGE

GRADE TO DRAIN

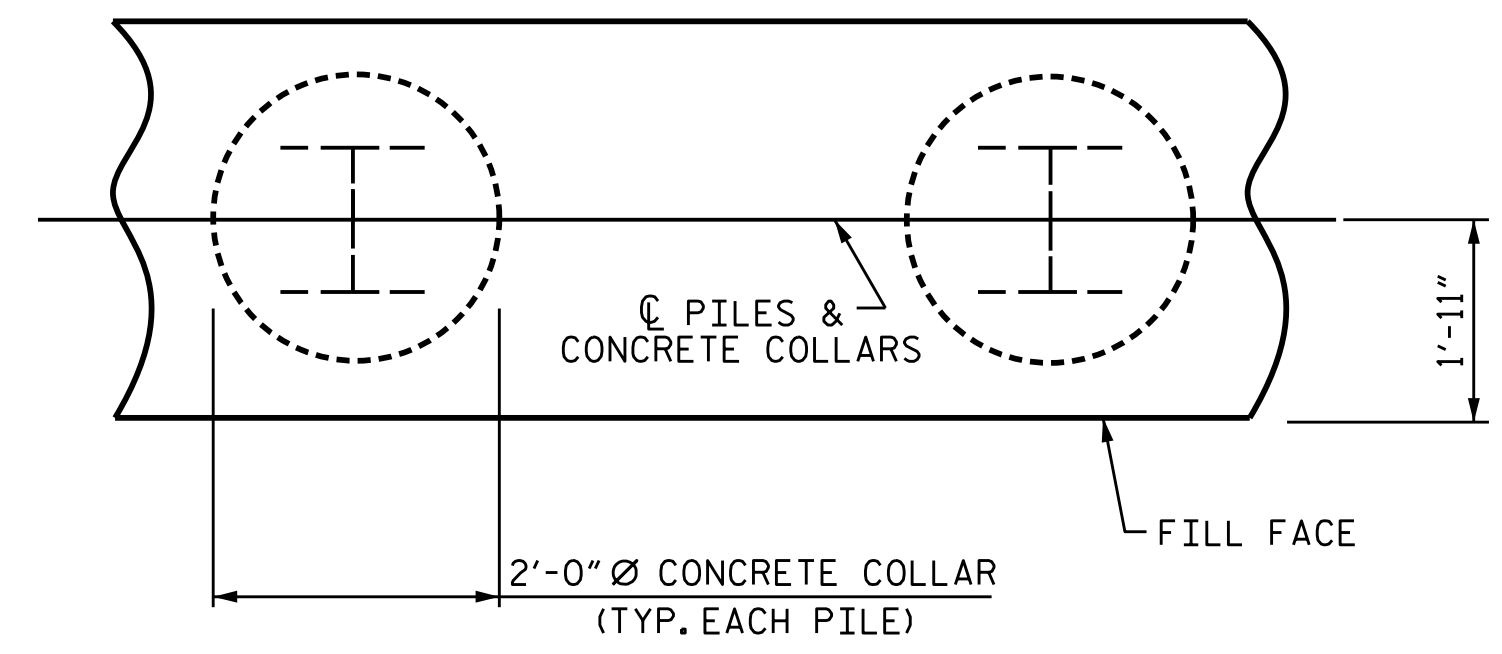
TOE OF SLOPE

BAGGED STONE AND PIPE SHALL BE PLACED IMMEDIATELY AFTER COMPLETION OF END BENT EXCAVATION. PIPE MAY BE EITHER CONCRETE, CORRUGATED STEEL, CORRUGATED ALUMINUM ALLOY, OR CORRUGATED PLASTIC. PERFORATED PIPE WILL NOT BE ALLOWED.

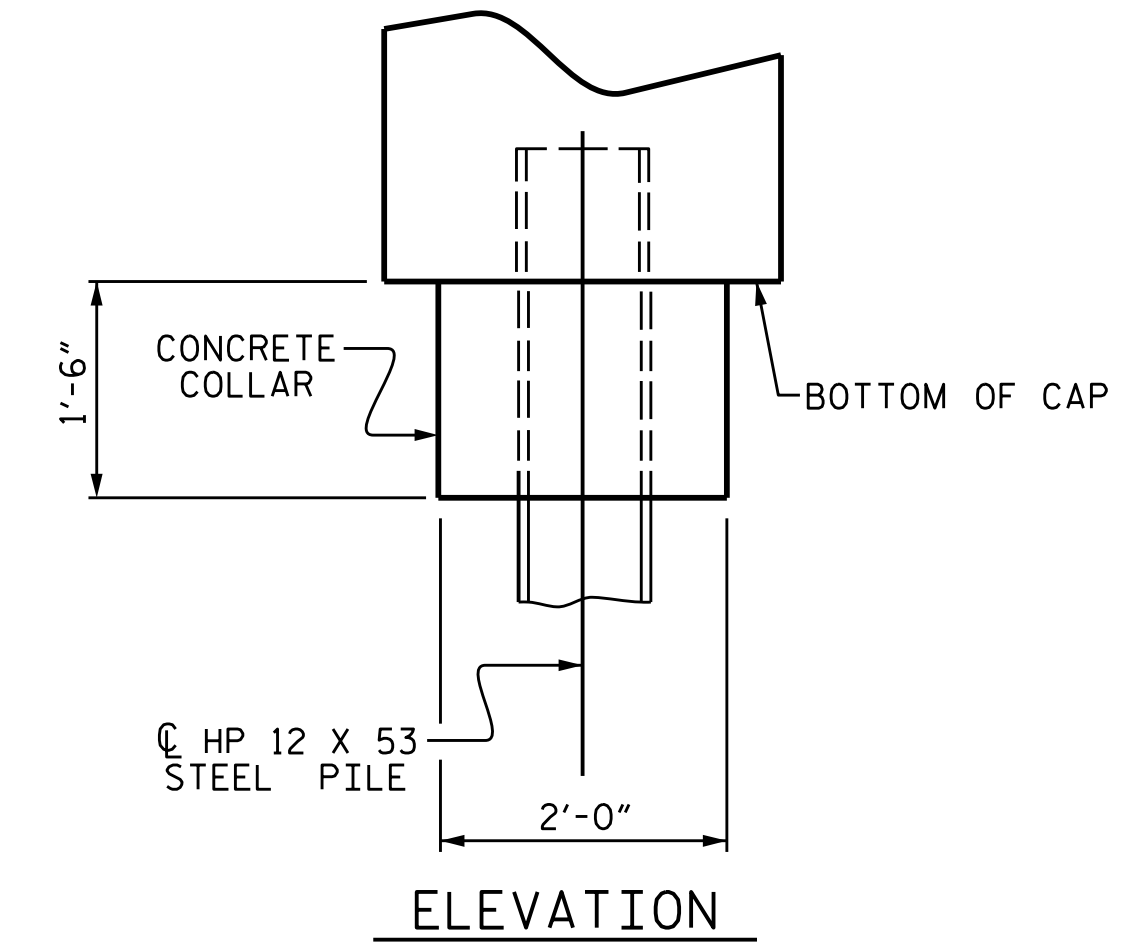
BAGGED STONE SHALL REMAIN IN PLACE UNTIL THE ENGINEER DIRECTS THAT IT BE REMOVED. THE CONTRACTOR SHALL REMOVE AND DISPOSE OF SILT ACCUMULATIONS AT BAGGED STONE WHEN SO DIRECTED BY THE ENGINEER. BAGS SHALL BE REMOVED AND REPLACED WHENEVER THE ENGINEER DETERMINES THAT THEY HAVE DETERIORATED AND LOST THEIR EFFECTIVENESS.

NO SEPARATE PAYMENT WILL BE MADE FOR THIS WORK AND THE ENTIRE COST OF THIS WORK SHALL BE INCLUDED IN THE UNIT CONTRACT PRICE BID FOR THE SEVERAL PAY ITEMS.

TEMPORARY DRAINAGE AT END BENT

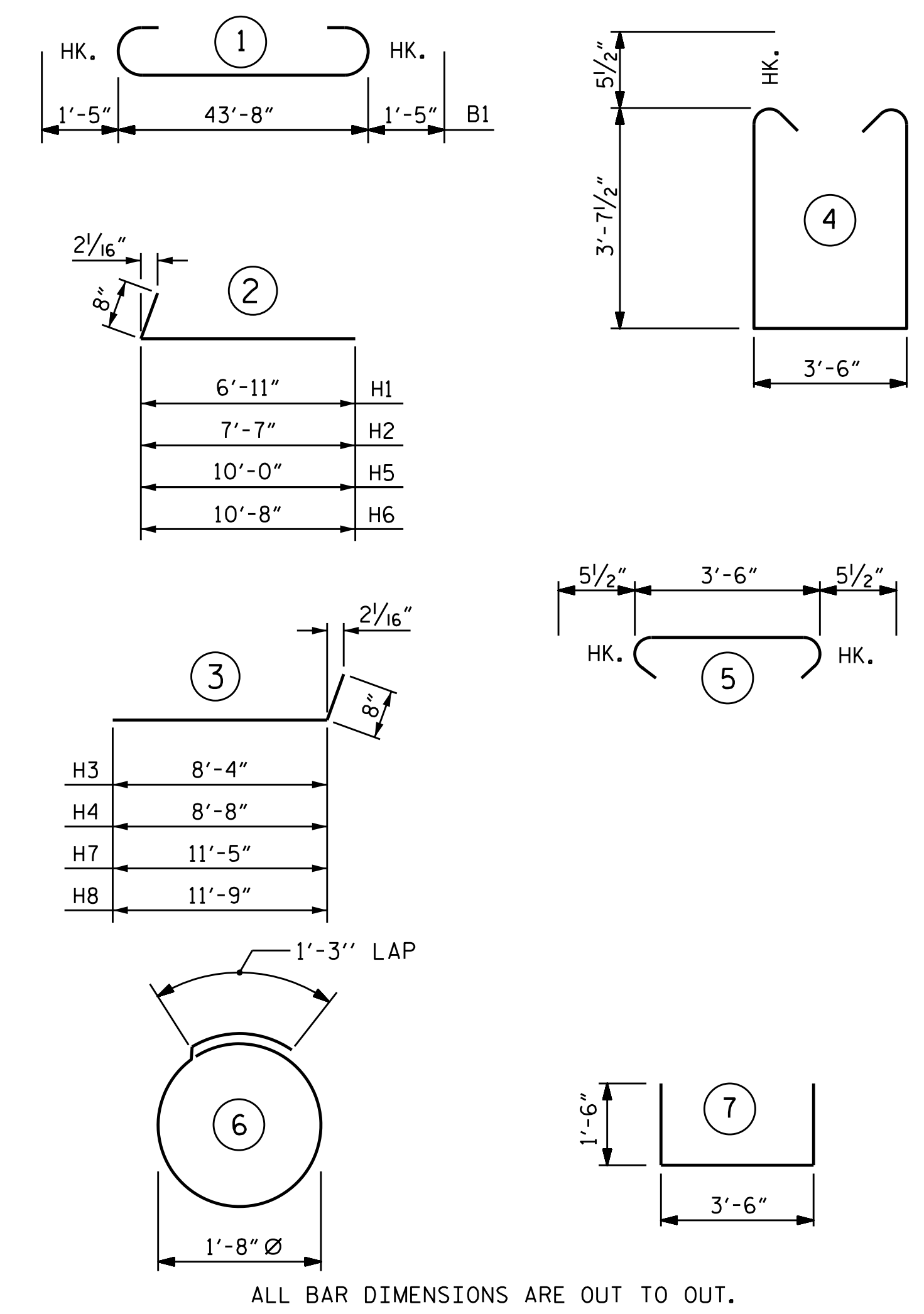


PLAN
CORROSION PROTECTION FOR STEEL PILES DETAIL



ELEVATION

BAR TYPES



ALL BAR DIMENSIONS ARE OUT TO OUT.

BILL OF MATERIAL

BAR	No.	SIZE	TYPE	LENGTH	WEIGHT
B1	8	#10		46'-6"	1601
B2	20	#4	STR.	23'-1"	308
B3	11	#4	STR.	3'-6"	26
B4	8	#4	STR.	13'-8"	73
H1	8	#5		7'-7"	63
H2	8	#5		8'-3"	69
H3	8	#5		9'-0"	75
H4	8	#5		3 9'-4"	78
H5	5	#5		2 10'-8"	56
H6	5	#5		2 11'-4"	59
H7	6	#5		3 12'-1"	76
H8	6	#5		3 12'-5"	78
K1	32	#4	STR.	3'-5"	73
S1	42	#5		4 11'-8"	511
S2	42	#5		5 4'-5"	193
S3	24	#5		6 6'-6"	163
U1	20	#4		7 6'-6"	87
V1	56	#5	STR.	6'-0"	350
V2	24	#5	STR.	9'-5"	236
V3	28	#5	STR.	9'-9"	285

REINFORCING STEEL 4460 LBS.

CLASS "A" CONCRETE BREAKDOWN :

POUR 1 (CAP, COLLAR, & LOWER PART OF WINGWALL) 29.6 C.Y.

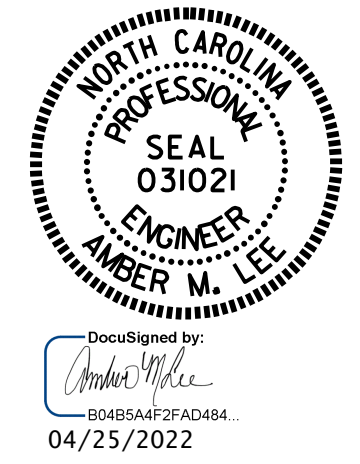
POUR 2 (UPPER PART OF WINGWALL) 4.7 C.Y.

TOTAL CLASS "A" CONCRETE: 34.3 C.Y.

HP 12 X 53 STEEL PILE
No 6 450 LF

PROJECT NO. BR-0051
YADKIN COUNTY
STATION: 18+34.78 -L-

SHEET 3 OF 3



STATE OF NORTH CAROLINA
DEPARTMENT OF TRANSPORTATION
RALEIGH
SUBSTRUCTURE
INTEGRAL
END BENT 1

DRAWN BY: C. RUIZ DATE: 09/2020
CHECKED BY: H.A. LOCKLEAR DATE: 03/2022
DESIGN ENGINEER OF RECORD: E. BAYSSIA DATE: 09/2020

DOCUMENT NOT CONSIDERED FINAL UNLESS ALL SIGNATURES COMPLETED

REVISIONS						SHEET NO.
NO.	BY:	DATE:	NO.	BY:	DATE:	S-24
1			3			TOTAL SHEETS
2			4			32