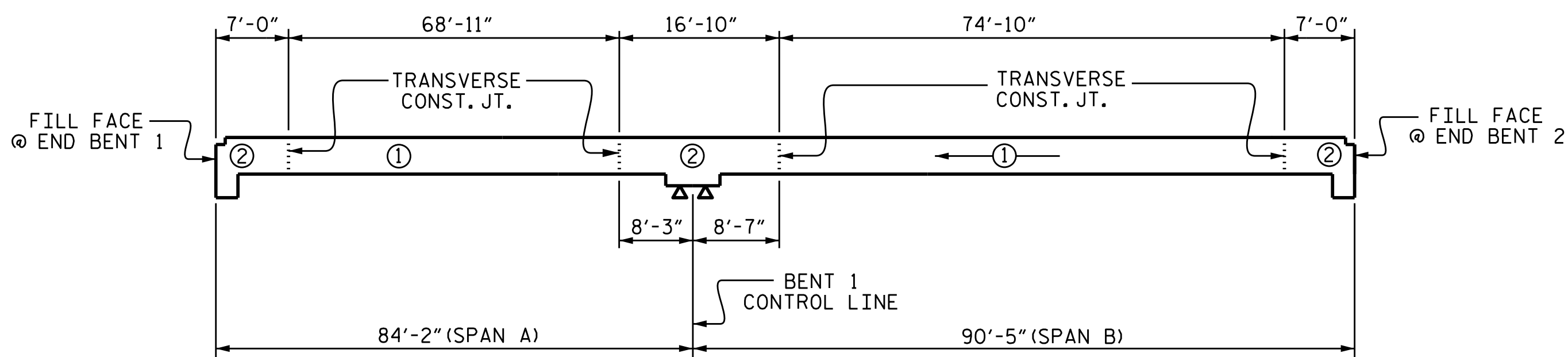


LAYOUT FOR COMPUTING AREA
REINFORCED CONCRETE DECK SLAB
(SQ. FT. = 6,324)



POUR SEQUENCE

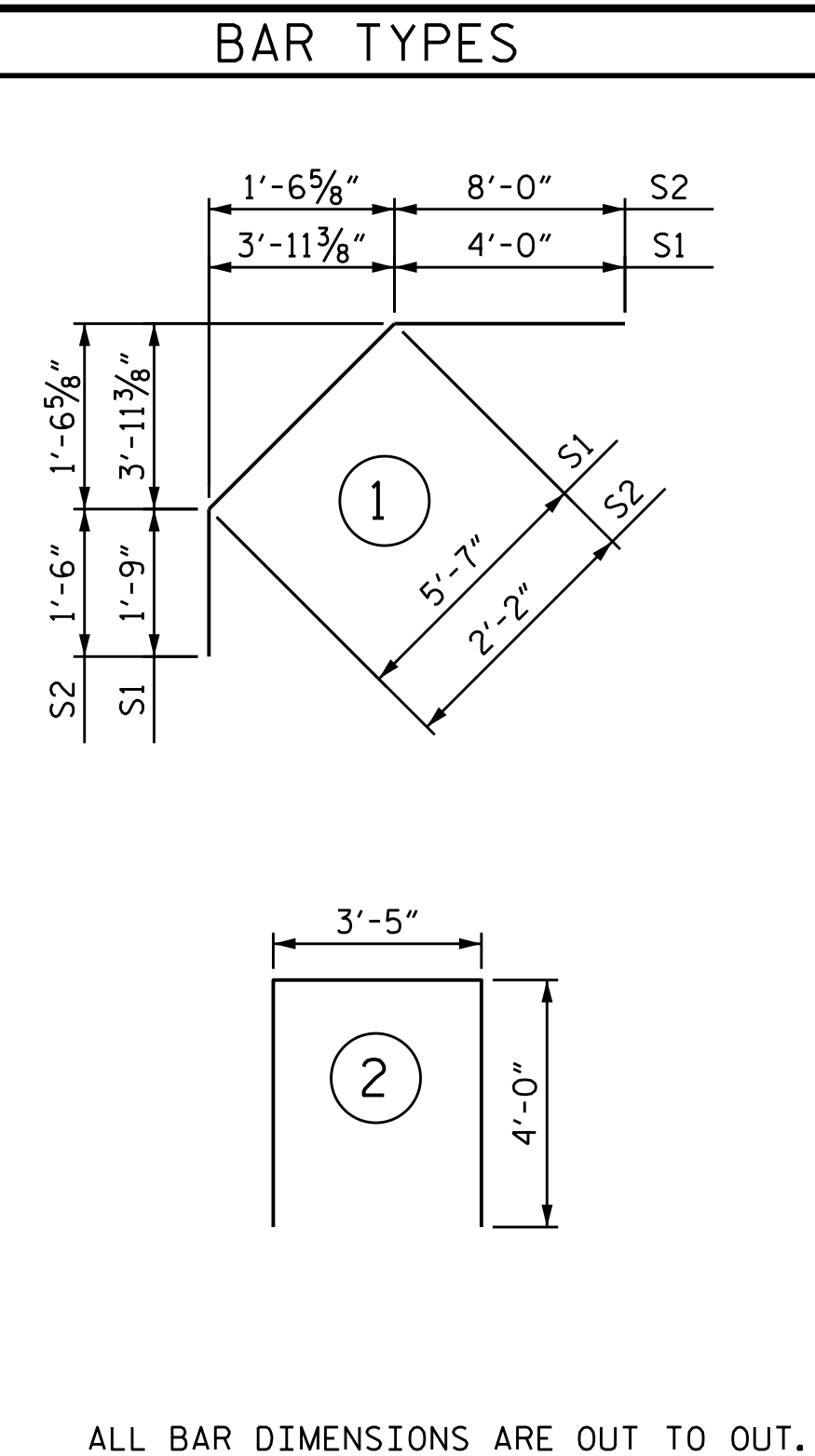
POUR ② CAN NOT BE STARTED UNTIL BOTH ADJACENT ① POURS REACH A MINIMUM OF 3,000 PSI.

—SUPERSTRUCTURE BILL OF MATERIAL—			
	CLASS AA CONCRETE (CU. YDS.)	REINFORCING STEEL (LBS.)	EPOXY COATED REINFORCING STEEL (LBS.)
POUR #1	171.5	21,268	22,913
POUR #2	80.6		
TOTALS**	252.1	21,268	22,913

**QUANTITIES FOR PARAPET AND END POSTS ARE NOT INCLUDED

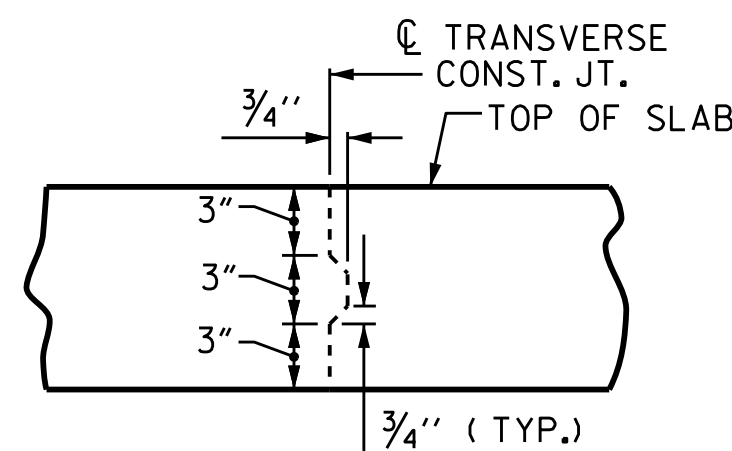
BILL OF MATERIAL					
BAR	NO.	SIZE	TYPE	LENGTH	WEIGHT
* A1	330	#5	STR	36'-3"	12477
* A101	2	#5	STR	34'-6"	72
* A102	2	#5	STR	32'-7"	68
* A103	2	#5	STR	30'-9"	64
* A104	2	#5	STR	28'-10"	60
* A105	2	#5	STR	27'-0"	56
* A106	2	#5	STR	25'-1"	52
* A107	2	#5	STR	23'-3"	48
* A108	2	#5	STR	21'-4"	45
* A109	2	#5	STR	19'-6"	41
* A110	2	#5	STR	17'-7"	37
* A111	2	#5	STR	15'-9"	33
* A112	2	#5	STR	13'-10"	29
* A113	2	#5	STR	12'-0"	25
* A114	2	#5	STR	8'-3"	21
* A115	2	#5	STR	4'-6"	17
* A116	2	#5	STR	6'-4"	13
* A117	2	#5	STR	4'-6"	9
* A118	2	#5	STR	2'-7"	5
A2	330	#5	STR	36'-3"	12477
A201	2	#5	STR	34'-6"	72
A202	2	#5	STR	32'-7"	68
A203	2	#5	STR	30'-9"	64
A204	2	#5	STR	28'-10"	60
A205	2	#5	STR	27'-0"	56
A206	2	#5	STR	25'-1"	52
A207	2	#5	STR	23'-3"	48
A208	2	#5	STR	21'-4"	45
A209	2	#5	STR	19'-6"	41
A210	2	#5	STR	17'-7"	37
A211	2	#5	STR	15'-9"	33
A212	2	#5	STR	13'-10"	29
A213	2	#5	STR	12'-0"	25
A214	2	#5	STR	8'-3"	21
A215	2	#5	STR	4'-6"	17
A216	2	#5	STR	6'-4"	13
A217	2	#5	STR	4'-6"	9
A218	2	#5	STR	2'-7"	5

BILL OF MATERIAL					
BAR	NO.	SIZE	TYPE	LENGTH	WEIGHT
* B1	146	#6	STR	18'-1"	3966
* B2	25	#4	STR	38'-10"	649
* B3	50	#5	STR	32'-5"	1691
* B4	48	#5	STR	36'-3"	1815
* B5	50	#4	STR	22'-9"	760
B6	36	#5	STR	59'-10"	2247
B7	36	#4	STR	53'-9"	1293
B8	39	#4	STR	44'-11"	1170
B9	72	#5	STR	33'-4"	2503
K1	10	#4	STR	37'-6"	251
K2	4	#4	STR	2'-0"	5
K3	4	#4	STR	2'-7"	7
K4	8	#4	STR	2'-10"	15
K5	4	#4	STR	2'-3"	6
K6	6	#4	STR	7'-8"	31
K7	6	#4	STR	8'-9"	35
K8	12	#4	STR	9'-2"	73
K9	6	#4	STR	8'-2"	33
* S1	56	#4	1	11'-4"	424
* S2	56	#4	1	11'-8"	436
U1	56	#4	2	11'-5"	427
REINFORCING STEEL				LBS.	21,268
* EPOXY COATED REINFORCING STEEL				LBS.	22,913



ALL BAR DIMENSIONS ARE OUT TO OUT.

BAR SIZE	SUPERSTRUCTURE REINFORCING STEEL LENGTHS ARE BASED ON THE FOLLOWING MINIMUM SPLICE LENGTHS				
	SUPERSTRUCTURE EXCEPT APPROACH SLABS, PARAPETS, AND BARRIER RAILS		APPROACH SLABS		PARAPETS AND BARRIER RAILS
	EPOXY COATED	UNCOATED	EPOXY COATED	UNCOATED	
#4	1'-11"	1'-7"	1'-11"	1'-7"	2'-6"
#5	2'-5"	2'-0"	2'-5"	2'-0"	3'-1"
#6	2'-10"	2'-5"	3'-7"	2'-5"	3'-8"
#7	4'-2"	2'-9"			
#8	4'-9"	3'-2"			

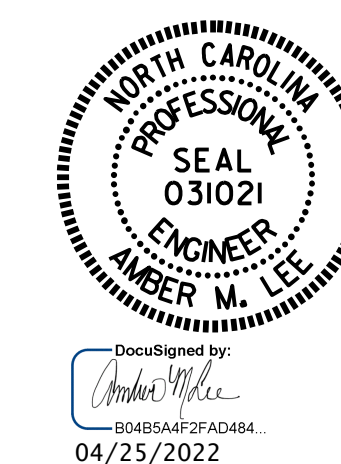


TRANSVERSE CONSTRUCTION JOINT DETAIL

NOTE: REINFORCING STEEL IN SLAB NOT SHOWN. LONGITUDINAL REINFORCING STEEL SHALL BE CONTINUOUS THRU JOINT

GROOVING BRIDGE FLOORS	
APPROACH SLABS	900 SO.FT.
BRIDGE DECK	5,359 SO.FT.
TOTAL	6,259 SO.FT.

PROJECT NO. BR-0051
YADKIN COUNTY
STATION: 18+34.78 -L-



STATE OF NORTH CAROLINA
DEPARTMENT OF TRANSPORTATION
RALEIGH
SUPERSTRUCTURE
BILL OF MATERIAL

DRAWN BY: M. G. SHAIKH DATE: 02/2022
CHECKED BY: H.A. LOCKLEAR DATE: 03/2022
DESIGN ENGINEER OF RECORD: E. BAYISSA DATE: 08/2019

DOCUMENT NOT CONSIDERED FINAL UNLESS ALL SIGNATURES COMPLETED

REVISIONS						SHEET NO. S-21
NO.	BY:	DATE:	NO.	BY:	DATE:	
1			3			TOTAL SHEETS 32
2			4			