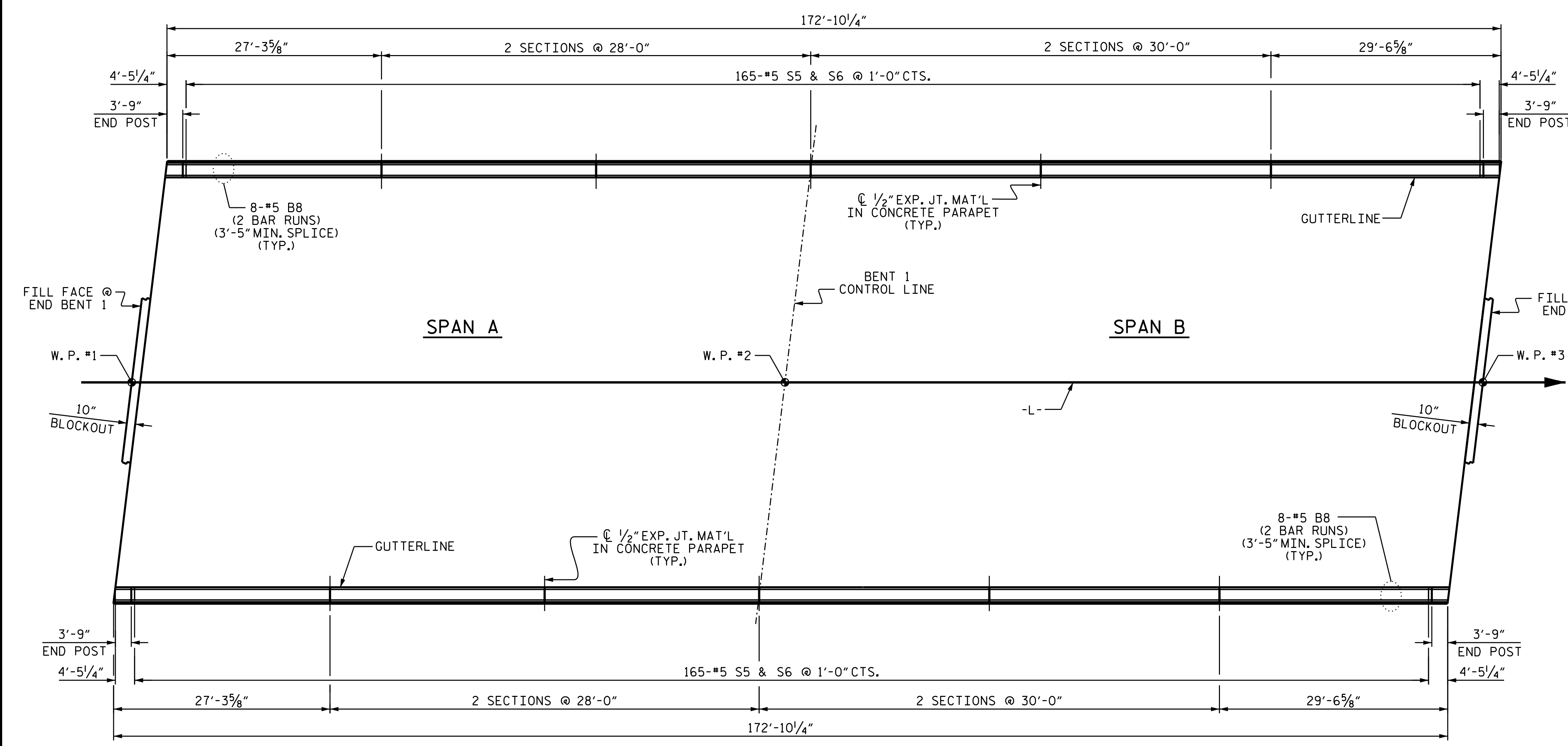


BAR TYPES		BILL OF MATERIAL				
		FOR CONCRETE PARAPET & END POSTS ONLY				
BAR	NO.	SIZE	TYPE	LENGTH	WEIGHT	
* B8	192	#5	STR	16'-5"	3288	
* E1	8	#7	STR	2'-7"	42	
* E2	8	#7	STR	3'-1"	50	
* E3	8	#7	STR	3'-7"	59	
* E4	8	#7	STR	4'-1"	67	
* E5	8	#7	STR	4'-6"	74	
* F1	8	#6	STR	1'-9"	21	
* F2	8	#6	STR	3'-0"	36	
* F3	4	#6	STR	3'-9"	23	
* F4	4	#6	STR	4'-1"	25	
* S5	330	#5	1	6'-10"	2352	
* S6	330	#5	2	5'-6"	1893	
* S7	32	#5	STR	2'-10"	95	
* EPOXY COATED REINFORCING STEEL				8,025 LBS.		
CLASS AA CONCRETE				38.5 CU. YDS.		
1'-2" X 2'-6" CONCRETE PARAPET				345.71 LIN. FT.		
* THESE BARS ARE EPOXY COATED						



PLAN OF PARAPET

NOTES

CONCRETE PARAPET IN A CONTINUOUS UNIT SHALL NOT BE CAST UNTIL ALL SLAB CONCRETE IN THE UNIT HAS BEEN CAST AND HAS REACHED A MINIMUM COMPRESSIVE STRENGTH OF 3,000 PSI.

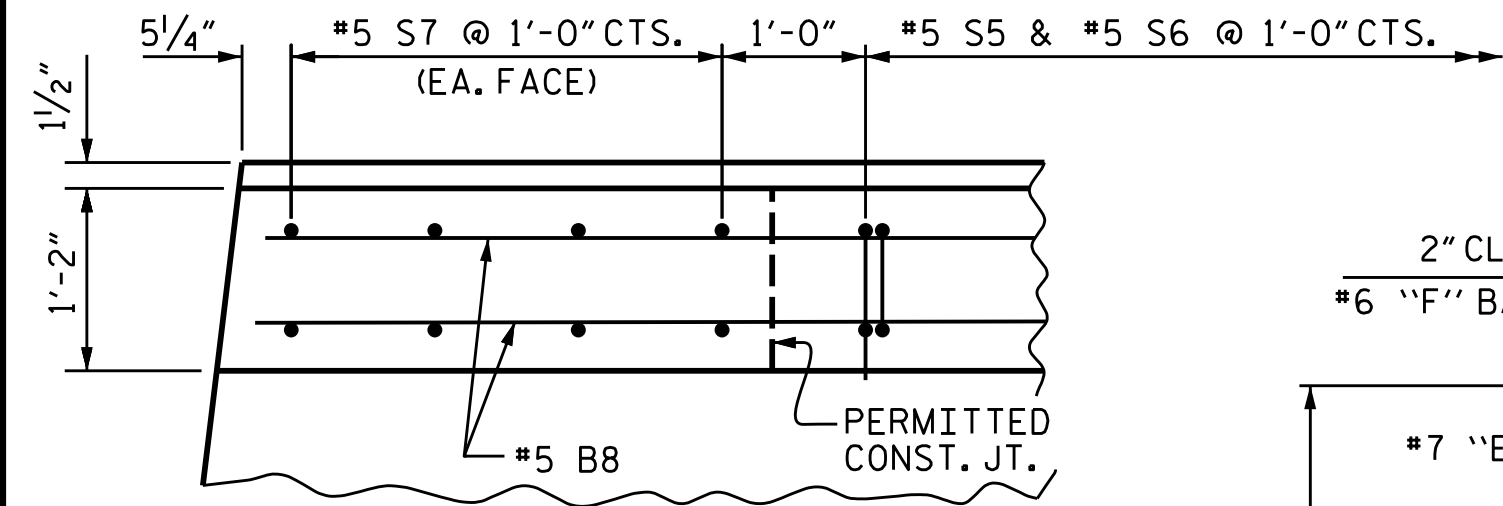
ALL REINFORCING STEEL IN PARAPET SHALL BE EPOXY COATED.

THE #5 S6 BARS MAY BE SHIFTED SLIGHTLY IN ORDER TO MAINTAIN A 2" MINIMUM CLEARANCE TO THE 1/2" EXPANSION JOINT MATERIAL IN PARAPET.

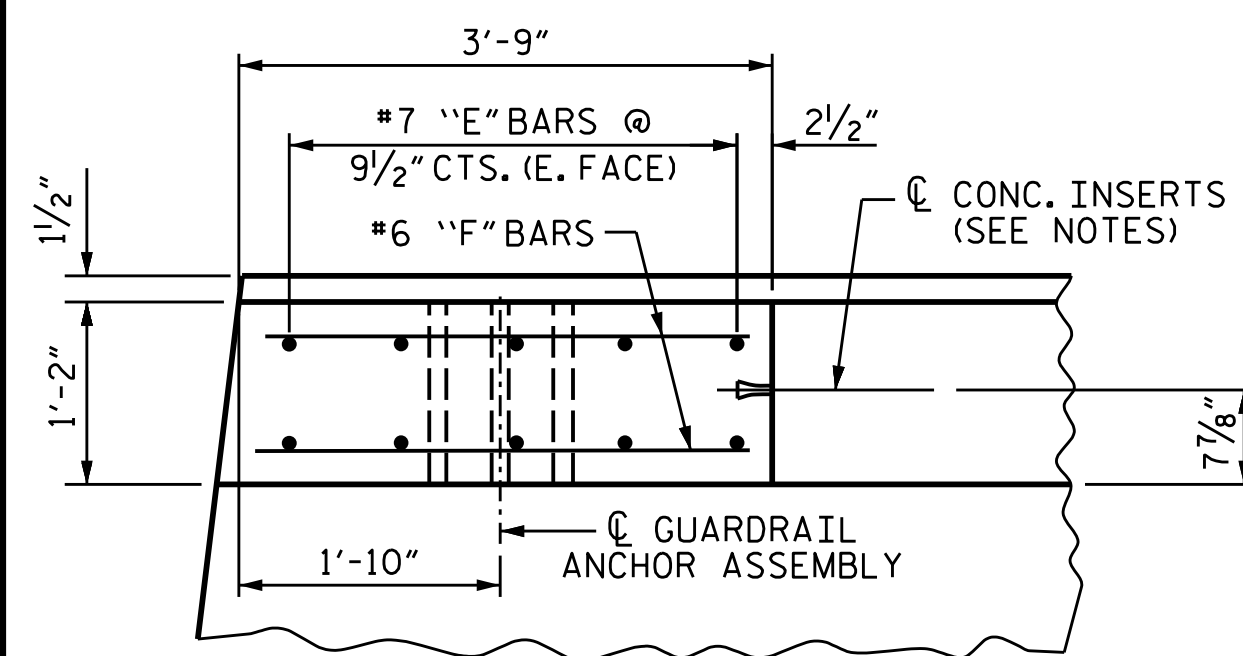
FOR DETAILS OF CONCRETE INSERTS IN END POSTS. SEE "RAIL POST SPACINGS AND END OF RAIL DETAILS" SHEET.

FOR DETAILS OF GUARDRAIL ANCHOR ASSEMBLIES, SEE "GUARDRAIL ANCHORAGE DETAILS FOR METAL RAILS" SHEET.

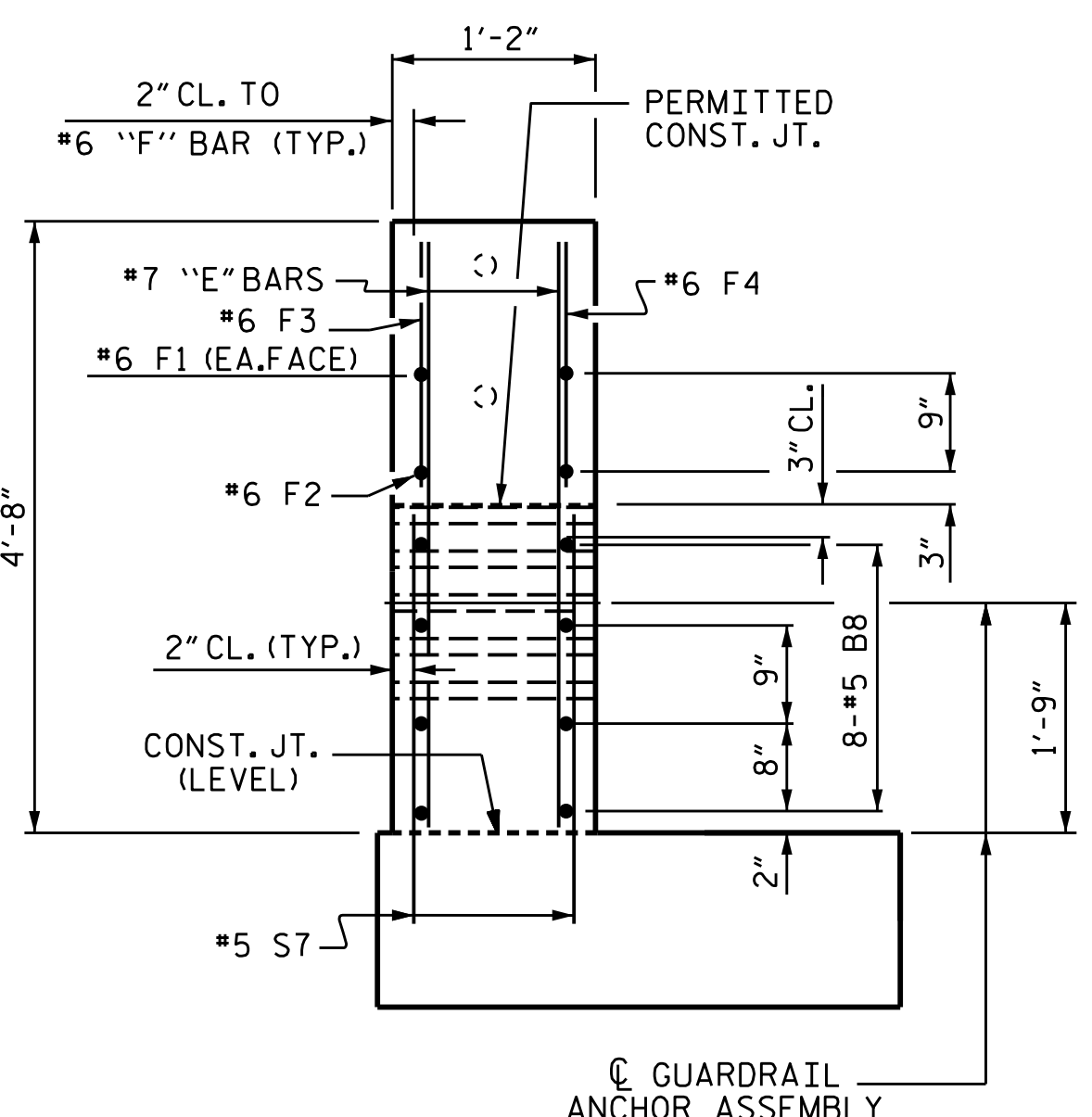
GROOVED CONTRACTION JOINTS, 1/2" IN DEPTH, SHALL BE TOOLED IN ALL EXPOSED FACES OF THE PARAPET IN ACCORDANCE WITH ARTICLE 825-10(B) OF THE STANDARD SPECIFICATIONS. THE CONTRACTION JOINT SHALL BE LOCATED AT EACH THIRD POINT BETWEEN PARAPET EXPANSION JOINTS. ONLY ONE CONTRACTION JOINT IS REQUIRED AT MIDPOINT OF PARAPET SEGMENTS LESS THAN 20 FEET IN LENGTH AND NO CONTRACTION JOINTS ARE REQUIRED FOR THOSE SEGMENTS LESS THAN 10 FEET IN LENGTH.



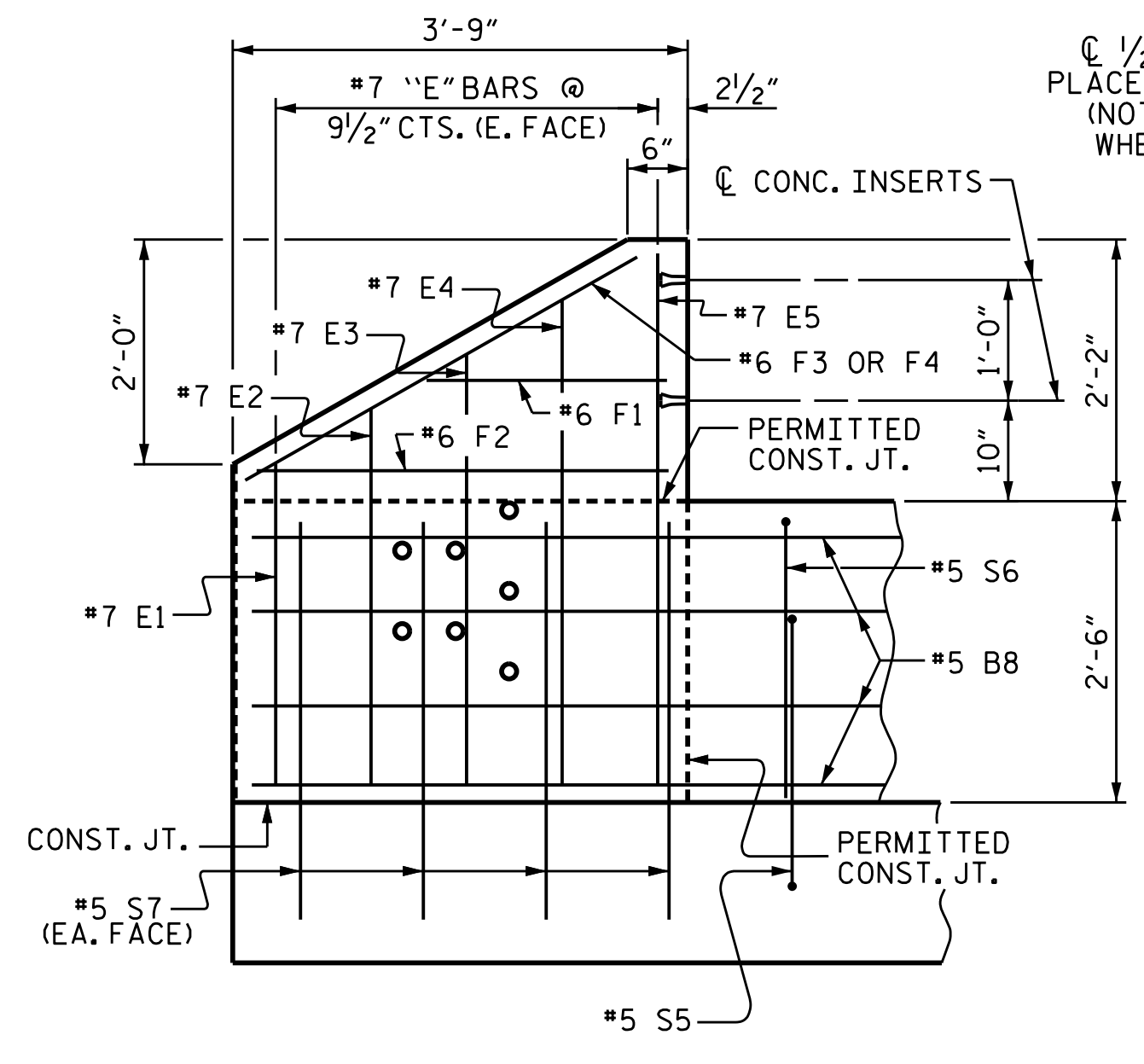
PLAN OF PARAPET



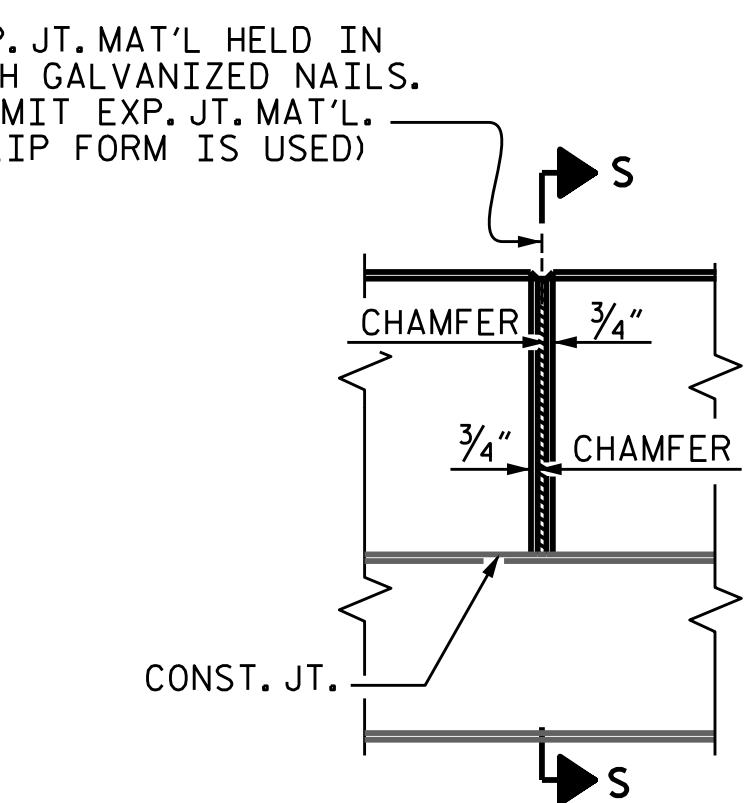
PLAN OF END POST



END VIEW



ELEVATION



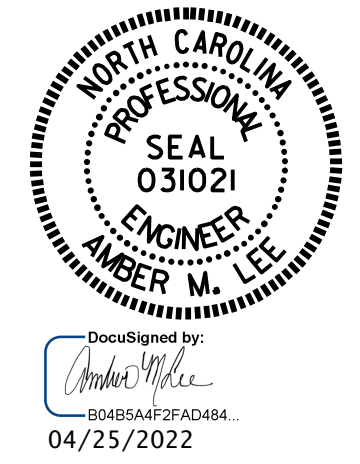
ELEVATION AT EXPANSION JOINTS

DRAWN BY : H.A. LOCKLEAR DATE : 03/2020
 CHECKED BY : REZA KOUCHEKI DATE : 03/2022

4/25/2022 R:\Structures\OBD.FINAL PLANS\400.033.BR-0051.SMU. 2MR.0016.980090.dgn
 omlee

PARAPET AND END POST FOR TWO BAR RAIL

DOCUMENT NOT CONSIDERED FINAL UNLESS ALL SIGNATURES COMPLETED



PROJECT NO. BR-0051
 YADKIN COUNTY
 STATION: 18+34.78 -L-

SHEET 1 OF 4

REVISIONS						SHEET NO.
NO.	BY:	DATE:	NO.	BY:	DATE:	S-16
1			3			TOTAL SHEETS
2			4			32

STATE OF NORTH CAROLINA
 DEPARTMENT OF TRANSPORTATION
 RALEIGH
 1'-2" X 2'-6" CONCRETE PARAPET DETAILS