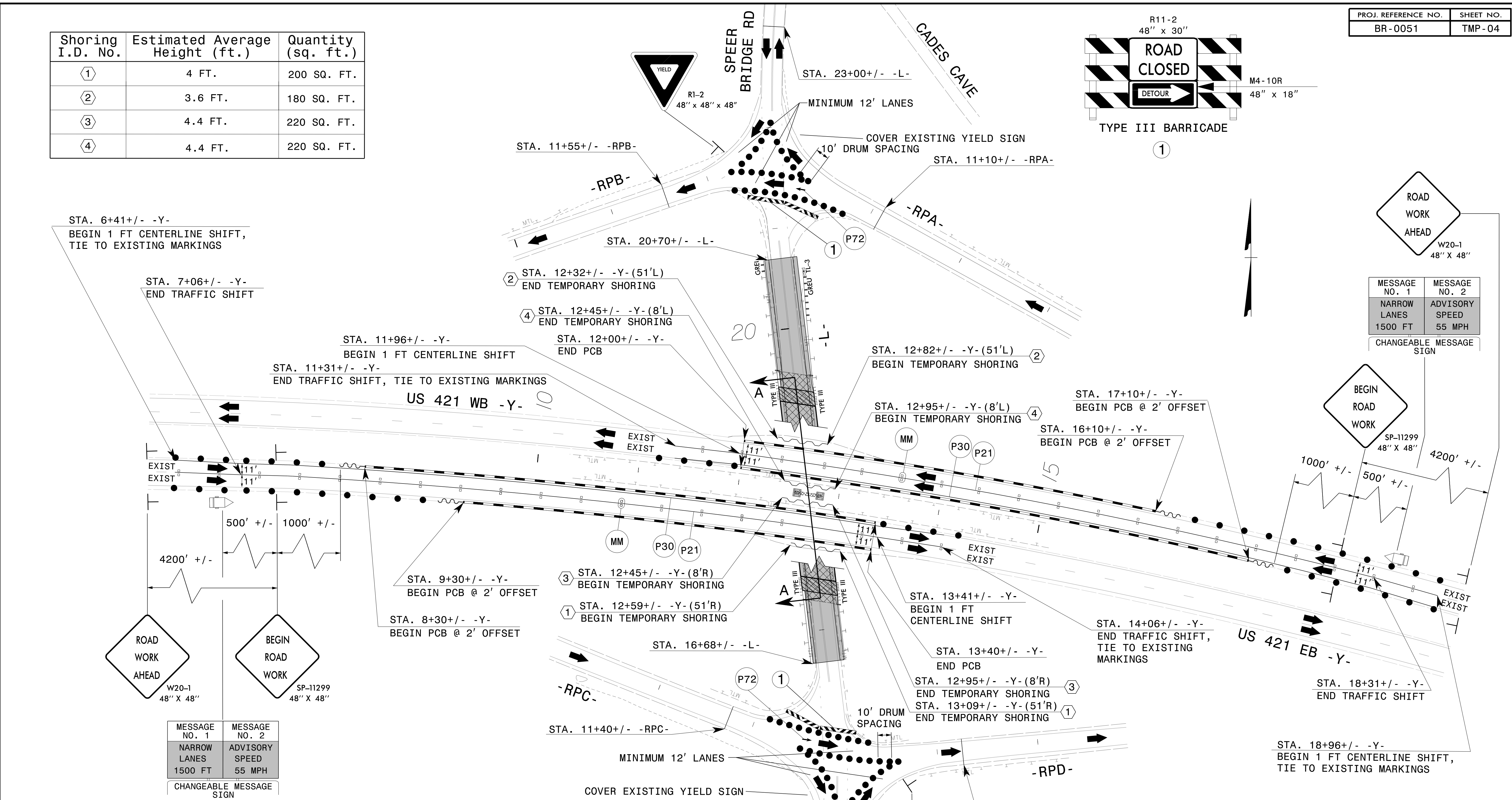
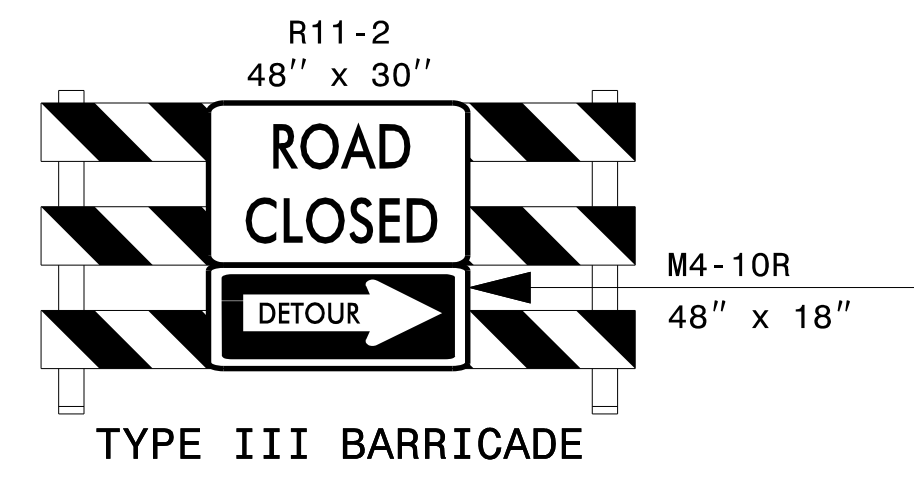
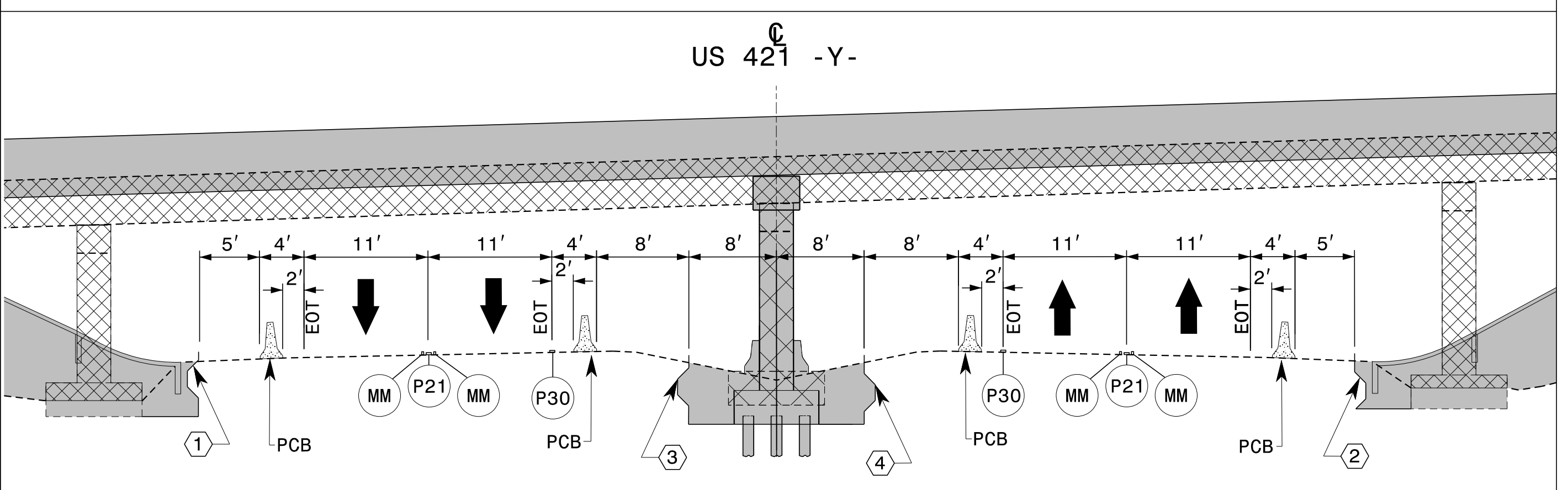


Shoring I.D. No.	Estimated Average Height (ft.)	Quantity (sq. ft.)
①	4 FT.	200 SQ. FT.
②	3.6 FT.	180 SQ. FT.
③	4.4 FT.	220 SQ. FT.
④	4.4 FT.	220 SQ. FT.



MESSAGE NO. 1	MESSAGE NO. 2
NARROW LANES 1500 FT	ADVISORY SPEED 55 MPH
CHANGEABLE MESSAGE SIGN	

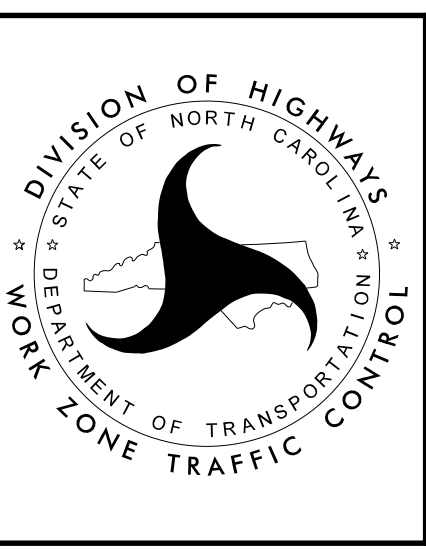
SECTION A-A



APPROVED: *Don A. Parkes*
 DATE: 05/11/2022

SEAL 043251
 ENGINEER DON A. PARKER

DOCUMENT NOT CONSIDERED FINAL UNLESS ALL SIGNATURES COMPLETED



PHASE I DETAILS

STATE OF NORTH CAROLINA
 DEPARTMENT OF TRANSPORTATION
 WORK ZONE TRAFFIC CONTROL

5/11/2022
 N:\Special\BR0051\TrafficControl\TCP\BR-0051.TC_TMP_04.dgn
 User: mackillu