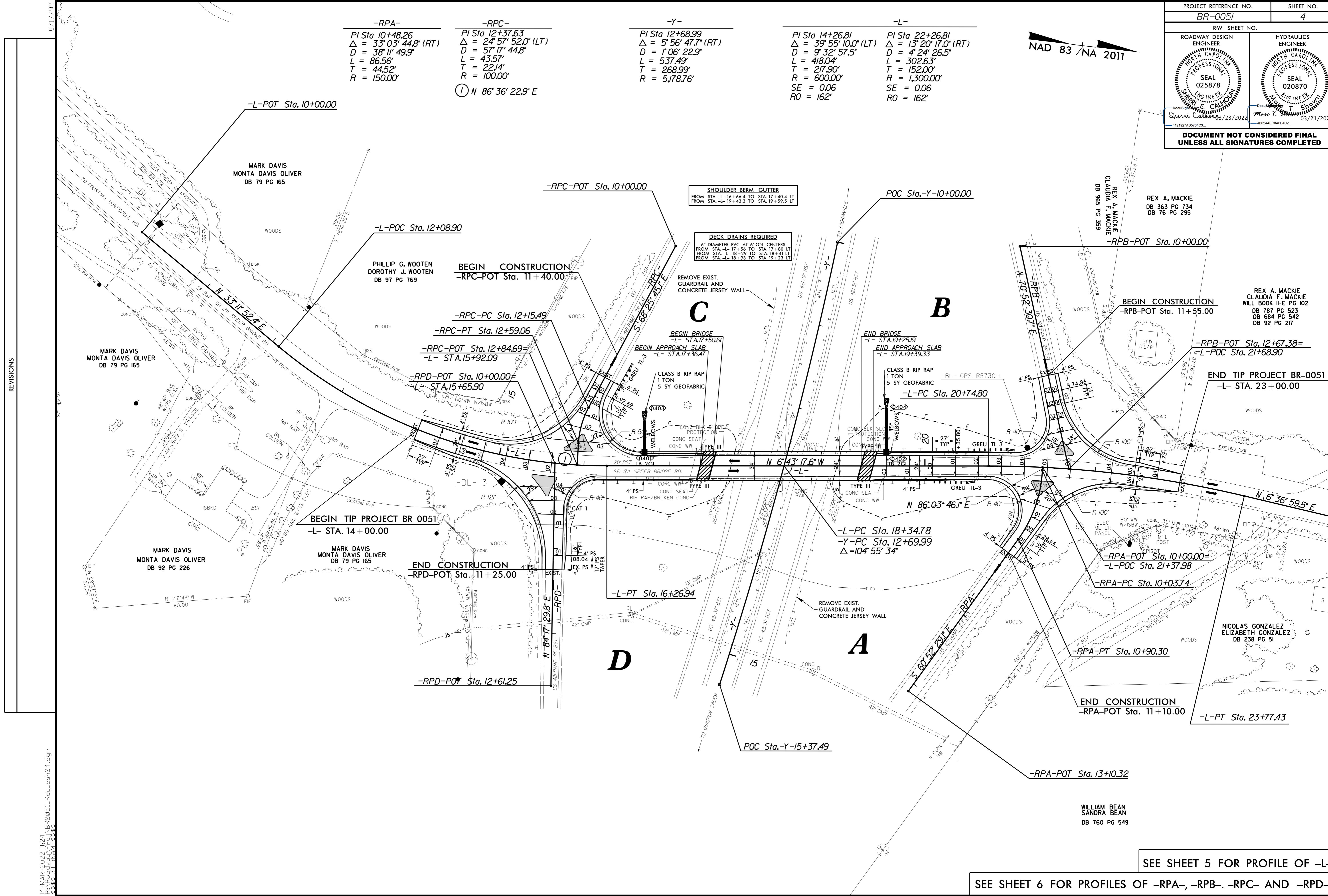


NAD 83 / NA 2011

-RPA-	-RPC-	-Y-	-L-
PI Sta 10+48.26	PI Sta 12+37.63	PI Sta 12+68.99	PI Sta 14+26.81
$\Delta = 33^{\circ} 03' 44.8" (RT)$	$\Delta = 24^{\circ} 57' 52.0" (LT)$	$\Delta = 5^{\circ} 56' 47.7" (RT)$	$\Delta = 39^{\circ} 55' 10.0" (LT)$
$D = 38^{\circ} 11' 49.9"$	$D = 57^{\circ} 17' 44.8"$	$D = 1^{\circ} 06' 22.9"$	$D = 9^{\circ} 32' 57.5"$
$L = 86.56'$	$L = 43.57'$	$L = 537.49'$	$L = 418.04'$
$T = 44.52'$	$T = 22.14'$	$T = 268.99'$	$T = 217.90'$
$R = 150.00'$	$R = 100.00'$	$R = 5178.76'$	$R = 600.00'$
	$\odot N 86^{\circ} 36' 22.9" E$		$SE = 0.06$
			$RO = 162'$
			$SE = 0.06$
			$RO = 162'$



REVISIONS

8/17/99
14-MAR-2022 11:24 BR0051_P04.pst 04.dgn
S:\PROJECTS\BR0051\BR0051_P04.dgn

SEE SHEET 5 FOR PROFILE OF -L-
SEE SHEET 6 FOR PROFILES OF -RPA-, -RPB-, -RPC- AND -RPD-

WILLIAM BEAN
SANDRA BEAN
DB 760 PG 549