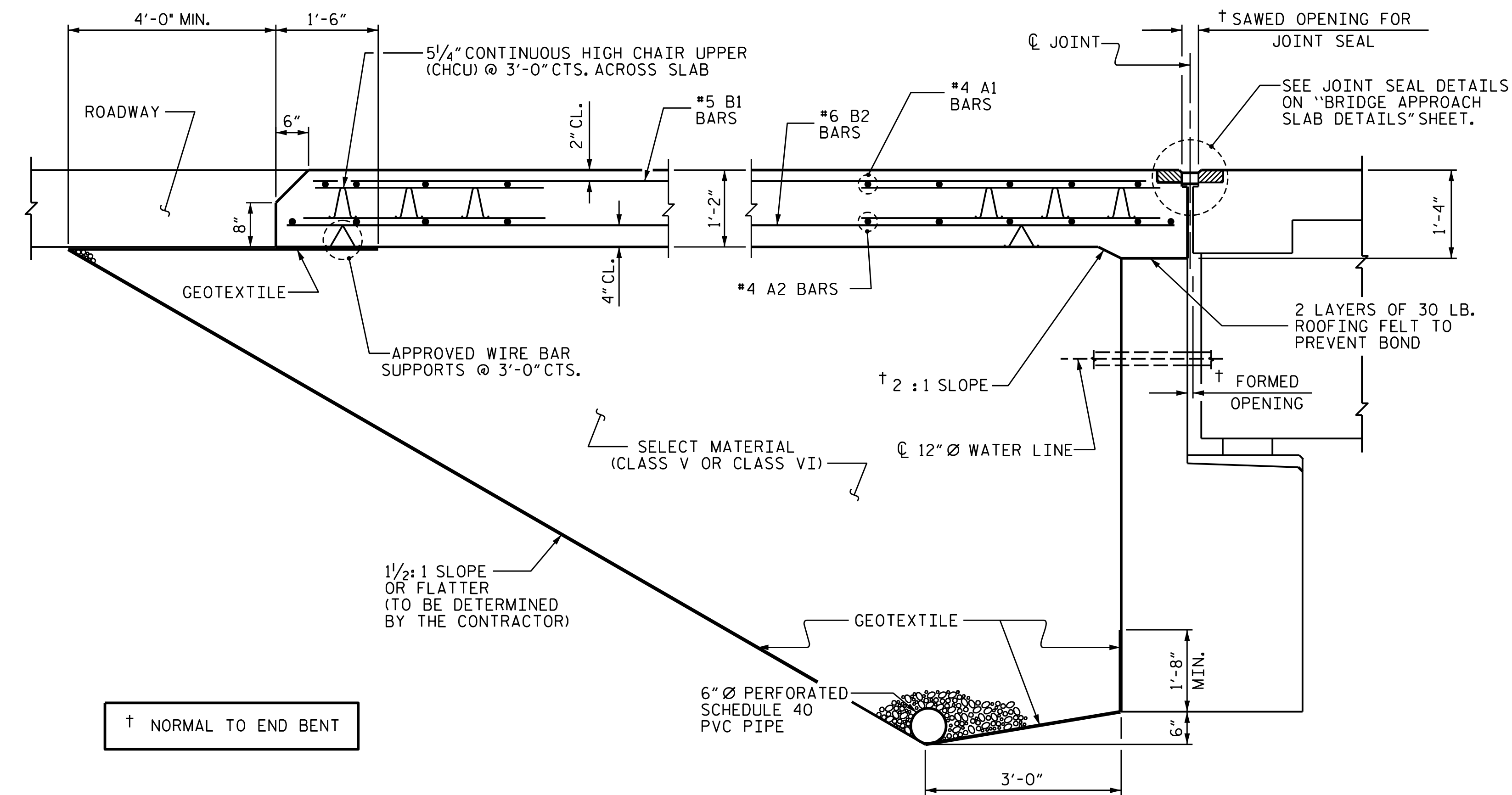


PLAN @ END BENT 1

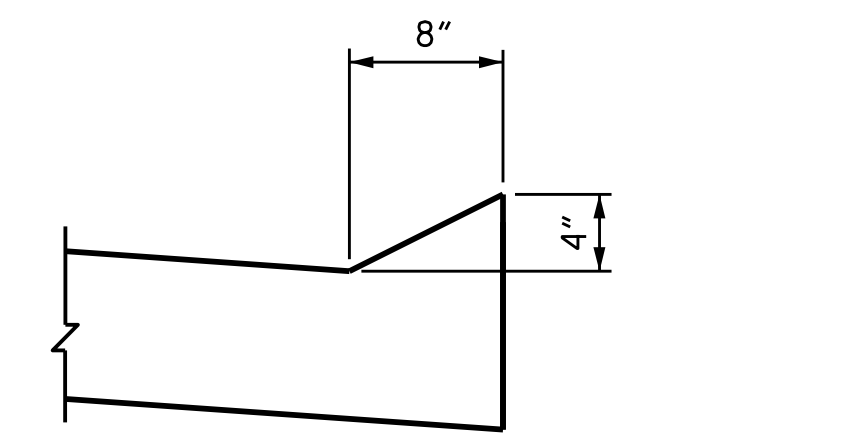
PLAN @ END BENT 2

DIMENSIONS SHOWN ARE TYPICAL FOR BOTH APPROACH SLABS

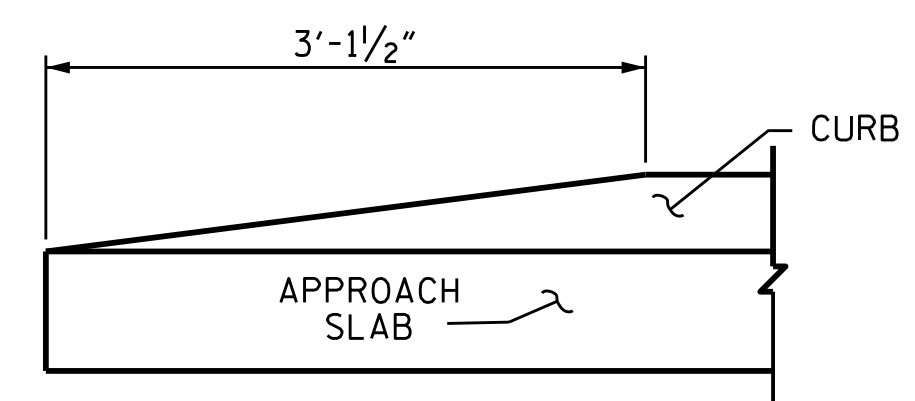


SECTION THRU SLAB

(TYPE I - STANDARD APPROACH FILL)



SECTION N-N



END OF CURB WITHOUT SHOULDER BERM GUTTER

CURB DETAILS

NOTES

- FOR BRIDGE APPROACH FILL INCLUDING GEOTEXTILE, 6" Ø DRAINAGE PIPE, AND SELECT MATERIAL BACKFILL, SEE ROADWAY PLANS.
- GEOTEXTILE SHALL BE TYPE 1 IN ACCORDANCE WITH THE STANDARD SPECIFICATIONS SECTION 1056.
- SELECT MATERIAL BACKFILL (CLASS V OR CLASS VI) SHALL BE IN ACCORDANCE WITH STANDARD SPECIFICATIONS SECTION 1016.
- APPROACH SLAB SHALL NOT BE CONSTRUCTED PRIOR TO COMPLETION OF THE BRIDGE DECK.
- THE JOINT SHALL BE SAWS PRIOR TO THE CASTING OF THE BARRIER RAIL.
- FOR THE 6" Ø DRAINAGE PIPE OUTLET(S), SEE ROADWAY STANDARD DRAWINGS.
- AREA BETWEEN THE WINGWALL AND APPROACH SLAB SHALL BE GRADED TO DRAIN THE WATER AWAY FROM THE FILL FACE OF THE BRIDGE AND SHALL BE PAVED. SEE ROADWAY PLANS.
- WITH FOAM JOINT SEAL
- FOR FOAM JOINT SEALS, SEE SPECIAL PROVISIONS.
- THE NOMINAL UNCOMPRESSED SEAL WIDTH OF THE FOAM JOINT SEAL SHALL BE 2".
- FOR ELASTOMERIC CONCRETE, SEE SPECIAL PROVISIONS.

BILL OF MATERIAL					
APPROACH SLAB AT BENT 1					
BAR	NO.	SIZE	TYPE	LENGTH	WEIGHT
*A1	25	#4	STR	33'-0"	551
A2	26	#4	STR	33'-0"	573
*B1	67	#5	STR	23'-9"	1660
B2	67	#6	STR	24'-8"	2482
REINFORCING STEEL				LBS.	3055
*EPOXY COATED REINFORCING STEEL				LBS.	2211
CLASS AA CONCRETE				C. Y.	36.2

APPROACH SLAB AT BENT 2					
BAR	NO.	SIZE	TYPE	LENGTH	WEIGHT
*A1	25	#4	STR	33'-0"	551
A2	26	#4	STR	33'-0"	573
*B1	67	#5	STR	23'-9"	1660
B2	67	#6	STR	24'-8"	2482
REINFORCING STEEL				LBS.	3055
*EPOXY COATED REINFORCING STEEL				LBS.	2211
CLASS AA CONCRETE				C. Y.	36.2

SPLICE LENGTHS		
BAR SIZE	EPOXY COATED	UNCOATED
#4	1'-11"	1'-7"
#5	2'-5"	2'-0"
#6	3'-7"	2'-5"

DRAWN BY : M. G. SHAIKH DATE : 02/2021  
 CHECKED BY : A. SORSENGINH DATE : 05/2021  
 DESIGN ENGINEER OF RECORD: A. SORSENGINH DATE : 05/2021

DOCUMENT NOT CONSIDERED FINAL UNLESS ALL SIGNATURES COMPLETED

PROJECT NO. B-5772  
 ROWAN COUNTY  
 STATION: 20+91.04 -EL-  
 SHEET 1 OF 2

STATE OF NORTH CAROLINA  
 DEPARTMENT OF TRANSPORTATION  
 RALEIGH  
 STANDARD  
 BRIDGE APPROACH SLAB  
 FOR FLEXIBLE PAVEMENT

03/25/2022  
 NORTH CAROLINA PROFESSIONAL SEAL  
 031583  
 ENGINEER  
 KRISHNA PRASAD SEDAI  
 Krishna P. Sedai  
 EMBF7941508F487...

REVISIONS						SHEET NO.
NO.	BY:	DATE:	NO.	BY:	DATE:	S-24
1			3			TOTAL SHEETS
2			4			25