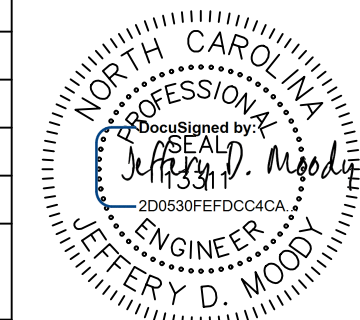

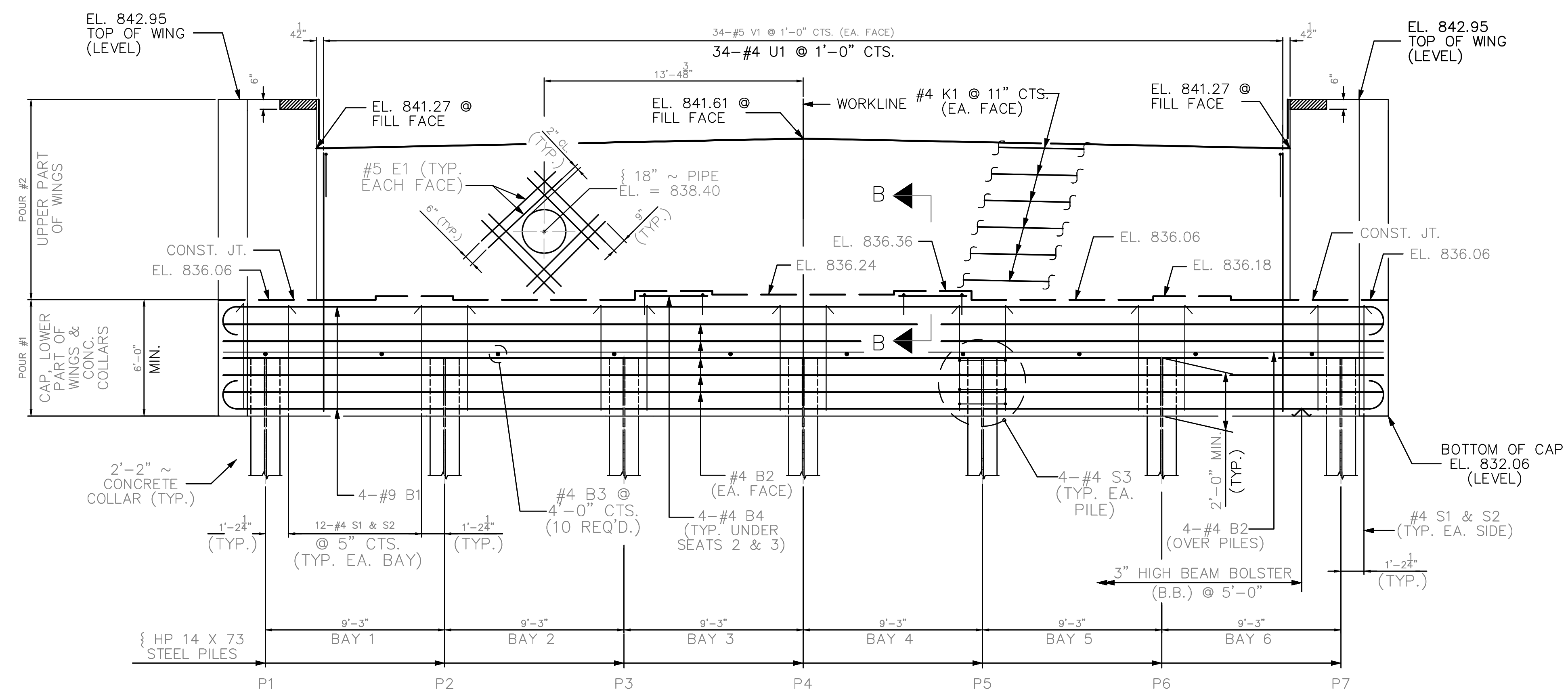
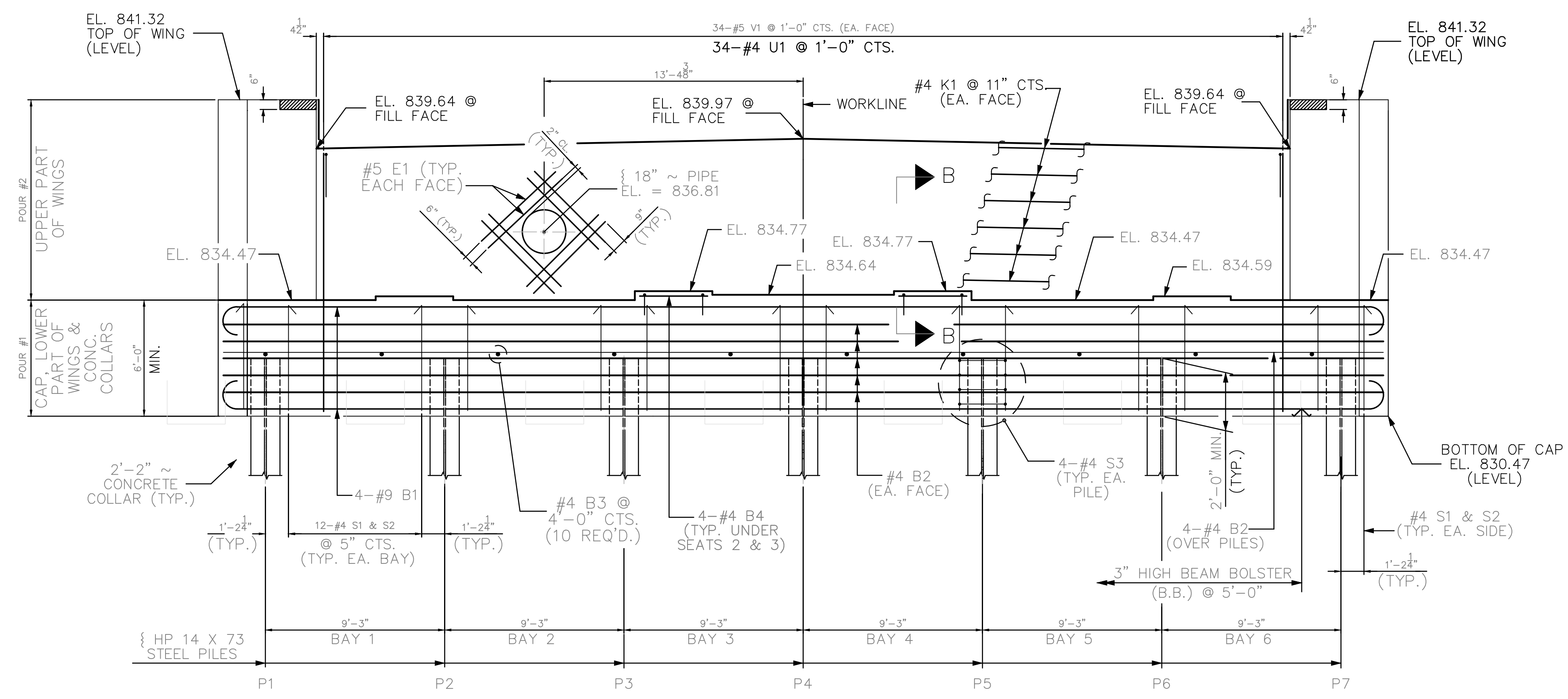


# PERMANENT WATER LINE DETAILS

PROJECT REFERENCE NO. <b>B-5772</b>	SHEET NO. <b>UC-3E</b>
DESIGNED BY: JDM	
DRAWN BY: RCC	
CHECKED BY:	
APPROVED BY:	
REVISED:	
NORTH CAROLINA DEPARTMENT OF TRANSPORTATION UTILITIES ENGINEERING SEC. PHONE: (919)707-6690 FAX: (919)250-4151 3/11/2022 UTILITY CONSTRUCTION PLANS ONLY	
<b>DOCUMENT NOT CONSIDERED FINAL UNLESS ALL SIGNATURES COMPLETED</b>	
 alley, williams, carmen, & king, inc. CONSULTING ENGINEERS FIRM LICENSE No. F-0203 120 SOUTH MAIN STREET KANNAPOLIS, NC 28062 P.O. BOX 1248 704/938-1515	



ELEVATION @ END BENT 1



ELEVATION @ END BENT 2

**NOTE:**  
END BENT ELEVATIONS THAT ARE SHOWN ON THIS SHEET WERE DESIGNED BY NCDOT STRUCTURAL UNIT.