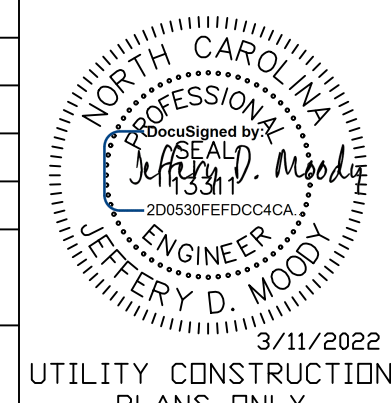
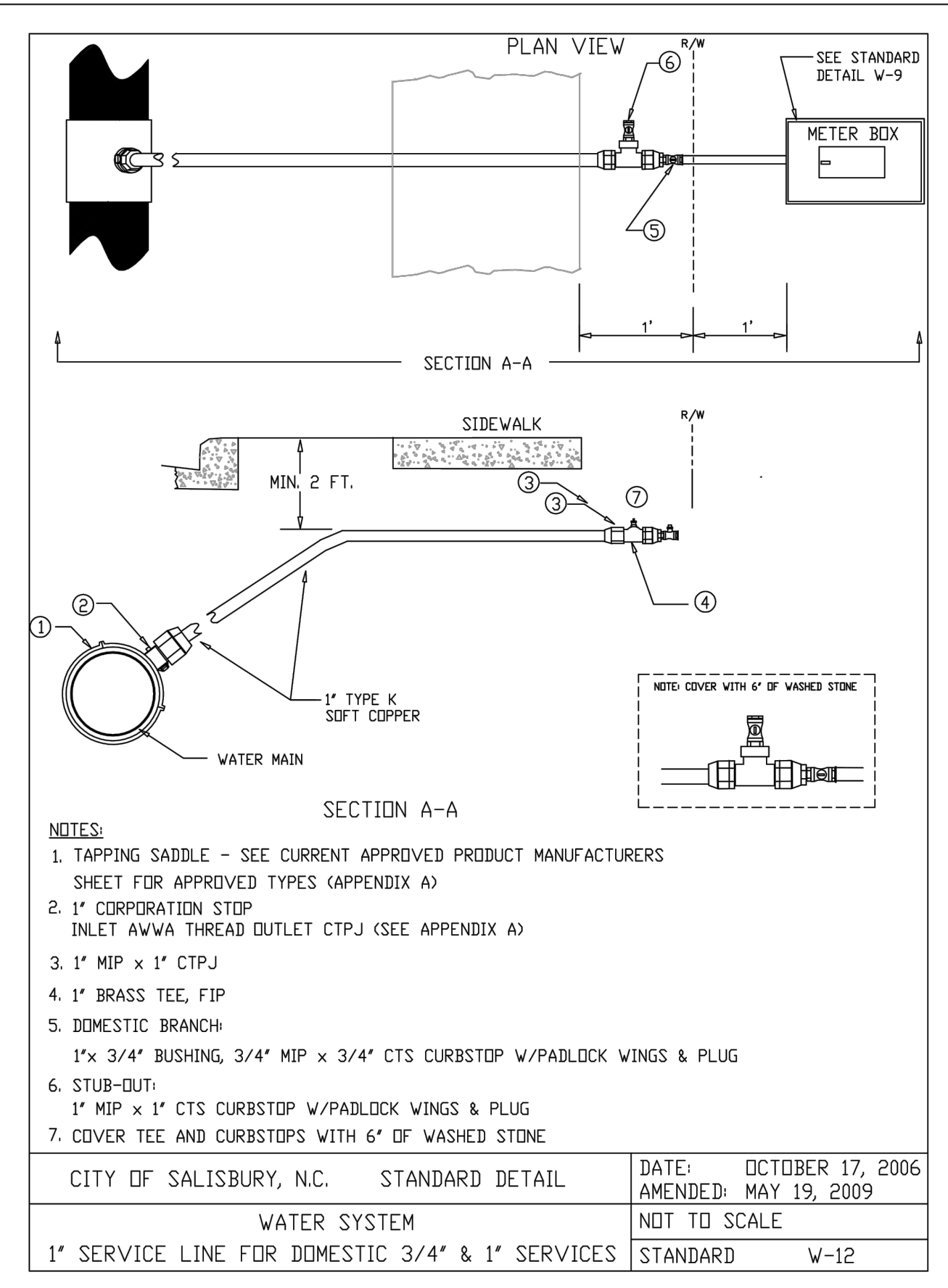
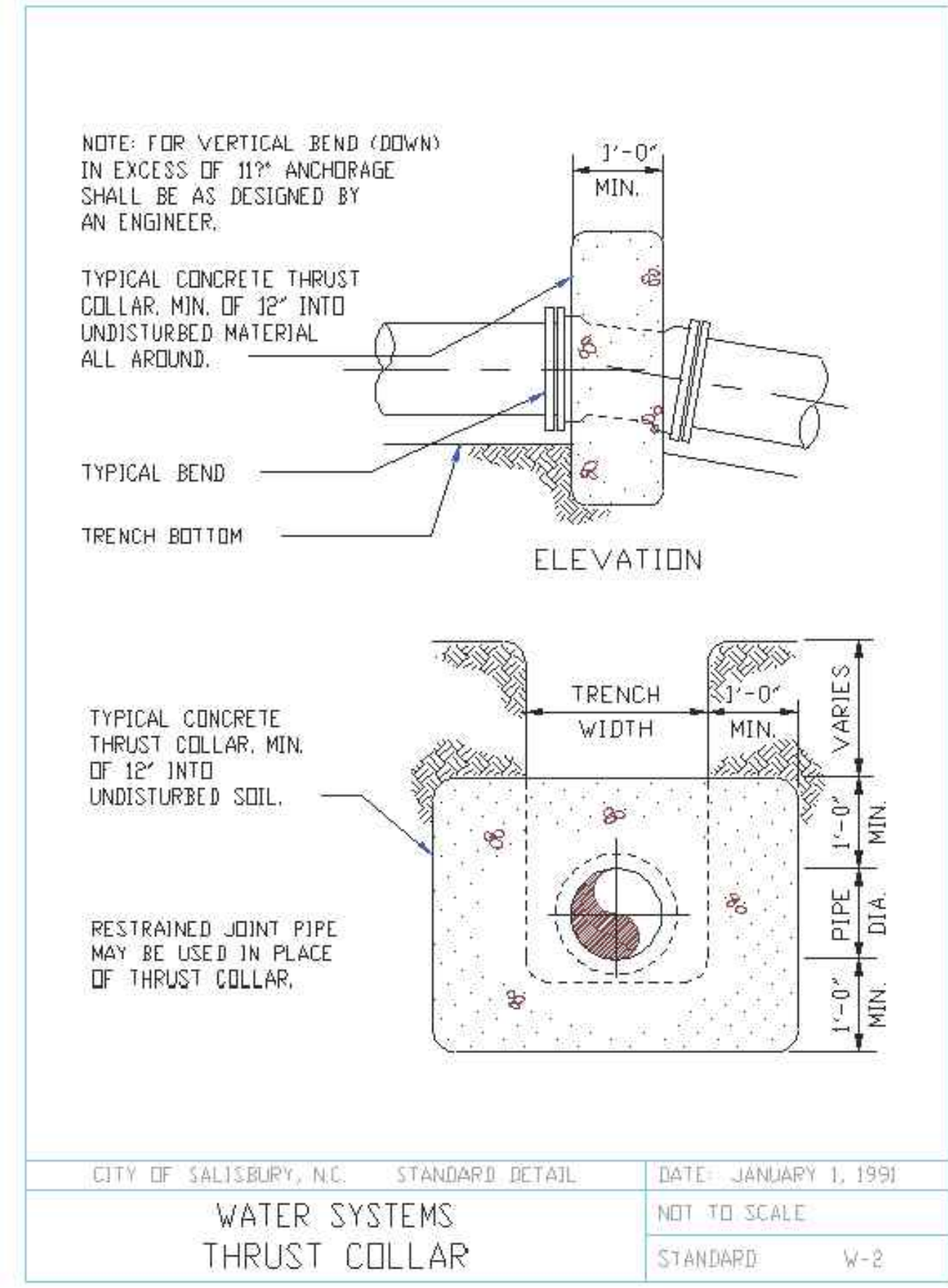


DESIGNED BY: JDM
DRAWN BY: RCC
CHECKED BY:
APPROVED BY:
REVISED:
NORTH CAROLINA DEPARTMENT OF TRANSPORTATION
UTILITIES ENGINEERING SEC. PHONE: (919)707-6690 FAX: (919)250-4151
3/11/2022
UTILITY CONSTRUCTION PLANS ONLY



DOCUMENT NOT CONSIDERED FINAL UNLESS ALL SIGNATURES COMPLETED

awwac alley, williams, carmen, & king, inc.
CONSULTING ENGINEERS
FIRM LICENSE No. F-0203
120 SOUTH MAIN STREET P.O. BOX 1248
KANNAPOLIS, NC 28082 704/938-1515



Appendix A

04-12-2018

City of Salisbury Water Sewer Maintenance Department
Approved Product Manufacturers (Domestic Products Only)

- Ductile Iron Pipe - Domestic, Pressure Class 350, AWWA C-151/ANSI A21.51, ANSI C-111/AWWA A21.11, AWWA C-150/ANSI A21.50:**
 - American Cast Iron Pipe Co.*
 - Griffin Pipe*
 - Tyler Pipe / Union Foundry*
 - U S Pipe*
 - Atlantic States*
- Ductile Iron Mechanical Joint Fittings - Domestic, Pressure Class 350, AWWA C-153/ANSI A21.53, AWWA C-111/ANSI A21.11, AWWA C-104/ANSI A21.4:**
 - Griffin Pipe*
 - Tyler Pipe / Union Foundry*
 - U S Pipe*
- Gate Valves - Resilient Seated, NRS, (3" - 16") 200 PSI Rating, (Open Left):**
 - American Flow Control Series 500 or 2500 (With Slotted Bolt Holes at 11:00 & 1:00 position Only)*
 - Clow Series F-6100 (With Slotted Bolt Holes at 11:00 & 1:00 position Only)*
 - Mueller Series 2360 (With Slotted Bolt Holes at 11:00 & 1:00 position)*
- Tapping Valves - Resilient Seated, NRS (4" - 16") Flange x M.J. 200 PSI Rating, (Open Left):**
 - American Flow Control Series 500 or 2500 (No Slots on Flange side)*
 - Clow F-6114 (No Slots on Flange side)*
 - Mueller T-2360*
- Ductile Iron Tapping Sleeve - Two-Piece (4" through 12") M.J. 200 PSI Rating:**
 - American Flow Control Series 2800 (No Slots on Tapping Flange side)*
 - Mueller H-615 (No Slots on Tapping Flange side)*
 - Tyler/Union*
- Cast Iron Valve Boxes - Two-Piece:**
 - Tyler Series 6855 Slip-Type with 5 1/4" Drop Lid*
- Fire Hydrants - 200 PSI minimum Rating, Grease Filled, Painted Silver, 6" M.J. Shoe, (2) 2-1/2" Hose & (1) 4-1/2" Pumper Nozzles (bronze) with NST Threads, 4-1/2" Main Valve Opening (Open Left), UL Listed & FM Approved:**
 - American Flow Control MK-73*
 - Clow Medallion*
 - Mueller Super Centurion*

Appendix A

04-12-2018

- Curb Stops - Full Port Ball Valve, (Brass with Padlock Wings):**
 - Ford B11W & B41W* No Lead
 - McDonald 6101W & 6102W* No Lead
- Corporation Stops - Ball Valve, (3/4" - 1", Brass, AWWA/CC Thread Inlet x Copper Tube Compression Nut Outlet):**
 - Ford FB1000G* No Lead
 - McDonald 4701BT* No Lead
 - Mueller B-25008* No Lead
- Corporation Stops - Ball Valve, (1-1/2" - 2", Brass, AWWA/CC Thread Inlet x Copper Tube Pack Nut Outlet):**
 - Ford FB1000* No Lead
 - McDonald 4701B-22* No Lead
 - Mueller P-25008* No Lead
- Service Saddles for AC/CI/DI Pipe - (Stainless Steel Double Strap, Nylon Coated Ductile Iron Saddle):**
 - Romac 202NS*
 - Smith-Blair 317*
- Service Saddles for PVC Pipe - (Brass):**
 - Ford S70 & S90*
 - McDonald 3801, 3805, 3891 & 3895*
- Copper Meter Setters:**
 - Ford CS-VBEHC72-95157-05 for 3/4" Services* No Lead
 - McDonald 21U207WNTT33 for 3/4" Services* No Lead
 - Ford CS-VBEHC74-95319-03 for 1" Services* No Lead
 - McDonald 21U412WNTT44 for 1" Services* No Lead
 - Ford VBHH77-15HBHC-41-77 for 2" Services* No Lead
 - McDonald 26R715WD2F7754 for 2" Services* No Lead
- Copper Tubing:**
 - Type "K" soft, ASTM B-88*
- Miscellaneous Brass Couplings:**
 - Ford* No Lead
 - McDonald* No Lead
 - Mueller* No Lead

Appendix A

04-12-2018

- Meter Boxes:**
 - DFW Plastics Inc. - DFW1324C-18-BODY with DFW Plastics Inc. - DFW1324C-1CF ORION-LID for 3/4" & 1" Services (meter box lids shall be plastic lids with recessed knockouts for cellular transmitters)*
 - DFW Plastics Inc. - DFW1730C-18-BODY with DFW Plastics Inc. - DFW1730C-1CF ORION-LID for 2" services (meter box lids shall be plastic lids with recessed knockouts for cellular transmitters)*
- Joint Restraint:**
 - EBAA Megalug 1100 Series for DI/CI Pipe*
 - EBAA Megalug 2000PV Series for PVC Pipe*
 - Romac GripRing PVC/DI/CI Pipe*
 - UNI-FLANGE 1400 ("U" domestic) Series for DI/CI Pipe*
 - UNI-FLANGE 1500 ("U" domestic) Series for PVC Pipe*
- Cast Couplings, Straight & Transition:**
 - Ford FC1 & FC2*
 - Romac 501*
 - Smith-Blair 441*
- Repair Clamps: (repair only - not approved for new construction)**
 - Romac Stainless Steel SS1 & SS2*
 - Smith-Blair Stainless Steel 261 & 262*
- RP Backflows - University of Southern California Foundation for Cross-Connection Control & Hydraulic Research Approval:**
 - Ames*
 - Cobraco*
 - Febco*
 - Wilkins*
- Sewer Manholes - Domestic, Gray Iron Castings Conform to ASTM-A48 Class 35B, Ductile Iron Casting Conform to ASTM-A536, NCDOT 840.54 Standard, Support H20 Wheel Load, Cover dimension of 23-1/2" x 1" thick across the top with a minimum weight of 125Lbs. Marked "Sanitary Sewer". Frame dimension of 7-1/2" tall x 33-1/4" across the bottom with a minimum weight of 189Lbs:**
 - East Jordan Iron Works #41384173*
 - U.S. Foundry 669KL*
- PVC Pipe & Fittings - Pressure Rated Water Distribution, ASTM D-1784, ASTM D-2241:**

Appendix A

04-12-2018

- 2" - SDR 13.5, Class 315*
- 6" - 8" AWWA C900 - DR14, Class 200*

- PVC Pipe & Fittings - Gravity Sewer, ASTM D-3034, ASTM F-679, ASTM D-2665 (Charlotte Pipe, North American, or approved equal):**
 - 4" - 30" SDR-35*
 - 4" - 6" SCH 40 NSF-DW*
- Sewer Transition Couplings - (repair only - not allowed on new construction):**
 - Femco Strong Back - RC Coupling Series*
 - Mission Rubber Company, Flex - Seal ARC MR Series Couplings
- Sewer Wyes:**
 - Saddle Wye - Contech PFSP & PFTP style*
 - Adapter - Harco 35-4004 (4") & 35-4006 (6") Plastic Trends P1213 (4") P1215 (6")*
 - Wye - Lasco, Charlotte Pipe, Spears, or approved equal*

*Note: Some manufacturers are producing both domestic and import materials. In some instances the part numbers may be the same or have just a letter or number difference (example - the Ford Uni-Flange 1400 series joint restraint - a "U" has been added to the part number for USA made). **Only the domestic manufactured materials will be accepted.** Suppliers and contractors should verify the materials are domestically manufactured before installation. Shop drawings are required to be submitted and approved prior to the start of construction.

