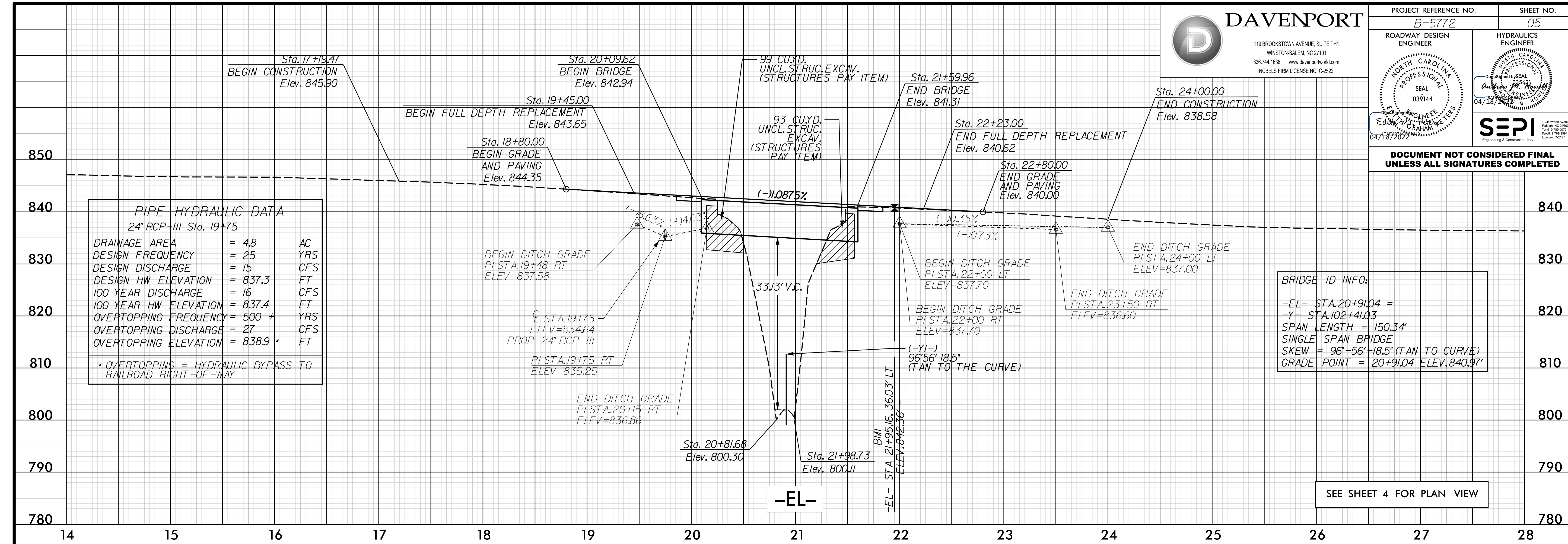




119 BROOKSTOWN AVENUE, SUITE PH1  
WINSTON-SALEM, NC 27101  
336.744.1636 www.davenportworld.com  
NCBELS FIRM LICENSE NO. C-2522

PROJECT REFERENCE NO. B-5772	SHEET NO. 05
ROADWAY DESIGN ENGINEER	HYDRAULICS ENGINEER
<b>DOCUMENT NOT CONSIDERED FINAL UNLESS ALL SIGNATURES COMPLETED</b>	



PIPE HYDRAULIC DATA	
24" RCP-III Sta. 19+75	
DRAINAGE AREA	= 4.8 AC
DESIGN FREQUENCY	= 25 YRS
DESIGN DISCHARGE	= 15 CFS
DESIGN HW ELEVATION	= 837.3 FT
100 YEAR DISCHARGE	= 16 CFS
100 YEAR HW ELEVATION	= 837.4 FT
OVERTOPPING FREQUENCY	= 500 YRS
OVERTOPPING DISCHARGE	= 27 CFS
OVERTOPPING ELEVATION	= 838.9 FT
* OVERTOPPING = HYDRAULIC BYPASS TO RAILROAD RIGHT-OF-WAY	

BRIDGE ID INFO:  
 -EL- STA.20+91.04 =  
 -Y- STA.102+41.03  
 SPAN LENGTH = 150.34'  
 SINGLE SPAN BRIDGE  
 SKEW = 96°-56'-18.5" (TAN TO CURVE)  
 GRADE POINT = 20+91.04 ELEV.840.97'

SEE SHEET 4 FOR PLAN VIEW

3:53:30 PM 2/20/16 16:09:11 NCDOT\_B5772\_HurleySch\DESIGN\03\_CADD\B5772\_Roadway\Proc\B5772\_Rdwy\_PFL\_01.dgn