

Hazardous Materials Report (July 20, 2012)

The GeoEnvironmental Section of the Geotechnical Engineering Unit has investigated the above referenced project to identify hazardous material sites for inclusion in the environmental document.

HAZARDOUS MATERIALS EVALUATION

Purpose

This section presents the results of a hazardous material evaluation conducted along the above referenced project. The main purpose of this investigation is to identify properties within the project study area that are or may be contaminated and therefore could result in increased project costs and future liability if acquired by the Department. Hazardous material impacts may include, but are not limited to, active and abandoned underground storage tank (UST) sites, hazardous waste sites, regulated landfills and unregulated dumpsites.

Techniques/Methodologies

The Geographical Information System (GIS) was consulted to identify known sites of concern in relation to the project corridor. GeoEnvironmental Section personnel conducted field reconnaissance surveys along the project corridor on March 1, 2012. A search of appropriate environmental agencies' databases was performed to assist in evaluating sites identified during this study.

Findings

UST Facilities

Based on our study, two (2) sites may contain petroleum USTs within the project limits. Site one (1) is a possible old gas station that may have UST(s). Associated with Site 2 are four (4) ASTs that are in use at a current gas station and six (6) USTs that were removed in 1988 and which appear to be associated with a NCDENR Groundwater Incident.

Hazardous Waste Sites

No Hazardous Waste Sites were identified within the project limits.

Landfills

No apparent landfills were identified within the project limits.

Other GeoEnvironmental Concerns

No other geoenvironmental concerns were identified within the project limits.

Anticipated Impacts

There are two (2) possible UST facilities. Site one (1) is a possible old gas station that may have UST(s). Site two (2), a current gas station, has four (4) ASTs that are currently in use and reportedly

had six (6) USTs that were removed in 1988, which appear to be associated with a NCDENR Groundwater Incident. No other geoenvironmental concerns were identified within the proposed project corridor. We anticipate low monetary and scheduling impacts resulting from these sites. See Appendices A and B for an area map and site photographs.

Known and Potential Hazardous Material Sites

| | | |
|----|---|--|
| 1) | Property Name: Vacant Lot 7312 NC 33 E Grimesland, NC 27837 | Property Owner: Wilson Jesse Ray 6886 NC 33 E Grimesland, NC 27837 |
|----|---|--|



This property is located at the eastern corner of the intersection of NC 33 and Mobley's Bridge Road. It is currently a gravel lot. The site's location is consistent with many gas station locations. According to the Pitt County GIS Website, the site formerly had a store. That store may have had USTs. Thus, UST(s) may be associated with this site. There are no registered UST(s) known to be associated with this site. This site is anticipated to present low geoenvironmental impacts to the project. (View of photo is toward the northeast).

| | | |
|----|---|---|
| 2) | Property Name Shell 7330 NC 33 E Grimesland, NC 27837 | Property Owner: Eng Arve PO BOX 55 Grimesland, NC 27837 |
| | Groundwater Incident #: 2991 | |



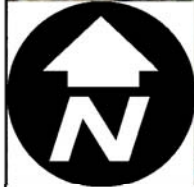
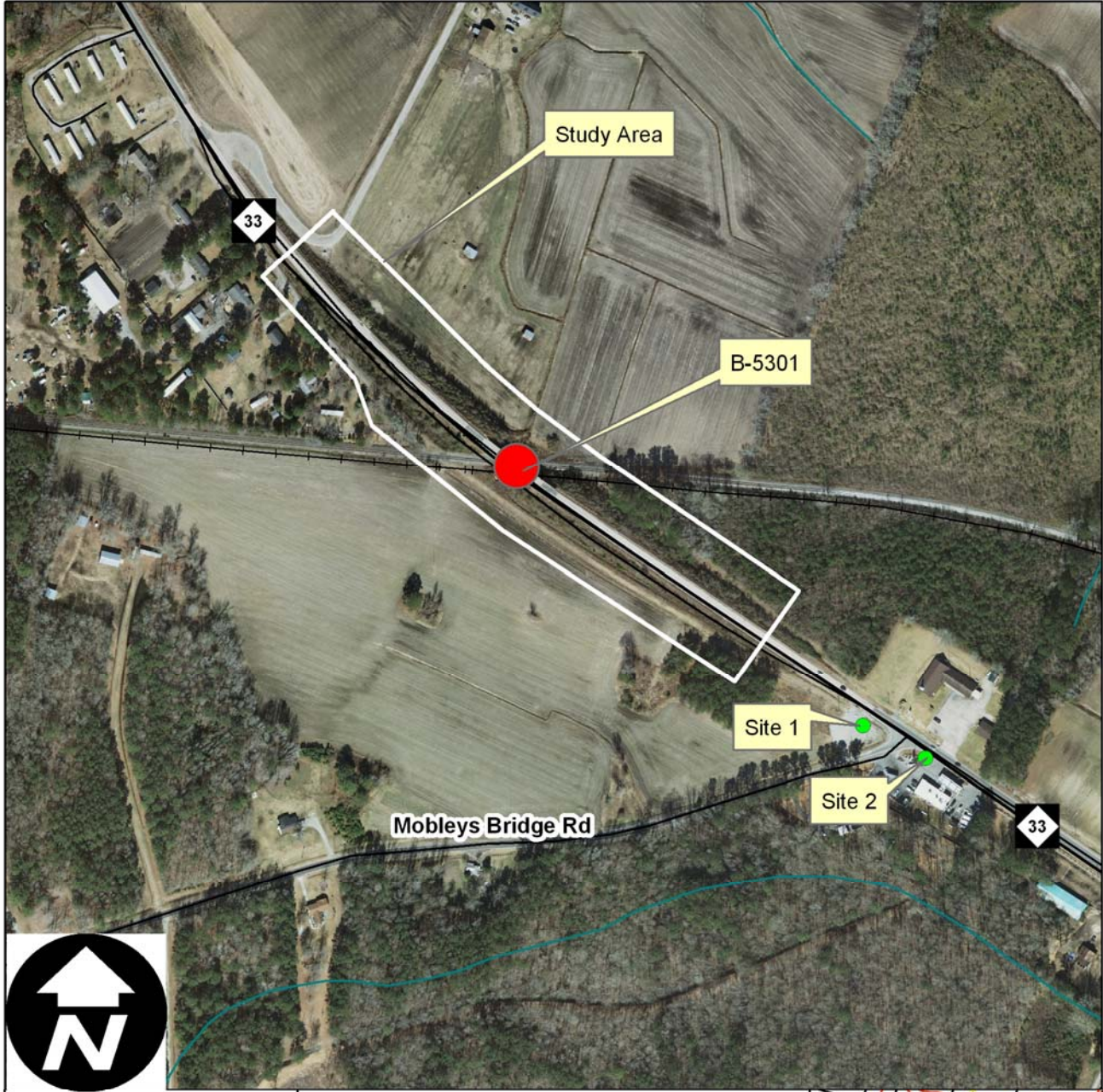
This active Shell gas station is located at the southeastern corner of the intersection of NC 33 and Mobley's Bridge Road. The site comprises two parcels attributed to the same property owner. There are four (4) ASTs currently in use at the site. Six (6) USTs (3 8,000 gal & 3 2,000 gal) were closed in 1988. The site is associated with an NCDENR Groundwater Incident at facility: Kash & Carry #10. This corroborates with the Pitt County GIS website that attributes the Prior Legal Description of the site to Kash-Karry. This site is anticipated to present low geoenvironmental impacts to the project. (View of photo is toward the southeast.)

The Geotechnical Engineering Unit can provide assessments on each of the above properties after identification of the selected alternative and before right of way acquisition. Please note that discovery of additional sites not recorded by regulatory agencies and not reasonably discernable during the project reconnaissance may occur. The Geotechnical Engineering Unit should be notified immediately after discovery of such sites so their potential impact(s) may be assessed.

If there are questions regarding the geoenvironmental issues, please contact me, at 919-707-6859.

Gordon Box, LG
GeoEnvironmental Project Manager
GeoEnvironmental Section
Geotechnical Engineering Unit

Appendix A
Location of USTs, Landfills, & Other Potentially Contaminated Sites

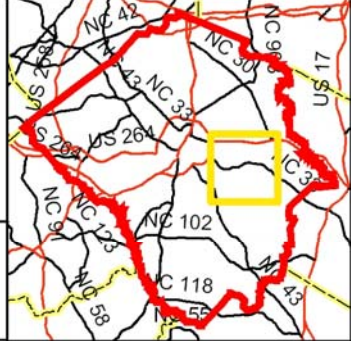


Project: 46015.1.1 (TIP # B-5301)
Bridge # 87 over Norfolk Southern Railroad on NC 33
Pitt County

500 250 0 500 Feet



NC Department of Transportation
Geotechnical Engineering Unit
GeoEnvironmental Section



Appendix B

TIP: B-5301 WBS: 46015.1.1 Site Photographs March 1, 2012



Bridge 87: Looking southward toward Bridge 87.



Bridge 87: Looking westward toward Bridge 87.



Bridge 87: Looking eastward toward Bridge 87.



Bridge 87: Looking northward toward Bridge 87.