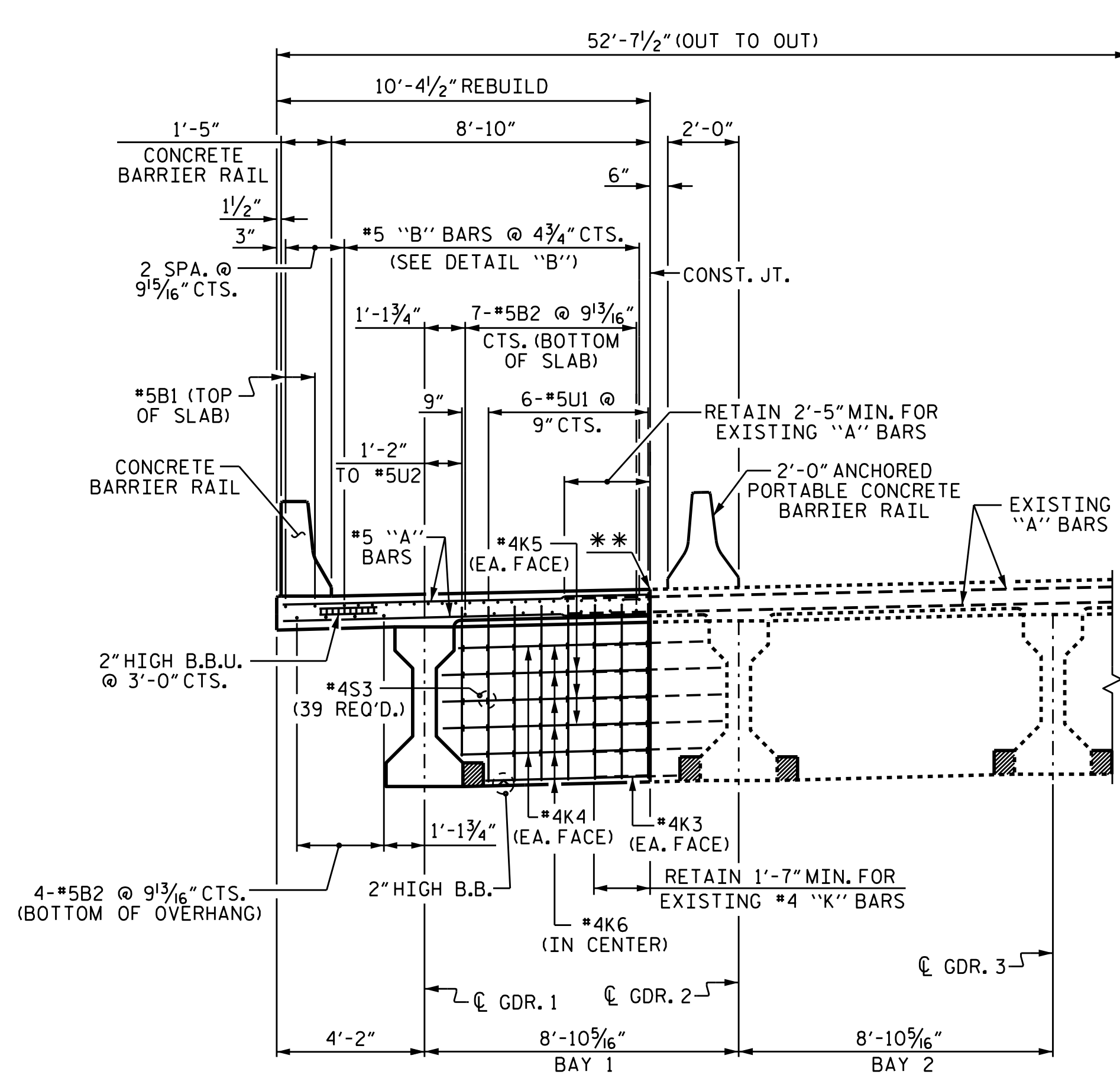
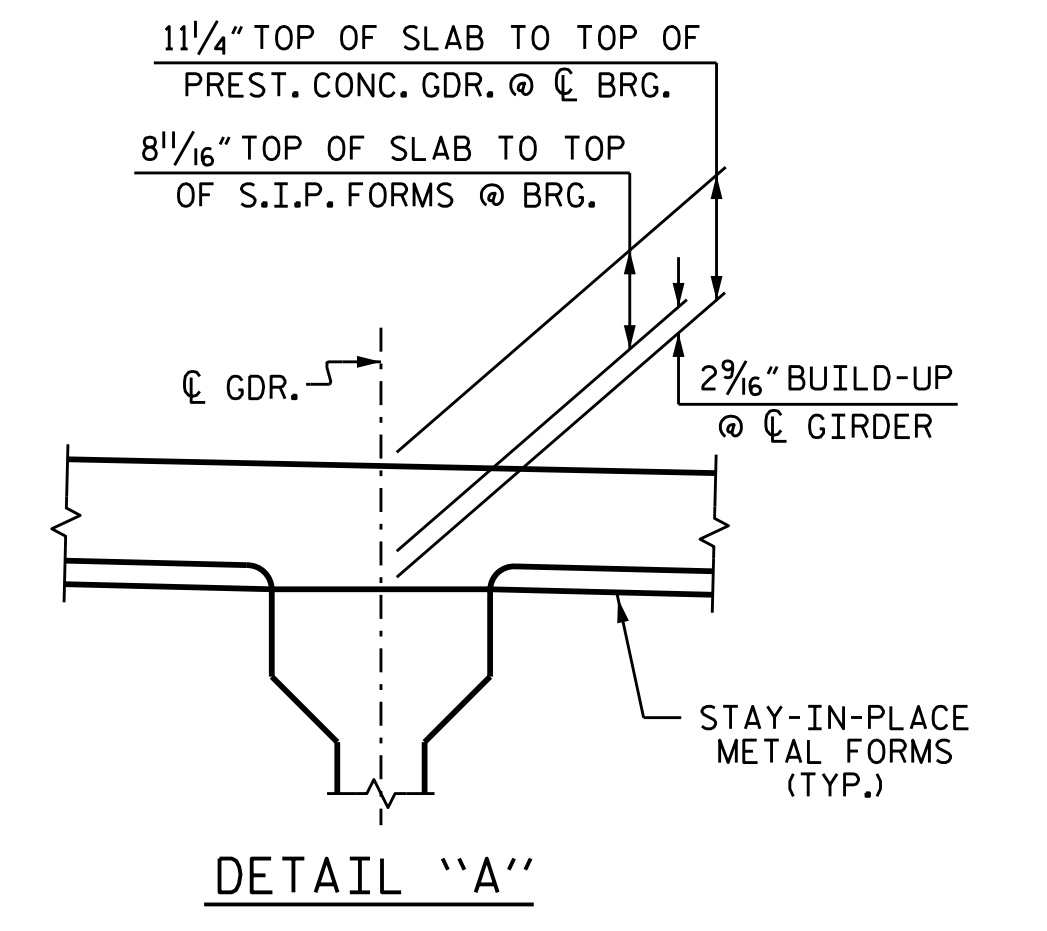


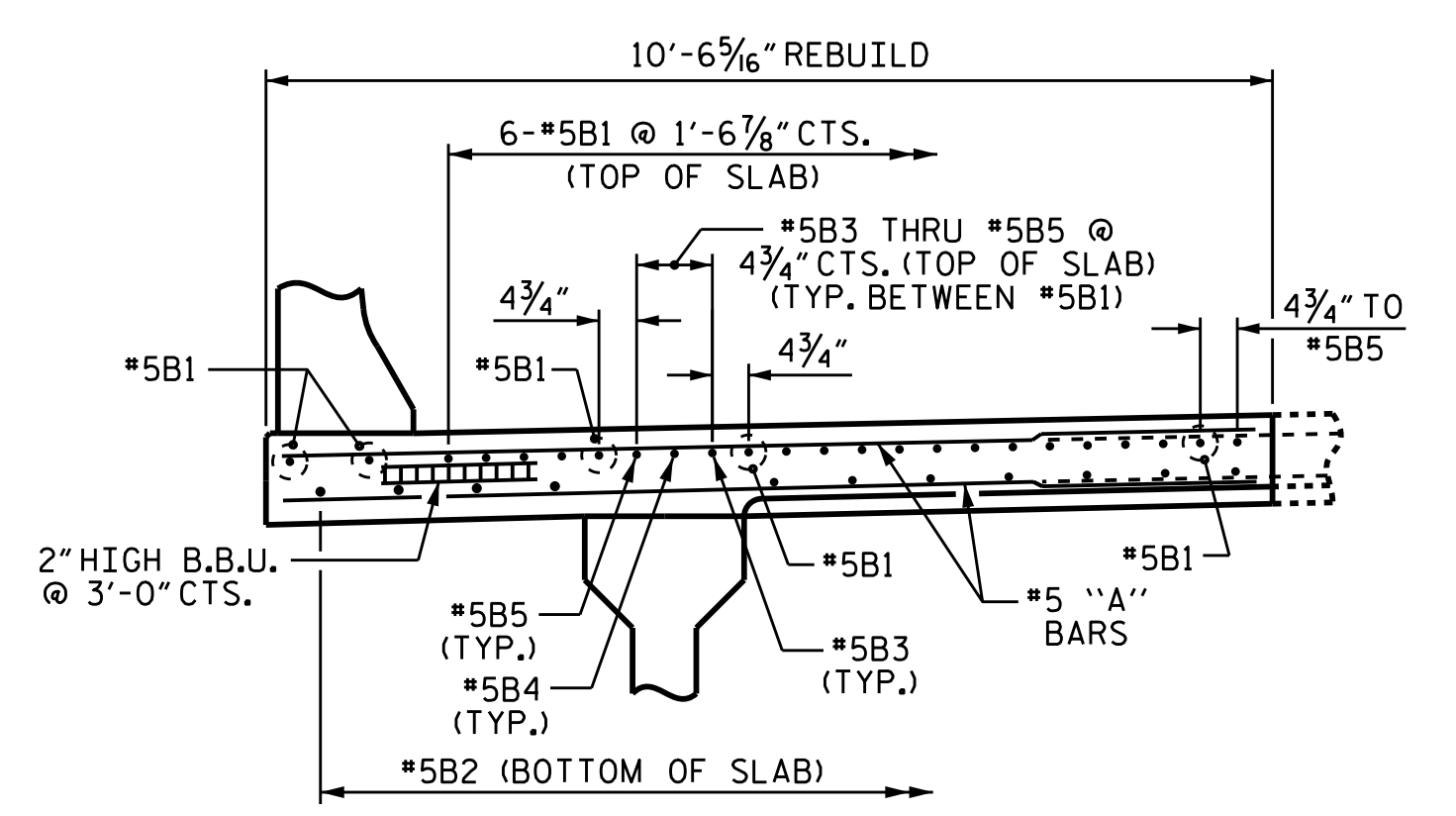
PARTIAL SECTION END BENT DIAPHRAGMS



PARTIAL SECTION CONTINUOUS BENT DIAPHRAGM



DETAIL "A"

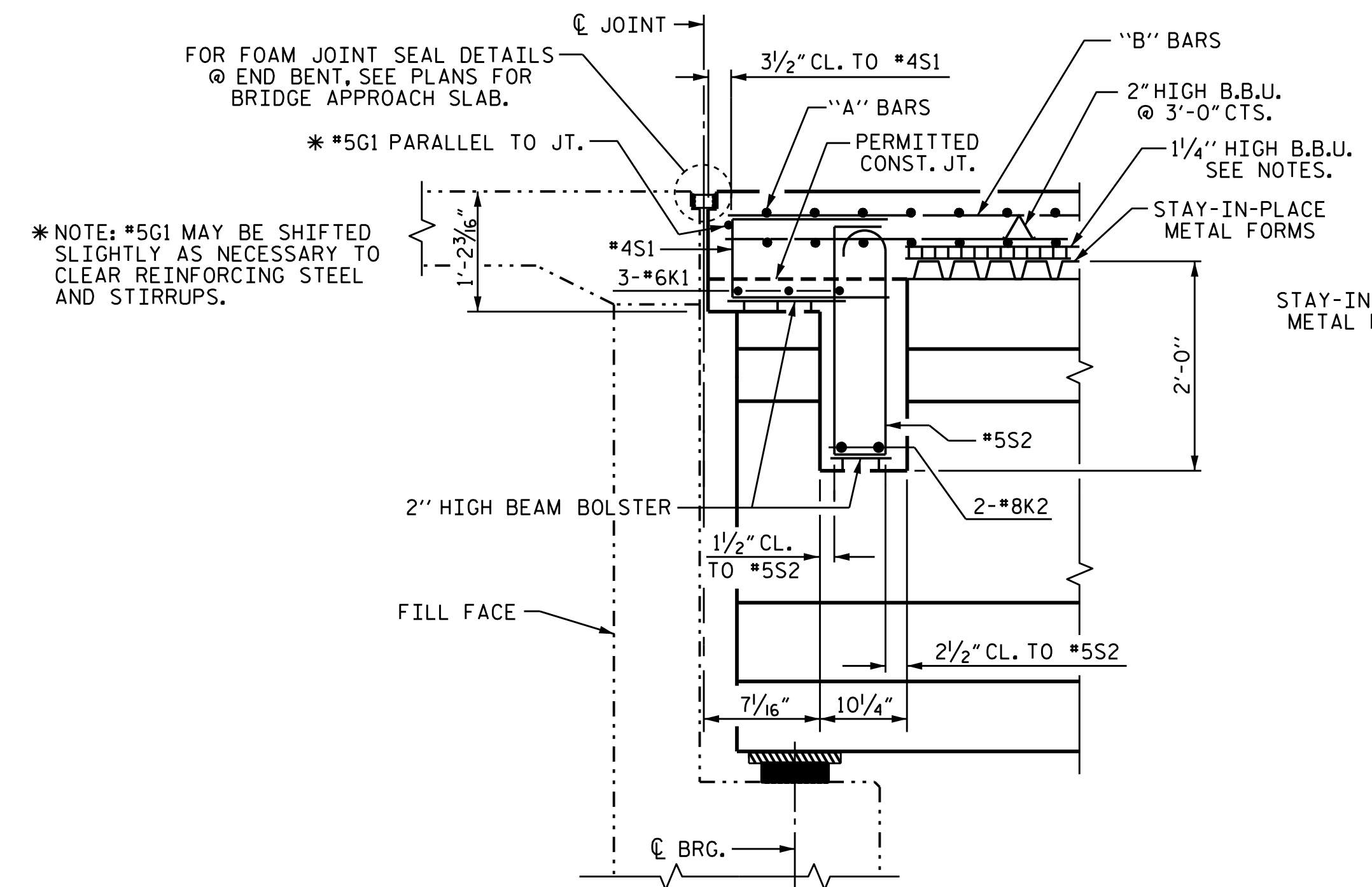


DETAIL "B"

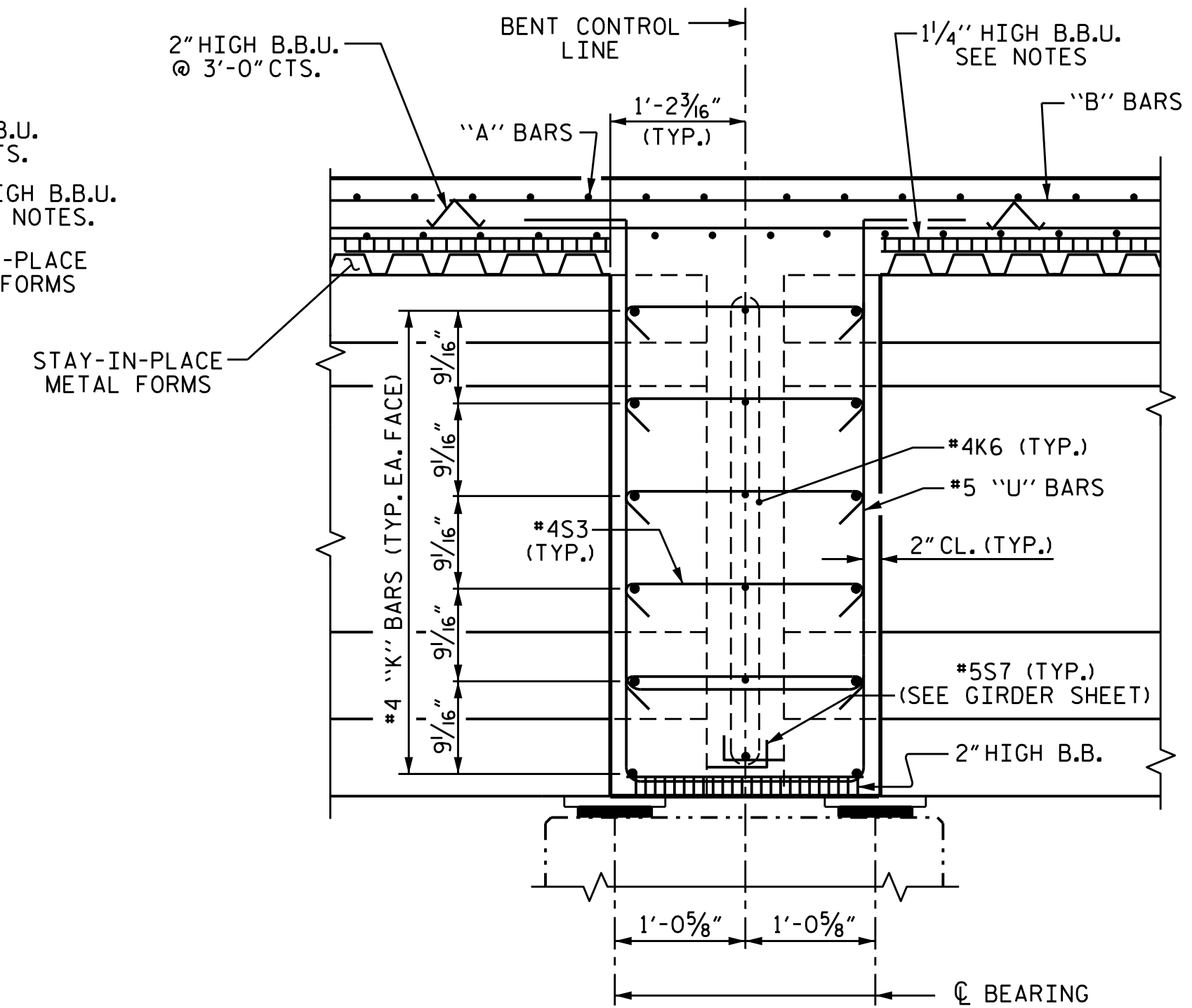
(DETAIL SHOWING "B" BARS IN REBUILD AREA) (SEE "PARTIAL PLAN OF SPAN A" FOR ADDITIONAL DETAILS)

** AT LONGITUDINAL AND TRANSVERSE LOCATIONS INDICATED ON BRIDGE DECK FOR CONSTRUCTION JOINT, PROVIDE 1" DEEP SAW CUT FOR THE CONSTRUCTION JOINT AT SURFACE OF DECK. BELOW SAW CUT, REMOVE CONCRETE IN DECK AND DIAPHRAGMS WITH APPROPRIATE METHODS. RETAIN RESPECTIVE EXISTING REINFORCING STEEL AT MINIMUM SPLICE LENGTHS AS INDICATED. WHEN REPLACING CONCRETE, SPLICE NEW REINFORCING STEEL TO EXISTING REINFORCING STEEL, AS APPROPRIATE.

TYPICAL SECTION



SECTION THRU END BENT DIAPHRAGM



SECTION THRU CONTINUOUS BENT DIAPHRAGM

PROJECT NO. 41665.13C
PITT COUNTY
BRIDGE NO. 730472

SHEET 1 OF 2

STATE OF NORTH CAROLINA
DEPARTMENT OF TRANSPORTATION
RALEIGH

TYPICAL SECTION



DocuSigned by:
P. Corey Newton
4FE38D1431B407...
03/21/2022

DRAWN BY : M.K. BEARD DATE : 6/23/21
CHECKED BY : D.R. SHACKELFORD DATE : 6/24/21

REVISIONS						SHEET NO. S2-2 TOTAL SHEETS 14
NO.	BY:	DATE:	NO.	BY:	DATE:	
1			3			
2			4			

DOCUMENT NOT CONSIDERED
FINAL UNLESS ALL
SIGNATURES COMPLETED