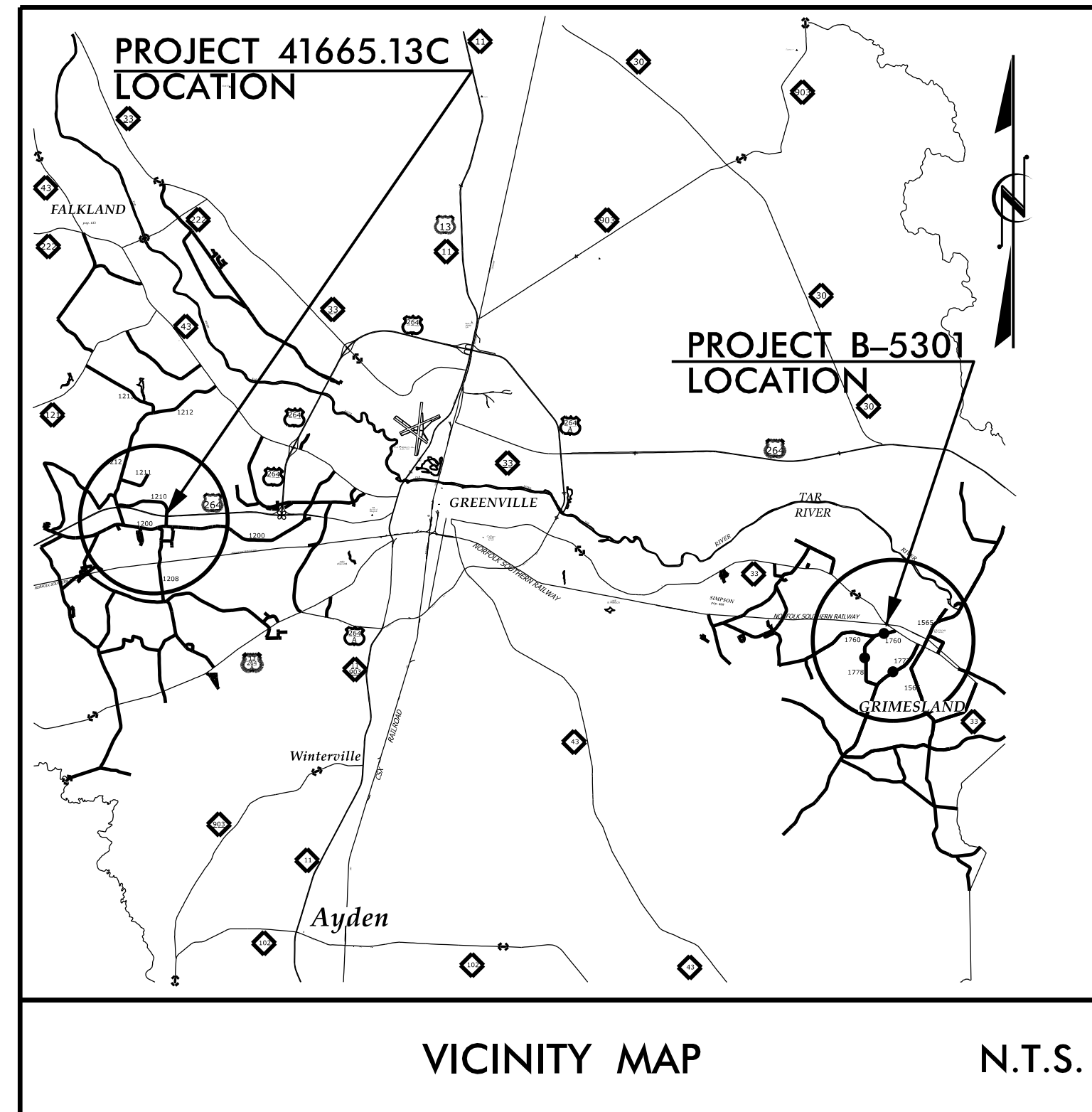


TIP PROJECT: B-5301 / 41665.13C

CONTRACT: C204414



STATE OF NORTH CAROLINA
DIVISION OF HIGHWAYS
PITT COUNTY

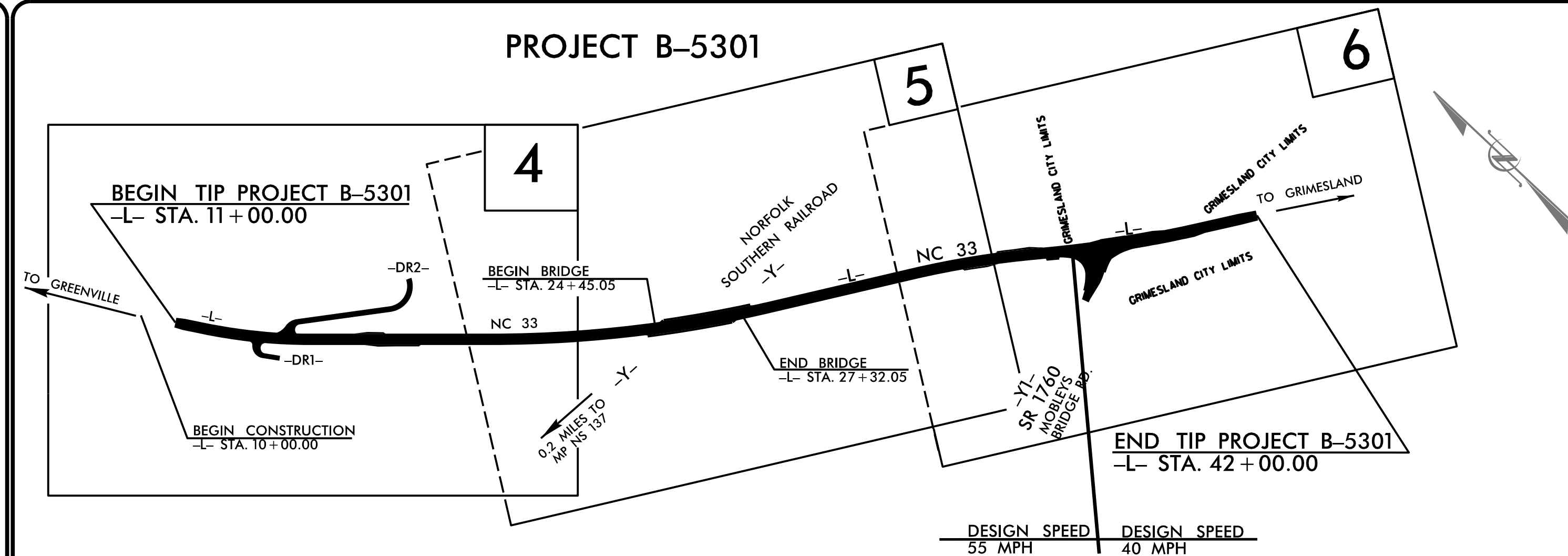
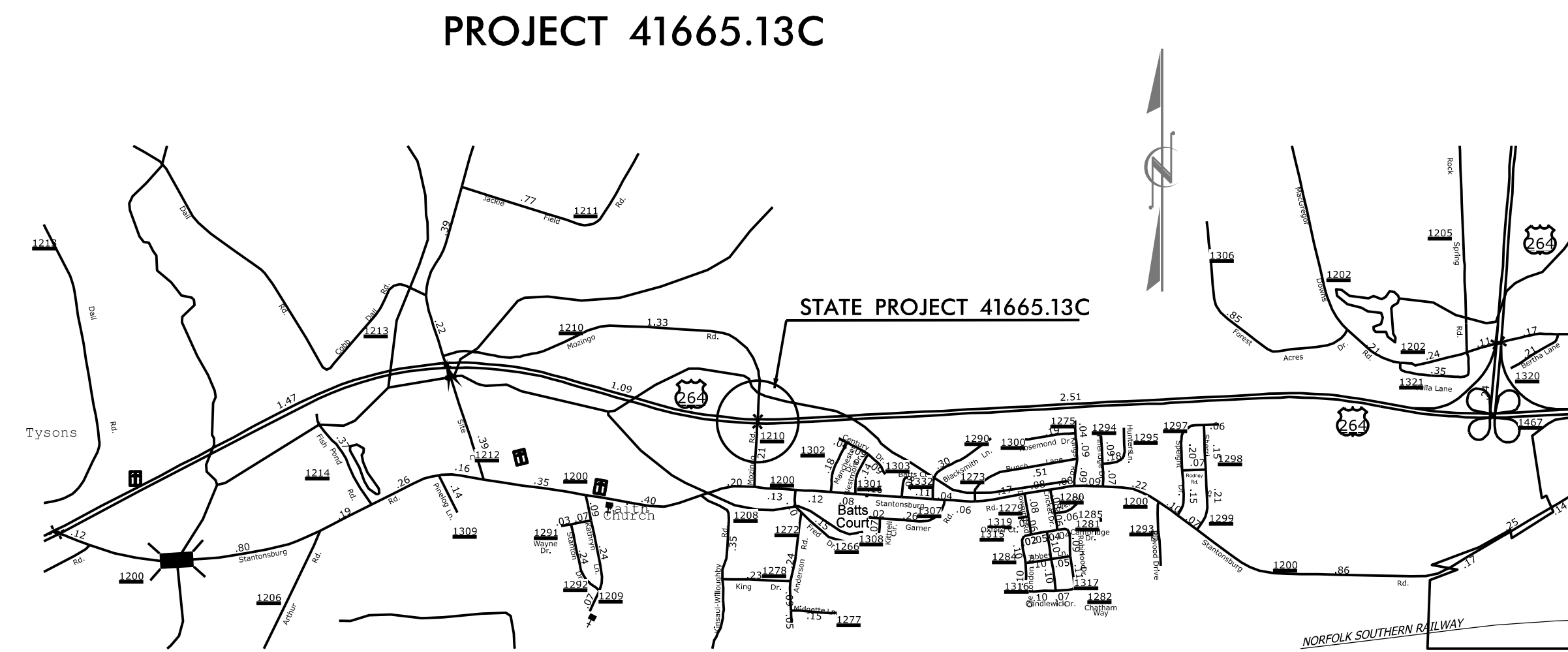
B-5301 LOCATION: BRIDGE NO. 87 OVER NORFOLK SOUTHERN RAILROAD ON NC 33

TYPE OF WORK: GRADING, DRAINAGE, STRUCTURE & PAVING

41665.13C LOCATION: BRIDGE 730422 ON MOZINGO ROAD OVER US 264 IN PITT COUNTY

TYPE OF WORK: CONCRETE BRIDGE REPAIR

| STATE | STATE PROJECT REFERENCE NO. | SHEET NO. | TOTAL SHEETS |
|-----------------|-----------------------------|-------------|--------------|
| N.C. | B-5301 / 41665.13C | 1 | |
| STATE PROJ. NO. | P.A. PROJ. NO. | DESCRIPTION | |
| 46015.1.1 | BRSTP-033(13) | PE | |
| 46015.2.1 | | RW & UTIL. | |
| 46015.3.1 | | CONST. | |
| 41665.13C | | PE & CONST. | |



STRUCTURES



DESIGN DATA - B-5301

ADT 2020 = 9,300
ADT 2040 = 13,200
K = 11%
D = 60%
T = 8% **
* V = 40/55 MPH
** (TTST 3%, DUAL 5%)
FUNC CLASS=MAJOR COLLECTOR
REGIONAL TIER

PROJECT B-5301 LENGTH

LENGTH ROADWAY TIP PROJECT B-5031 = 0.533 MILES
LENGTH STRUCTURE TIP PROJECT B-5031 = 0.054 MILES
TOTAL LENGTH TIP PROJECT B-5031 = 0.587 MILES

PROJECT 41665.13C LENGTH

STATE PROJECT LENGTH = 0.019 MILES

2018 STANDARD SPECIFICATIONS

LETTING DATE :

JUNE 21, 2022

Prepared In the Office of:
DIVISION OF HIGHWAYS
STRUCTURES MANAGEMENT UNIT
1000 BIRCH RIDGE DR.
RALEIGH, N.C. 27610

KRISTY W. ALFORD, P.E.
PROJECT ENGINEER

P. KOREY NEWTON, P.E.
PROJECT DESIGN ENGINEER

ANDREW L. PHILLIPS, P.E.
PROJECT ENGINEER - KIMLEY-HORN