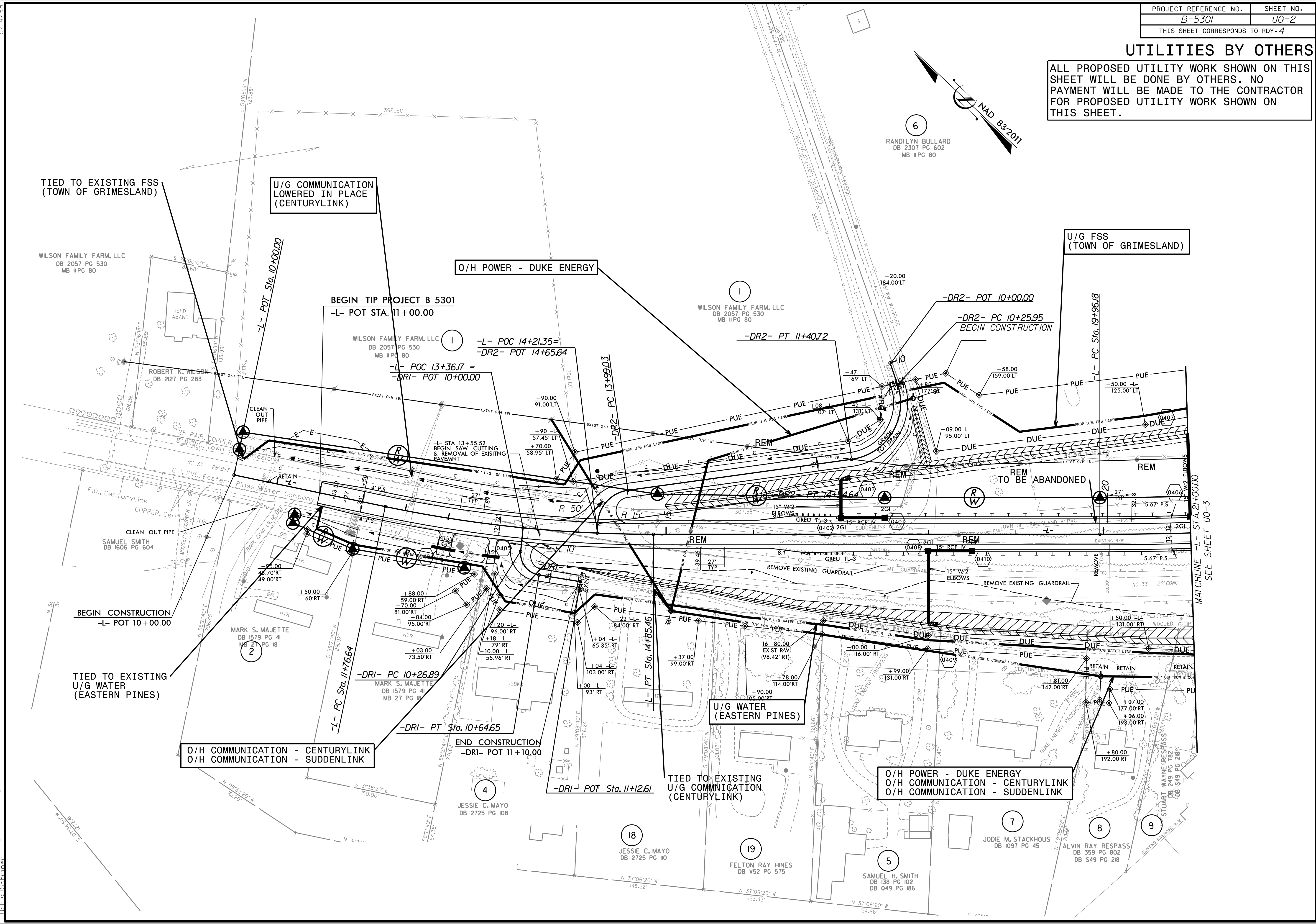


UTILITIES BY OTHERS

ALL PROPOSED UTILITY WORK SHOWN ON THIS SHEET WILL BE DONE BY OTHERS. NO PAYMENT WILL BE MADE TO THE CONTRACTOR FOR PROPOSED UTILITY WORK SHOWN ON THIS SHEET.



TIED TO EXISTING FSS (TOWN OF GRIMESLAND)

U/G COMMUNICATION LOWERED IN PLACE (CENTURYLINK)

O/H POWER - DUKE ENERGY

U/G FSS (TOWN OF GRIMESLAND)

WILSON FAMILY FARM, LLC
DB 2057 PG 530
MB #PG 80

BEGIN TIP PROJECT B-5301
-L- POT STA. 11+00.00

WILSON FAMILY FARM, LLC
DB 2057 PG 530
MB #PG 80

-DR2- POT 10+00.00
-DR2- PC 10+25.95
BEGIN CONSTRUCTION

WILSON FAMILY FARM, LLC
DB 2057 PG 530
MB #PG 80
-L- POC 14+21.35=
-DR2- POT 14+65.64
-L- POC 13+36.77 =
-DRI- POT 10+00.00

-DR2- PT 11+40.72

BEGIN CONSTRUCTION
-L- POT 10+00.00

TIED TO EXISTING U/G WATER (EASTERN PINES)

O/H COMMUNICATION - CENTURYLINK
O/H COMMUNICATION - SUDDENLINK

U/G WATER (EASTERN PINES)

O/H POWER - DUKE ENERGY
O/H COMMUNICATION - CENTURYLINK
O/H COMMUNICATION - SUDDENLINK

END CONSTRUCTION
-DRI- POT 11+10.00

TIED TO EXISTING U/G COMMUNICATION (CENTURYLINK)

JESSIE C. MAYO
DB 2725 PG 108

JESSIE C. MAYO
DB 2725 PG 110

FELTON RAY HINES
DB V52 PG 575

SAMUEL H. SMITH
DB 049 PG 186

JODIE M. STACKHOUS
DB 1097 PG 45

ALVIN RAY RESPASS
DB 359 PG 802
DB 549 PG 218

MATCHLINE -L- STA. 21+00.00
SEE SHEET U0-3

5/14/99
26-105-202 ut_rdy4_U02_psh.dgn
LISTED TO CHANGE