

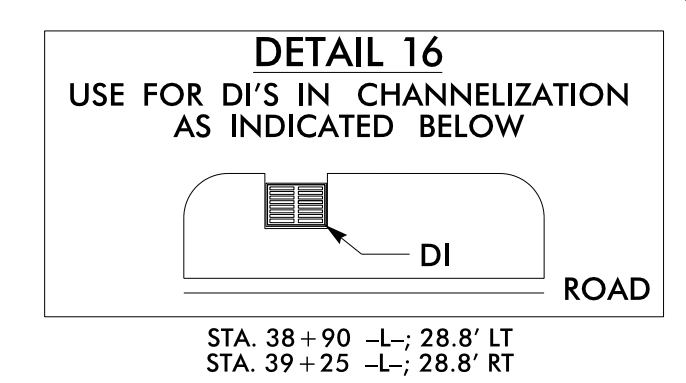
-L- CURVE DATA

PI Sta 33+90.59	PI Sta 38+02.80
$\Delta = 8^{\circ}05'32.4"$ (RT)	$\Delta = 7^{\circ}42'12.7"$ (LT)
D = 2'12'13.3"	D = 1'4'06.6"
L = 367.22'	L = 457.14'
T = 183.91'	T = 228.91'
R = 2,600.00'	R = 3,400.00'
SUPER = 0.05	SUPER = 0.04
RUNOFF = 135'	RUNOFF = 108'

Place Matting for Erosion Control on Slope as Work Allows. Sta. 33+00 to Sta. 35+50 LT and RT

30 x 15 x 3
1.5 inch Skimmer with 0.375 inch Orifice Diameter
4 ft. weir
ID 6.1

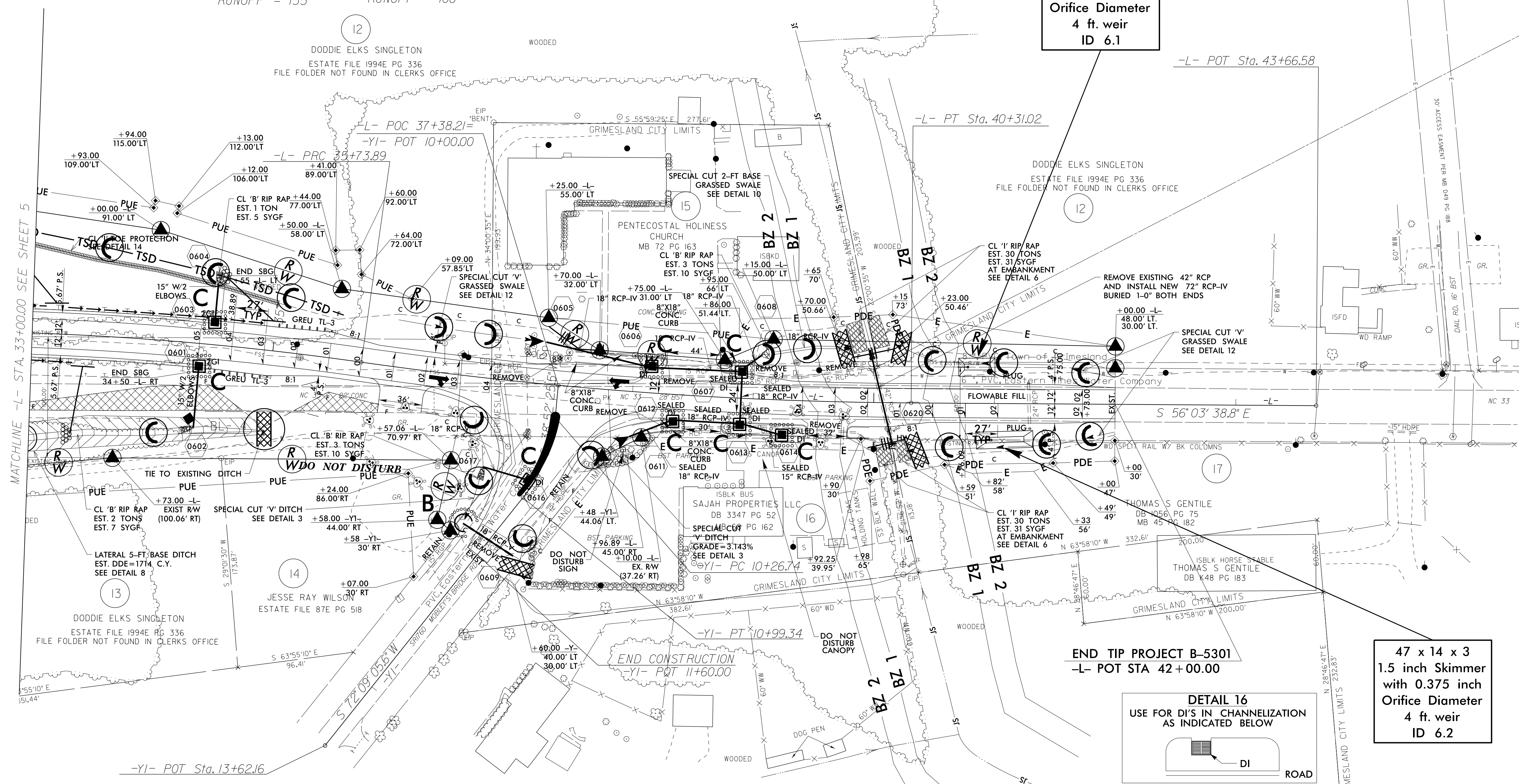
47 x 14 x 3
1.5 inch Skimmer with 0.375 inch Orifice Diameter
4 ft. weir
ID 6.2



8,700	NC 33	-L-	9,300
12,300			13,200
	1050	1,650	
	1400	2300	
	-YI-		
	SR 1760		
ADT 2020	2,700		
ADT 2040	3,700		

NOTE: UTILIZE TEMPORARY SEDIMENT BASIN OR SPECIAL STILLING BASIN(S) AS STILLING BASIN WHERE APPLICABLE.

NOTE: UTILIZE FABRIC INSERT INLET PROTECTION DEVICE AS DIRECTED IN LIEU OF ROCK INLET SEDIMENT TRAP TYPE C TO AVOID IMPOUNDING RUNOFF ON ROADWAYS OPEN TO THE PUBLIC



-YI- CURVE DATA

PI Sta 10+64.10
$\Delta = 33^{\circ}16'40.2"$ (RT)
D = 45'50'11.8"
L = 72.60'
T = 37.36'
R = 125.00'

5" MONLITHIC CONCRETE ISLAND

8/17/99
C:\PROJECTS\B-5301\DRAWINGS\EC-09\CONST.06