

**This electronic collection of documents is provided  
for the convenience of the user  
and is Not a Certified Document –**

**The documents contained herein were originally issued  
and sealed by the individuals whose names and license  
numbers appear on each page, on the dates appearing  
with their signature on that page.**

**This file or an individual page  
shall not be considered a certified document.**

**This electronic collection of documents is provided  
for the convenience of the user  
and is Not a Certified Document –**

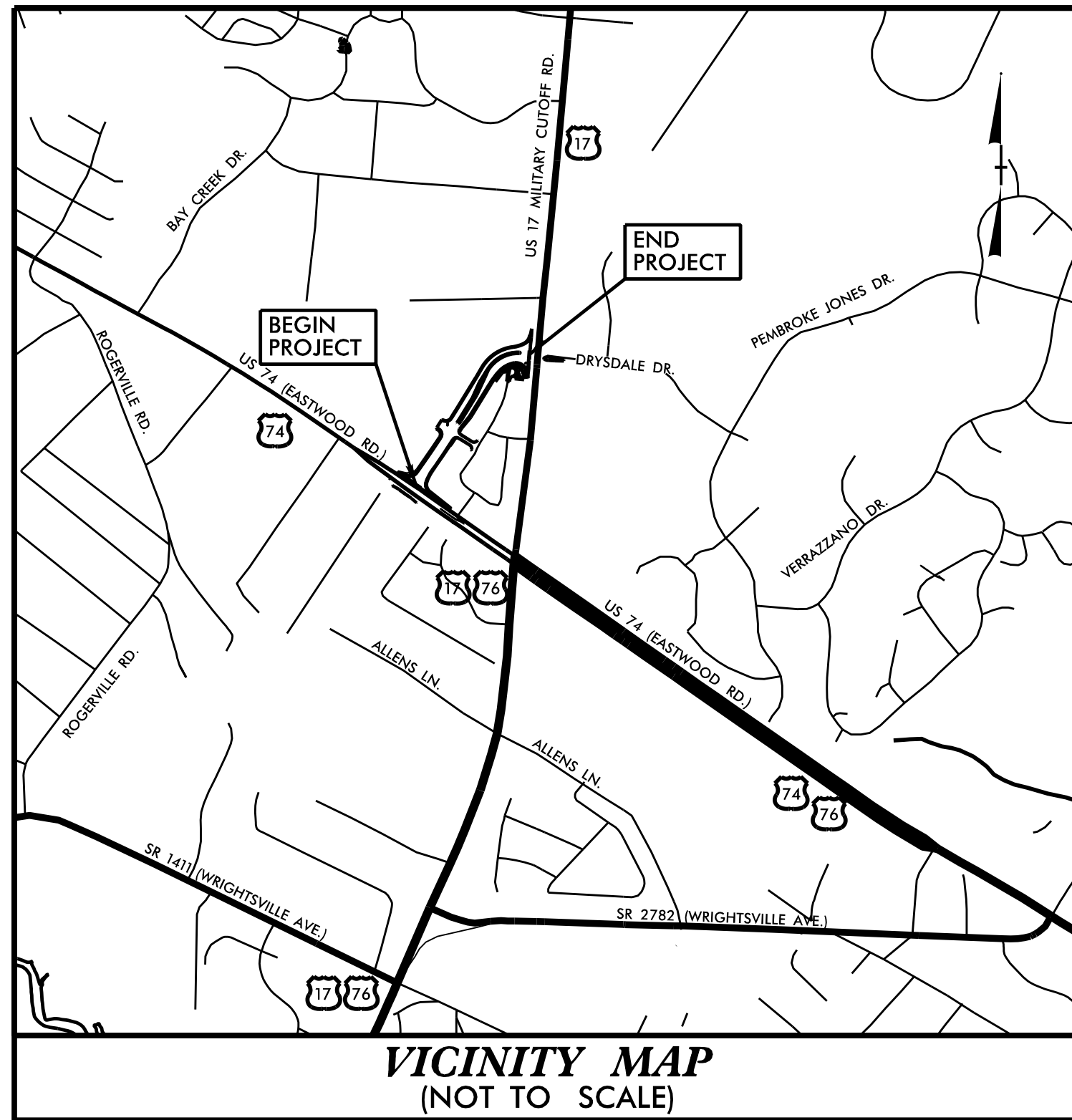
**The documents contained herein were originally issued  
and sealed by the individuals whose names and license  
numbers appear on each page, on the dates appearing  
with their signature on that page.**

**This file or an individual page  
shall not be considered a certified document.**

09, 08, 95

TIP PROJECT: U-5710A

See Sheet 1B For Conventional Symbols



STATE OF NORTH CAROLINA  
DIVISION OF HIGHWAYS

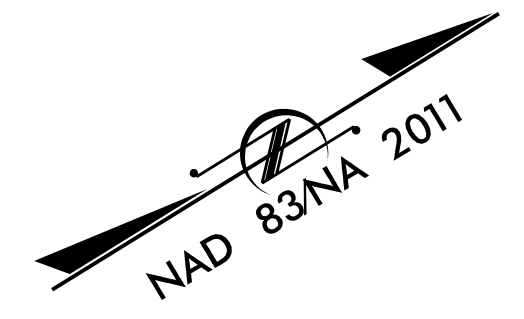
UTILITIES BY OTHERS PLANS  
NEW HANOVER COUNTY

T.I.P. NO.	SHEET NO.
U-5710A	UO-1

NOTE:  
ALL UTILITY WORK SHOWN ON THIS SHEET WILL BE DONE BY OTHERS. NO PAYMENT WILL BE MADE TO THE CONTRACTOR FOR UTILITY WORK SHOWN ON THIS SHEET.

LOCATION: NEW LOCATION NORTHWESTERN QUADRANT CONNECTION BETWEEN US 74 (EASTWOOD RD.) AND US 17 (MILITARY CUTOFF RD.)

TYPE OF WORK: POWER (DISTRIBUTION) GAS (DISTRIBUTION) AND COMMUNICATIONS



BEGIN TIP PROJECT U-5710A  
-L- STA. 10+44.11

BEGIN CONSTRUCTION  
-Y4- STA. 29+78.54

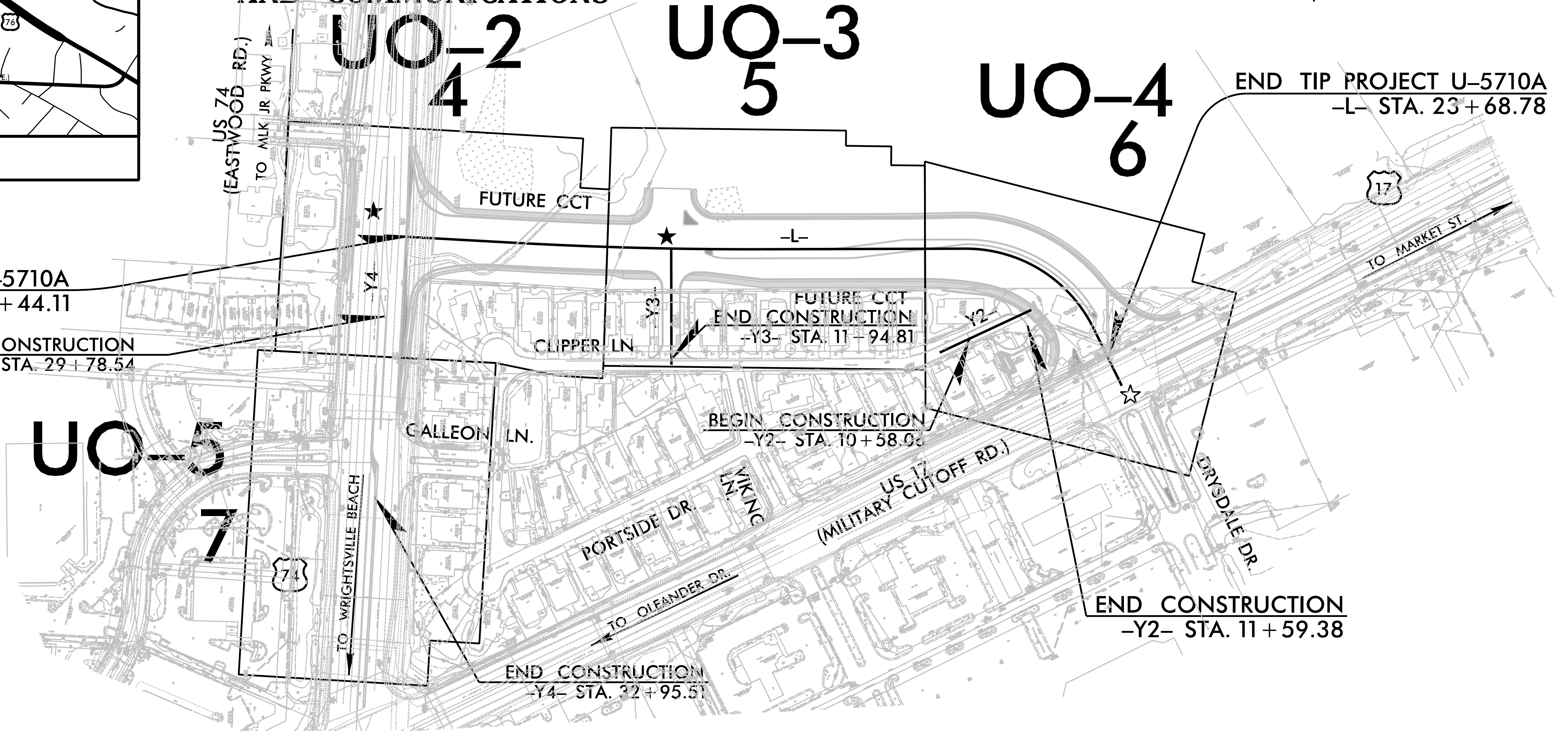
END TIP PROJECT U-5710A  
-L- STA. 23+68.78

UO-5  
7

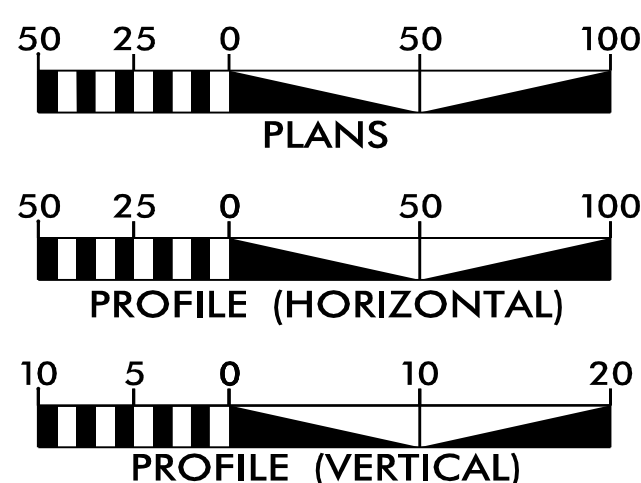
UO-2  
4

UO-3  
5

UO-4  
6



GRAPHIC SCALES



INDEX OF SHEETS

SHEET NO.:	DESCRIPTION:
UO-1	TITLE SHEET
UO-2 THRU UO-5	UBO PLAN SHEETS

UTILITY OWNERS WITH CONFLICTS

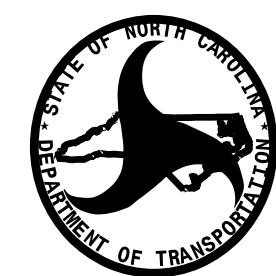
- (A) POWER (DISTRIBUTION) - DUKE
- (B) GAS (DISTRIBUTION) - PNG
- (C) COMMUNICATIONS - AT&T
- (D) COMMUNICATIONS - LEVEL 3
- (E) COMMUNICATIONS - SEGRA
- (F) COMMUNICATIONS - SPECTRUM

PREPARED IN THE OFFICE OF:



2641 Summer Boulevard  
Suite 116  
Raleigh, NC 27616  
(919) 878-7466

Keith Garry UTILITY PROJECT MANAGER  
Scott Williford PROJECT UTILITY COORDINATOR



DIVISION OF HIGHWAYS  
DIVISION 03  
DIV ADDRESS  
5501 Barbados Blvd.  
Castle Hayne, NC 28429

Michael Bass DIVISION CONTACT #1  
Lonny Sleeper DIVISION CONTACT #2

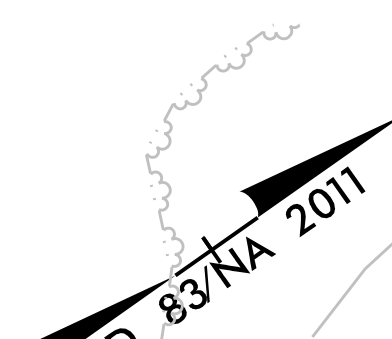
\$\$\$\$\$ SYSTEM \$\$\$\$\$\$  
\$\$\$\$\$ DGN \$\$\$\$\$\$  
\$\$\$\$\$ USERNAME \$\$\$\$\$\$

PROJECT REFERENCE NO.	SHEET NO.
U-5710A	UO-2
THIS SHEET CORRESPONDS TO RDY- 4	

### UTILITIES BY OTHERS

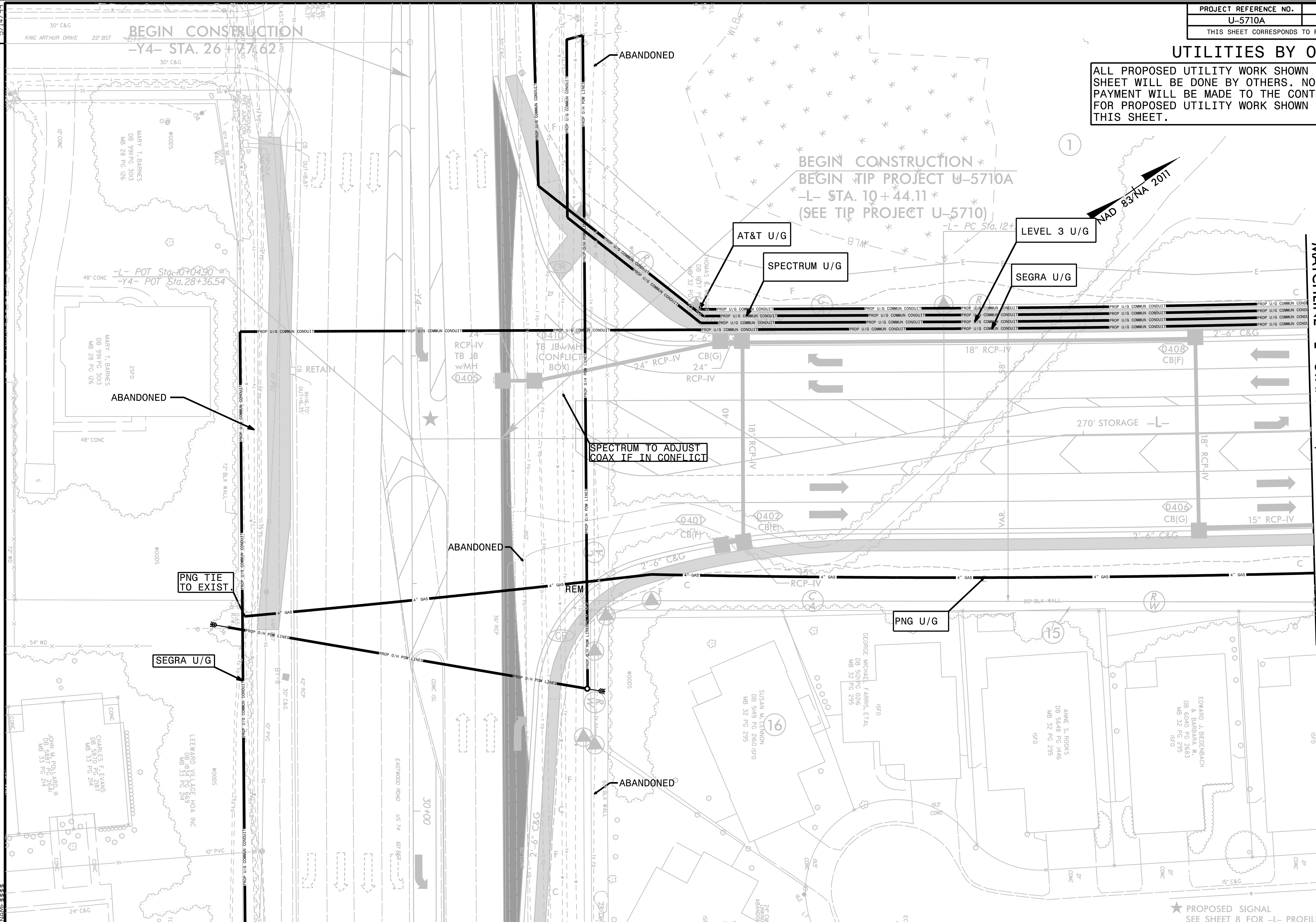
ALL PROPOSED UTILITY WORK SHOWN ON THIS SHEET WILL BE DONE BY OTHERS. NO PAYMENT WILL BE MADE TO THE CONTRACTOR FOR PROPOSED UTILITY WORK SHOWN ON THIS SHEET.

BEGIN CONSTRUCTION \*  
 BEGIN TIP PROJECT U-5710A  
 -L- STA. 10+44.11 \*  
 (SEE TIP PROJECT U-5710)



MATCHLINE -L- STA. 14+00, SEE SHEET UO-3

MATCHLINE -Y4- STA. 30+50, SEE SHEET UO-5



PLOT DRIVER: \$PLTDRV\$\$  
 USER: \$USER\$\$  
 FILE: \$PWVARVAULTPATHDESC\$

DATE: \$DATE\$

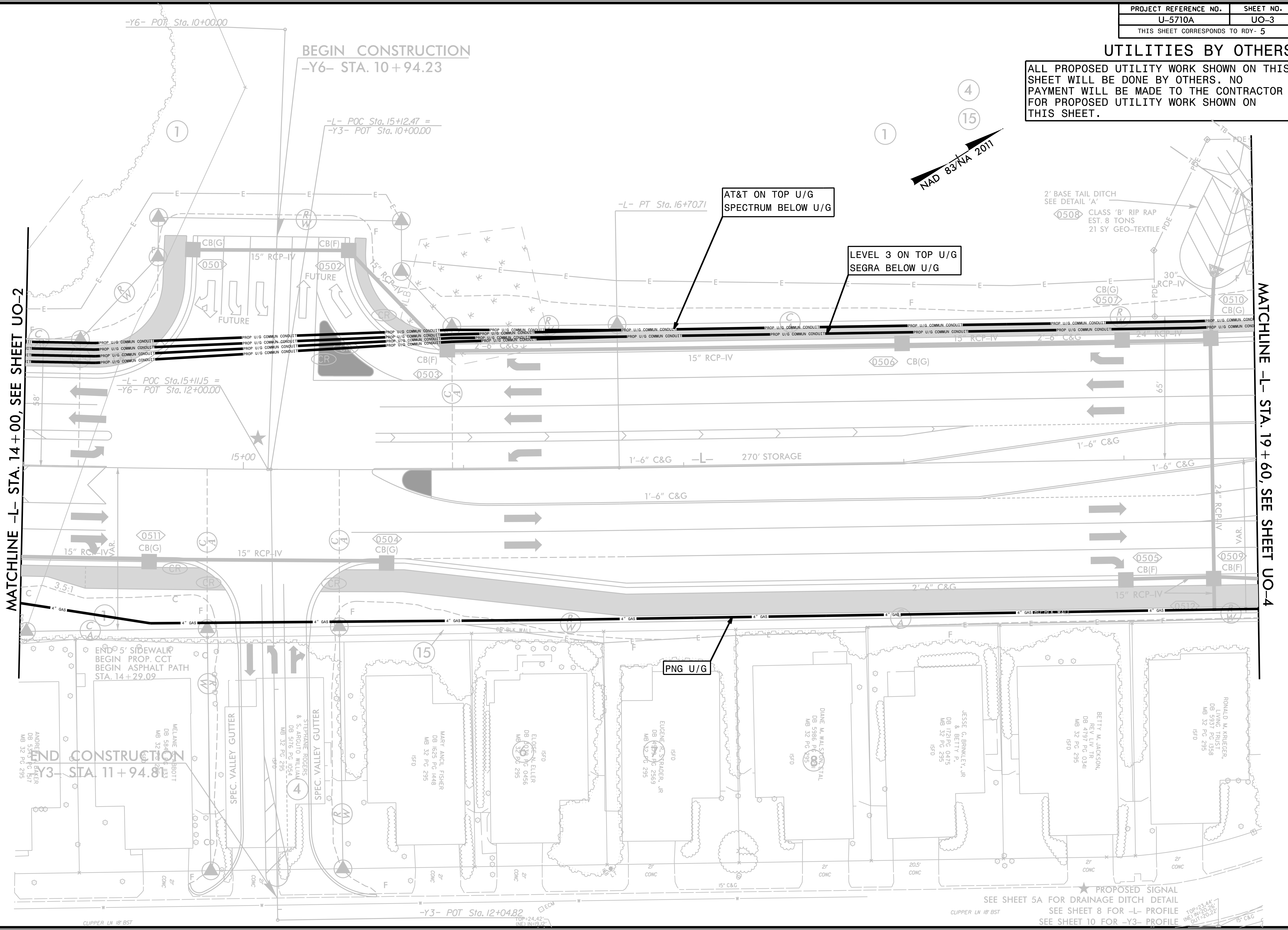
PENTABLE: \$PENTBL\$  
 TIME: \$TIME\$

REVISIONS

★ PROPOSED SIGNAL  
 SEE SHEET 8 FOR -L- PROFILE

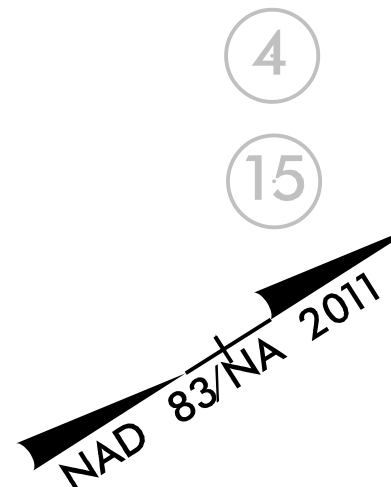
### UTILITIES BY OTHERS

ALL PROPOSED UTILITY WORK SHOWN ON THIS SHEET WILL BE DONE BY OTHERS. NO PAYMENT WILL BE MADE TO THE CONTRACTOR FOR PROPOSED UTILITY WORK SHOWN ON THIS SHEET.



MATCHLINE -L- STA. 14 + 00, SEE SHEET UO-2

MATCHLINE -L- STA. 19 + 60, SEE SHEET UO-4



**BEGIN CONSTRUCTION**  
-Y6- STA. 10 + 94.23

-Y6- POT Sta. 10+00.00

-L- POC Sta. 15+12.47 =  
-Y3- POT Sta. 10+00.00

-L- PT Sta. 16+70.71

-L- POC Sta. 15+11.15 =  
-Y6- POT Sta. 12+00.00

**END CONSTRUCTION**  
-Y3- STA. 11 + 94.6

-Y3- POT Sta. 12+04.82

PNG U/G

AT&T ON TOP U/G  
SPECTRUM BELOW U/G

LEVEL 3 ON TOP U/G  
SEGRA BELOW U/G

2' BASE TAIL DITCH  
SEE DETAIL 'A'  
0508 CLASS 'B' RIP RAP  
EST. 8 TONS  
21 SY GEO-TEXTILE

★ PROPOSED SIGNAL  
SEE SHEET 5A FOR DRAINAGE DITCH DETAIL  
SEE SHEET 8 FOR -L- PROFILE  
SEE SHEET 10 FOR -Y3- PROFILE

TOP=24.44'  
IN=10.26'  
OUT=20.22'

END 5' SIDEWALK  
BEGIN PROP. CCT  
BEGIN ASPHALT PATH  
STA. 14 + 29.09

SPEC. VALLEY GUTTER

SPEC. VALLEY GUTTER

ANDREW L. BAKER  
DB 5377 PG 295  
MB 32 PG 295

MELANIE M. ROBERTT  
DB 5846 PG 1448  
MB 32 PG 295

STEPHANIE ROGERS  
& S. ARGENTO WILLIAM  
DB 5176 PG 1054  
MB 32 PG 295

MARY ANNE FISHER  
DB 1625 PG 1448  
MB 32 PG 295

ELOISE N. ELLER  
DB 6029 PG 0466  
MB 32 PG 295

EUGENE N. SYRADER, JR  
DB 1329 PG 2569  
MB 32 PG 295

DIANE M. WALSH, DON KVAL  
DB 5986 PG 0011  
MB 32 PG 295

JESSE G. BRINKLEY, JR  
& BETTY B.  
DB 1721 PG 0475  
MB 32 PG 295

BETTY M. JACKSON,  
REV LIV TR  
DB 4797 PG 0341  
MB 32 PG 295

RONALD M. KRIEGER,  
LIV TR  
DB 5337 PG 1358  
MB 32 PG 295

CLIPPER LN 18' BST

CLIPPER LN 18' BST

CLIPPER LN 18' BST

CLIPPER LN 18' BST

CLIPPER LN 18' BST

CLIPPER LN 18' BST

CLIPPER LN 18' BST

CLIPPER LN 18' BST

CLIPPER LN 18' BST

CLIPPER LN 18' BST

CLIPPER LN 18' BST

CLIPPER LN 18' BST

CLIPPER LN 18' BST

CLIPPER LN 18' BST

CLIPPER LN 18' BST

CLIPPER LN 18' BST

CLIPPER LN 18' BST

CLIPPER LN 18' BST

CLIPPER LN 18' BST

CLIPPER LN 18' BST

CLIPPER LN 18' BST

CLIPPER LN 18' BST

CLIPPER LN 18' BST

CLIPPER LN 18' BST

CLIPPER LN 18' BST

CLIPPER LN 18' BST

CLIPPER LN 18' BST

CLIPPER LN 18' BST

CLIPPER LN 18' BST

CLIPPER LN 18' BST

CLIPPER LN 18' BST

CLIPPER LN 18' BST

CLIPPER LN 18' BST

CLIPPER LN 18' BST

CLIPPER LN 18' BST

CLIPPER LN 18' BST

CLIPPER LN 18' BST

CLIPPER LN 18' BST

CLIPPER LN 18' BST

CLIPPER LN 18' BST

CLIPPER LN 18' BST

CLIPPER LN 18' BST

CLIPPER LN 18' BST



