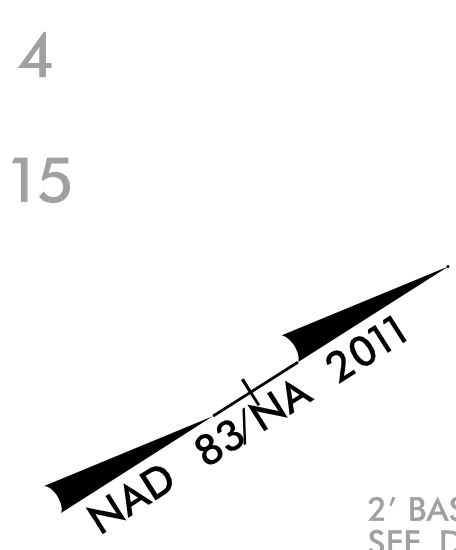
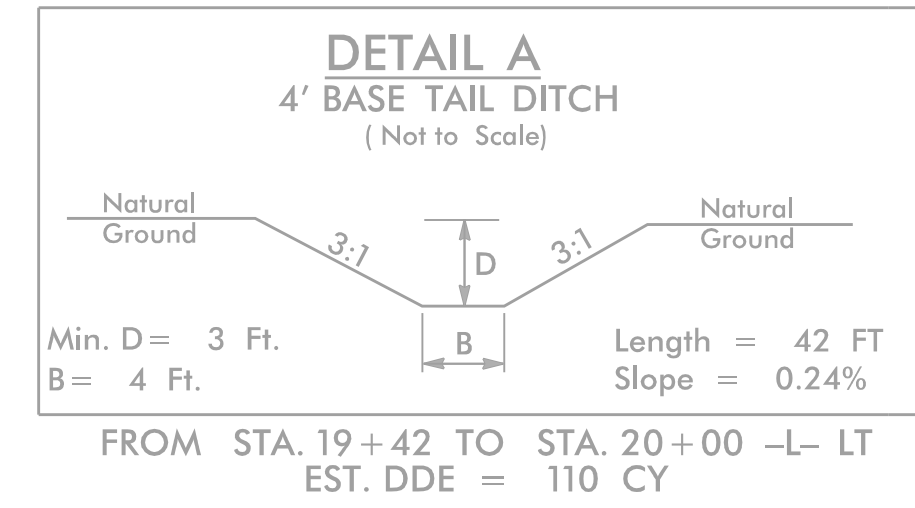
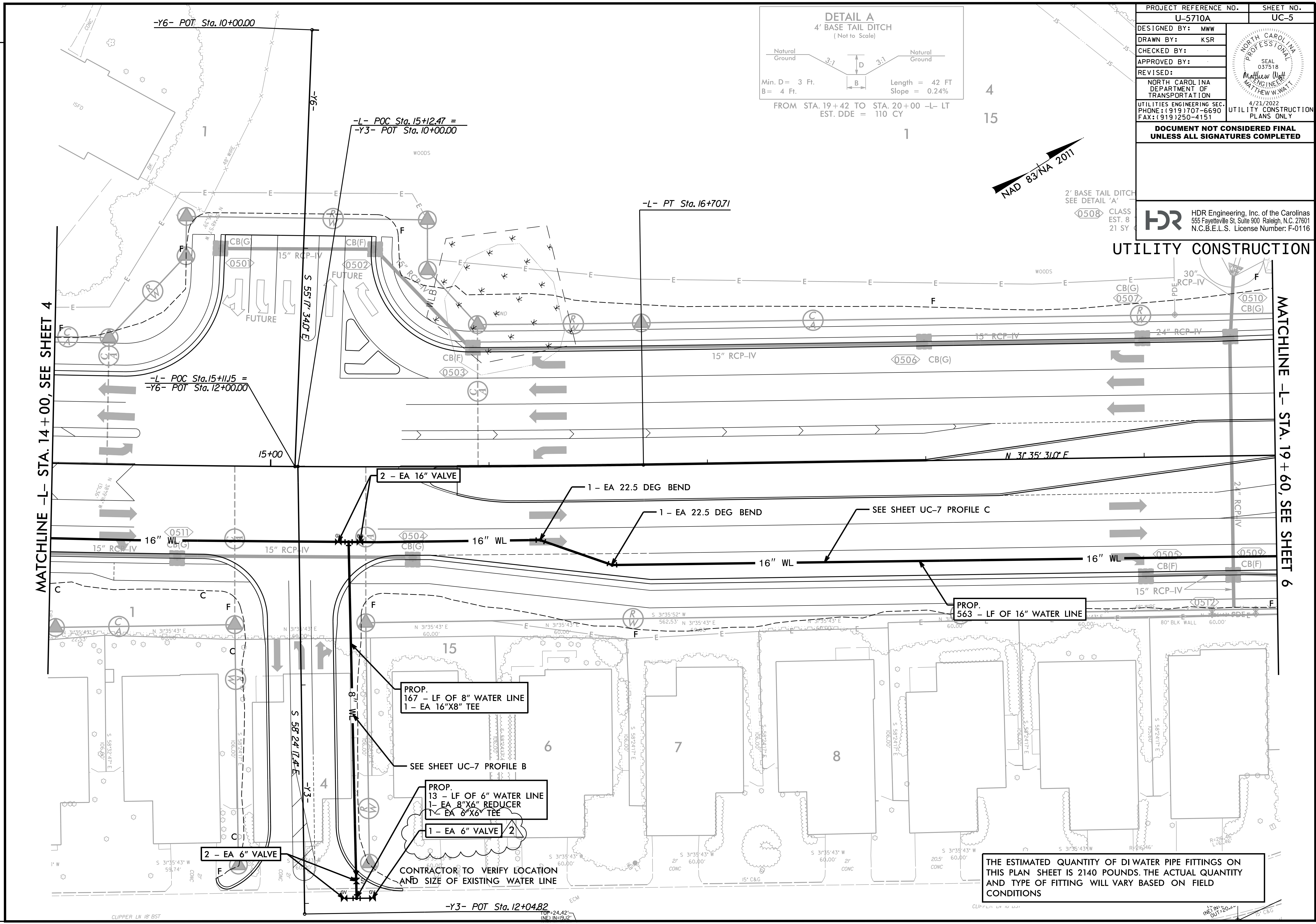


| | |
|------------------------------------------------------------------|---------------------------------------------------------------------------------------------------------------------------------|
| PROJECT REFERENCE NO. | SHEET NO. |
| U-5710A | UC-5 |
| DESIGNED BY: MWW | |
| DRAWN BY: KSR | |
| CHECKED BY: | |
| APPROVED BY: | |
| REVISED BY: | NORTH CAROLINA DEPARTMENT OF TRANSPORTATION UTILITIES ENGINEERING SEC. PHONE: (919) 707-6690 FAX: (919) 250-4151 |
| DOCUMENT NOT CONSIDERED FINAL UNLESS ALL SIGNATURES COMPLETED | |



HDR HDR Engineering, Inc. of the Carolinas
 555 Fayetteville St, Suite 900 Raleigh, N.C. 27601
 N.C.B.E.L.S. License Number: F-0116

UTILITY CONSTRUCTION



2 UPDATED QUANTITY TO 1 6\"/>

REVISIONS

DGN NAME: ... \UC\Proj\U5710A_UTL_PSH05.dgn
 PLOT DRIVER: NCDOT...pdf_color_eng_50.plt
 USER: VIMOORE DATE: 4/19/2022 TIME: 11:22:41 AM
 FILE: \

THE ESTIMATED QUANTITY OF DI WATER PIPE FITTINGS ON THIS PLAN SHEET IS 2140 POUNDS. THE ACTUAL QUANTITY AND TYPE OF FITTING WILL VARY BASED ON FIELD CONDITIONS

CONTRACTOR TO VERIFY LOCATION AND SIZE OF EXISTING WATER LINE

PROP. 167 - LF OF 8\"/>

PROP. 13 - LF OF 6\"/>

2 - EA 6\"/>

2 - EA 16\"/>

PROP. 563 - LF OF 16\"/>

TOP=24.42' INF=19.12'

CLIPPER LN 18' BST

CLIPPER LN 18' BST

INF=20.42' OUT=20.42'