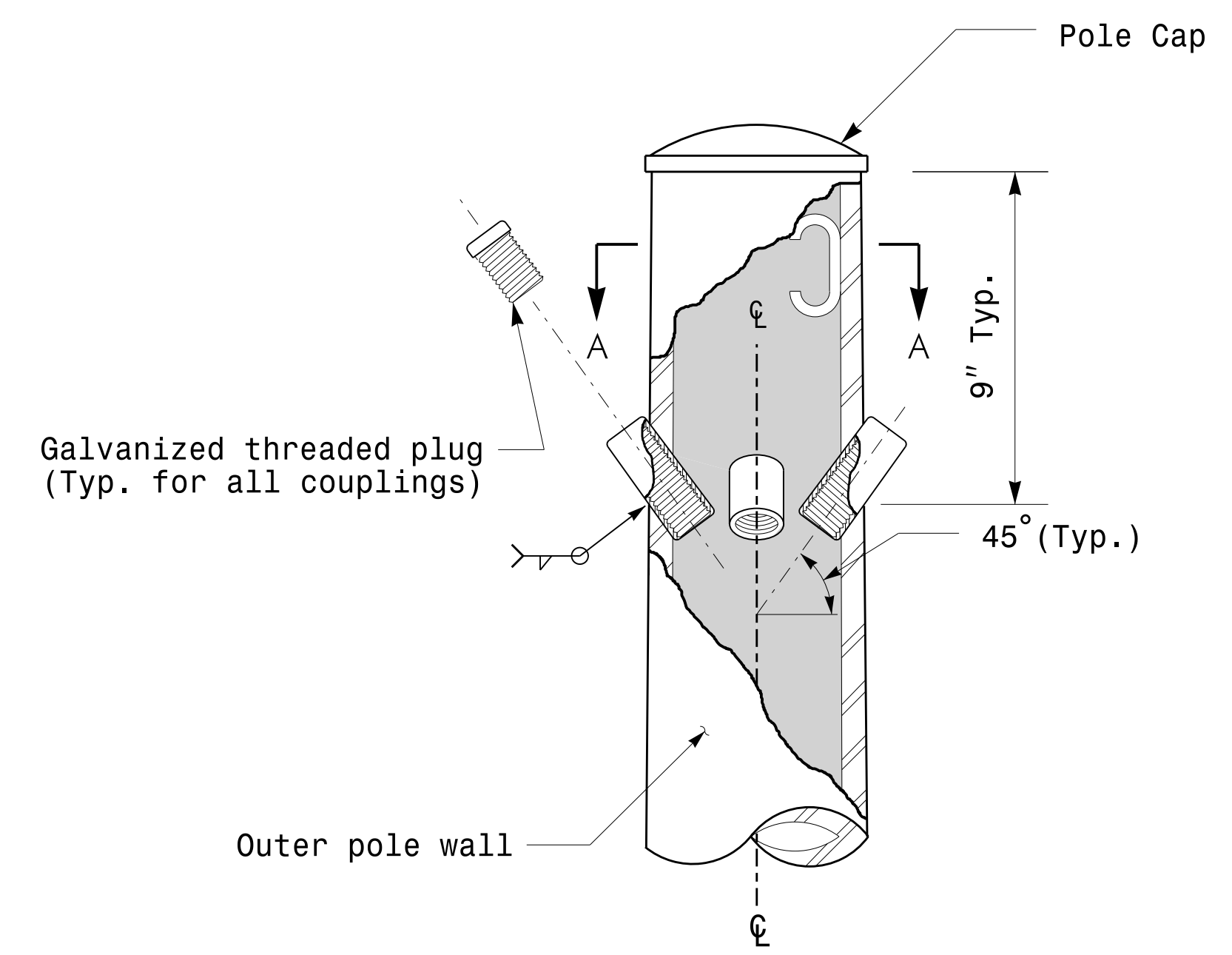
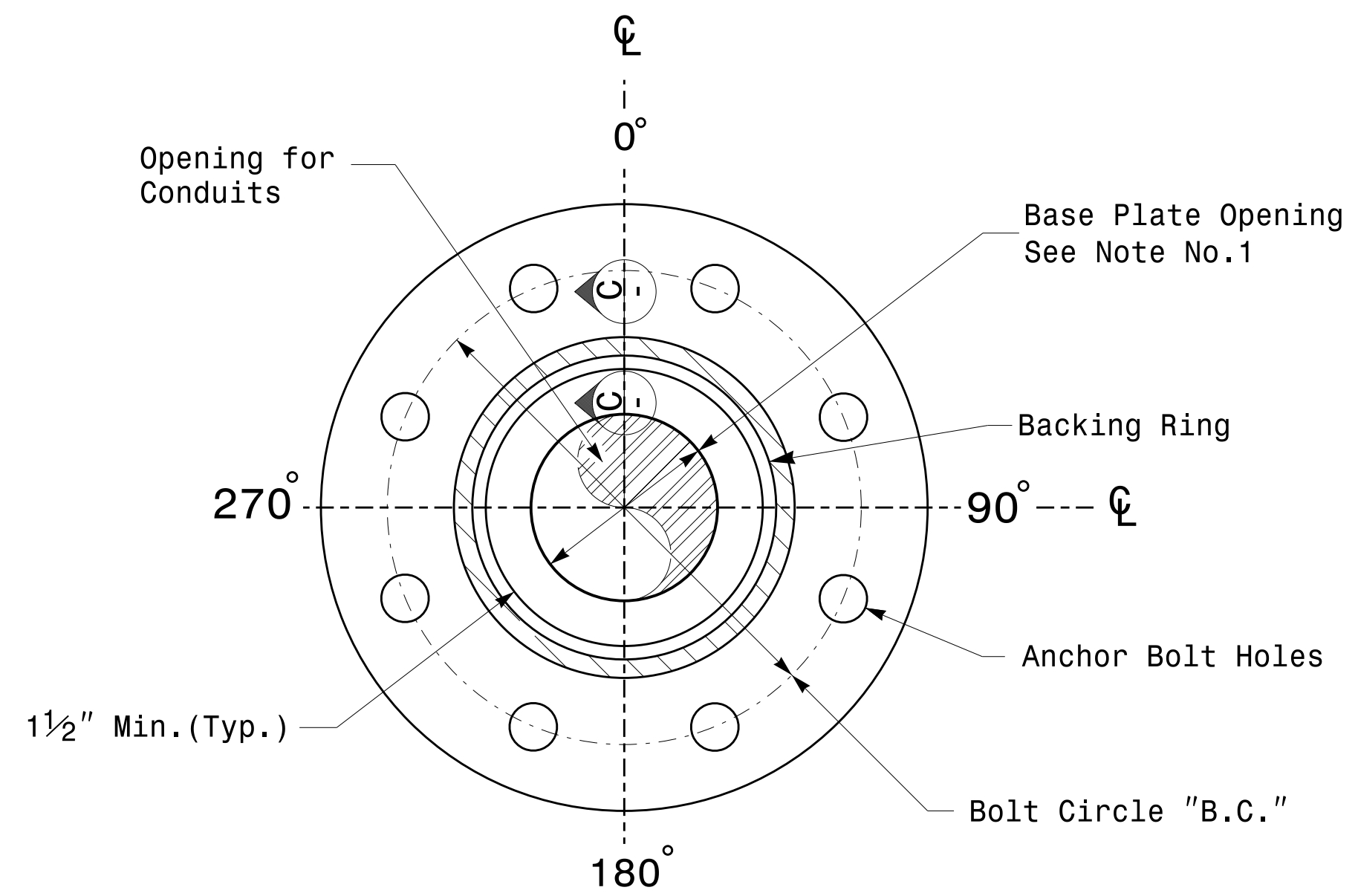


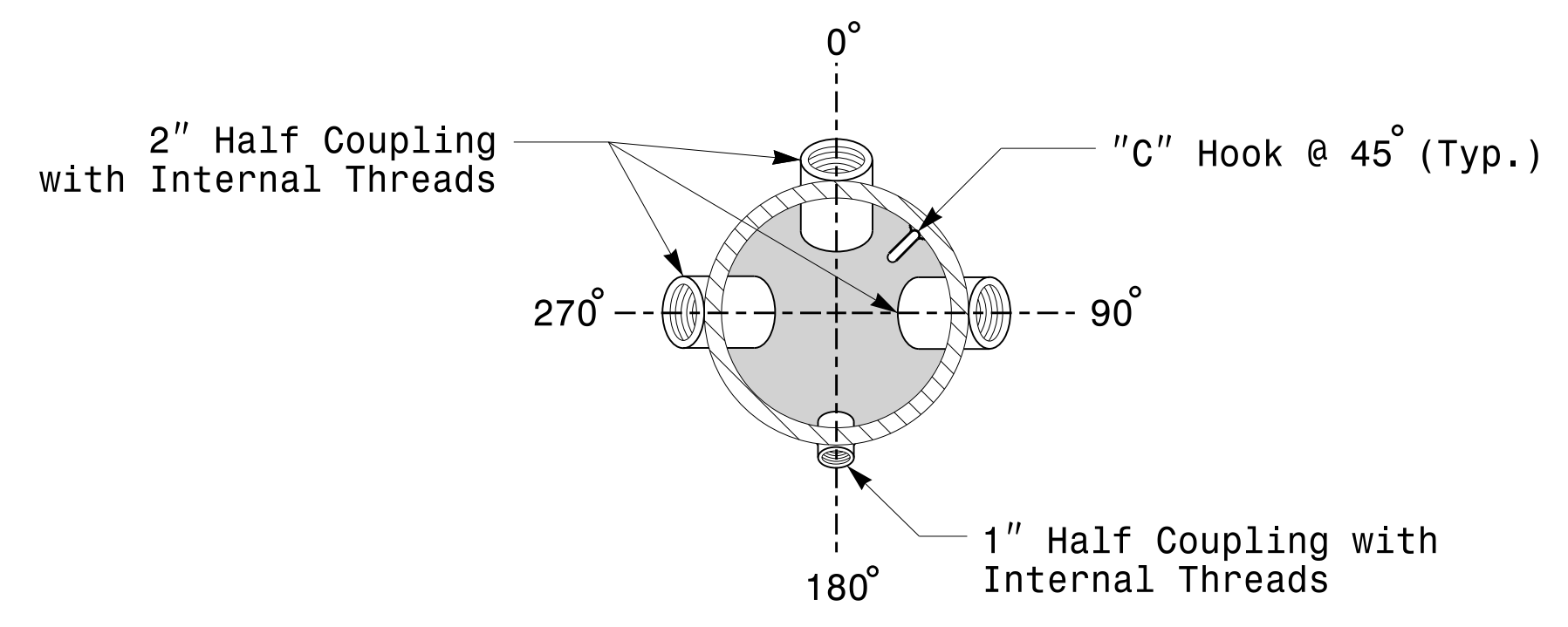
Note:
 1. Opening in pole base plate shall be equal to pole base inside diameter minus 3 1/2" but shall not be less than 8 1/2".



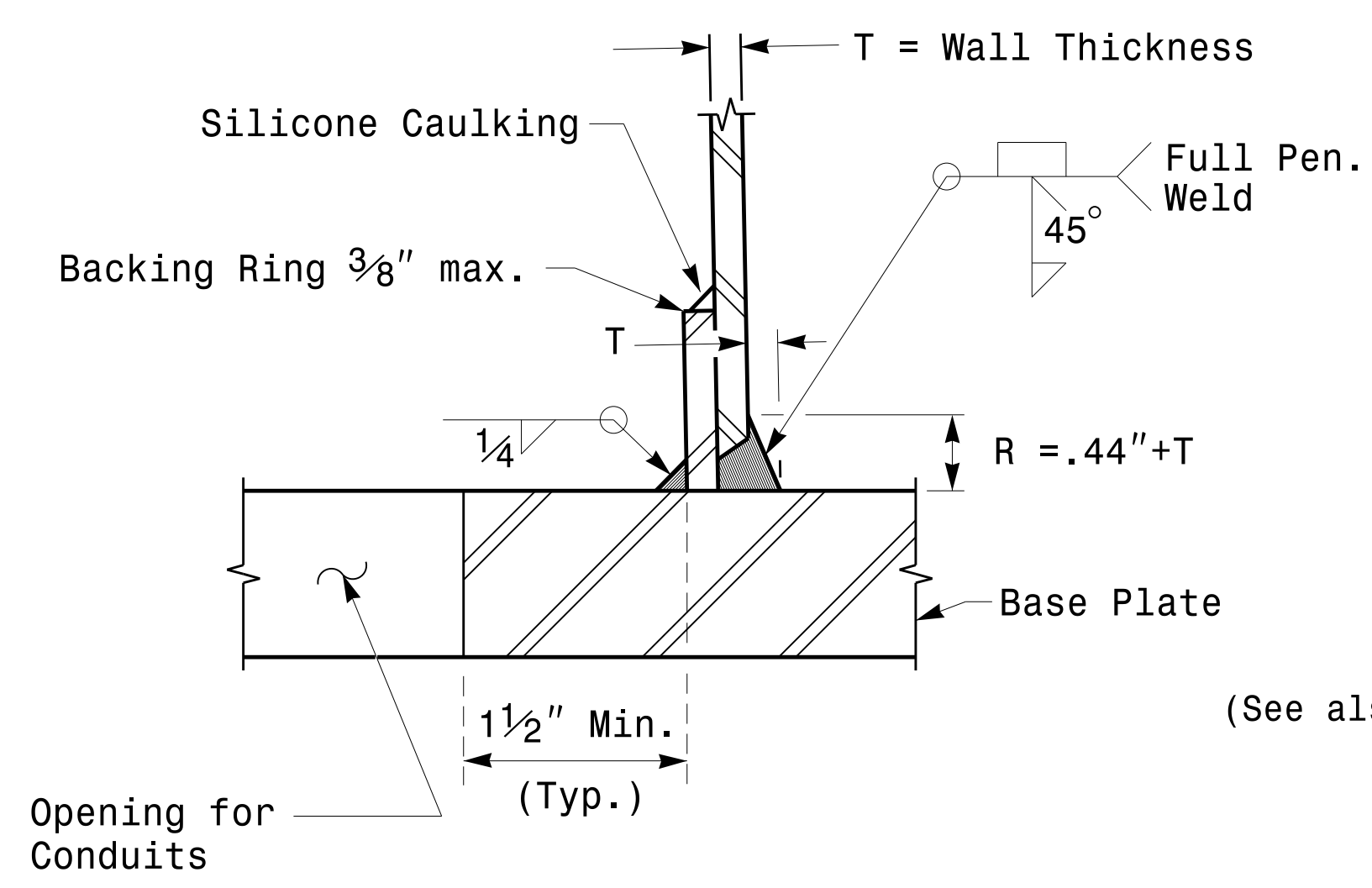
Cable Entrances at Top of Pole



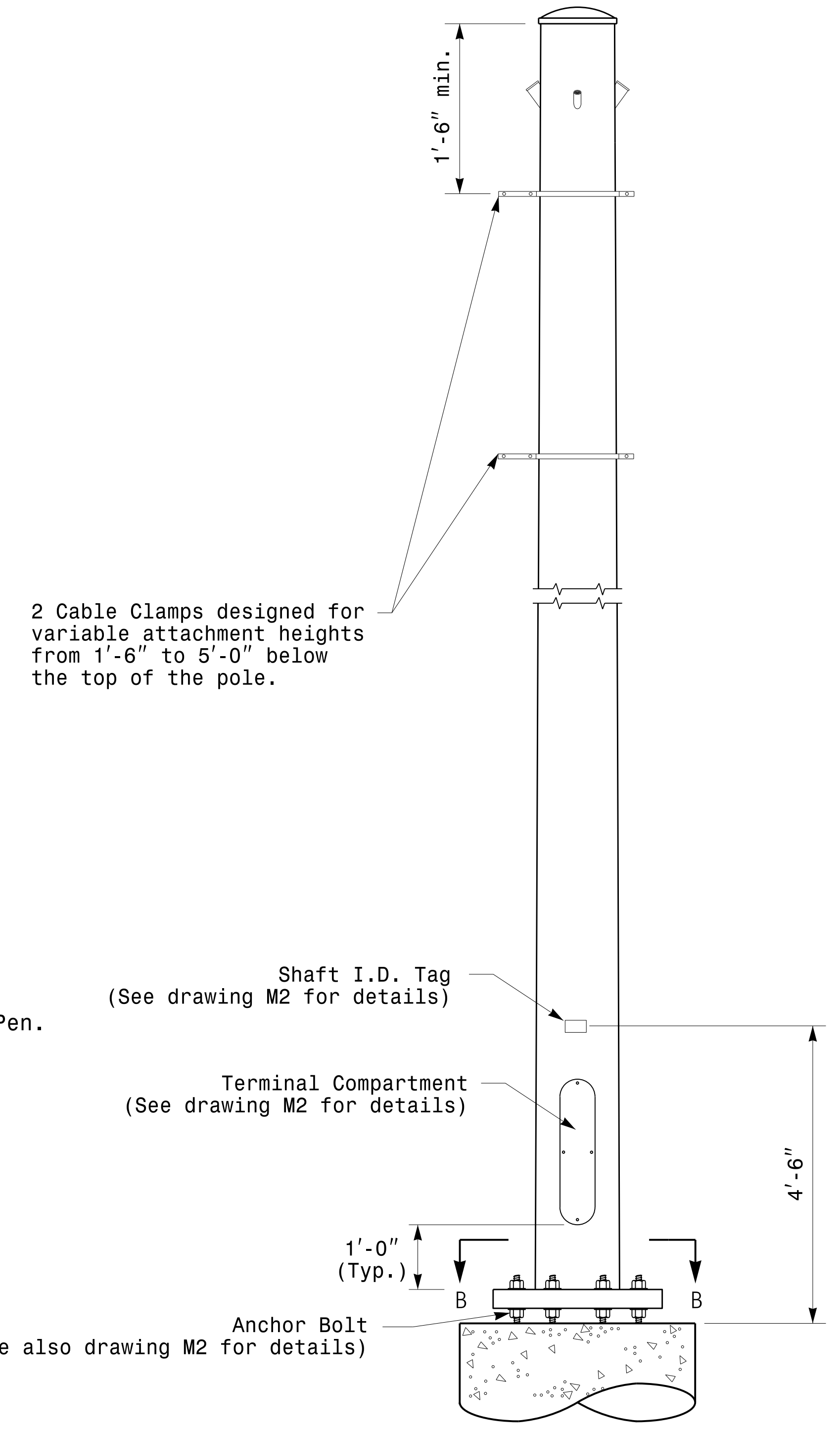
Section B-B
Pole Base Plate Details
(8 and 12 Bolt Pattern)



Section A-A
Radial Orientation for Factory Installed
Accessories at Top of Pole



Section C-C
(Pole Attachment to Base Plate)
Full-Penetration
Groove Weld Detail



Monotube Strain Pole

	Typical Fabrication Details For Strain Poles		SEAL
	PLAN DATE: OCTOBER 2017 PREPARED BY: N. BITTING	DESIGNED BY: K.C. DURIGON REVIEWED BY: D.C. SARKAR	
SCALE: 0 NA NONE	DocuSigned by: Debesh C. Sarkar 4488E78169A4F49E		10/11/2017 DATE

11-0CT-2017 08:25
 136504115 Signal.svk:gncl Design Section\Facsim Region\MT Sheets\2016\2014 Sig.M3 Std. Fabrication Details-Strain Poles.dgn
 P1:1/2/2017

Fabrication Details – Strain Poles