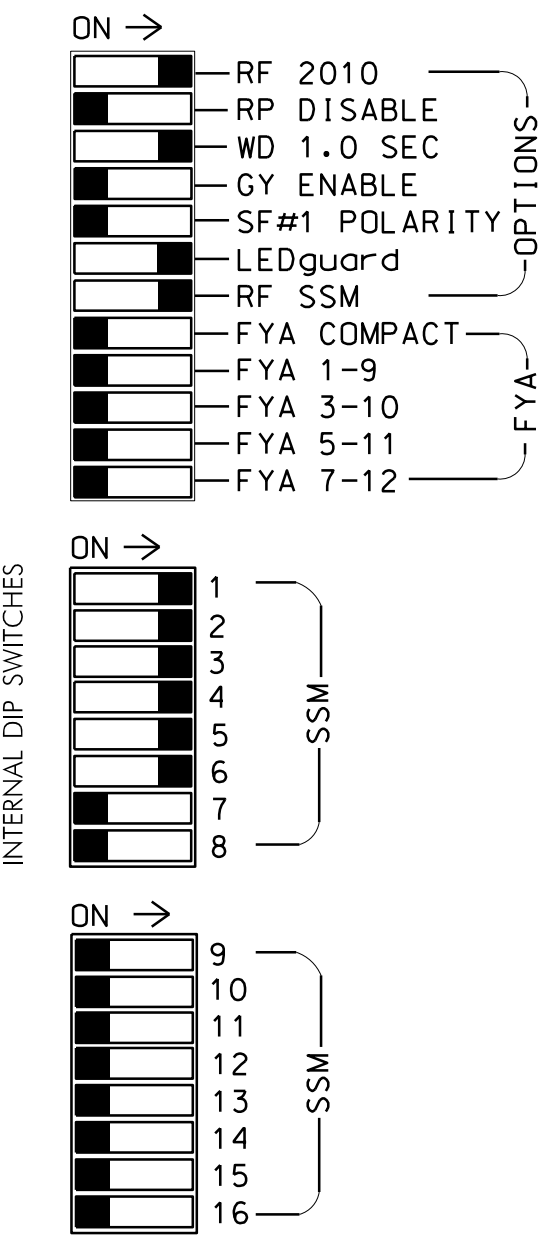
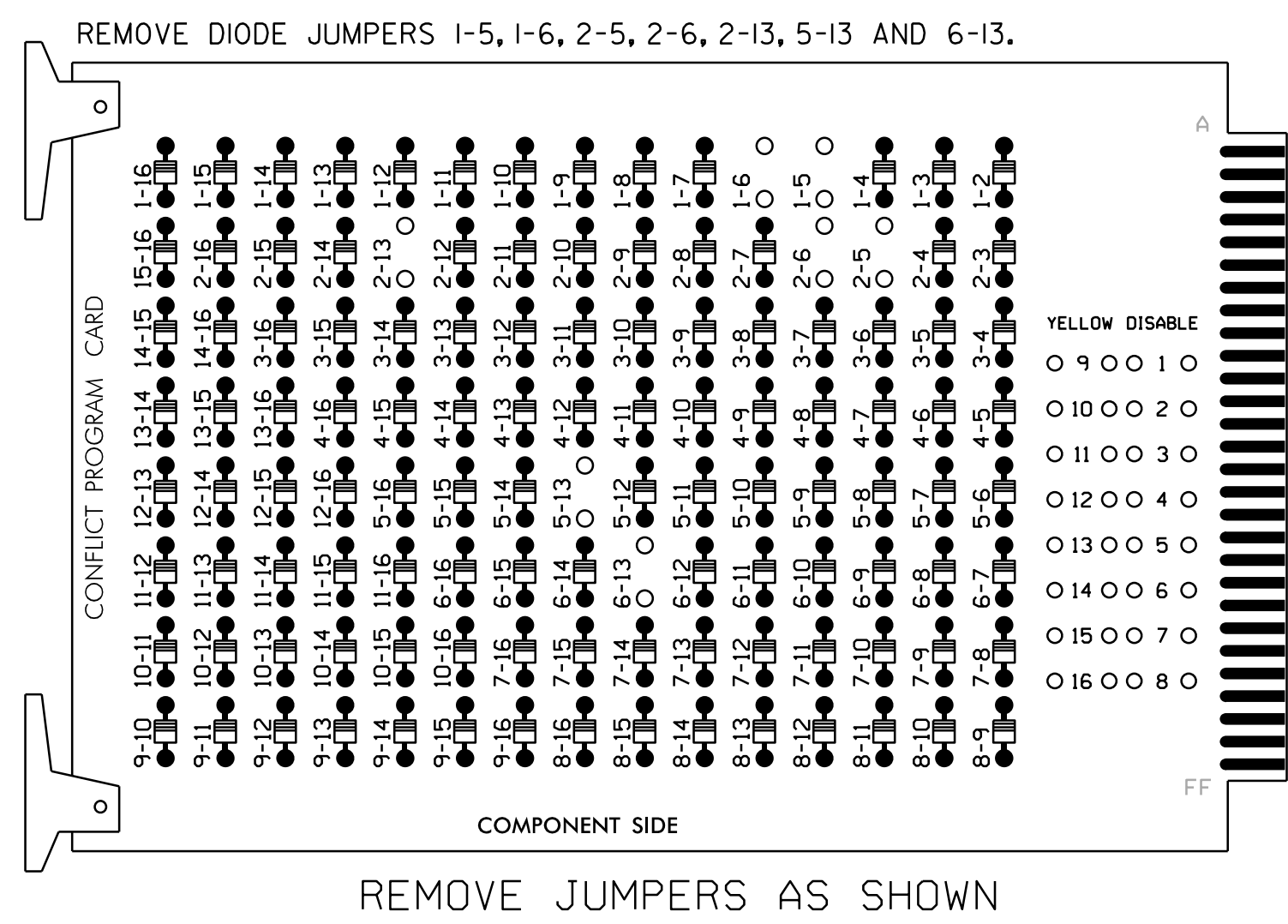
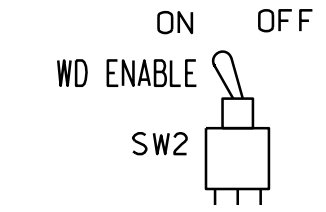


EDI MODEL 2010ECL-NC CONFLICT MONITOR PROGRAMMING DETAIL

(remove jumpers and set switches as shown)



NOTES:

- Card is provided with all diode jumpers in place. Removal of any jumper allows its channels to run concurrently.
- Make sure jumpers SEL2-SEL5 are present on the monitor board.

■ = DENOTES POSITION OF SWITCH

NOTES

- To prevent "flash-conflict" problems, insert red flash program blocks for all unused vehicle load switches in the output file. The installer shall verify that signal heads flash in accordance with the Signal Plans.
- Ensure that red enable is active at all times during normal operation. To prevent red failures on unused monitor channels, tie unused red monitor unputs 7,8,9,10,11,12,13,14,15 & 16 to load switch AC+ per cabinet manufacturer's instructions.
- Enable Simultaneous Gap-Out for all Phases.
- Program phases 2 and 6 for Variable Initial and Gap Reduction.
- Program phases 2 and 6 for Startup In Green.
- Program phase 2 for Startup Ped Call.
- Program phases 2 and 6 for Yellow Flash.
- The cabinet and controller are part of the Wilmington Signal System.

EQUIPMENT INFORMATION

CONTROLLER.....2070
 CABINET332
 SOFTWAREECONOLITE OASIS
 CABINET MOUNT.....BASE
 OUTPUT FILE POSITIONS...12
 LOAD SWITCHES USED.....S1,S2,S2P,S3,S4,S5,S6
 PHASES USED.....1,2,2PED,3,4,5,6
 OVERLAPS.....NONE

SIGNAL HEAD HOOK-UP CHART

LOAD SWITCH NO.	S1	S2	S2P	S3	S4	S4P	S5	S6	S6P	S7	S8	S8P
PHASE	1	2	2 PED	3	4	4 PED	5	6	6 PED	7	8	8 PED
SIGNAL HEAD NO.	11	32	21,22,23	31	32	41	42	51,52	61,62,63	71	81	82
RED		128		116	116	101	101		134			
YELLOW		129		117	117	102	102		135			
GREEN		130		118	118	103	103		136			
RED ARROW	125								131			
YELLOW ARROW	126	126						132	132			
GREEN ARROW	127	127		118		103		133	133			
Hand icon				113								
Walking person icon				115								

NU = NOT USED

COUNTDOWN PEDESTRIAN SIGNAL OPERATION

Countdown Ped Signals are required to display timing only during Ped Clearance Interval. Consult Ped Signal Module user's manual for instructions on selecting this feature.

INPUT FILE POSITION LAYOUT

(front view)

FILE "I"	1	2	3	4	5	6	7	8	9	10	11	12	13	14
U	∅ 1	∅ 1	∅ 2	∅ 3	∅ 4	∅ 3	∅ 3	∅ 3	∅ 3	∅ 3	∅ 3	∅ 3	∅ 3	∅ 3
L	1A	1B	2B	3A	4A	3B	3B	3B	3B	3B	3B	3B	3B	3B
U	NOT USED	∅ 2	∅ 2	NOT USED	∅ 4	NOT USED	NOT USED	NOT USED	NOT USED	NOT USED	NOT USED	NOT USED	NOT USED	NOT USED
L	2A	2C	2C	4B	4B	NOT USED	NOT USED	NOT USED	NOT USED	NOT USED	NOT USED	NOT USED	NOT USED	NOT USED
U	∅ 5	∅ 5	∅ 6	∅ 6	∅ 6	∅ 6	∅ 6	∅ 6	∅ 6	∅ 6	∅ 6	∅ 6	∅ 6	∅ 6
L	5A	5B	6A	6C	6C	6C	6C	6C	6C	6C	6C	6C	6C	6C
U	NOT USED	∅ 5	∅ 6	NOT USED	NOT USED	NOT USED	NOT USED	NOT USED	NOT USED	NOT USED	NOT USED	NOT USED	NOT USED	NOT USED
L	5C	6B	6B	NOT USED	NOT USED	NOT USED	NOT USED	NOT USED	NOT USED	NOT USED	NOT USED	NOT USED	NOT USED	NOT USED

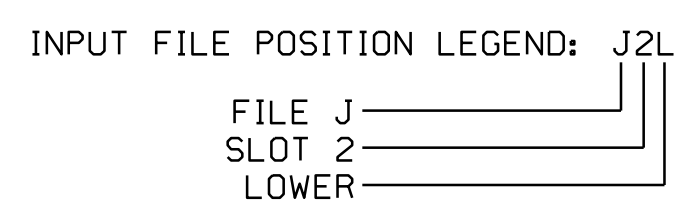
EX.: 1A, 2A, ETC. = LOOP NO.'S

FS = FLASH SENSE
 ST = STOP TIME

INPUT FILE CONNECTION & PROGRAMMING CHART

LOOP NO.	LOOP TERMINAL	INPUT FILE POS.	PIN NO.	INPUT ASSIGNMENT NO.	DETECTOR NO.	NEMA PHASE	CALL	EXTEND	FULL TIME DELAY	STRETCH TIME	DELAY TIME
1A	TB2-1,2	I1U	56	18	1	1	Y	Y			
1B	TB2-5,6	I2U	39	1	2	1	Y	Y			15
2A	TB2-7,8	I2L	43	5	12	2	Y	Y			
2B	TB2-9,10	I3U	63	25	32	2	Y	Y			
2C	TB2-11,12	I3L	76	38	42	2	Y	Y			
3A	TB4-5,6	I5U	58	20	3	3	Y				3
3B	TB6-5,6	I8U	49	11	24	3	Y				
4A	TB4-9,10	I6U	41	3	4	4	Y	Y			
4B	TB4-11,12	I6L	45	7	14	4	Y	Y			
5A	TB3-1,2	J1U	55	17	5	5	Y	Y			
5B	TB3-5,6	J2U	40	2	6	5	Y	Y			
5C	TB3-7,8	J2L	44	6	16	5	Y	Y			15
6A	TB3-9,10	J3U	64	26	36	6	Y	Y			
6B	TB3-11,12	J3L	77	39	46	6	Y	Y			
6C	TB5-1,2	J4U	48	10	26	6	Y	Y			
PED PUSH BUTTONS											
P21,P22	TB8-4,6	I12U	67	29	PED 2	2 PED					

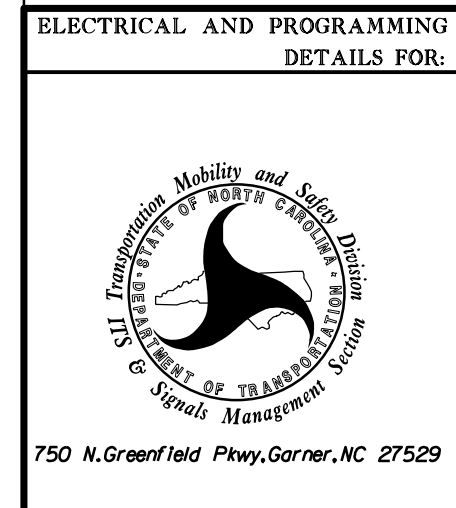
NOTE:
 INSTALL DC ISOLATOR IN INPUT FILE SLOT 112.



THIS ELECTRICAL DETAIL IS FOR THE SIGNAL DESIGN: 03-0895
 DESIGNED: Nov 2021
 SEALED: 11/08/2021
 REVISED: N/A



Electrical Detail



ELECTRICAL AND PROGRAMMING DETAILS FOR:

US 17 (Military Cutoff Road)
 at
**Forum Shopping Center/
 Parker Farm Drive**
 Division 3 New Hanover County Wilmington

PLAN DATE: November 2021 REVIEWED BY: WJ Hamilton
 PREPARED BY: A Andrews RKA PROJ. NO: 19258 (040)

REVISIONS	INIT.	DATE

DOCUMENT NOT CONSIDERED FINAL UNLESS ALL SIGNATURES COMPLETED

Seal area with signature line and date: 11/08/2021