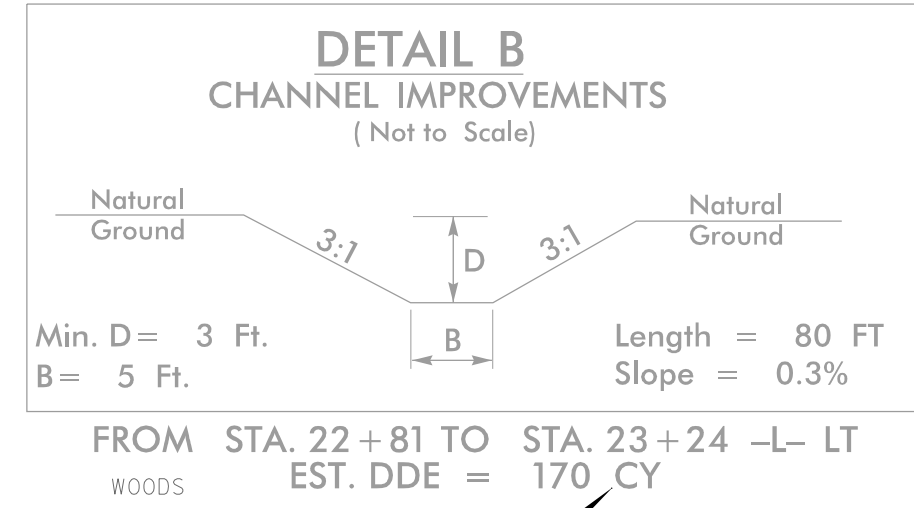


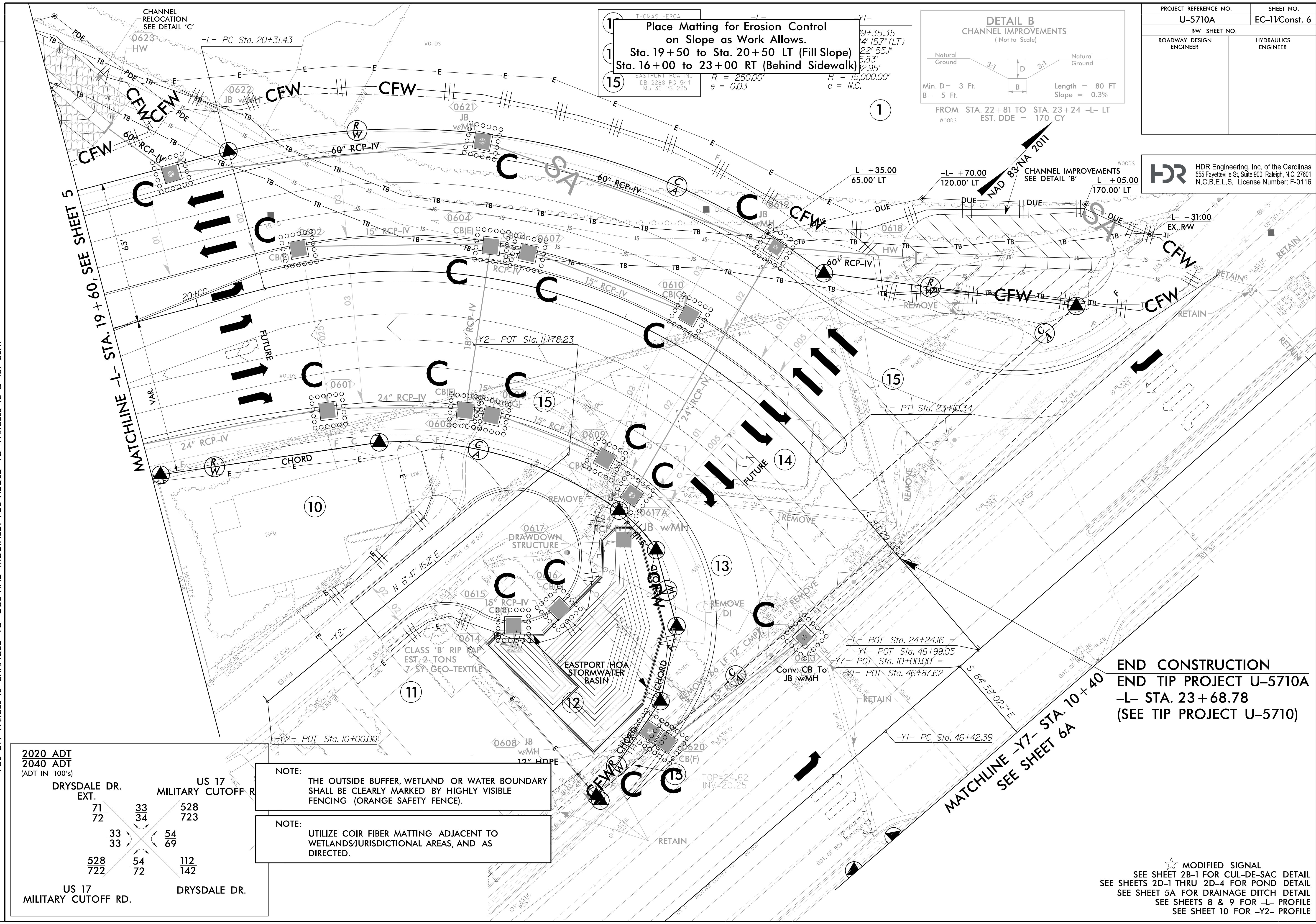
PROJECT REFERENCE NO.	SHEET NO.
U-5710A	EC-11/Const. 6
RW SHEET NO.	
ROADWAY DESIGN ENGINEER	HYDRAULICS ENGINEER

HDR HDR Engineering, Inc. of the Carolinas
 555 Fayetteville St. Suite 900 Raleigh, N.C. 27601
 N.C.B.E.L.S. License Number: F-0116



Place Matting for Erosion Control on Slope as Work Allows.
 Sta. 19+50 to Sta. 20+50 LT (Fill Slope)
 Sta. 16+00 to 23+00 RT (Behind Sidewalk)

$R = 250.00'$ $e = 0.03$
 $R = 15,000.00'$ $e = N.C.$



2020 ADT	2040 ADT	US 17 MILITARY CUTOFF RD.	
(ADT IN 100's)			
71	33	528	
72	34	723	
33	54		
33	69		
528	54	112	
722	72	142	
US 17 MILITARY CUTOFF RD.		DRYSDALE DR.	

NOTE: THE OUTSIDE BUFFER, WETLAND OR WATER BOUNDARY SHALL BE CLEARLY MARKED BY HIGHLY VISIBLE FENCING (ORANGE SAFETY FENCE).

NOTE: UTILIZE COIR FIBER MATTING ADJACENT TO WETLANDS/JURISDICTIONAL AREAS, AND AS DIRECTED.

END CONSTRUCTION
 END TIP PROJECT U-5710A
 -L- STA. 23+68.78
 (SEE TIP PROJECT U-5710)

★ MODIFIED SIGNAL
 SEE SHEET 2B-1 FOR CUL-DE-SAC DETAIL
 SEE SHEETS 2D-1 THRU 2D-4 FOR POND DETAIL
 SEE SHEET 5A FOR DRAINAGE DITCH DETAIL
 SEE SHEETS 8 & 9 FOR -L- PROFILE
 SEE SHEET 10 FOR -Y2- PROFILE

PLOT DRIVER: NCDOT_color_eng_100.plt
 USER: DWAGNER
 FILE: North_Carolina_Dept_of_Transportation\2014_16_Planning_Design\LSA\U-5710_T0_4_c\06_00_Project_Engineering_and_Design\U-5710A_Erosion_Control\U5710A_EC_PSH.dgn
 PENTABLE: NCDOT_EC_FINAL_BW.tbl
 TIME: 3:42:18 PM
 DATE: 12/8/2021
 REVISIONS
 ROW REV. - MAY 28, 2019 - PUE ADDED TO PARCEL 12, CEH
 ROW REV. - JUNE 19, 2019 - REVISED PDE AND ADDED TCE TO PARCEL 2. REVISED TCE TO STAY OFF OF HOUSE ON PARCEL 10. CEH.
 ROW REV. - AUGUST 16, 2019 - PARCEL 2 RE-NUMBERED TO PARCEL 1. ROW ADDED TO PARCEL 11. ROW ADJUSTED AND REDUCED ON PARCELS 12 & 13. CEH.
 PUE ON PARCEL 12 CHANGED TO DUE AND MODIFIED. PDE ADDED TO PARCELS 12 & 13. CEH.