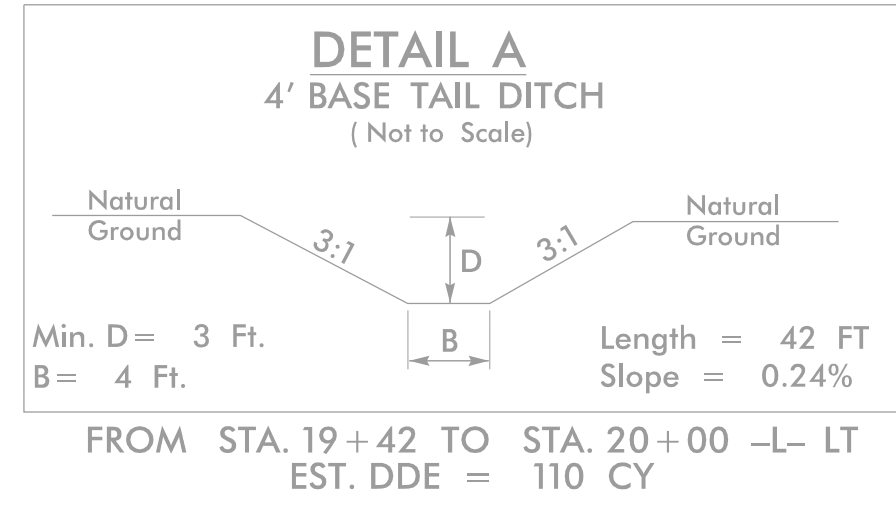
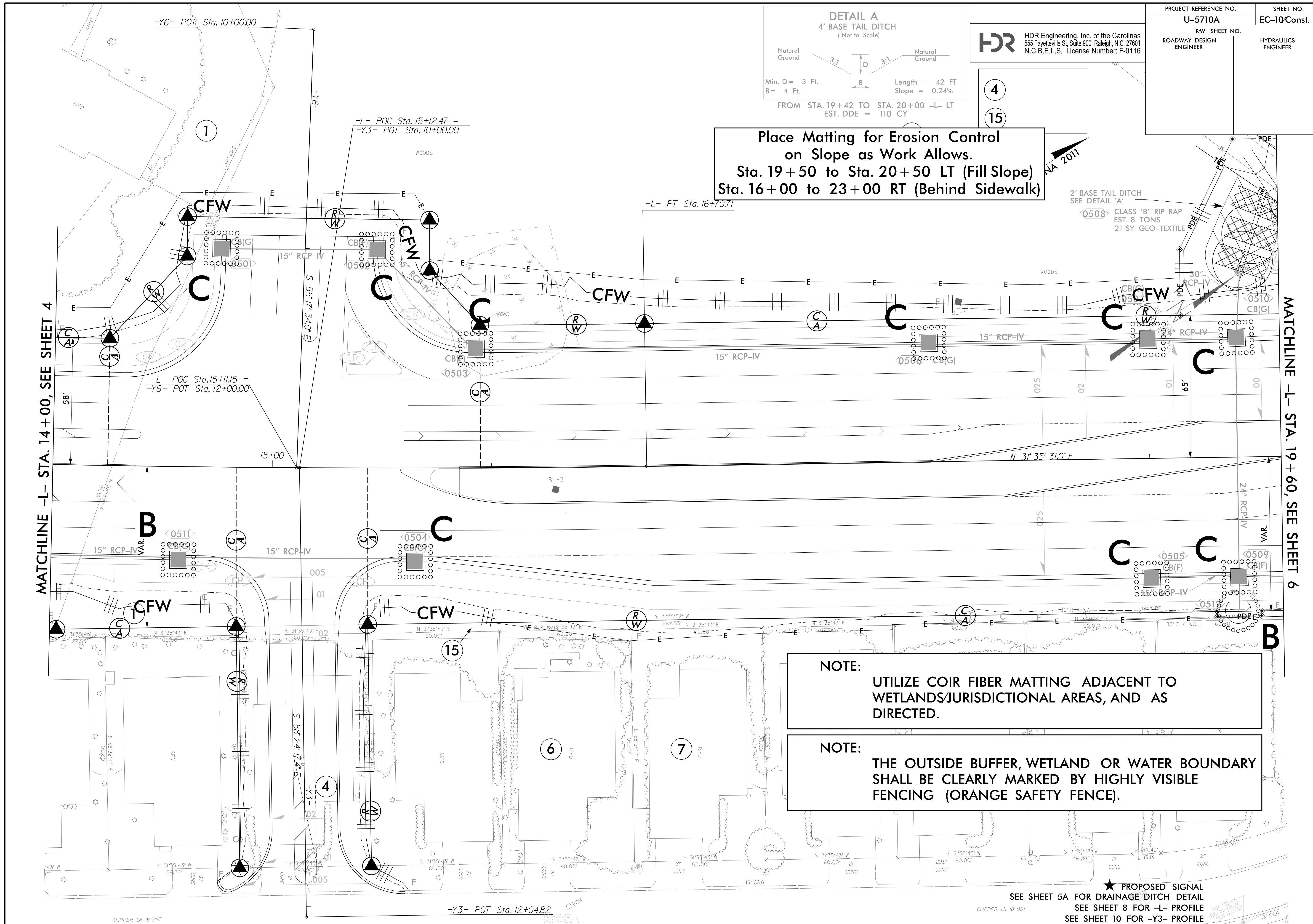


PLOT DRIVER: NCDOT\_color\_eng\_100.plt  
 USER: DWAGNER  
 FILE: North\_Carolina\_Dept\_of\_Transportation\2014\_16\_Planning\_Design\LSA\U-5710A\5710\_T0\_4\_c\06\_00\_Project\_Engineering\_omd\_Design\U-5710A\Erosion\_Control\U5710A\_EC\_PSH.dgn

REVISIONS

REV. - JUNE 19, 2019 - ADDED TCE TO PARCELS 1 & 2. ADDITIONAL PDE AND TWEAKED ROW ON PARCEL 2. REDUCED TCE ON PARCELS 6, 7, 8 AND 9. CEH.  
 ROW REV. - AUGUST 16, 2019 - PARCEL 2 RE-NUMBERED TO PARCEL 1. ADDED RIGHT OF WAY AND TCE AROUND CENTERPOINT STUBOUT ON PARCEL 1. REMOVED TCE ON PARCELS 3 & 5 ELIMINATING CLAIMS. PARCEL 15A ADDED FOR EASTPORT HOA. CEH.



PROJECT REFERENCE NO. <b>U-5710A</b>	SHEET NO. <b>EC-10/Const. 5</b>
ROADWAY DESIGN ENGINEER	HYDRAULICS ENGINEER

HDR Engineering, Inc. of the Carolinas  
 555 Fayetteville St, Suite 900 Raleigh, N.C. 27601  
 N.C.B.E.L.S. License Number: F-0116

**Place Matting for Erosion Control on Slope as Work Allows.**  
 Sta. 19+50 to Sta. 20+50 LT (Fill Slope)  
 Sta. 16+00 to 23+00 RT (Behind Sidewalk)

**NOTE:**  
 UTILIZE COIR FIBER MATTING ADJACENT TO WETLANDS/JURISDICTIONAL AREAS, AND AS DIRECTED.

**NOTE:**  
 THE OUTSIDE BUFFER, WETLAND OR WATER BOUNDARY SHALL BE CLEARLY MARKED BY HIGHLY VISIBLE FENCING (ORANGE SAFETY FENCE).

★ PROPOSED SIGNAL  
 SEE SHEET 5A FOR DRAINAGE DITCH DETAIL  
 SEE SHEET 8 FOR -L- PROFILE  
 SEE SHEET 10 FOR -Y3- PROFILE

MATCHLINE -L- STA. 14 + 00, SEE SHEET 4

MATCHLINE -L- STA. 19 + 60, SEE SHEET 6