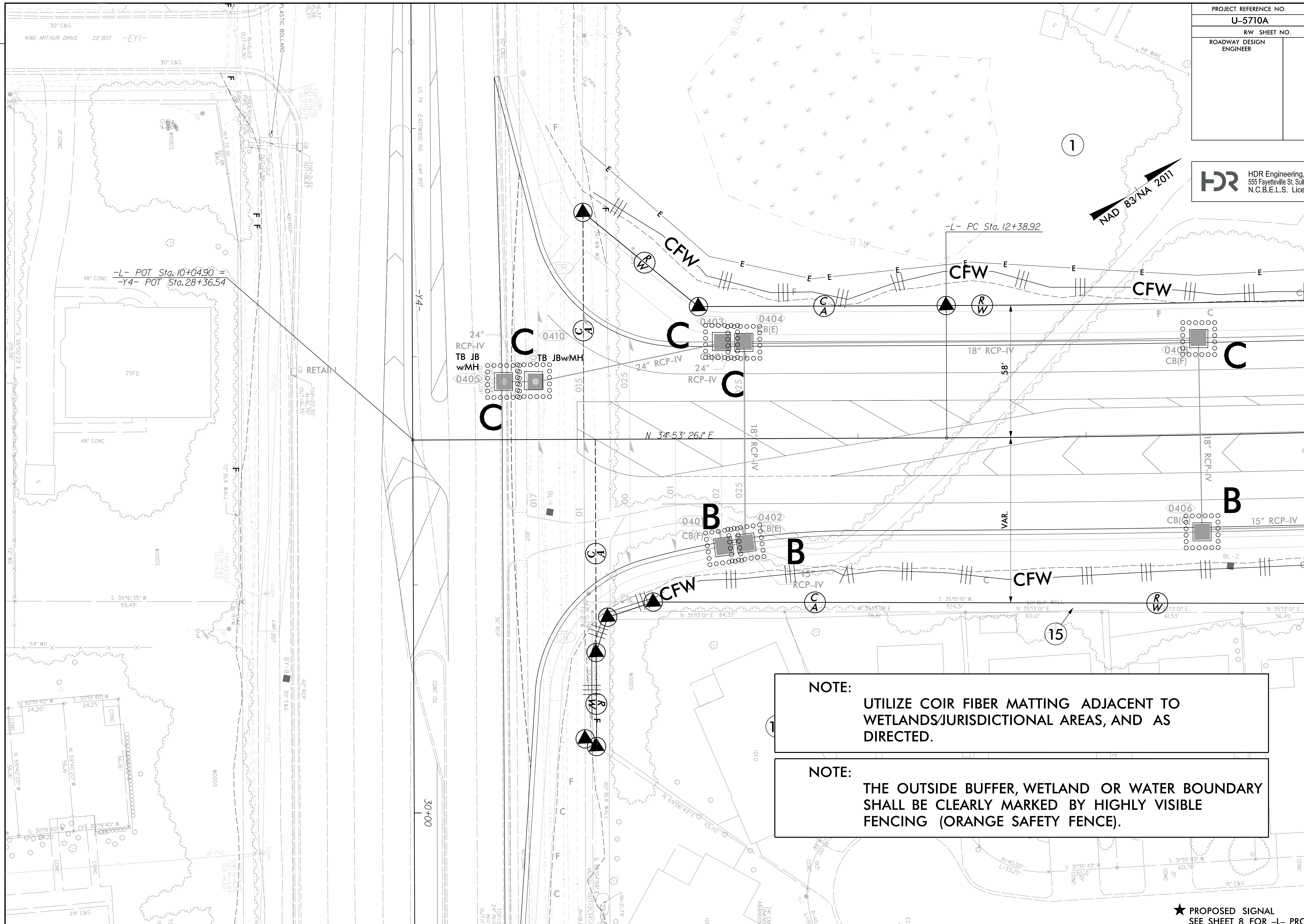


PROJECT REFERENCE NO. U-5710A	SHEET NO. EC-9/Const. 4
RW SHEET NO.	
ROADWAY DESIGN ENGINEER	HYDRAULICS ENGINEER

HDR HDR Engineering, Inc. of the Carolinas
555 Fayetteville St. Suite 900 Raleigh, N.C. 27601
N.C.B.E.L.S. License Number: F-0116



MATCHLINE -L- STA. 14+00, SEE SHEET 5



NOTE:
UTILIZE COIR FIBER MATTING ADJACENT TO WETLANDS/JURISDICTIONAL AREAS, AND AS DIRECTED.

NOTE:
THE OUTSIDE BUFFER, WETLAND OR WATER BOUNDARY SHALL BE CLEARLY MARKED BY HIGHLY VISIBLE FENCING (ORANGE SAFETY FENCE).

★ PROPOSED SIGNAL
SEE SHEET 8 FOR -L- PROFILE

MATCHLINE -Y4- STA. 30+50, SEE SHEET 7

ROW REV. - JUNE 19, 2019 - ADDITION OF PARCEL 16 (ROW AND TCE), ADDITION OF PARCEL 17 (PUE AND TCE), ADDITION OF PARCEL 18 (PUE), ADDED PUE AND TCE TO PARCEL 1. CEH.
 ROW REV. - AUGUST 16, 2019 - REMOVED TEMPORARY CONSTRUCTION EASEMENT (TCE) FROM PARCELS 16 & 17. TCE REDUCED ON PARCEL 1. ADDED PARCEL 15A FOR EASTPORT HOA. CEH.

REVISIONS
 PLOT DRIVER: NCDOT_color_eng_100.plt
 USER: DWAGNER
 FILE: North_Carolina_Dept_of_Transportation\2014_16_Planning_Design\LSA\U-5710_TO_4_c\06_00_Project_Engineering_and_Design\U-5710A_EC_PSH.dgn
 PENTABLE: NCDOT_EC_FINAL_BW.tbl
 DATE: 12/8/2021
 TIME: 3:41:31 PM