

PROJECT REFERENCE NO.	SHEET NO.
U-5710A	EC-8Const. 7
RW SHEET NO.	
ROADWAY DESIGN ENGINEER	HYDRAULICS ENGINEER

HDR HDR Engineering, Inc. of the Carolinas
 555 Fayetteville St. Suite 900 Raleigh, N.C. 27601
 N.C.B.E.L.S. License Number: F-0116

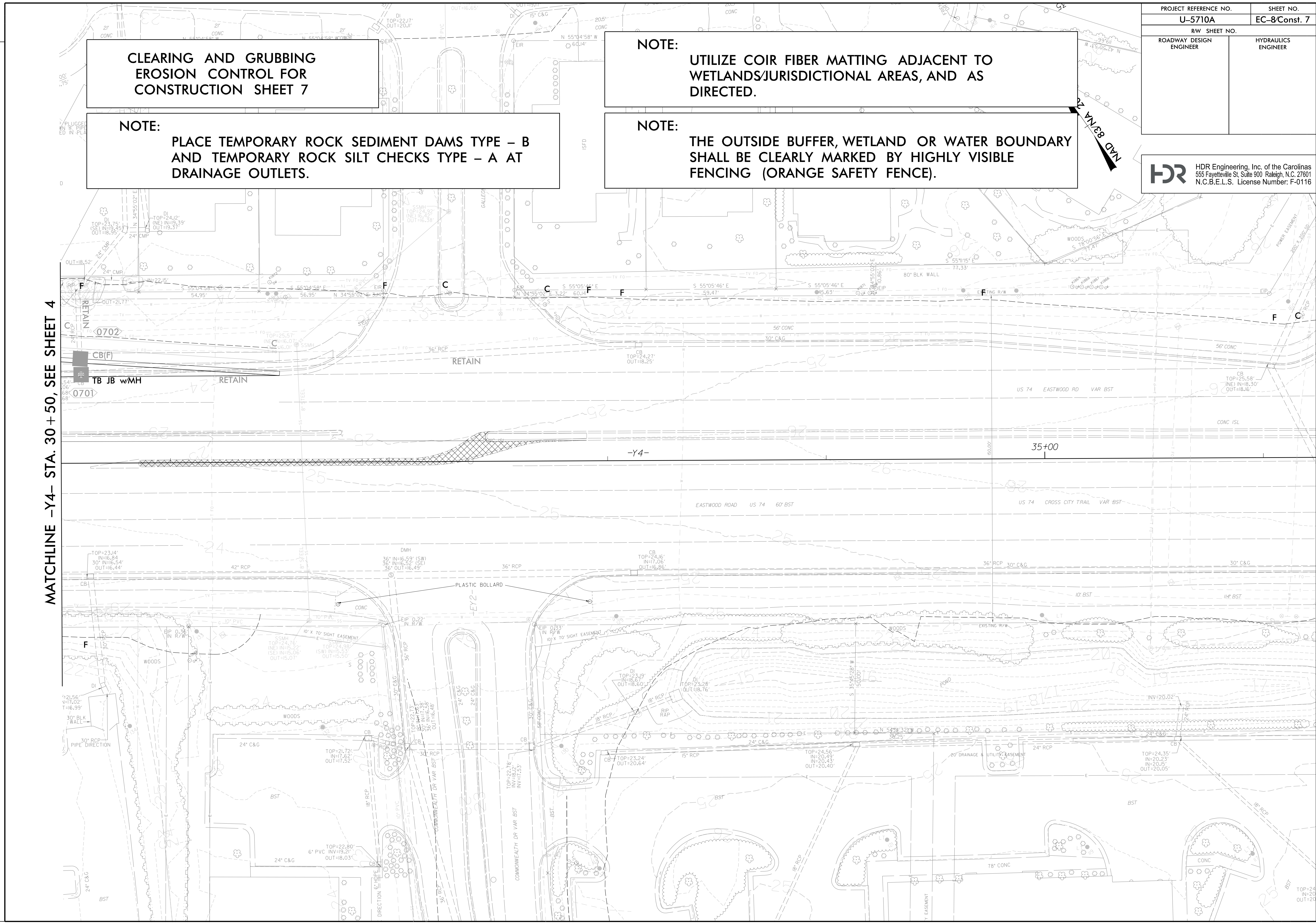
**CLEARING AND GRUBBING
 EROSION CONTROL FOR
 CONSTRUCTION SHEET 7**

NOTE:
 PLACE TEMPORARY ROCK SEDIMENT DAMS TYPE - B
 AND TEMPORARY ROCK SILT CHECKS TYPE - A AT
 DRAINAGE OUTLETS.

NOTE:
 UTILIZE COIR FIBER MATTING ADJACENT TO
 WETLANDS/JURISDICTIONAL AREAS, AND AS
 DIRECTED.

NOTE:
 THE OUTSIDE BUFFER, WETLAND OR WATER BOUNDARY
 SHALL BE CLEARLY MARKED BY HIGHLY VISIBLE
 FENCING (ORANGE SAFETY FENCE).

MATCHLINE -Y4- STA. 30+50, SEE SHEET 4



PLOT DRIVER: NCDOT_ec_color_eng_100.plt
 USER: DWAGNER
 FILE: North_Carolina_Dept_of_Transportation\2014_16_Planning_Design\LSA\U-5710_TO_4_c\06.00.Project-Engineering_omd_Design\U-5710A_EC_PSH.dgn

REVISIONS

ROW REV - JUNE 19, 2019 - ADDITION OF PARCEL 18 (PUE AND DUE), ADDITION OF PARCEL 19 (ROW, DUE AND TCE), ADDITION OF PARCEL 20 (ROW, PUE AND TCE), CEH.
 ROW REV - AUGUST 16, 2019 - REMOVED TEMPORARY CONSTRUCTION EASEMENT (TCE) FROM PARCELS 19 & 20. CEH.