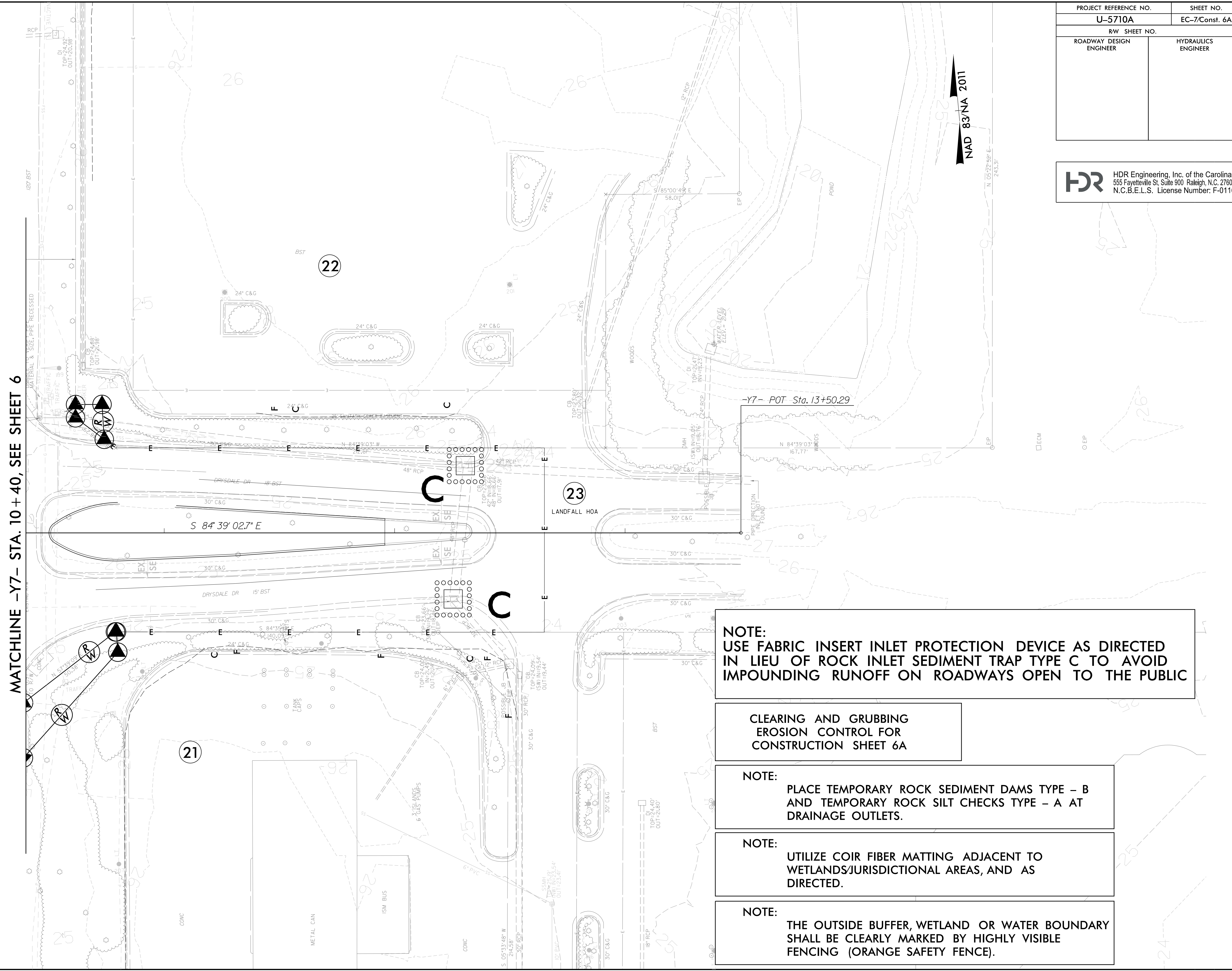


REVISIONS

MATCHLINE -Y7- STA. 10 + 40, SEE SHEET 6



**NOTE:**  
 USE FABRIC INSERT INLET PROTECTION DEVICE AS DIRECTED  
 IN LIEU OF ROCK INLET SEDIMENT TRAP TYPE C TO AVOID  
 IMPOUNDING RUNOFF ON ROADWAYS OPEN TO THE PUBLIC

**CLEARING AND GRUBBING  
 EROSION CONTROL FOR  
 CONSTRUCTION SHEET 6A**

**NOTE:**  
 PLACE TEMPORARY ROCK SEDIMENT DAMS TYPE - B  
 AND TEMPORARY ROCK SILT CHECKS TYPE - A AT  
 DRAINAGE OUTLETS.

**NOTE:**  
 UTILIZE COIR FIBER MATTING ADJACENT TO  
 WETLANDS/JURISDICTIONAL AREAS, AND AS  
 DIRECTED.

**NOTE:**  
 THE OUTSIDE BUFFER, WETLAND OR WATER BOUNDARY  
 SHALL BE CLEARLY MARKED BY HIGHLY VISIBLE  
 FENCING (ORANGE SAFETY FENCE).

PROJECT REFERENCE NO. <b>U-5710A</b>	SHEET NO. <b>EC-7/Const. 6A</b>
RW SHEET NO.	
ROADWAY DESIGN ENGINEER	HYDRAULICS ENGINEER

**HDR** HDR Engineering, Inc. of the Carolinas  
 555 Fayetteville St. Suite 900 Raleigh, N.C. 27601  
 N.C.B.E.L.S. License Number: F-0116