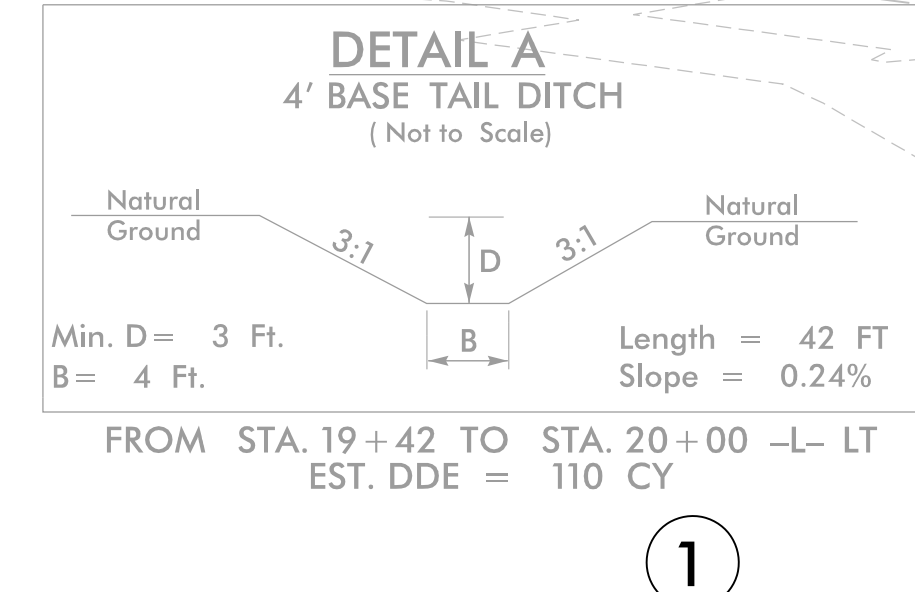


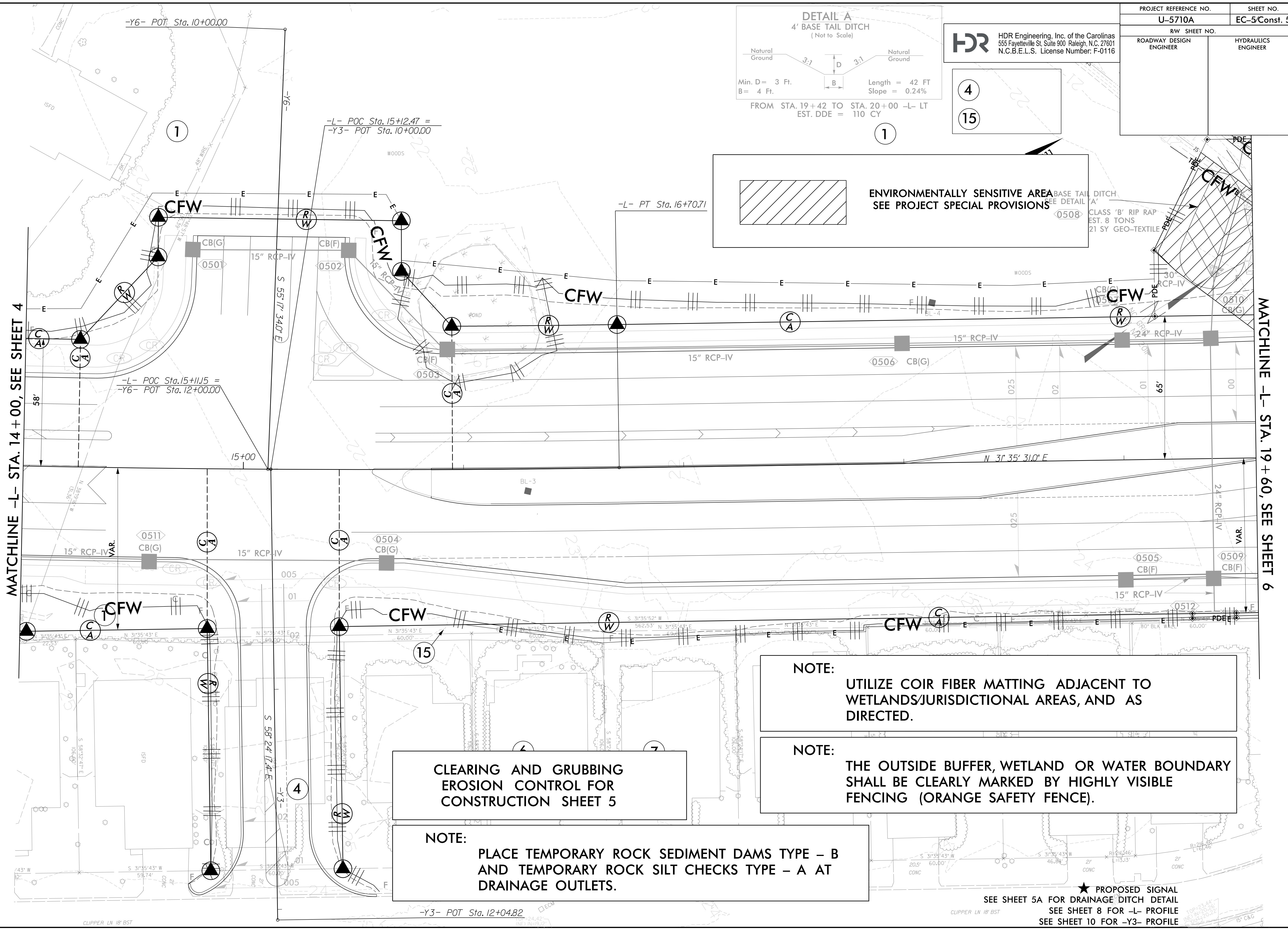
PROJECT REFERENCE NO.	SHEET NO.
U-5710A	EC-5Const. 5
RW SHEET NO.	
ROADWAY DESIGN ENGINEER	HYDRAULICS ENGINEER

HDR HDR Engineering, Inc. of the Carolinas
555 Fayetteville St, Suite 900 Raleigh, N.C. 27601
N.C.B.E.L.S. License Number: F-0116



4
15

ENVIRONMENTALLY SENSITIVE AREA
SEE PROJECT SPECIAL PROVISIONS



MATCHLINE -L- STA. 14 + 00, SEE SHEET 4

MATCHLINE -L- STA. 19 + 60, SEE SHEET 6

NOTE:
UTILIZE COIR FIBER MATTING ADJACENT TO WETLANDS/JURISDICTIONAL AREAS, AND AS DIRECTED.

NOTE:
THE OUTSIDE BUFFER, WETLAND OR WATER BOUNDARY SHALL BE CLEARLY MARKED BY HIGHLY VISIBLE FENCING (ORANGE SAFETY FENCE).

CLEARING AND GRUBBING EROSION CONTROL FOR CONSTRUCTION SHEET 5

NOTE:
PLACE TEMPORARY ROCK SEDIMENT DAMS TYPE - B AND TEMPORARY ROCK SILT CHECKS TYPE - A AT DRAINAGE OUTLETS.

ROW REV. - JUNE 19, 2019 - ADDED TCE TO PARCELS 1 & 2. ADDITIONAL PDE AND TWEAKED ROW ON PARCEL 2. REDUCED TCE ON PARCELS 6, 7, 8 AND 9. CEH
ROW REV. - AUGUST 16, 2019 - PARCEL 2 RE-NUMBERED TO PARCEL 1. ADDED RIGHT OF WAY AND TCE AROUND CENTERPOINT STUBOUT ON PARCEL 1. REMOVED TCE ON PARCELS 3 & 5
ELIMINATING CLAIMS. PARCEL 15A ADDED FOR EASTPORT HOA. CEH.

REVISIONS

PLOT DRIVER: NCDOT...
USER: DWAGNER
FILE: North_Carolina_Dept_of_Transportation\2014_16_Planning_Design\LSA\U-5710_10_4_c\06_00_Project_Engineering_omd_Design\U-5710A\Erosion_Control\U5710A_EC_PSH.dgn

★ PROPOSED SIGNAL
SEE SHEET 5A FOR DRAINAGE DITCH DETAIL
SEE SHEET 8 FOR -L- PROFILE
SEE SHEET 10 FOR -Y3- PROFILE