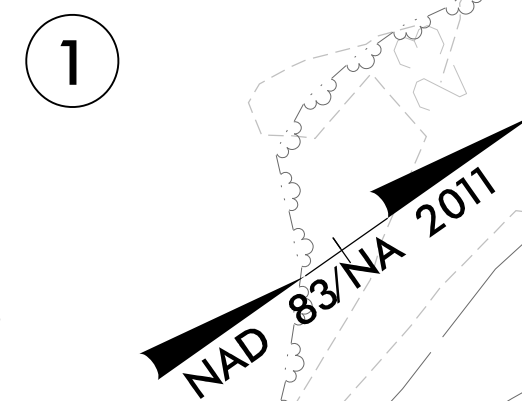


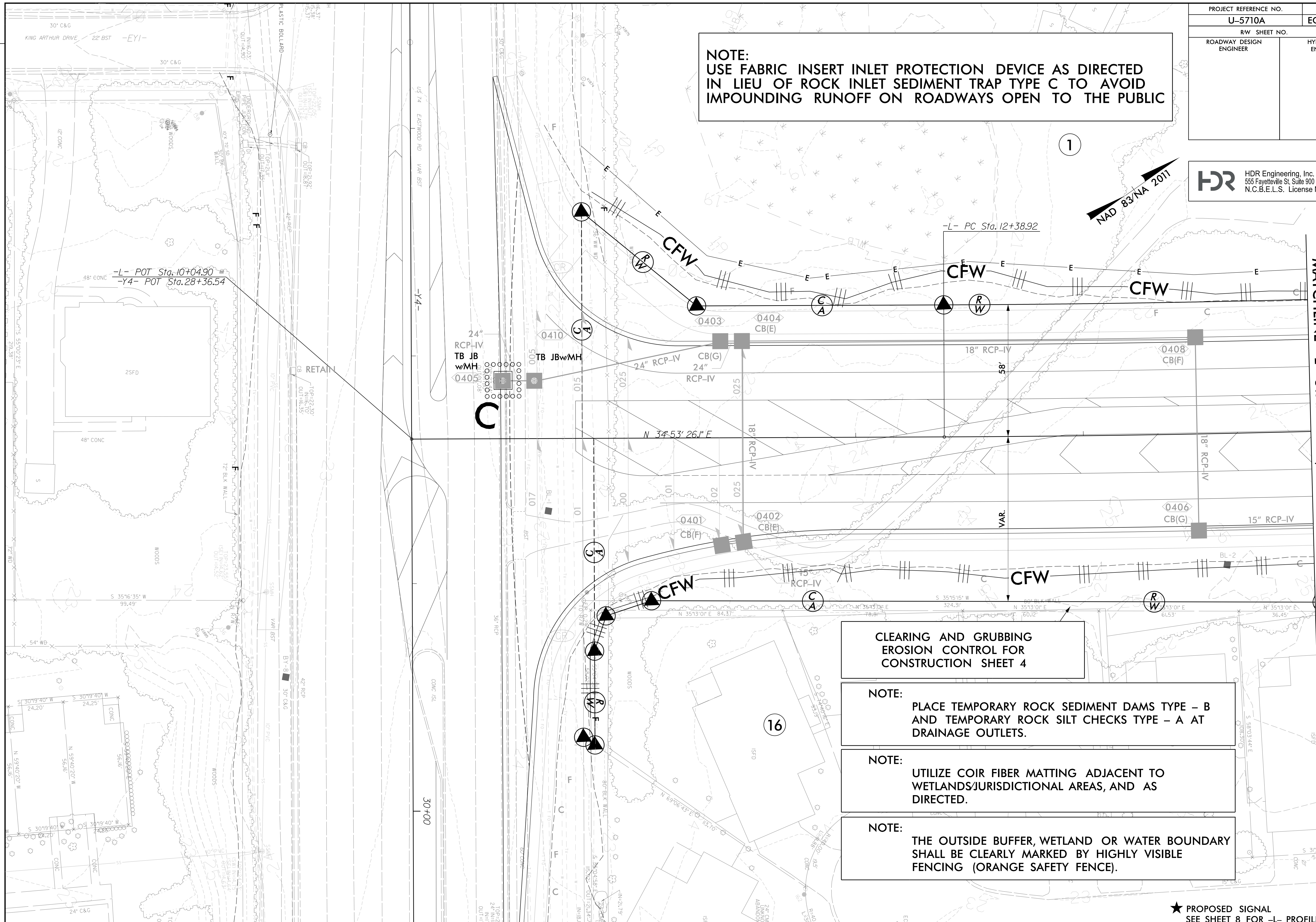
PROJECT REFERENCE NO.	SHEET NO.
U-5710A	EC-4Const. 4
RW SHEET NO.	
ROADWAY DESIGN ENGINEER	HYDRAULICS ENGINEER

**HDR** HDR Engineering, Inc. of the Carolinas  
 555 Fayetteville St. Suite 900 Raleigh, N.C. 27601  
 N.C.B.E.L.S. License Number: F-0116

**NOTE:**  
 USE FABRIC INSERT INLET PROTECTION DEVICE AS DIRECTED  
 IN LIEU OF ROCK INLET SEDIMENT TRAP TYPE C TO AVOID  
 IMPOUNDING RUNOFF ON ROADWAYS OPEN TO THE PUBLIC



MATCHLINE -L- STA. 14+00, SEE SHEET 5



**CLEARING AND GRUBBING  
 EROSION CONTROL FOR  
 CONSTRUCTION SHEET 4**

**NOTE:**  
 PLACE TEMPORARY ROCK SEDIMENT DAMS TYPE - B  
 AND TEMPORARY ROCK SILT CHECKS TYPE - A AT  
 DRAINAGE OUTLETS.

**NOTE:**  
 UTILIZE COIR FIBER MATTING ADJACENT TO  
 WETLANDS/JURISDICTIONAL AREAS, AND AS  
 DIRECTED.

**NOTE:**  
 THE OUTSIDE BUFFER, WETLAND OR WATER BOUNDARY  
 SHALL BE CLEARLY MARKED BY HIGHLY VISIBLE  
 FENCING (ORANGE SAFETY FENCE).

★ PROPOSED SIGNAL  
 SEE SHEET 8 FOR -L- PROFILE

MATCHLINE -Y4- STA. 30+50, SEE SHEET 7

ROW REV. - JUNE 19, 2019 - ADDITION OF PARCEL 16 (ROW AND TCE) ADDITION OF PARCEL 17 (PUE AND TCE) ADDITION OF PARCEL 18 (PUE) ADDED PUE AND TCE TO PARCEL 1. CEH.  
 ROW REV. - AUGUST 16, 2019 - REMOVED TEMPORARY CONSTRUCTION EASEMENT (TCE) FROM PARCELS 16 & 17. TCE REDUCED ON PARCEL 1. ADDED PARCEL 15A FOR EASTPORT HOA. CEH.

REVISIONS  
 PLOT DRIVER: NCDOT\_ec\_color\_eng\_100.plt  
 USER: DWAGNER  
 FILE: North\_Carolina\_Dept\_of\_Transportation\2014\_16\_Planning\_Design\LSA\U-5710\_TO\_4\_c\06\_00\_Project\_Engineering\_and\_Design\U-5710A\_Erosion\_Control\U5710A\_EC\_PSH.dgn  
 PENTABLE: NCDOT\_EC\_C&G\_BW.tbl  
 TIME: 3:39:16 PM  
 DATE: 12/8/2021