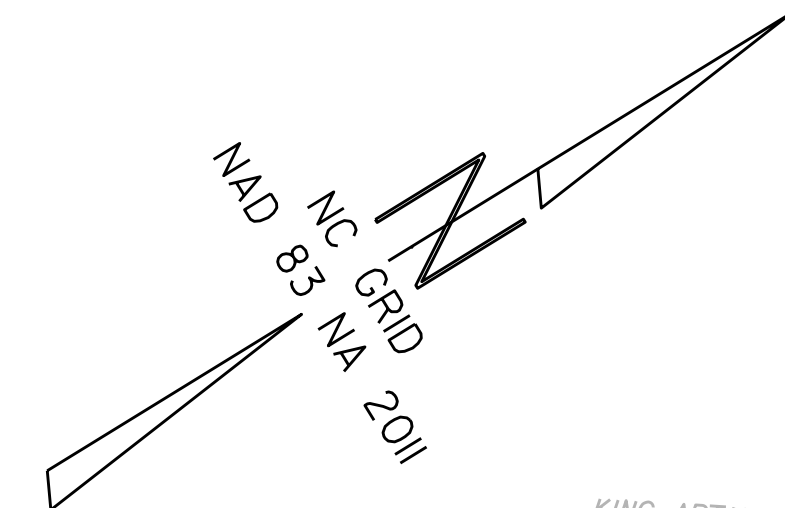
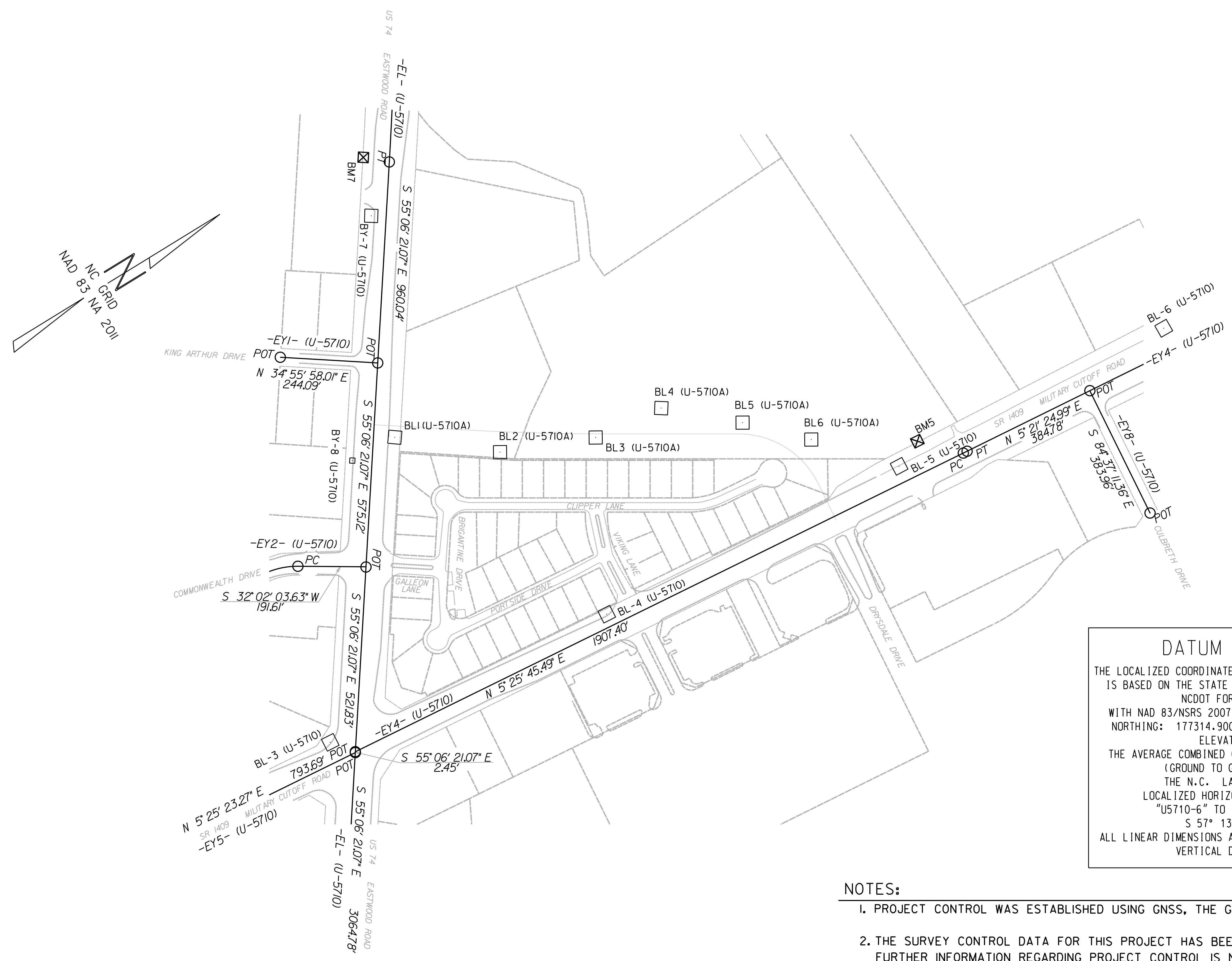


PROJECT REFERENCE NO.	SHEET NO.
U-5710A	RW02C-1
Location and Surveys	

SURVEY CONTROL SHEET U-5710A

W/EXISTING CENTERLINE ALIGNMENTS PRIOR TO CONSTRUCTION



DATUM DESCRIPTION

THE LOCALIZED COORDINATE SYSTEM DEVELOPED FOR THIS PROJECT IS BASED ON THE STATE PLANE COORDINATES ESTABLISHED BY NCDOT FOR MONUMENT "U5710-6" WITH NAD 83/NSRS 2007 STATE PLANE GRID COORDINATES OF NORTHING: 177314.900(ft) EASTING: 2351770.796(ft) ELEVATION: 19.026(ft)

THE AVERAGE COMBINED GRID FACTOR USED ON THIS PROJECT (GROUND TO GRID) IS: 1.0000366380

THE N.C. LAMBERT GRID BEARING AND LOCALIZED HORIZONTAL GROUND DISTANCE FROM "U5710-6" TO -L- STATION 10+04.90 IS S 57° 13' 15.82 E 1499.67'

ALL LINEAR DIMENSIONS ARE LOCALIZED HORIZONTAL DISTANCES
VERTICAL DATUM USED IS NAVD 88

- NOTES:**
- PROJECT CONTROL WAS ESTABLISHED USING GNSS, THE GLOBAL NAVIGATION SATELLITE SYSTEM.
 - THE SURVEY CONTROL DATA FOR THIS PROJECT HAS BEEN COMPILED FROM VARIOUS SOURCES. IF FURTHER INFORMATION REGARDING PROJECT CONTROL IS NEEDED, PLEASE CONTACT THE LOCATION AND SURVEYS UNIT.

REVISIONS

6/2/09
19-DEC-2019 10:37
N:\New_Hanover_Co\U5710A\Check\191106\U5710a_1s_rw02c-1.191107.dgn
C:\sowter AT LIS:2999004