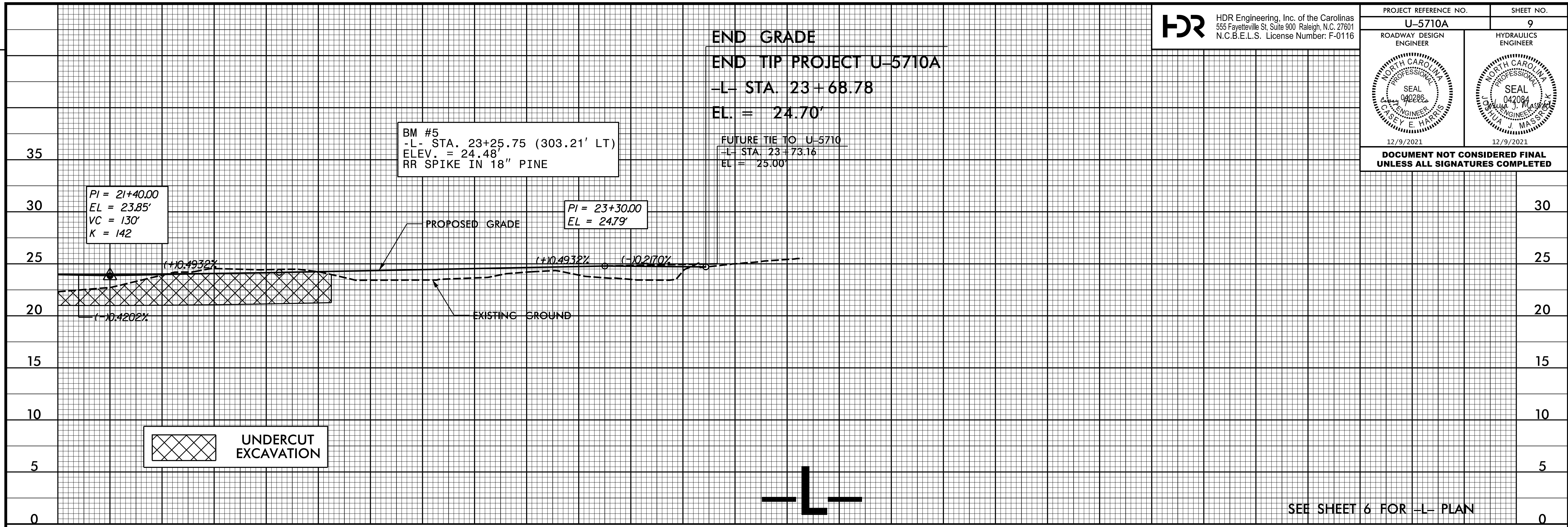


PROJECT REFERENCE NO. <b>U-5710A</b>	SHEET NO. <b>9</b>
ROADWAY DESIGN ENGINEER	HYDRAULICS ENGINEER
12/9/2021	12/9/2021

**DOCUMENT NOT CONSIDERED FINAL  
UNLESS ALL SIGNATURES COMPLETED**



SEE SHEET 6 FOR -L- PLAN

UNDERCUT EXCAVATION

**END GRADE**  
**END TIP PROJECT U-5710A**  
**-L- STA. 23+68.78**  
**EL. = 24.70'**  
FUTURE TIE TO U-5710  
**-L- STA. 23+73.16**  
**EL. = 25.00'**

**BM #5**  
**-L- STA. 23+25.75 (303.21' LT)**  
**ELEV. = 24.48'**  
**RR SPIKE IN 18" PINE**

PI = 21+40.00  
EL = 23.85'  
VC = 130'  
K = 142

PI = 23+30.00  
EL = 24.79'

REVISIONS

PLOT DRIVER: NCDOT\_color\_eng\_50.plt  
USER: CHARRIS  
FILE: North.Carolina.Dept.of.Transportation\2014\_16.Planning\_Design\_LSA\U-5710\_TO\_4\_c\06.00.Project-Engineering\_and\_Design\U-5710A\_Roadway\Proj\U5710A\_RDY\_PFL\_09.dgn  
PENTABLE: NCDOT\_pshpfl\_conventional.tbl  
DATE: 12/9/2021  
TIME: 10:28:36 AM