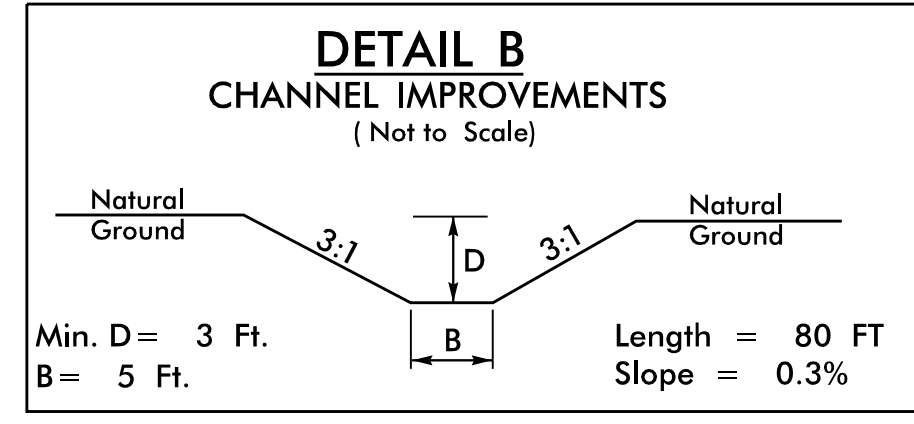


PROJECT REFERENCE NO. <b>U-5710A</b>	SHEET NO. <b>6</b>
ROADWAY DESIGN ENGINEER <b>WORTH CAROLINA PROFESSIONAL ENGINEERS &amp; ARCHITECTS</b> SEAL 042282 CASEY E. HARRIS	HYDRAULICS ENGINEER <b>WORTH CAROLINA PROFESSIONAL ENGINEERS &amp; ARCHITECTS</b> SEAL 042084 J. M. STANLEY
4/19/2022	4/19/2022

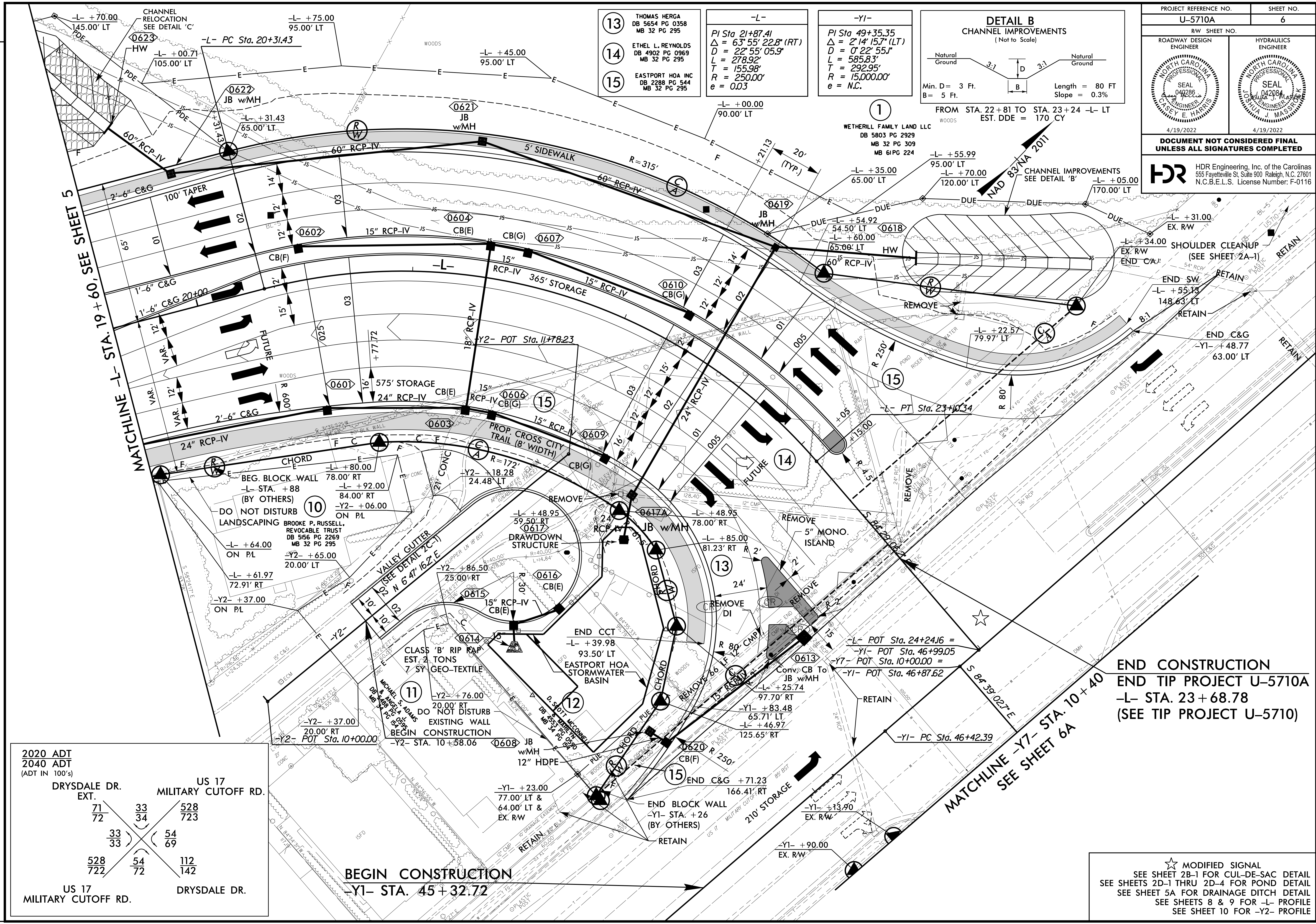
**DOCUMENT NOT CONSIDERED FINAL UNLESS ALL SIGNATURES COMPLETED**

**HDR** HDR Engineering, Inc. of the Carolinas  
555 Fayetteville St. Suite 900 Raleigh, N.C. 27601  
N.C.B.E.L.S. License Number: F-0116



FROM STA. 22+81 TO STA. 23+24 -L- LT  
EST. DDE = 170 CY

<b>13</b> THOMAS MERGA DB 5654 PG 0358 MB 32 PG 295	<b>-L-</b> PI Sta 21+87.41 Δ = 63° 55' 22.8" (RT) D = 22° 55' 05.9" L = 278.92' T = 155.98' R = 250.00' e = 0.03	<b>-Y1-</b> PI Sta 49+35.35 Δ = 2° 14' 15.7" (LT) D = 0° 22' 55.5" L = 585.83' T = 292.95' R = 15,000.00' e = N.C.
---	---	---



2020 ADT 2040 ADT (ADT IN 100'S)		US 17 MILITARY CUTOFF RD.	
DRYSDALE DR. EXT.		71	33
		72	34
		528	723
		33	54
		33	69
		528	112
		722	142
US 17 MILITARY CUTOFF RD.		DRYSDALE DR.	

**BEGIN CONSTRUCTION**  
-Y1- STA. 45+32.72

**END CONSTRUCTION**  
END TIP PROJECT U-5710A  
-L- STA. 23+68.78  
(SEE TIP PROJECT U-5710)

★ MODIFIED SIGNAL  
SEE SHEET 2B-1 FOR CUL-DE-SAC DETAIL  
SEE SHEETS 2D-1 THRU 2D-4 FOR POND DETAIL  
SEE SHEET 5A FOR DRAINAGE DITCH DETAIL  
SEE SHEETS 8 & 9 FOR -L- PROFILE  
SEE SHEET 10 FOR -Y2- PROFILE

PLOT DRIVER: NCDOT\_pdf\_color\_eng\_50.plt  
 USER: CHARRIS  
 FILE: North\_Carolina\_Dept\_of\_Transportation\2014\_16\_Planning\_Design\LSA\U-5710\_TO\_4\_c.06.00.Project\_Engineering\_and\_Design\U-5710A\_Roadway\Proj\U5710A\_RDY\_PSH06.dgn  
 PENTABLE: NCDOT\_pshpfl\_conventional.tbl  
 TIME: 3:57:23 PM  
 DATE: 4/19/2022  
 REVISIONS