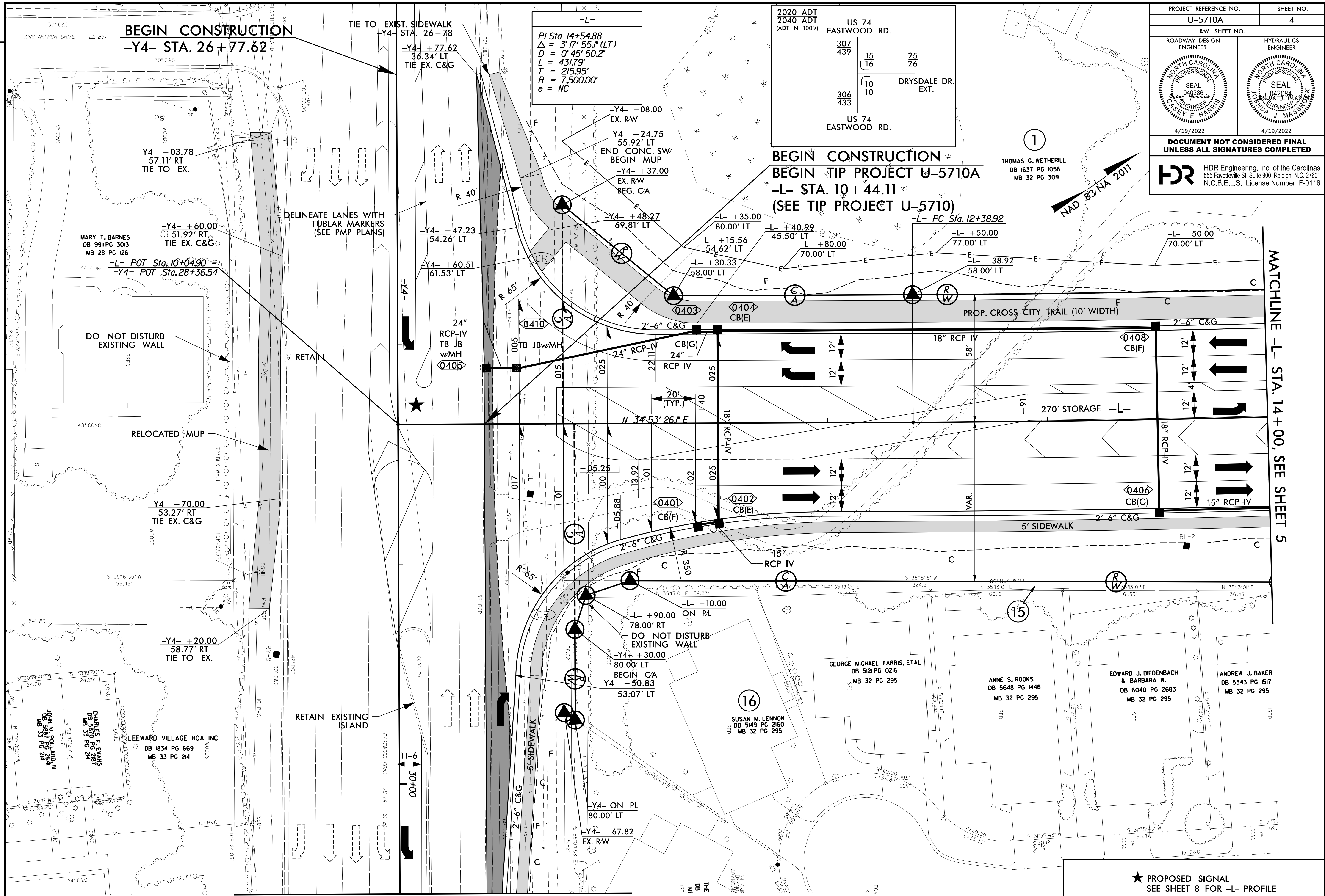
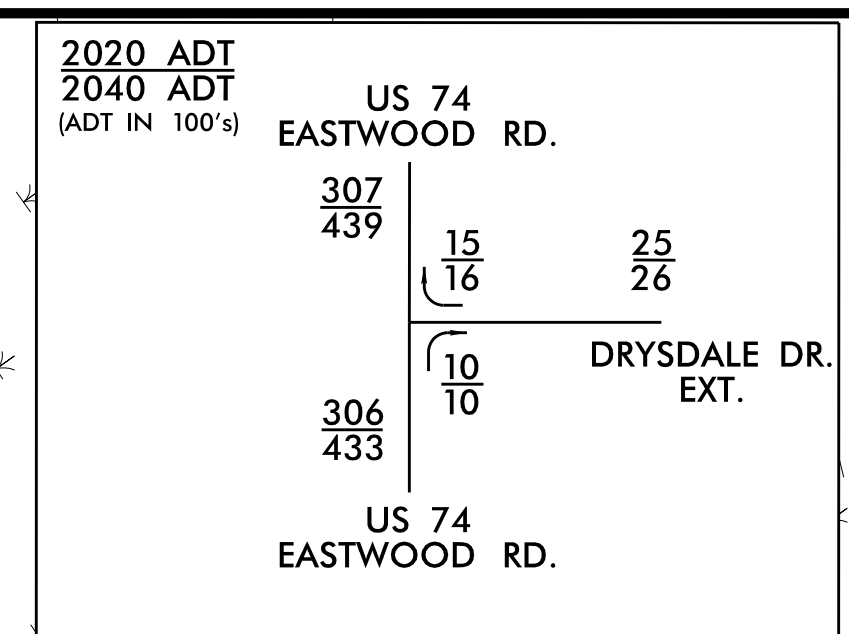


PROJECT REFERENCE NO. U-5710A		SHEET NO. 4	
RW SHEET NO.			
ROADWAY DESIGN ENGINEER		HYDRAULICS ENGINEER	
DOCUMENT NOT CONSIDERED FINAL UNLESS ALL SIGNATURES COMPLETED			
HDR Engineering, Inc. of the Carolinas 555 Fayetteville St. Suite 900 Raleigh, N.C. 27601 N.C.B.E.L.S. License Number: F-0116			



MARY T. BARNES
DB 99H PG 3013
MB 28 PG 126

48" CONC
-L- POT Sta. 10+04.90
-Y4- POT Sta. 28+36.54

JOHN M. POLLARD, III
DB 5887 PG 254H
MB 33 PG 214

CHARLES E. EVANS
DB 1834 PG 669
MB 33 PG 214

LEEWARD VILLAGE HOA INC
DB 1834 PG 669
MB 33 PG 214

GEORGE MICHAEL FARRIS, ETAL
DB 512PG 0216
MB 32 PG 295

SUSAN M. LENNON
DB 5149 PG 2160
MB 32 PG 295

ANNE S. ROOKS
DB 5648 PG 1446
MB 32 PG 295

EDWARD J. BIEDENBACH & BARBARA W.
DB 6040 PG 2683
MB 32 PG 295

ANDREW J. BAKER
DB 5343 PG 1517
MB 32 PG 295

PLOT DRIVER: NCDOT_pdf_color_eng_50.plt
PENTABLE: NCDOT_pshpfl_conventional.tbl
USER: CHARRIS
DATE: 4/19/2022
TIME: 2:56:02 PM
FILE: North_Carolina_Dept_of_Transportation\2014_16_Planning_Design_LSA\U-5710_TO_4_c\06_00_Project_Engineering_and_Design\U-5710A_Roadway\Proj\U5710A_RDY_PSH04.dgn

REVISIONS

MATCHLINE -Y4- STA. 30+50, SEE SHEET 7

MATCHLINE -L- STA. 14+00, SEE SHEET 5

★ PROPOSED SIGNAL
SEE SHEET 8 FOR -L- PROFILE