

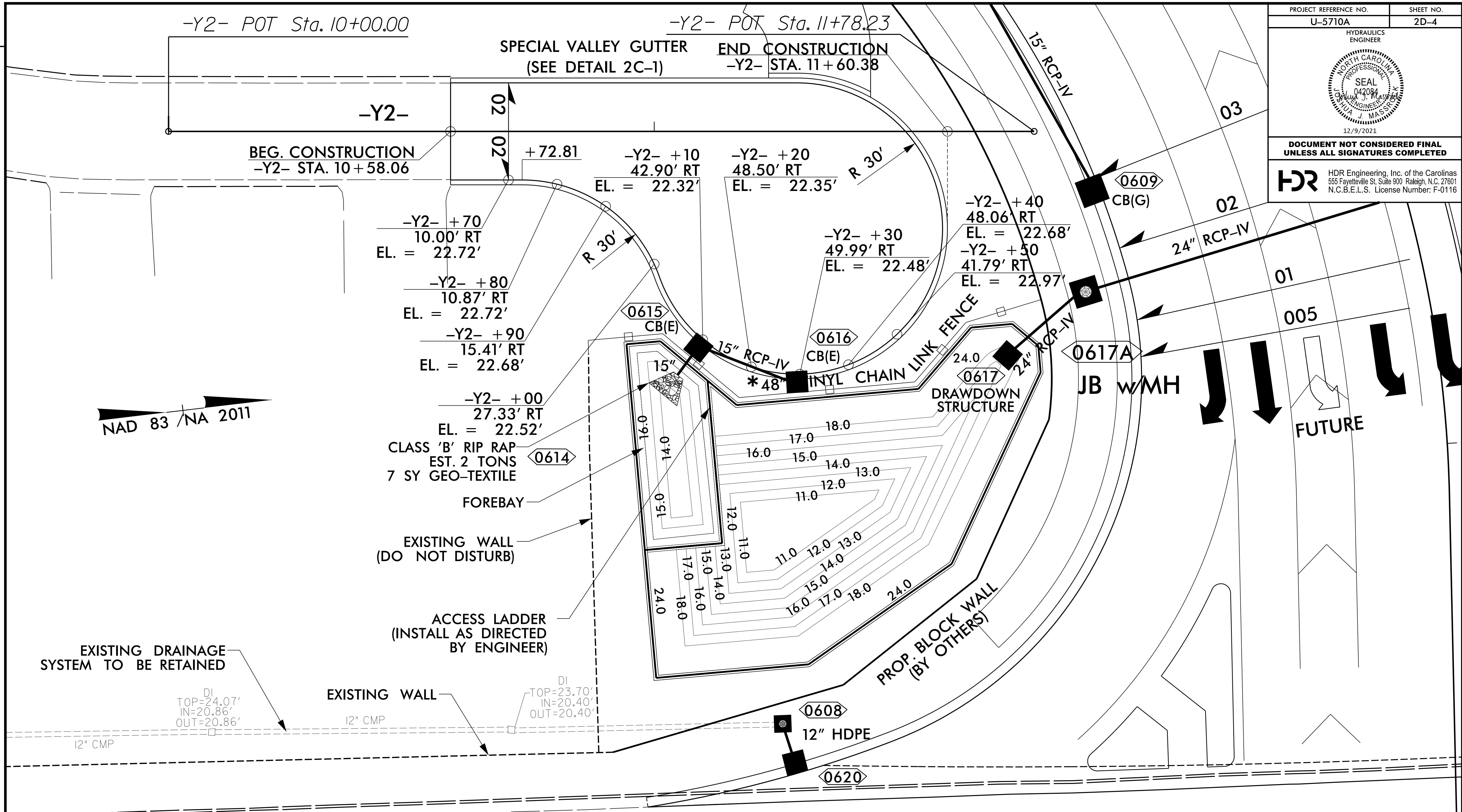


PROJECT REFERENCE NO. U-5710A	SHEET NO. 2D-4
HYDRAULICS ENGINEER	
	
12/9/2021	
DOCUMENT NOT CONSIDERED FINAL UNLESS ALL SIGNATURES COMPLETED	
	
HDR Engineering, Inc. of the Carolinas 555 Fayetteville St. Suite 900 Raleigh, N.C. 27601 N.C.B.E.L.S. License Number: F-0116	



DETAIL SHOWING ELEVATIONS ON CUL-DE-SAC

SCALE 1" = 10'
 SEE SHEET 6 FOR PLAN VIEW
 SEE SHEET 10 FOR Y2 PROFILE
 SEE SHEET BASIN_W FOR WALL ENVELOPE

*** NOTE:** FENCE NOT TO BE PLACED UNTIL DIRECTED BY THE ENGINEER. REFER TO CONTRACT DOCUMENTS FOR ADDITIONAL INFORMATION. FENCE SHALL HAVE (2) 10' WIDE ACCESS GATES: (1) ADJACENT TO THE OUTLET STRUCTURE AND (1) ADJACENT TO THE FOREBAY. INSTALL ACCESS LADDER AS DIRECTED BY ENGINEER.

PLOT DRIVER: NCDOT_pshpfl_conventional.tbl
 USER: CHARRIS
 FILE: North_Carolina_Dept_of_Transportation\2014_16_Planning_Design_LSA\U-5710_TO_4_c\06.00.Project-Engineering_and_Design\U-5710A_Roadway\Proj\U5710A_RDY_PSH_2D-4.dgn
 PENTABLE: NCDOT_pshpfl_conventional.tbl
 TIME: 10:27:21 AM
 DATE: 12/9/2021
 REVISIONS