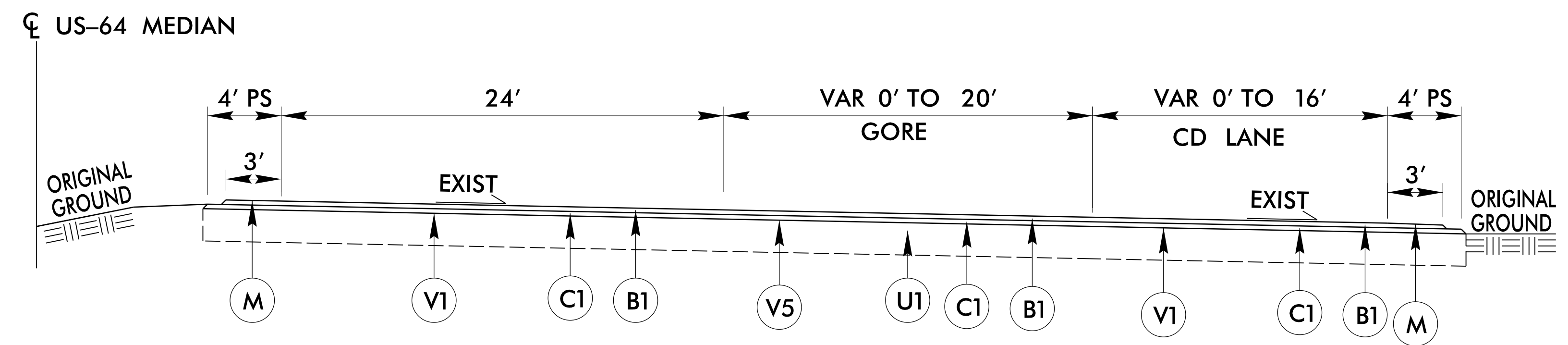
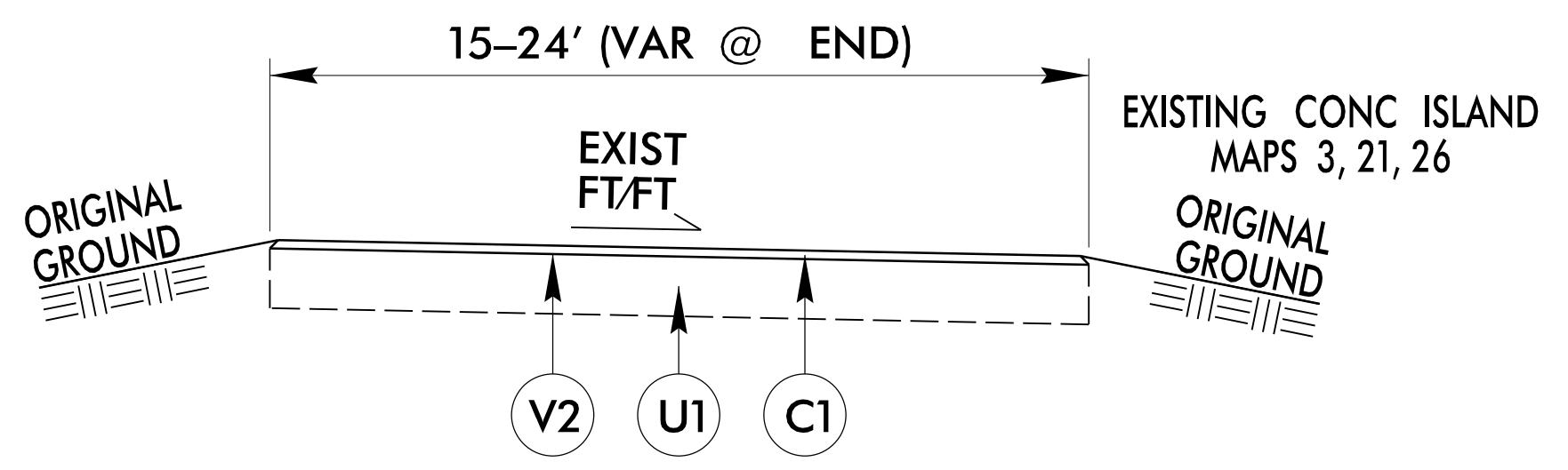


PROJECT REFERENCE NO.		SHEET NO.	
I-6046 47995.3.1		6	
PAVEMENT SCHEDULE			
B1	OGAFC		
C1	1.5" S9.5D		
D1	2.5" I19.0C		
E1	5" B25.0C		
F1	FOG SEAL		
T	EARTH MATERIAL		
U1	EXIST. PAVEMENT		
V1	2.25" MILL		
V2	1.50" MILL		
V3	2.25"-6" MILL		
V4	1.5"-5.25" MILL		
V5	INCIDENTAL MILL		
M	RUMBLE STRIPS		

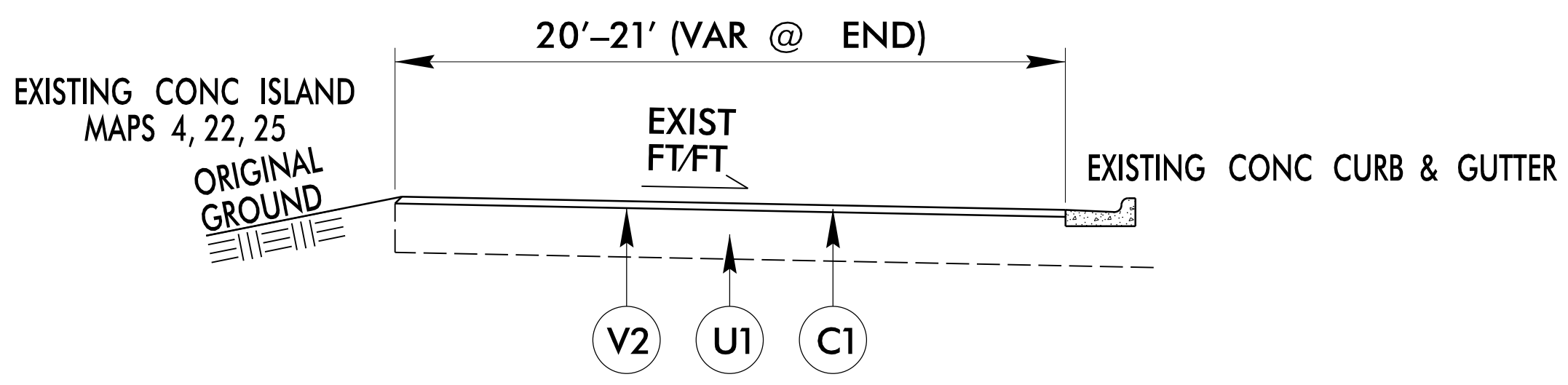
NOTE: PAVEMENT EDGE SLOPES ARE 1:1 UNLESS SHOWN OTHERWISE.



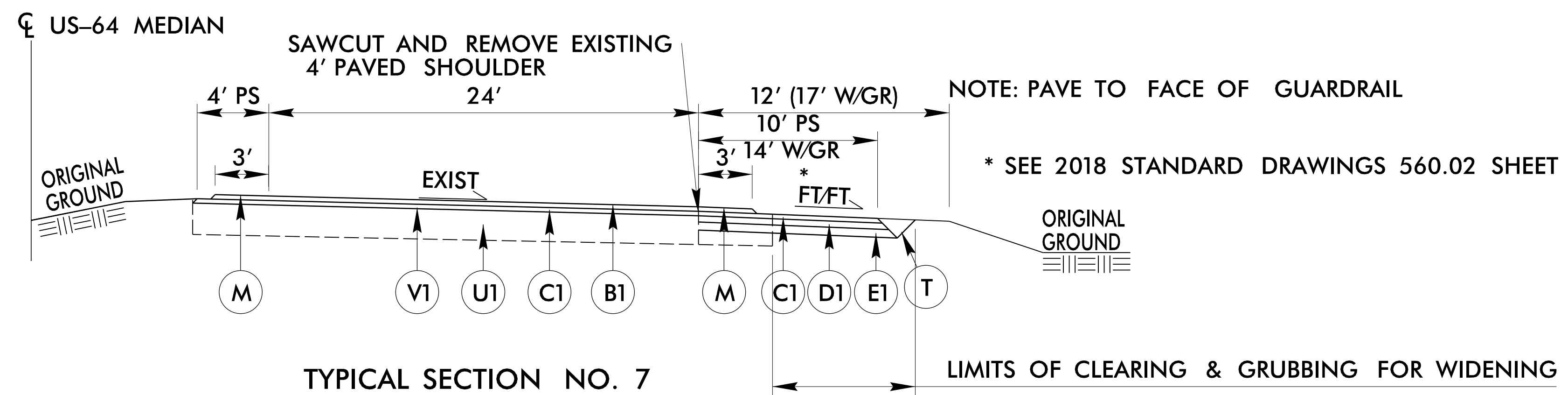
TYPICAL SECTION NO. 4  
US-64 @ I-95 CD LANE



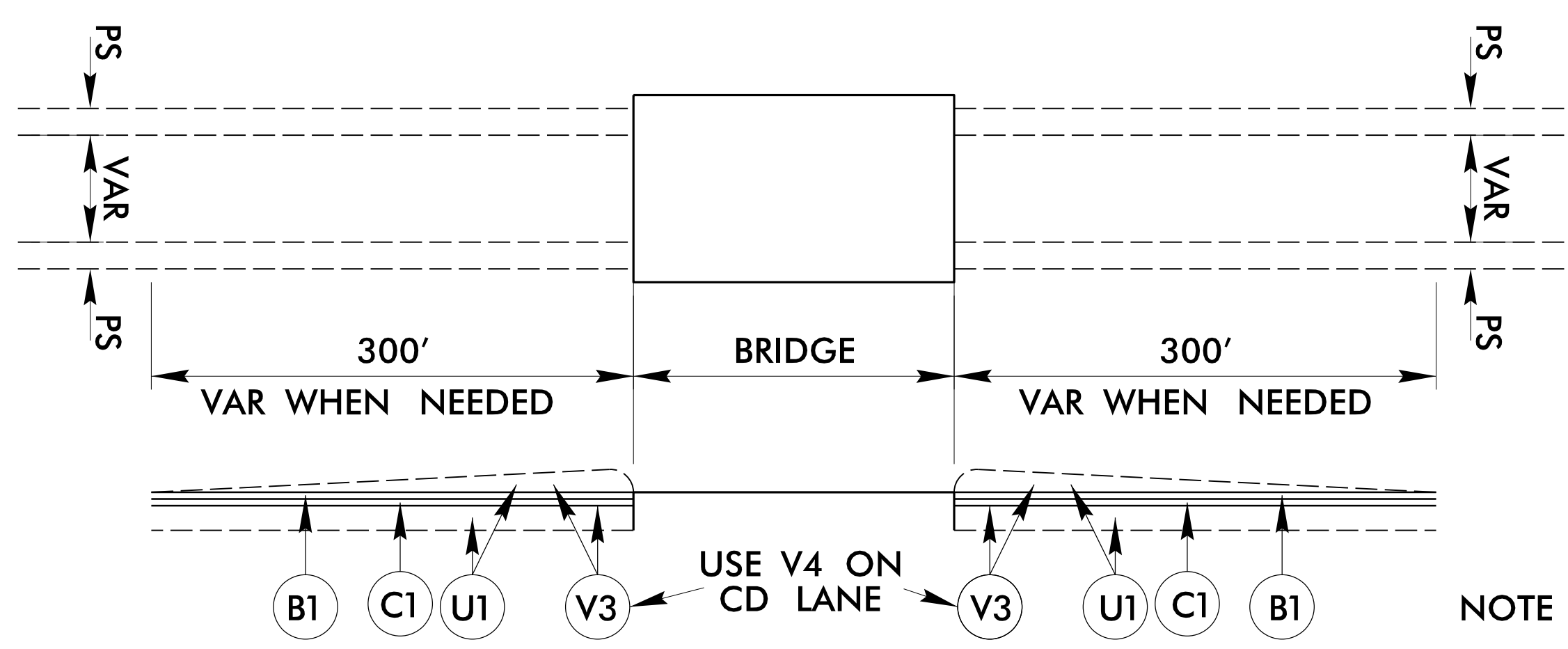
TYPICAL SECTION NO. 5  
RAMPS PAST GORE



TYPICAL SECTION NO. 6  
LOOPS PAST GORE



TYPICAL SECTION NO. 7  
US-64



US-64 MILLING AT BRIDGES TO IMPROVE GRADE

NOTE DO NOT MILL PAVED DITCH AT CD LANES

6/2/99

14-JUN-2022 15:42  
S:\BDC\I-6046\I-6046-ddc4\_TYP.dgn  
Division 4 DDC