
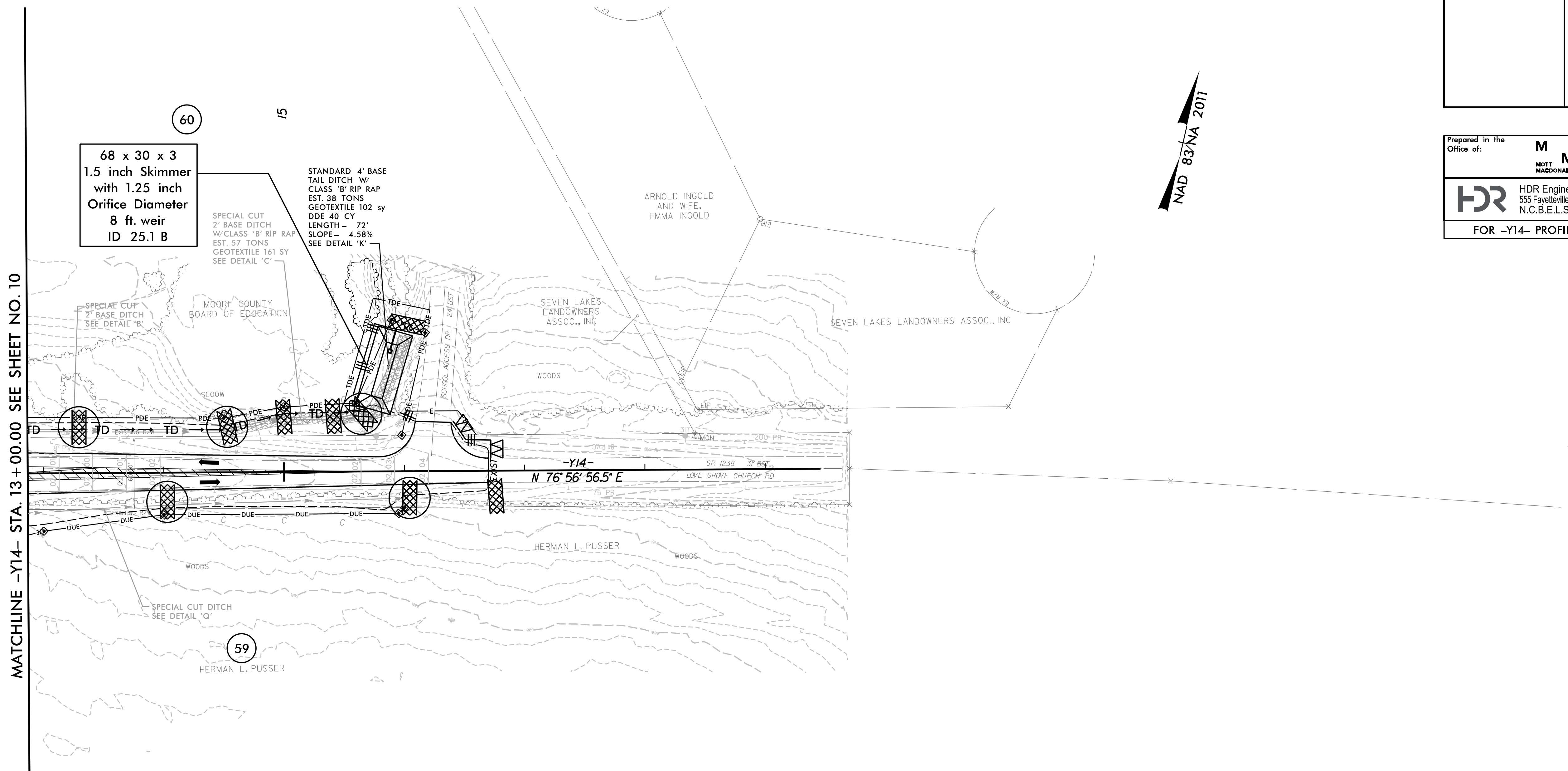


8/17/99

PROJECT REFERENCE NO. <b>R-5726A</b>	SHEET NO. <b>EC-25/CONST. 25</b>
ROADWAY DESIGN ENGINEER	HYDRAULICS ENGINEER

Prepared in the Office of:	<b>M</b> MOTT MACDONALD	PO Box 700 Fuquay-Varina, NC 27526 www.mottmac.com/americas
 <b>HDR</b> Engineering, Inc. of the Carolinas 555 Fayetteville St, Suite 900 Raleigh, N.C. 27601 N.C.B.E.L.S. License Number: F-0116		
FOR -Y14- PROFILE SEE SHEET 41		



68 x 30 x 3  
1.5 inch Skimmer  
with 1.25 inch  
Orifice Diameter  
8 ft. weir  
ID 25.1 B

SPECIAL CUT  
2' BASE DITCH  
W/CLASS 'B' RIP RAP  
EST. 57 TONS  
GEOTEXTILE 161 SY  
SEE DETAIL 'C'

STANDARD 4' BASE  
TAIL DITCH W/  
CLASS 'B' RIP RAP  
EST. 38 TONS  
GEOTEXTILE 102 sy  
DDE 40 CY  
LENGTH = 72'  
SLOPE = 4.58%  
SEE DETAIL 'K'

SPECIAL CUT  
2' BASE DITCH  
SEE DETAIL 'B'

MOORE COUNTY  
BOARD OF EDUCATION

SEVEN LAKES  
LANDOWNERS  
ASSOC., INC

SEVEN LAKES LANDOWNERS ASSOC., INC

HERMAN L. PUSSEY

HERMAN L. PUSSEY

CLEARING AND GRUBBING  
EROSION CONTROL FOR  
CONSTRUCTION SHEET 25

NOTE:  
PLACE TEMPORARY ROCK SEDIMENT DAMS TYPE - B  
AND TEMPORARY ROCK SILT CHECKS TYPE - A AT  
DRAINAGE OUTLETS.

2/17/2022  
R-5726-EC-PSH.dgn  
2:34:36 PM

ALL DRIVEWAY RADII ARE 10' UNLESS OTHERWISE NOTED ON PLANS.