

8/17/99

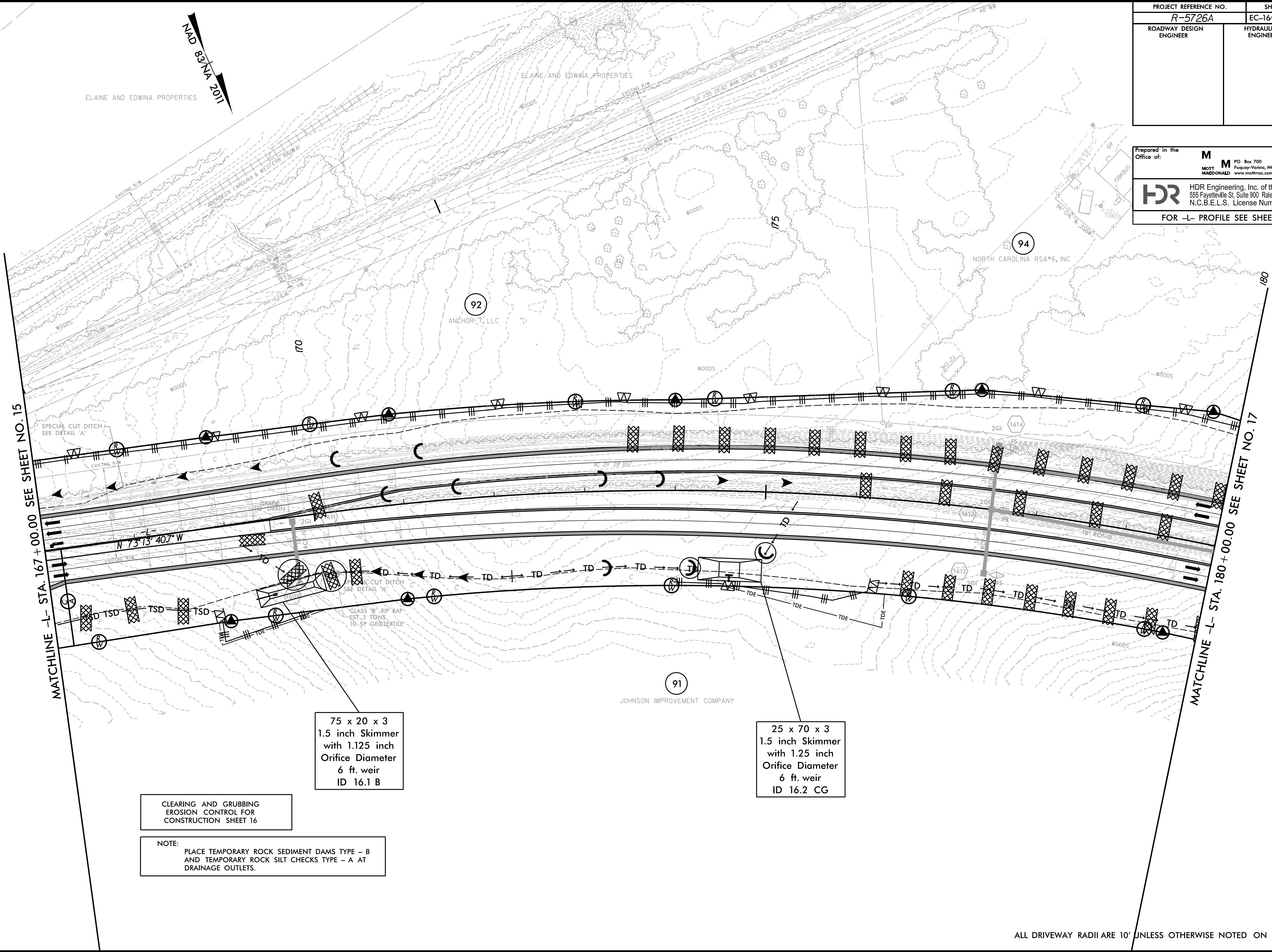
| | |
|---|-------------------------------------|
| PROJECT REFERENCE NO. R-5726A | SHEET NO. EC-16/CONST. 16 |
| ROADWAY DESIGN ENGINEER | HYDRAULICS ENGINEER |

Prepared in the Office of:

M MOTT MACDONALD
 PO Box 700
 Fuquay-Varina, NC 27526
 www.mottmac.com/americas

HDR HDR Engineering, Inc. of the Carolinas
 555 Fayetteville St, Suite 900 Raleigh, N.C. 27601
 N.C.B.E.L.S. License Number: F-0116

FOR -L- PROFILE SEE SHEET 33



MAD 83°VA 2011

ELAINE AND EDWINA PROPERTIES

ELAINE AND EDWINA PROPERTIES

92 ANCHOR 7, LLC

94 NORTH CAROLINA RSA#6, INC

91 JOHNSON IMPROVEMENT COMPANY

MATCHLINE -L- STA. 167 + 00.00 SEE SHEET NO. 15

MATCHLINE -L- STA. 180 + 00.00 SEE SHEET NO. 17

75 x 20 x 3
 1.5 inch Skimmer
 with 1.125 inch
 Orifice Diameter
 6 ft. weir
 ID 16.1 B

25 x 70 x 3
 1.5 inch Skimmer
 with 1.25 inch
 Orifice Diameter
 6 ft. weir
 ID 16.2 CG

CLEARING AND GRUBBING
 EROSION CONTROL FOR
 CONSTRUCTION SHEET 16

NOTE:
 PLACE TEMPORARY ROCK SEDIMENT DAMS TYPE - B
 AND TEMPORARY ROCK SILT CHECKS TYPE - A AT
 DRAINAGE OUTLETS.

2/17/2022
 5:24:36 PM
 5:24:36 PM
 EC_PSH.dgn

ALL DRIVEWAY RADII ARE 10' UNLESS OTHERWISE NOTED ON PLANS.