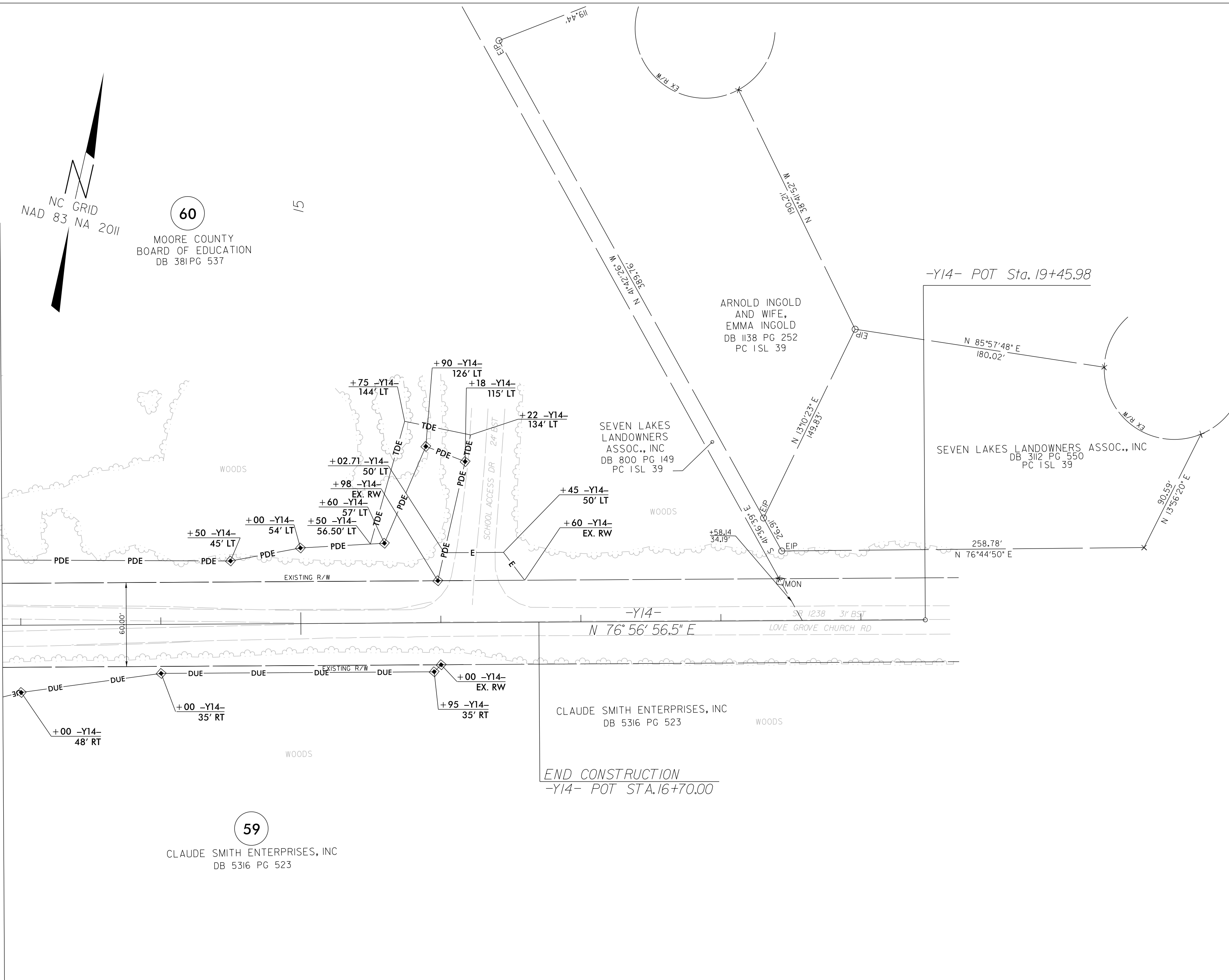


REVISIONS

MATCHLINE -Y14- STA. 13 + 00.00 SEE SHEET NO. 10



60
MOORE COUNTY
BOARD OF EDUCATION
DB 381 PG 537

59
CLAUDE SMITH ENTERPRISES, INC
DB 5316 PG 523

ARNOLD INGOLD
AND WIFE,
EMMA INGOLD
DB 1138 PG 252
PC 1SL 39

SEVEN LAKES
LANDOWNERS
ASSOC., INC
DB 800 PG 149
PC 1SL 39

SEVEN LAKES LANDOWNERS ASSOC., INC
DB 312 PG 550
PC 1SL 39

CLAUDE SMITH ENTERPRISES, INC
DB 5316 PG 523

END CONSTRUCTION
-Y14- POT STA.16+70.00

I, C. Andrew Heath, Jr., certify that the right of way and permanent easement monumentation for this project shown herein was completed under my direct and responsible charge from an actual survey made under my supervision; that all horizontal closures had a minimum ratio of precision of 1:10,000 (Class A). Field work was performed from 11/03/2021 to 03/11/2022, and all coordinates are based on NAD83/2011; That this survey was performed to meet the requirements of 21NCAC 56.1600 as applicable.

This 14th day of March, 2022.

C. Andrew Heath, Jr.
Professional Land Surveyor L-3281

PROJECT REFERENCE NO.	SHEET NO.
R-5726	RW25

Location and Surveys

NV5

NV5 ENGINEERS & CONSULTANTS, INC.
3300 REGENCY PARKWAY, SUITE 100
CARY, NC 27518
P: 919.851.1912 www.NV5.com

PROJECT SURVEYOR



DOCUMENT NOT CONSIDERED FINAL
UNLESS ALL SIGNATURES COMPLETED

NOTES:

1. IF FURTHER INFORMATION REGARDING PROJECT CONTROL IS NEEDED PLEASE CONTACT THE LOCATION AND SURVEYS UNIT.
2. PROJECT CONTROL WAS ESTABLISHED USING GNSS, THE GLOBAL NAVIGATION SATELLITE SYSTEM.
3. RIGHT OF WAY MONUMENTATION ESTABLISHED NOVEMBER 2021 TO MARCH 2022 .