

Location and Surveys

NV5

NV5 ENGINEERS & CONSULTANTS, INC.
3300 REGENCY PARKWAY, SUITE 100
CARR, NC 27518
P: 919.851.1912 www.NV5.com

PROJECT SURVEYOR

DOCUMENT NOT CONSIDERED FINAL
UNLESS ALL SIGNATURES COMPLETED

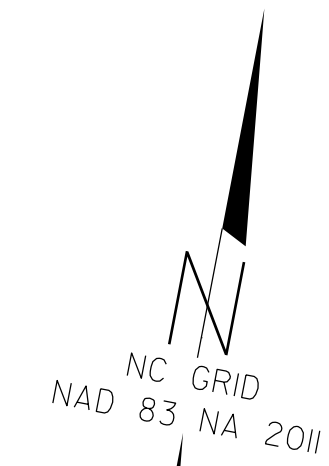
I, C. Andrew Heath, Jr., certify that the right of way and permanent easement monumentation for this project shown herein was completed under my direct and responsible charge from an actual survey made under my supervision; that all horizontal closures had a minimum ratio of precision of 1:10,000 (Class A). Field work was performed from 11/03/2021 to 03/11/2022, and all coordinates are based on NAD83/2011; That this survey was performed to meet the requirements of 21NCAC 56.1600 as applicable.

This 14th day of March, 2022.

Delegated by:
C. Andrew Heath, Jr.
Professional Land Surveyor L-3281

-Y4-

PI Sta. 21+13.71
Δ = 0° 54' 03.3" (RT)
D = 0° 16' 31.0"
L = 327.26'
T = 163.64'
R = 20,813.01'



RICHARD A. COWLEY, SR.
AND WIFE,
DIANE J. COWLEY
DB 4054 PG 427
PC 15 SL 683

LARRY WAYNE ATKINS
DB 2451 PG 443
MB 2A PG 88

LINDA R. CARPENTER
ESTATE FILE 2016 E 147
MB 2A PG 88

NYMPIE EDGERTON GORDON
DB 596 PG 164
MB 2A PG 88

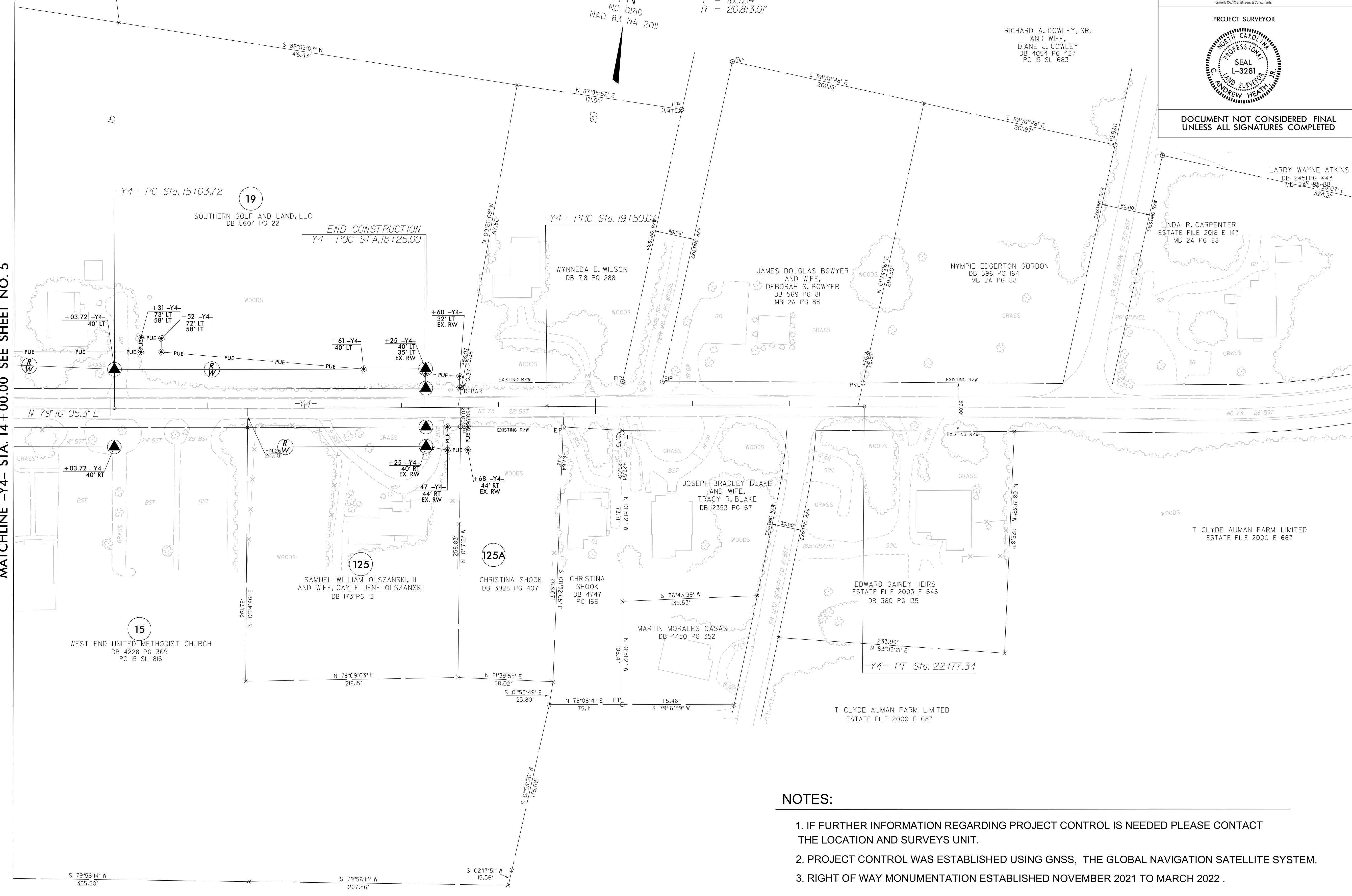
JAMES DOUGLAS BOWYER
AND WIFE,
DEBORAH S. BOWYER
DB 569 PG 81
MB 2A PG 88

WYNNEA E. WILSON
DB 718 PG 288

END CONSTRUCTION
-Y4- POC STA.18+25.00

SOUTHERN GOLF AND LAND, LLC
DB 5604 PG 221

MATCHLINE -Y4- STA. 14 + 00.00 SEE SHEET NO. 5



NOTES:

1. IF FURTHER INFORMATION REGARDING PROJECT CONTROL IS NEEDED PLEASE CONTACT THE LOCATION AND SURVEYS UNIT.
2. PROJECT CONTROL WAS ESTABLISHED USING GNSS, THE GLOBAL NAVIGATION SATELLITE SYSTEM.
3. RIGHT OF WAY MONUMENTATION ESTABLISHED NOVEMBER 2021 TO MARCH 2022 .

REVISIONS

14-MAR-2022 09:11
 G:\Projects\2021\2021014.73\SURV\w_sheets\5726_1s_rw24.dgn
 AT NCCAP-GRANS100
 scott@anford