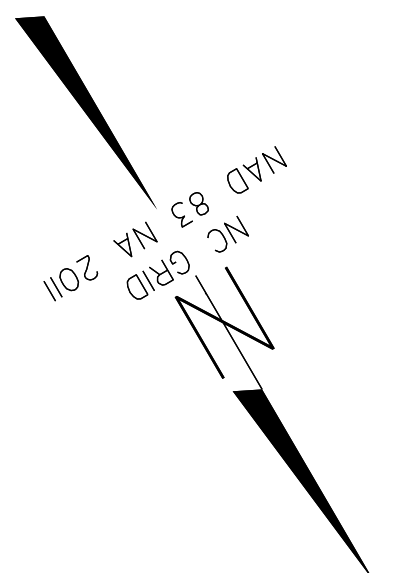
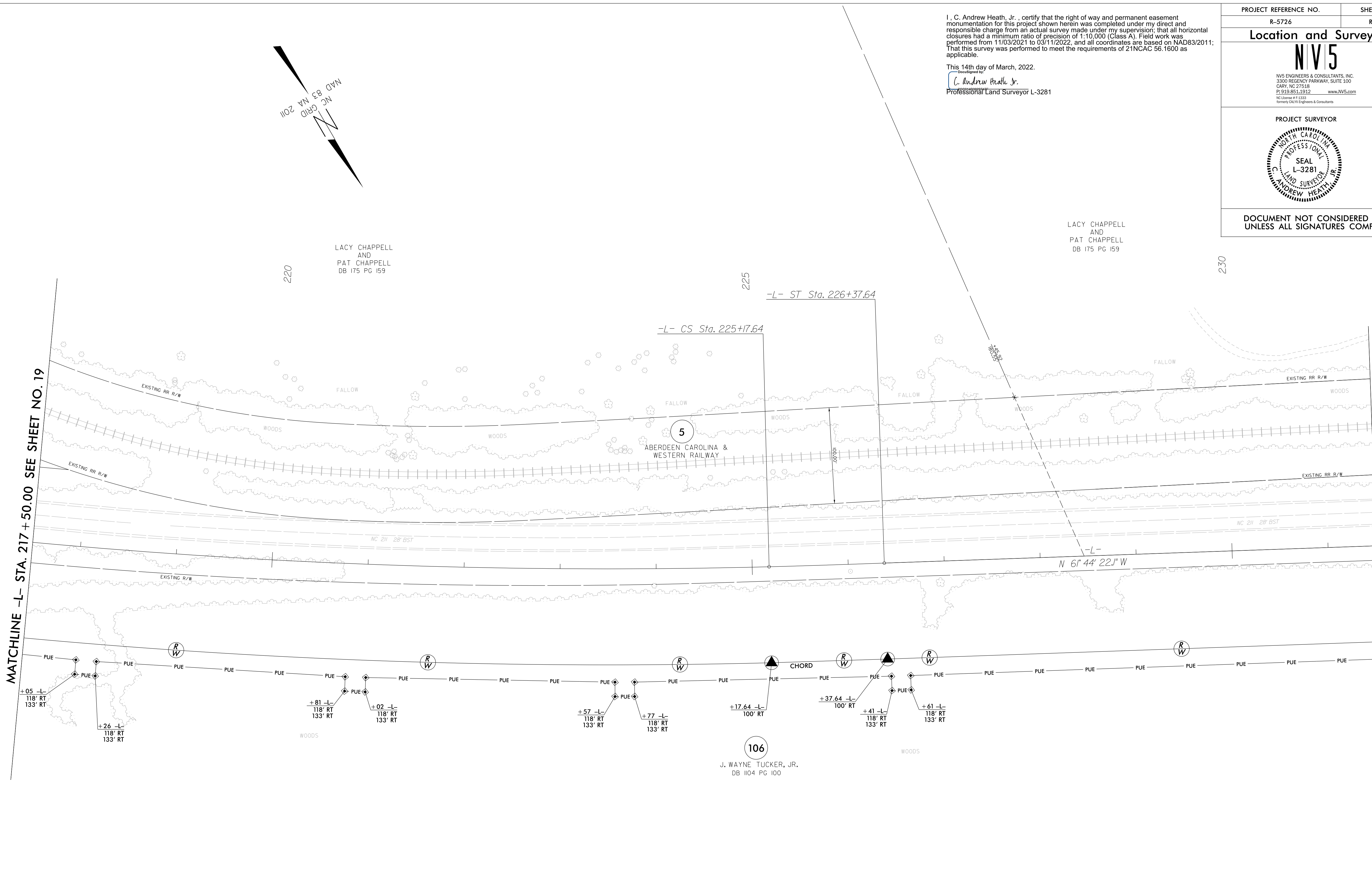


REVISIONS

14-MAR-2022 08:52
G:\Projects\2021\14-73\SURV\w_sheets\5726_1s.rvt.dgn
scott@carolina.com

MATCHLINE -L- STA. 217 +50.00 SEE SHEET NO. 19

MATCHLINE -L- STA. 231 +50.00 SEE SHEET NO. 21


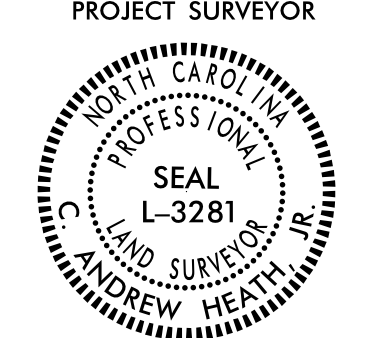


LACY CHAPPELL
AND
PAT CHAPPELL
DB 175 PG 159

LACY CHAPPELL
AND
PAT CHAPPELL
DB 175 PG 159

I, C. Andrew Heath, Jr., certify that the right of way and permanent easement monumentation for this project shown herein was completed under my direct and responsible charge from an actual survey made under my supervision; that all horizontal closures had a minimum ratio of precision of 1:10,000 (Class A). Field work was performed from 11/03/2021 to 03/11/2022, and all coordinates are based on NAD83/2011; That this survey was performed to meet the requirements of 21NCAC 56.1600 as applicable.

This 14th day of March, 2022.
C. Andrew Heath Jr.
Professional Land Surveyor L-3281

PROJECT REFERENCE NO. R-5726	SHEET NO. RW20
Location and Surveys	
 NV5 ENGINEERS & CONSULTANTS, INC. 3300 REGENCY PARKWAY, SUITE 100 GARY, NC 27518 P: 919.851.1912 www.NV5.com <small>NC License # F-1333 Member: I.C.A.N. Engineers & Consultants</small>	
PROJECT SURVEYOR 	
DOCUMENT NOT CONSIDERED FINAL UNLESS ALL SIGNATURES COMPLETED	

-L-

PI Sta 220+57.12	PIs Sta 225+57.64
$\Delta = 8^{\circ} 07' 56.7" (LT)$	$\Theta_s = 0^{\circ} 31' 44.0"$
$D = 0^{\circ} 52' 53.3"$	$L_s = 120.00'$
$L = 922.59'$	$LT = 80.00'$
$T = 462.07'$	$ST = 40.00'$
$R = 6,500.00'$	
$SE = 0.03$	
$RO = 120'$	

NOTES:

1. IF FURTHER INFORMATION REGARDING PROJECT CONTROL IS NEEDED PLEASE CONTACT THE LOCATION AND SURVEYS UNIT.
2. PROJECT CONTROL WAS ESTABLISHED USING GNSS, THE GLOBAL NAVIGATION SATELLITE SYSTEM.
3. RIGHT OF WAY MONUMENTATION ESTABLISHED NOVEMBER 2021 TO MARCH 2022 .