

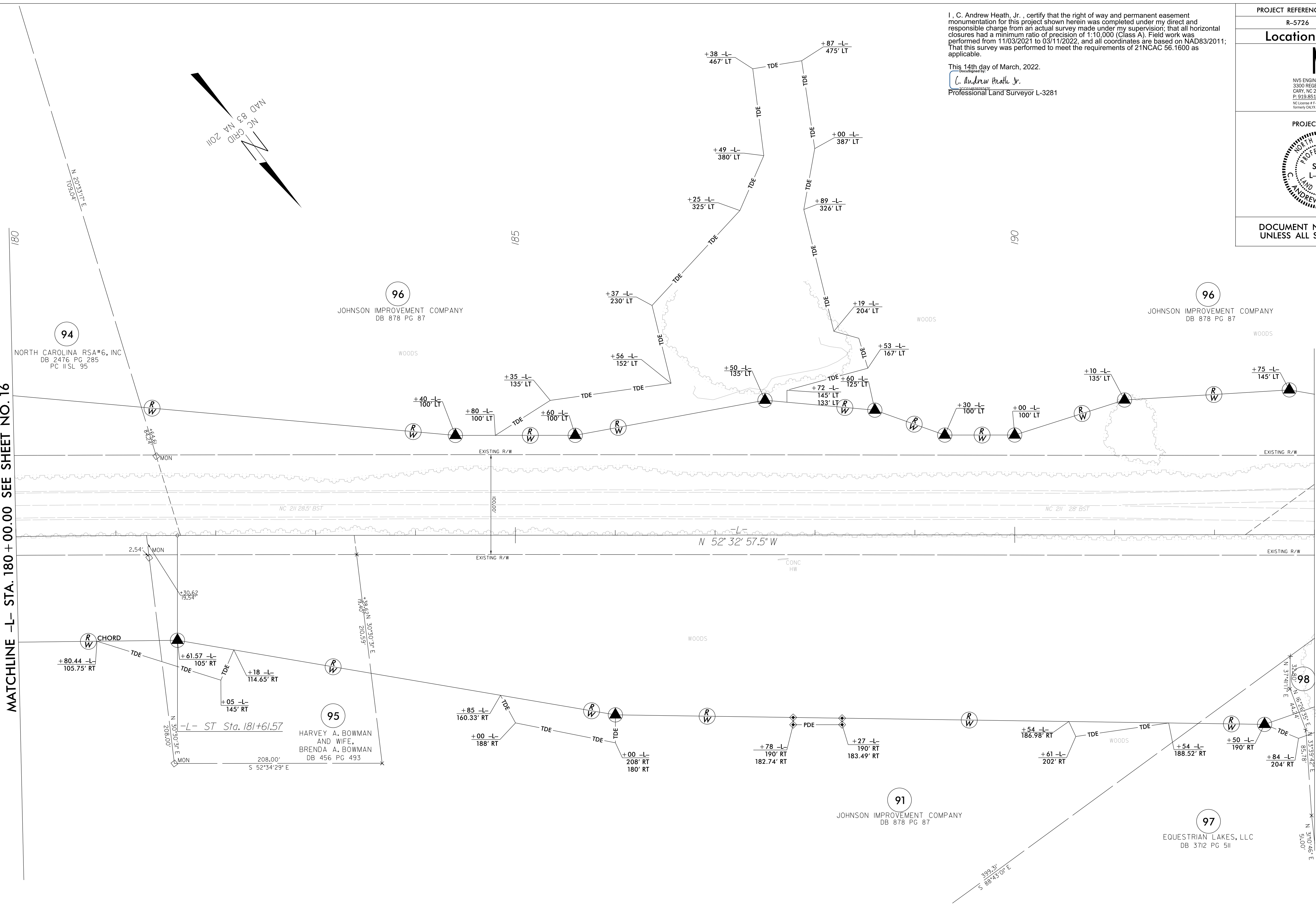
6/2/09

REVISIONS

14-MAR-2022 08:43
C:\p1601\2021\2021014_73_SURV\w_sheets\5726_1s.rwl.dgn
scott@enford.com
AT NCCAP-GRANS100

MATCHLINE -L- STA. 180 + 00.00 SEE SHEET NO. 16


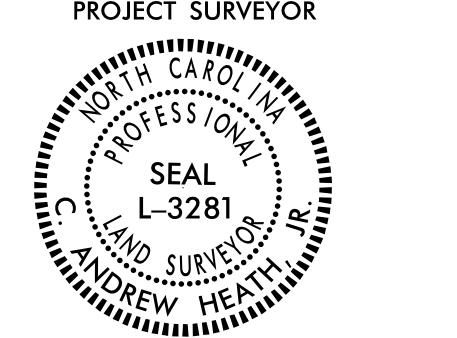
MATCHLINE -L- STA. 193 + 00.00 SEE SHEET NO. 18



-L-
 Pls Sta 180+28.24
 $\theta_s = 1^{\circ} 56' 08.4''$
 $L_s = 200.00'$
 $LT = 133.34'$
 $ST = 66.67'$

I, C. Andrew Heath, Jr., certify that the right of way and permanent easement monumentation for this project shown herein was completed under my direct and responsible charge from an actual survey made under my supervision, that all horizontal closures had a minimum ratio of precision of 1:10,000 (Class A). Field work was performed from 11/03/2021 to 03/11/2022, and all coordinates are based on NAD83/2011; That this survey was performed to meet the requirements of 21NCAC 56.1600 as applicable.

This 14th day of March, 2022.
 C. Andrew Heath, Jr.
 Professional Land Surveyor L-3281

PROJECT REFERENCE NO. R-5726	SHEET NO. RW17
Location and Surveys	
 NVIS ENGINEERS & CONSULTANTS, INC. 3300 REGENCY PARKWAY, SUITE 100 CHAR, NC 27218 P. 919.851.1912 www.nvis.com <small>NC License # F-1333 Member, NCEES Engineers & Consultants</small>	
PROJECT SURVEYOR 	
DOCUMENT NOT CONSIDERED FINAL UNLESS ALL SIGNATURES COMPLETED	

NOTES:

1. IF FURTHER INFORMATION REGARDING PROJECT CONTROL IS NEEDED PLEASE CONTACT THE LOCATION AND SURVEYS UNIT.
2. PROJECT CONTROL WAS ESTABLISHED USING GNSS, THE GLOBAL NAVIGATION SATELLITE SYSTEM.
3. RIGHT OF WAY MONUMENTATION ESTABLISHED NOVEMBER 2021 TO MARCH 2022 .