


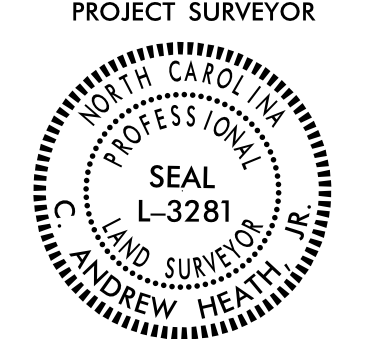
REVISIONS

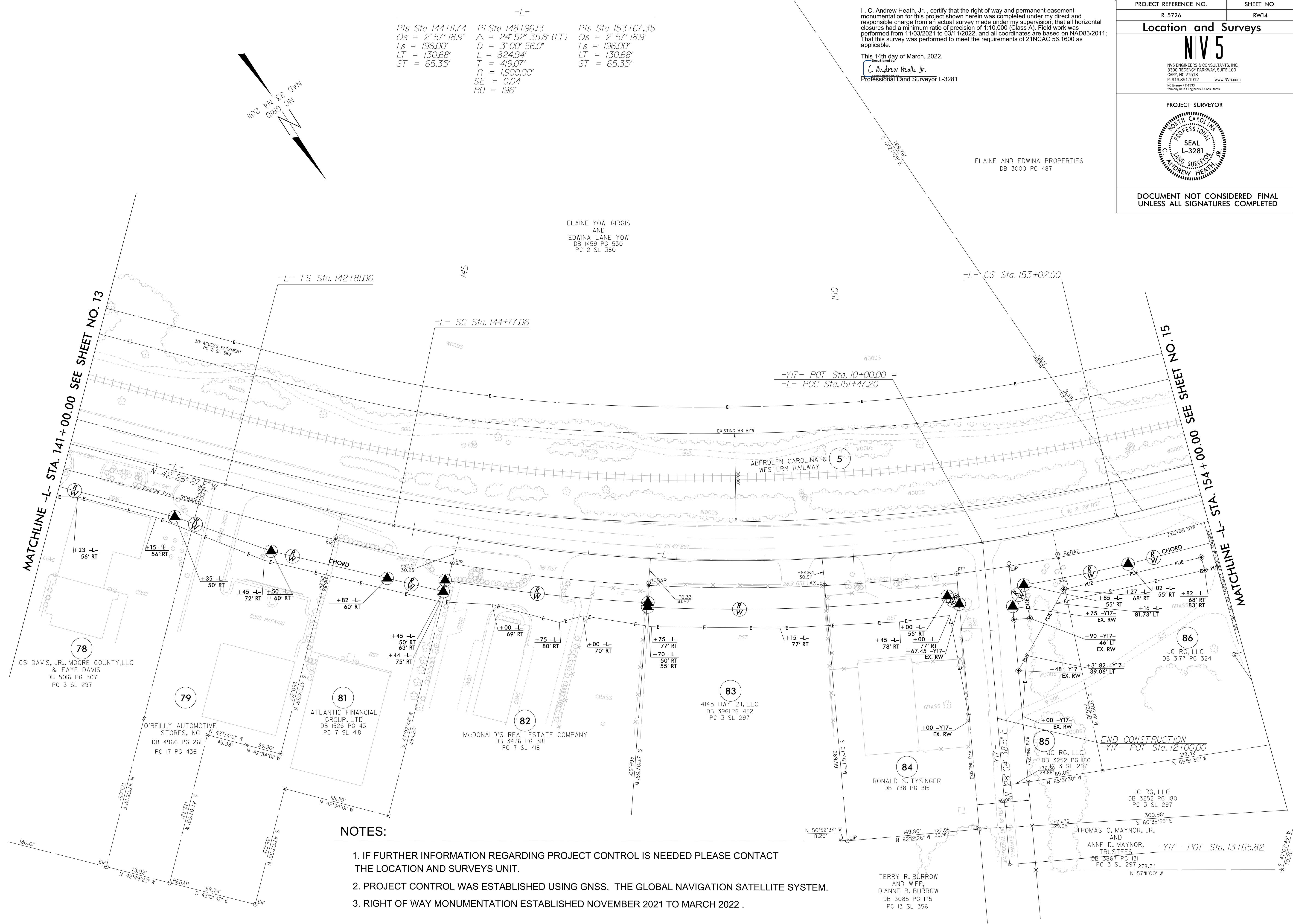
-L-

Pls Sta 144+11.74	PI Sta 148+96.13	Pls Sta 153+67.35
$\Theta_s = 2^\circ 57' 18.9''$	$\Delta = 24^\circ 52' 35.6''$ (LT)	$\Theta_s = 2^\circ 57' 18.9''$
$L_s = 196.00'$	$D = 3^\circ 00' 56.0''$	$L_s = 196.00'$
$LT = 130.68'$	$L = 824.94'$	$LT = 130.68'$
$ST = 65.35'$	$T = 419.07'$	$ST = 65.35'$
	$R = 1,900.00'$	
	$SE = 0.04$	
	$RO = 196'$	

I, C. Andrew Heath, Jr., certify that the right of way and permanent easement monumentation for this project shown herein was completed under my direct and responsible charge from an actual survey made under my supervision; that all horizontal closures had a minimum ratio of precision of 1:10,000 (Class A). Field work was performed from 11/03/2021 to 03/11/2022, and all coordinates are based on NAD83/2011; That this survey was performed to meet the requirements of 21NCAC 56.1600 as applicable.

This 14th day of March, 2022.
 C. Andrew Heath, Jr.
 Professional Land Surveyor L-3281

PROJECT REFERENCE NO. R-5726	SHEET NO. RW14
Location and Surveys	
 NV5 ENGINEERS & CONSULTANTS, INC. 3300 REGENCY PARKWAY, SUITE 100 GARY, NC 27518 P: 919.851.1912 www.NV5.com <small>NC License # F-1333 formerly C&A Engineers & Consultants</small>	
PROJECT SURVEYOR	
	
DOCUMENT NOT CONSIDERED FINAL UNLESS ALL SIGNATURES COMPLETED	



NOTES:

1. IF FURTHER INFORMATION REGARDING PROJECT CONTROL IS NEEDED PLEASE CONTACT THE LOCATION AND SURVEYS UNIT.
2. PROJECT CONTROL WAS ESTABLISHED USING GNSS, THE GLOBAL NAVIGATION SATELLITE SYSTEM.
3. RIGHT OF WAY MONUMENTATION ESTABLISHED NOVEMBER 2021 TO MARCH 2022 .

ELAINE AND EDWINA PROPERTIES
DB 3000 PG 487

ELAINE YOW GIRGIS
AND
EDWINA LANE YOW
DB 1459 PG 530
PC 2 SL 380

ABERDEEN CAROLINA &
WESTERN RAILWAY

78
CS DAVIS, JR., MOORE COUNTY, LLC
& FAYE DAVIS
DB 5016 PG 307
PC 3 SL 297

79
O'REILLY AUTOMOTIVE
STORES, INC
DB 4966 PG 261
PC 17 PG 436

81
ATLANTIC FINANCIAL
GROUP, LTD
DB 1526 PG 43
PC 7 SL 418

82
MCDONALD'S REAL ESTATE COMPANY
DB 3476 PG 381
PC 7 SL 418

83
4145 HWY 211, LLC
DB 3961 PG 452
PC 3 SL 297

84
RONALD S. TYSINGER
DB 738 PG 315

85
JC RG, LLC
DB 3252 PG 180
PC 3 SL 297

86
JC RG, LLC
DB 3177 PG 324

JC RG, LLC
DB 3252 PG 180
PC 3 SL 297

THOMAS C. MAYNOR, JR.
AND
ANNE D. MAYNOR,
TRUSTEES
DB 3867 PG 131
PC 3 SL 297 278.71'
N 57°1'00" W

TERRY R. BURROW
AND WIFE,
DIANNE B. BURROW
DB 3085 PG 175
PC 13 SL 356