

Location and Surveys



PROJECT SURVEYOR  
DOCUMENT NOT CONSIDERED FINAL UNLESS ALL SIGNATURES COMPLETED

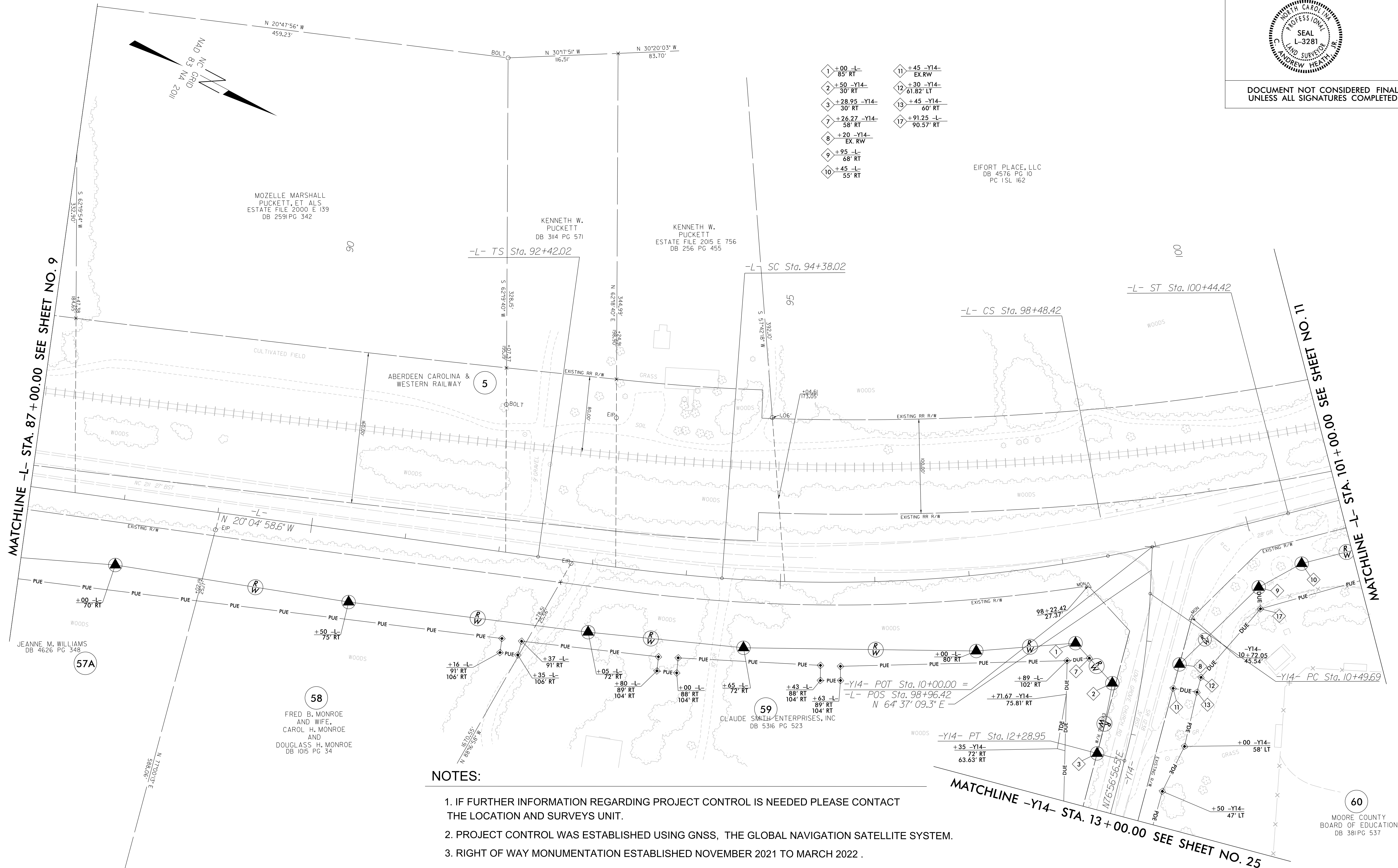
I, C. Andrew Heath, Jr., certify that the right of way and permanent easement monumentation for this project shown herein was completed under my direct and responsible charge from an actual survey made under my supervision; that all horizontal closures had a minimum ratio of precision of 1:10,000 (Class A). Field work was performed from 11/03/2021 to 03/11/2022, and all coordinates are based on NAD83/2011; That this survey was performed to meet the requirements of 21NCAC 56.1600 as applicable.

This 14th day of March, 2022.  
C. Andrew Heath, Jr.  
Professional Land Surveyor L-3281

-L-		-Y14-	
PIs Sta 93+72.72	PI Sta 96+44.42	PI Sta 99+13.78	PI Sta 11+39.67
$\Theta_s = 3^\circ 36' 47.7''$	$\Delta = 15^\circ 07' 53.3''$ (LT)	$\Theta_s = 3^\circ 36' 47.7''$	$\Delta = 12^\circ 19' 47.2''$ (RT)
$L_s = 196.00'$	$D = 3^\circ 41' 13.2''$	$L_s = 196.00'$	$D = 6^\circ 52' 41.7''$
$LT = 130.69'$	$L = 410.40'$	$LT = 130.69'$	$L = 179.26'$
$ST = 65.36'$	$T = 206.40'$	$ST = 65.36'$	$T = 89.98'$
	$R = 1,554.00'$		$R = 833.00'$
	$SE = 0.04$		
	$RO = 196'$		

- 1 +00 -L- 85' RT
- 2 +50 -Y14- 30' RT
- 3 +28.95 -Y14- 30' RT
- 7 +26.27 -Y14- 58' RT
- 8 +20 -Y14- EX. RW
- 9 +95 -L- 68' RT
- 10 +45 -L- 55' RT
- 11 +45 -Y14- EX. RW
- 12 +30 -Y14- 61.82' LT
- 13 +45 -Y14- 60' RT
- 17 +91.25 -L- 90.57' RT

EIFORT PLACE, LLC  
DB 4576 PG 10  
PC 1 SL 162



NOTES:

- IF FURTHER INFORMATION REGARDING PROJECT CONTROL IS NEEDED PLEASE CONTACT THE LOCATION AND SURVEYS UNIT.
- PROJECT CONTROL WAS ESTABLISHED USING GNSS, THE GLOBAL NAVIGATION SATELLITE SYSTEM.
- RIGHT OF WAY MONUMENTATION ESTABLISHED NOVEMBER 2021 TO MARCH 2022.

REVISIONS

MATCHLINE -L- STA. 87 + 00.00 SEE SHEET NO. 9

MATCHLINE -L- STA. 101 + 00.00 SEE SHEET NO. 11

MATCHLINE -Y14- STA. 13 + 00.00 SEE SHEET NO. 25

14-MAR-2022 08:05  
C:\p16\cck\2021\2021014\_73\_SURV\w\_sheets\R-5726\1s\_r\10.dgn  
scott@cranford.com

57A

58

59

60

MOORE COUNTY BOARD OF EDUCATION  
DB 381 PG 537