

Location and Surveys

NV5

NV5 ENGINEERS & CONSULTANTS, INC.  
3300 REGENCY PARKWAY, SUITE 100  
CARY, NC 27518  
P 919.851.1912 www.NV5.com

PROJECT SURVEYOR

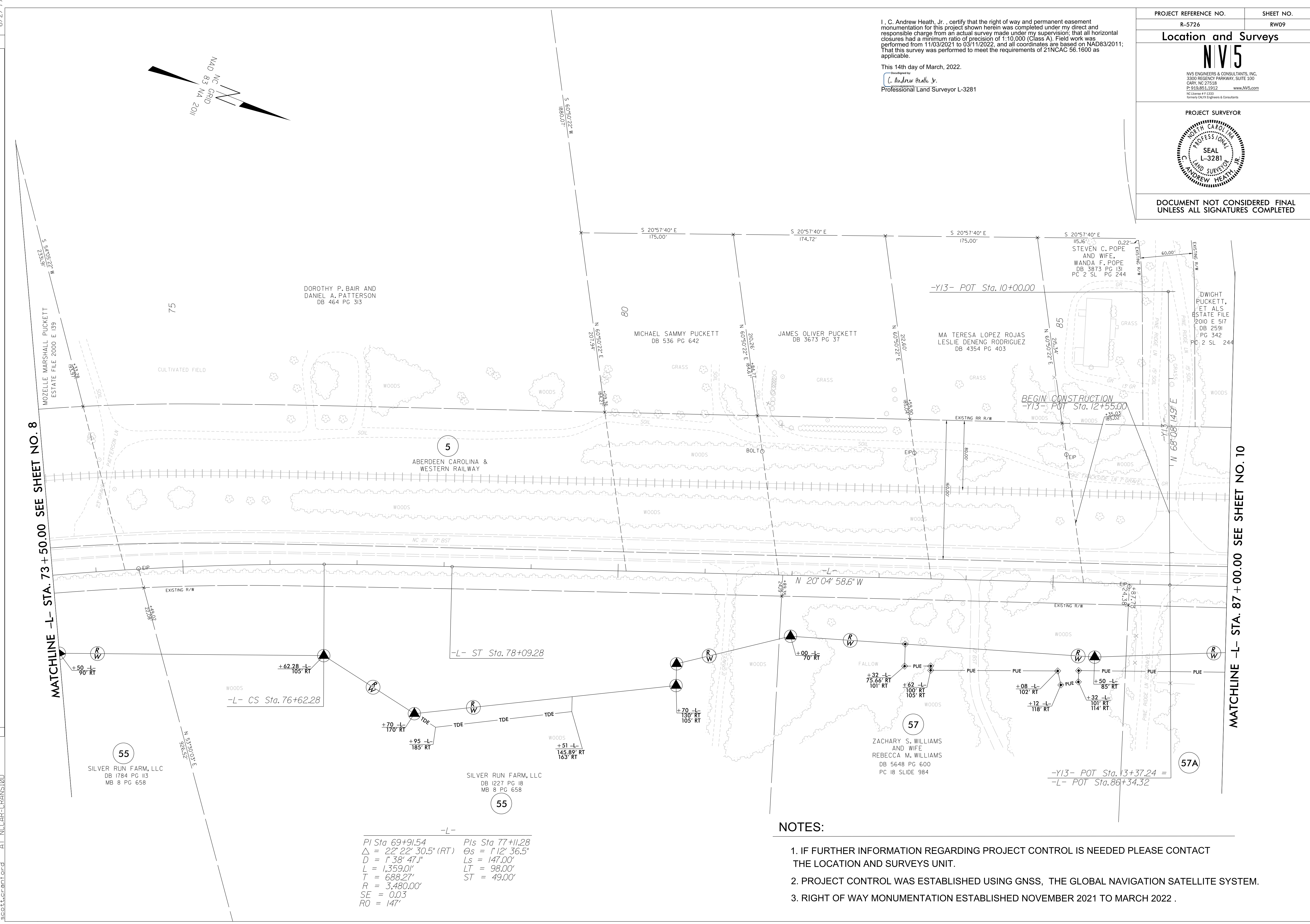


DOCUMENT NOT CONSIDERED FINAL UNLESS ALL SIGNATURES COMPLETED

I, C. Andrew Heath, Jr., certify that the right of way and permanent easement monumentation for this project shown herein was completed under my direct and responsible charge from an actual survey made under my supervision; that all horizontal closures had a minimum ratio of precision of 1:10,000 (Class A). Field work was performed from 11/03/2021 to 03/11/2022, and all coordinates are based on NAD83/2011; that this survey was performed to meet the requirements of 21NCAC 56.1600 as applicable.

This 14th day of March, 2022.  
Designed by:  
C. Andrew Heath, Jr.  
Professional Land Surveyor L-3281

REVISIONS  
REVISIONS



MATCHLINE -L- STA. 73 + 50.00 SEE SHEET NO. 8

MATCHLINE -L- STA. 87 + 00.00 SEE SHEET NO. 10

-L-  
PI Sta 69+91.54      PIs Sta 77+11.28  
Δ = 22° 22' 30.5" (RT)      Θs = 1° 12' 36.5"  
D = 1' 38' 47.1"      Ls = 147.00'  
L = 1,359.01'      LT = 98.00'  
T = 688.27'      ST = 49.00'  
R = 3,480.00'  
SE = 0.03  
RO = 147'

NOTES:

- 1. IF FURTHER INFORMATION REGARDING PROJECT CONTROL IS NEEDED PLEASE CONTACT THE LOCATION AND SURVEYS UNIT.
- 2. PROJECT CONTROL WAS ESTABLISHED USING GNSS, THE GLOBAL NAVIGATION SATELLITE SYSTEM.
- 3. RIGHT OF WAY MONUMENTATION ESTABLISHED NOVEMBER 2021 TO MARCH 2022.

14-MAR-2022 07:57  
C:\p16\2021\2021014\_73\_SILVER\_FARM\_sheets\5726\_1s\_r\03.dgn  
scott@penford  
AT NCCAP-GRANS100