

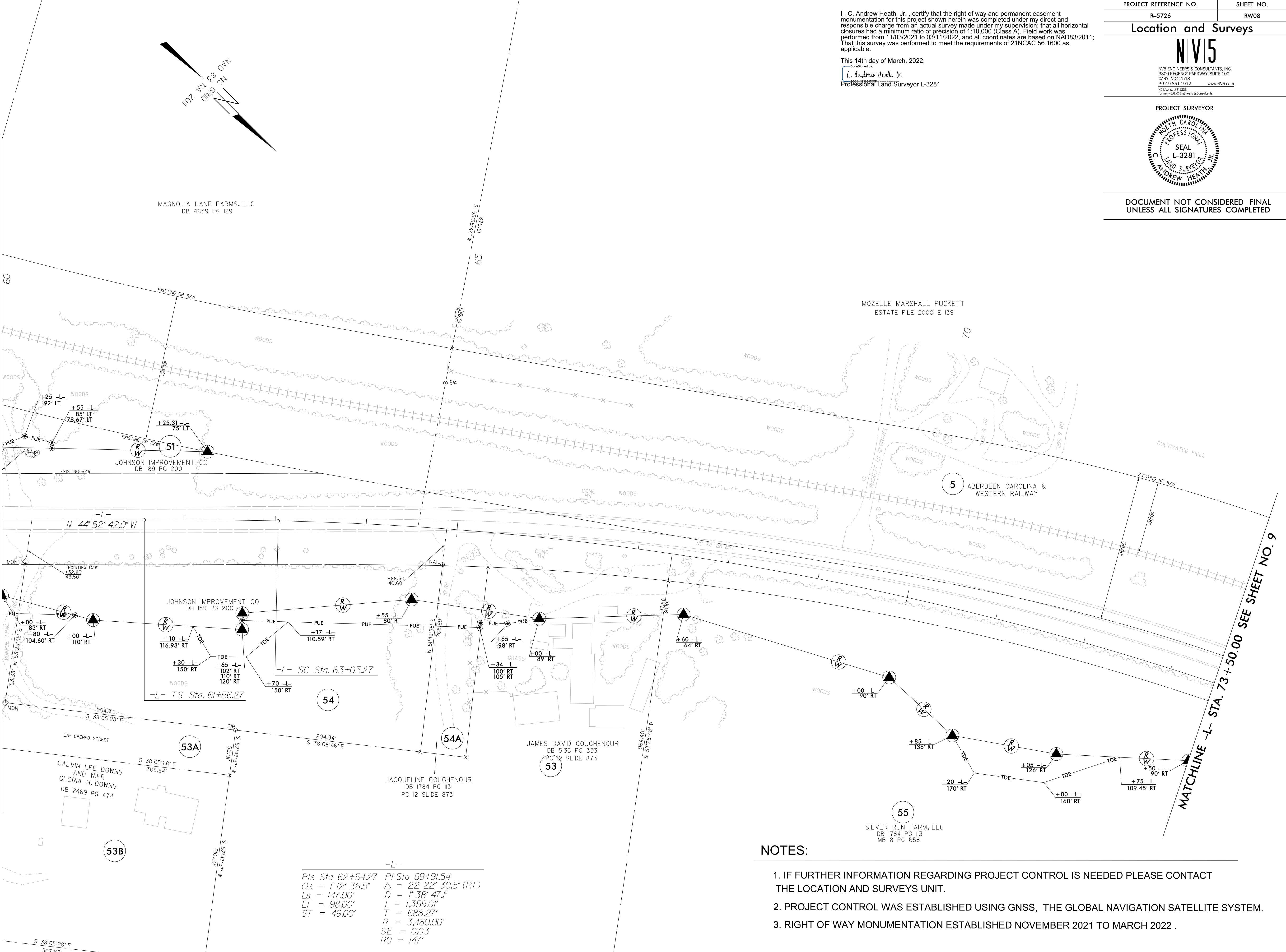
6/2/09

REVISIONS

14-MAR-2022 07:52
C:\p\6\2021\2021014_73_SURV\w_sheets\5726_1s_r\08.dgn
scott@cranford.com

MATCHLINE -L- STA. 60 + 00.00 SEE SHEET NO. 7


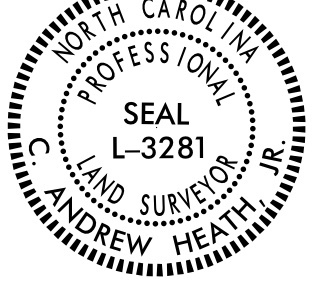
MATCHLINE -L- STA. 73 + 50.00 SEE SHEET NO. 9



I, C. Andrew Heath, Jr., certify that the right of way and permanent easement monumentation for this project shown herein was completed under my direct and responsible charge from an actual survey made under my supervision; that all horizontal closures had a minimum ratio of precision of 1:10,000 (Class A). Field work was performed from 11/03/2021 to 03/11/2022, and all coordinates are based on NAD83/2011; That this survey was performed to meet the requirements of 21NCAC 56.1600 as applicable.

This 14th day of March, 2022.

Designed by:
C. Andrew Heath, Jr.
Professional Land Surveyor L-3281

PROJECT REFERENCE NO. R-5726	SHEET NO. RW08
Location and Surveys	
 NV5 NV5 ENGINEERS & CONSULTANTS, INC. 3300 REGENCY PARKWAY, SUITE 100 CARY, NC 27518 P. 919.851.1912 www.NV5.com <small>NC License # F 1333 Formerly CACI Engineers & Consultants</small>	
PROJECT SURVEYOR	
	
DOCUMENT NOT CONSIDERED FINAL UNLESS ALL SIGNATURES COMPLETED	

NOTES:

1. IF FURTHER INFORMATION REGARDING PROJECT CONTROL IS NEEDED PLEASE CONTACT THE LOCATION AND SURVEYS UNIT.
2. PROJECT CONTROL WAS ESTABLISHED USING GNSS, THE GLOBAL NAVIGATION SATELLITE SYSTEM.
3. RIGHT OF WAY MONUMENTATION ESTABLISHED NOVEMBER 2021 TO MARCH 2022 .

-L-
 PIs Sta 62+54.27 PI Sta 69+91.54
 $\theta_s = 1' 12'' 36.5''$ $\Delta = 22' 22'' 30.5''$ (RT)
 $L_s = 147.00'$ $D = 1' 38'' 47.1''$
 $LT = 98.00'$ $L = 1,359.01'$
 $ST = 49.00'$ $T = 688.27'$
 $R = 3,480.00'$
 $SE = 0.03$
 $RO = 147'$