

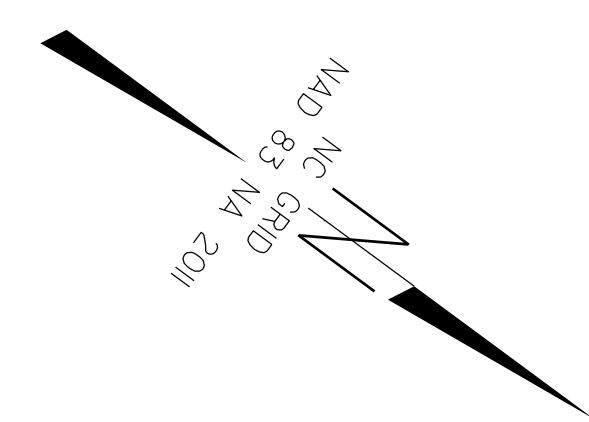
PROJECT REFERENCE NO.	SHEET NO.
R-5726	RW07
Location and Surveys	
NV5	
<small>NV5 ENGINEERS & CONSULTANTS, INC. 3300 REGENCY PARKWAY, SUITE 100 CARR, NC 27518 P: 919.851.1912 www.NV5.com NC License # P-1239 formerly CIVIL Engineers & Consultants</small>	
PROJECT SURVEYOR	
DOCUMENT NOT CONSIDERED FINAL UNLESS ALL SIGNATURES COMPLETED	

I, C. Andrew Heath, Jr., certify that the right of way and permanent easement monumentation for this project shown herein was completed under my direct and responsible charge from an actual survey made under my supervision; that all horizontal closures had a minimum ratio of precision of 1:10,000 (Class A). Field work was performed from 11/03/2021 to 03/11/2022, and all coordinates are based on NAD83/2011; That this survey was performed to meet the requirements of 21NCAC 56.1600 as applicable.

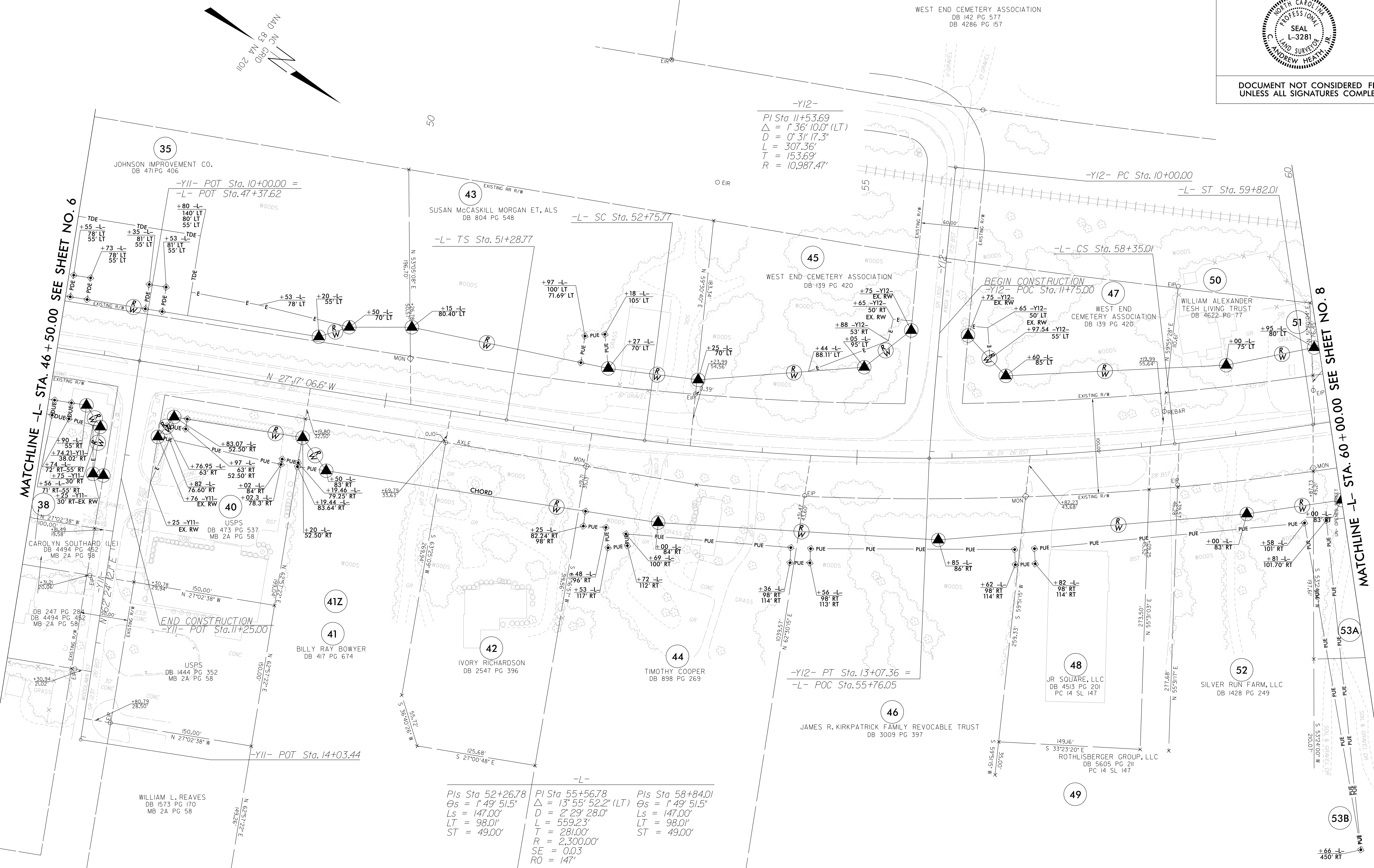
This 31st day of March, 2022.

C. Andrew Heath, Jr.
 Professional Land Surveyor L-3281

- NOTES:**
- IF FURTHER INFORMATION REGARDING PROJECT CONTROL IS NEEDED PLEASE CONTACT THE LOCATION AND SURVEYS UNIT.
 - PROJECT CONTROL WAS ESTABLISHED USING GNSS, THE GLOBAL NAVIGATION SATELLITE SYSTEM.
 - RIGHT OF WAY MONUMENTATION ESTABLISHED NOVEMBER 2021 TO MARCH 2022 .



WEST END CEMETERY ASSOCIATION
 DB 142 PG 577
 DB 4286 PG 157



REVISIONS

3-MAR-2022 08:28
 C:\p\601\2021\2021014.73\SUB\submit\1-5726.l.s.-rw07.dgn
 AT: NCCAP-GRANS100
 scott@carolina.com

-L-
 Pls Sta 52+26.78
 Δs = 1°49' 51.5"
 Ls = 147.00'
 LT = 98.01'
 ST = 49.00'

-L-
 Pls Sta 55+56.78
 Δ = 13°55' 52.2" (LT)
 D = 2°29' 28.0"
 L = 559.23'
 T = 281.00'
 R = 2,300.00'
 SE = 0.03
 RO = 147'

-L-
 Pls Sta 58+84.01
 Δs = 1°49' 51.5"
 Ls = 147.00'
 LT = 98.01'
 ST = 49.00'