



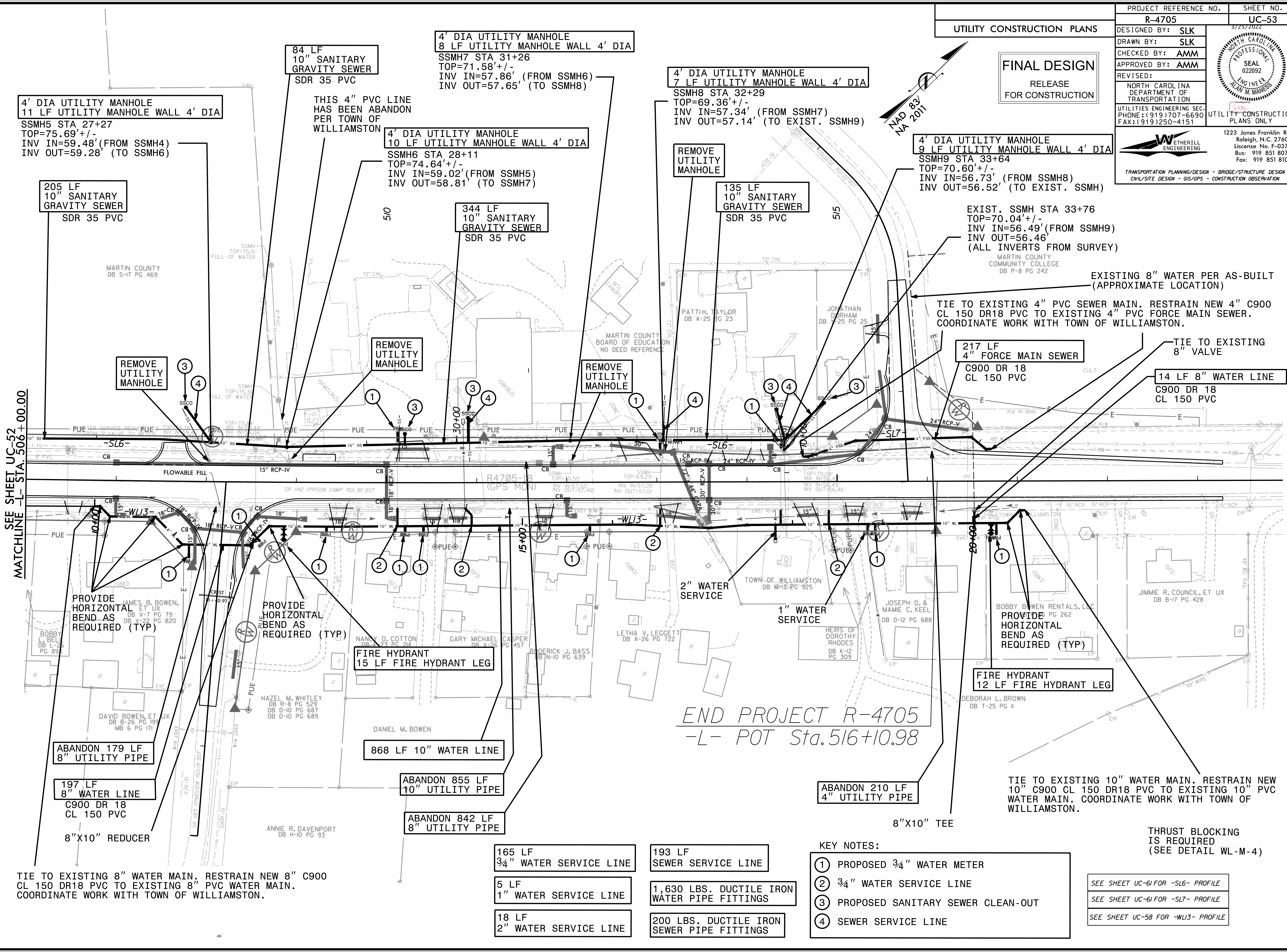
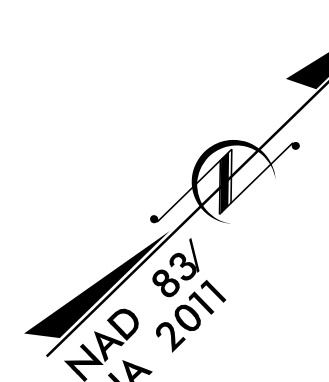
5/14/2022

| | | | |
|---|--|--|--|
| PROJECT REFERENCE NO. | | SHEET NO. | |
| R-4705 | | UC-53 | |
| DESIGNED BY: SLK | | | |
| DRAWN BY: SLK | | | |
| CHECKED BY: AMM | | | |
| APPROVED BY: AMM | | | |
| REVISED: | | | |
| NORTH CAROLINA DEPARTMENT OF TRANSPORTATION | |  | |
| UTILITIES ENGINEERING SEC. PHONE: (919) 707-6690 FAX: (919) 250-4151 | | UTILITY CONSTRUCTION PLANS ONLY | |
|  | | 1223 Jones Franklin Rd. Raleigh, N.C. 27606 License No. F-0377 Bus: 919 851 8077 Fax: 919 851 8107 | |
| TRANSPORTATION PLANNING/DESIGN - BRIDGE/STRUCTURE DESIGN CIVIL/SITE DESIGN - GIS/GPS - CONSTRUCTION OBSERVATION | | | |

UTILITY CONSTRUCTION PLANS

FINAL DESIGN

RELEASE FOR CONSTRUCTION



SEE SHEET UC-52
-L- STA 506+00.00

END PROJECT R-4705
-L- POT Sta. 516+10.98

- KEY NOTES:
- ① PROPOSED 3/4" WATER METER
 - ② 3/4" WATER SERVICE LINE
 - ③ PROPOSED SANITARY SEWER CLEAN-OUT
 - ④ SEWER SERVICE LINE

SEE SHEET UC-61 FOR -SL6- PROFILE
SEE SHEET UC-61 FOR -SL7- PROFILE
SEE SHEET UC-58 FOR -WL3- PROFILE

THRUST BLOCKING IS REQUIRED (SEE DETAIL WL-M-4)

TIE TO EXISTING 8" WATER MAIN. RESTRAIN NEW 8" C900 CL 150 DR18 PVC TO EXISTING 8" PVC WATER MAIN. COORDINATE WORK WITH TOWN OF WILLIAMSTON.

TIE TO EXISTING 10" WATER MAIN. RESTRAIN NEW 10" C900 CL 150 DR18 PVC TO EXISTING 10" PVC WATER MAIN. COORDINATE WORK WITH TOWN OF WILLIAMSTON.

- 165 LF 3/4" WATER SERVICE LINE
- 5 LF 1" WATER SERVICE LINE
- 18 LF 2" WATER SERVICE LINE
- 193 LF SEWER SERVICE LINE
- 1,630 LBS. DUCTILE IRON WATER PIPE FITTINGS
- 200 LBS. DUCTILE IRON SEWER PIPE FITTINGS

REVISIONS

3/23/2022
UC53.dwg
ETHERILL ENGINEERING