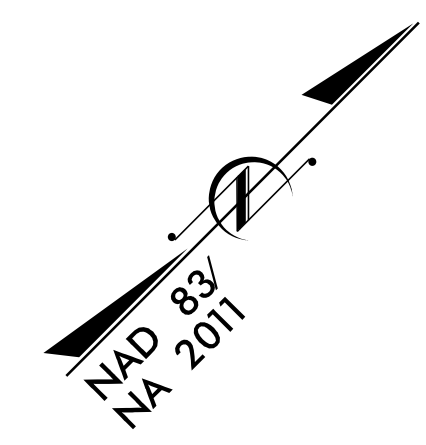


5/14/2022

UTILITY CONSTRUCTION PLANS		PROJECT REFERENCE NO. R-4705	SHEET NO. UC-49
DESIGNED BY: SLK		3/25/2022	
DRAWN BY: SLK		NORTH CAROLINA PROFESSIONAL SEAL 022092	
CHECKED BY: AMM		NORTH CAROLINA DEPARTMENT OF TRANSPORTATION	
APPROVED BY: AMM		UTILITIES ENGINEERING SEC. PHONE: (919) 707-6690 FAX: (919) 250-4151	
REVISED:		UTILITY CONSTRUCTION PLANS ONLY	
NORTH CAROLINA DEPARTMENT OF TRANSPORTATION		1223 Jones Franklin Rd. Raleigh, N.C. 27606 License No. F-0377 Bus: 919 851 8077 Fax: 919 851 8107	
ETHERILL ENGINEERING		TRANSPORTATION PLANNING/DESIGN - BRIDGE/STRUCTURE DESIGN CIVIL/SITE DESIGN - GIS/GPS - CONSTRUCTION OBSERVATION	

FINAL DESIGN
RELEASE
FOR CONSTRUCTION



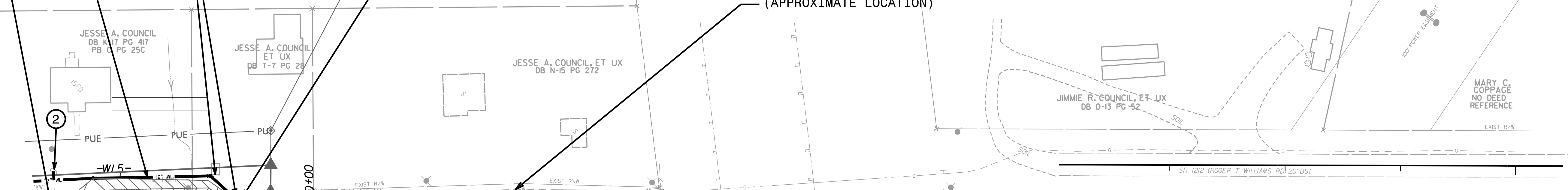
ABANDON 179 LF
12" UTILITY PIPE

188 LF
12" WATER LINE
C900 DR 18
CL 150 PVC

PROVIDE
HORIZONTAL
BEND AS
REQUIRED (TYP)

TIE TO EXISTING 12" PVC WATER MAIN. RESTRAIN NEW
12" C900 DR 18 PC 150 PVC TO EXISTING.
COORDINATE WORK WITH TOWN OF WILLIAMSTON.

EXISTING 12"
PVC WATER LINE
(APPROXIMATE LOCATION)



SEE SHEET UC-48
MATCHLINE -L- STA. 454+00.00

MATCHLINE -R- STA. 467+00.00
SEE SHEET UC-50

PROVIDE
HORIZONTAL
BEND AS
REQUIRED (TYP)

EXISTING 6"
PVC SEWER LINE
(APPROXIMATE LOCATION)

TIE TO EXISTING 6" PVC SEWER MAIN. RESTRAIN NEW 6" C900
CL 150 DR18 PVC TO EXISTING 6" PVC FORCE MAIN SEWER.
COORDINATE WORK WITH TOWN OF WILLIAMSTON.

249 LF
6" FORCE MAIN SEWER
C900 DR 18
CL 150 PVC

ABANDON 242 LF
6" UTILITY PIPE

- KEY NOTES:
- ① PROPOSED 3/4" WATER METER
 - ② 3/4" WATER SERVICE LINE
 - ③ PROPOSED SANITARY SEWER CLEAN-OUT
 - ④ SEWER SERVICE LINE

SEE SHEET UC-55 FOR -W-5- PROFILE
SEE SHEET UC-59 FOR -S-1- PROFILE

8 LF
3/4" WATER SERVICE LINE

650 LBS. DUCTILE IRON
WATER PIPE FITTINGS

150 LBS. DUCTILE IRON
SEWER PIPE FITTINGS

THRUST BLOCKING
IS REQUIRED
(SEE DETAIL WL-M-4)

REVISIONS

3/24/2022
UC49.dwg
UC49.dwg