

PREPARED IN THE OFFICE OF:



THE WOOTEN COMPANY
301 West 14th Street, Greensboro, NC 27404
252.752.0096 Fax: 252.752.0221
License Number: F-1033

PROJECT REFERENCE NO.

R-4705

SHEET NO.

UC-27

DESIGNED BY: DCS

DRAWN BY: TK8TH

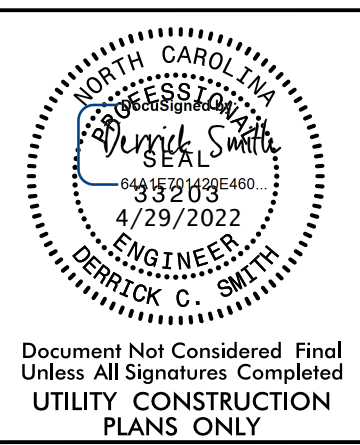
CHECKED BY: DCS

APPROVED BY: DCS

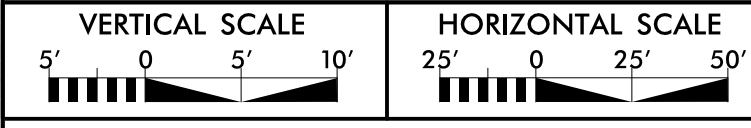
REVISED: 3-18-2022

NORTH CAROLINA
DEPARTMENT OF
TRANSPORTATION

UTILITIES ENGINEERING SEC.
PHONE: (919) 707-6690
FAX: (919) 250-4151



Document Not Considered Final
Unless All Signatures Completed
UTILITY CONSTRUCTION
PLANS ONLY



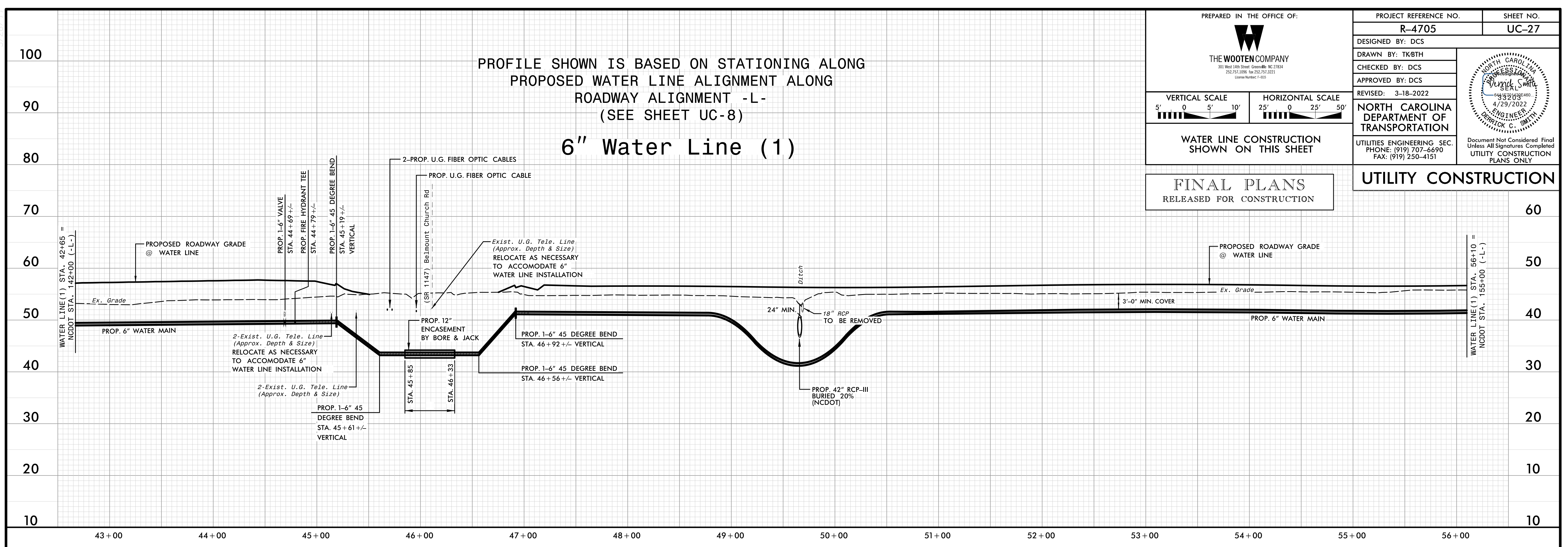
WATER LINE CONSTRUCTION
SHOWN ON THIS SHEET

FINAL PLANS
RELEASED FOR CONSTRUCTION

UTILITY CONSTRUCTION

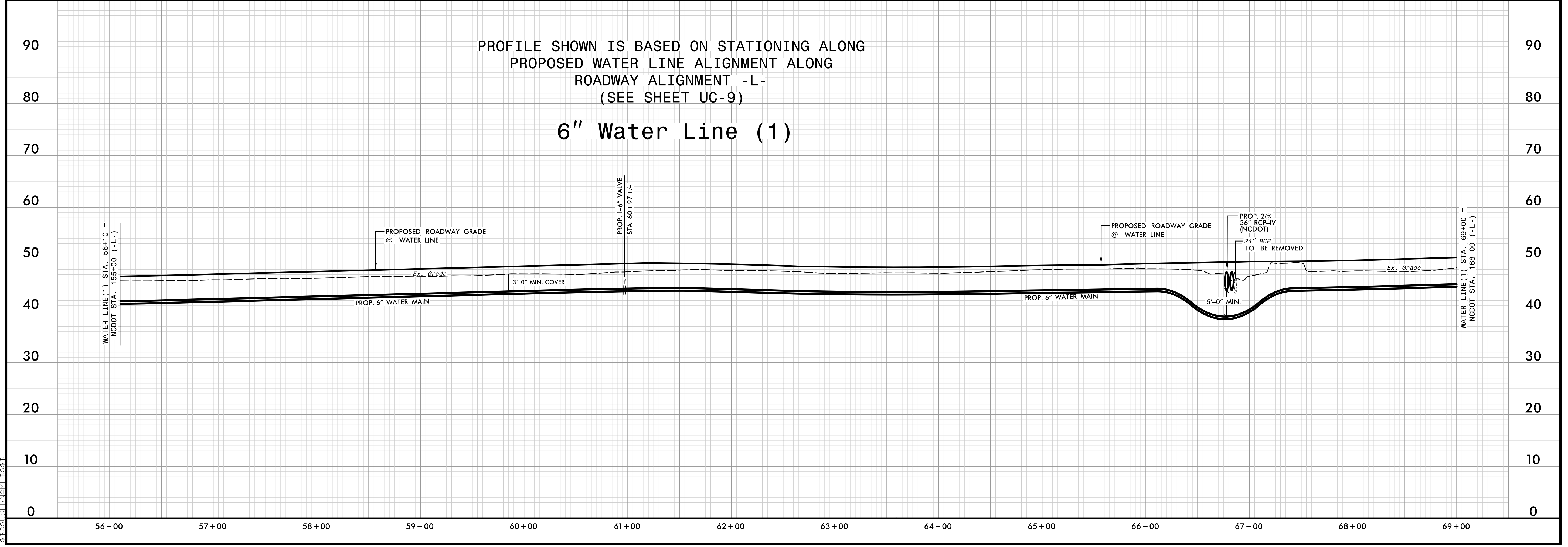
PROFILE SHOWN IS BASED ON STATIONING ALONG
PROPOSED WATER LINE ALIGNMENT ALONG
ROADWAY ALIGNMENT -L-
(SEE SHEET UC-8)

6" Water Line (1)



PROFILE SHOWN IS BASED ON STATIONING ALONG
PROPOSED WATER LINE ALIGNMENT ALONG
ROADWAY ALIGNMENT -L-
(SEE SHEET UC-9)

6" Water Line (1)



UC-27-UC-28