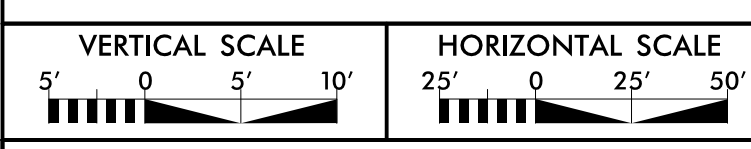
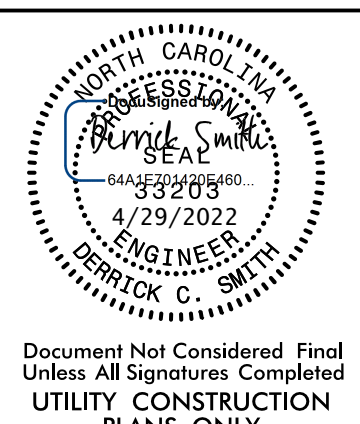


PREPARED IN THE OFFICE OF:



PROJECT REFERENCE NO. **R-4705** SHEET NO. **UC-24**

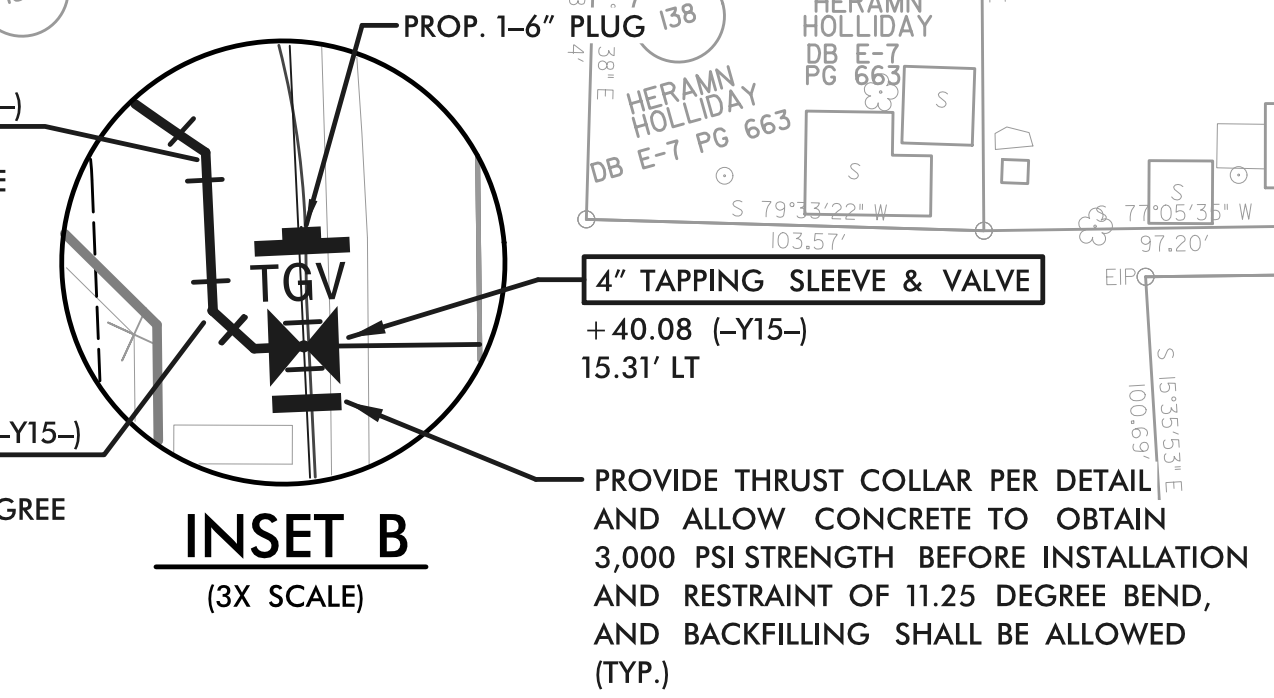
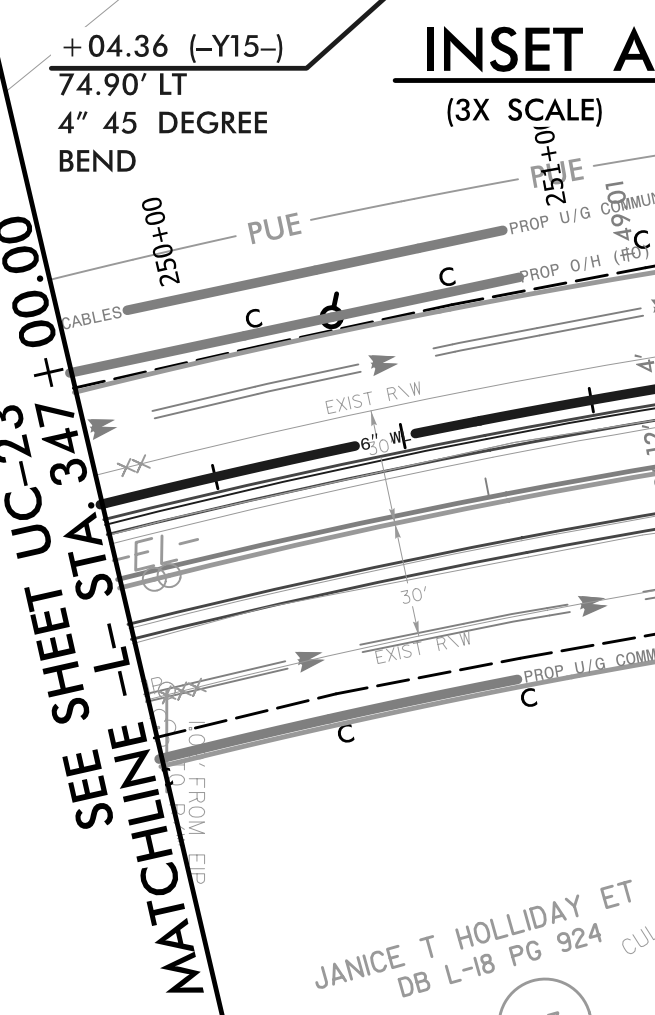
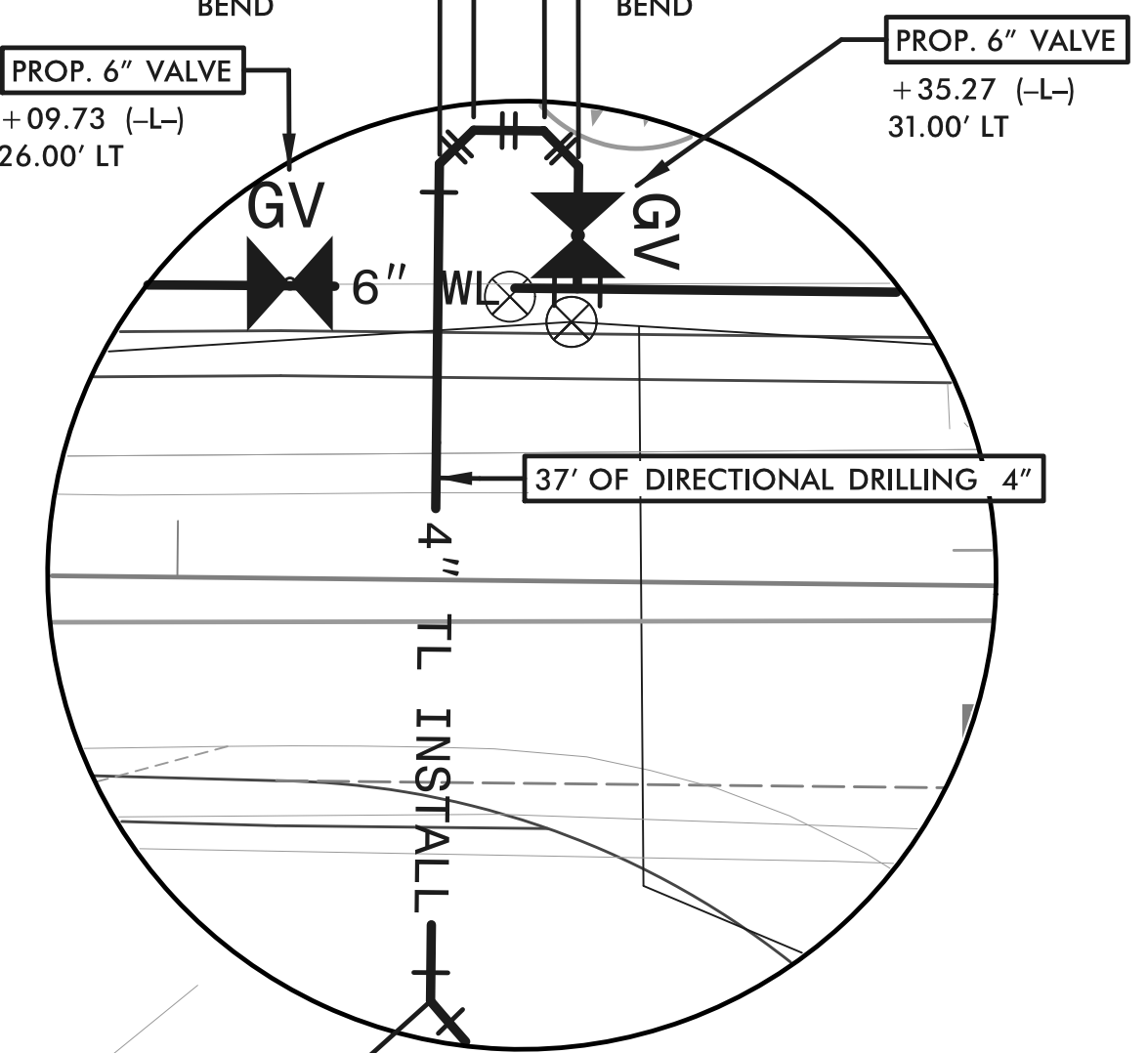
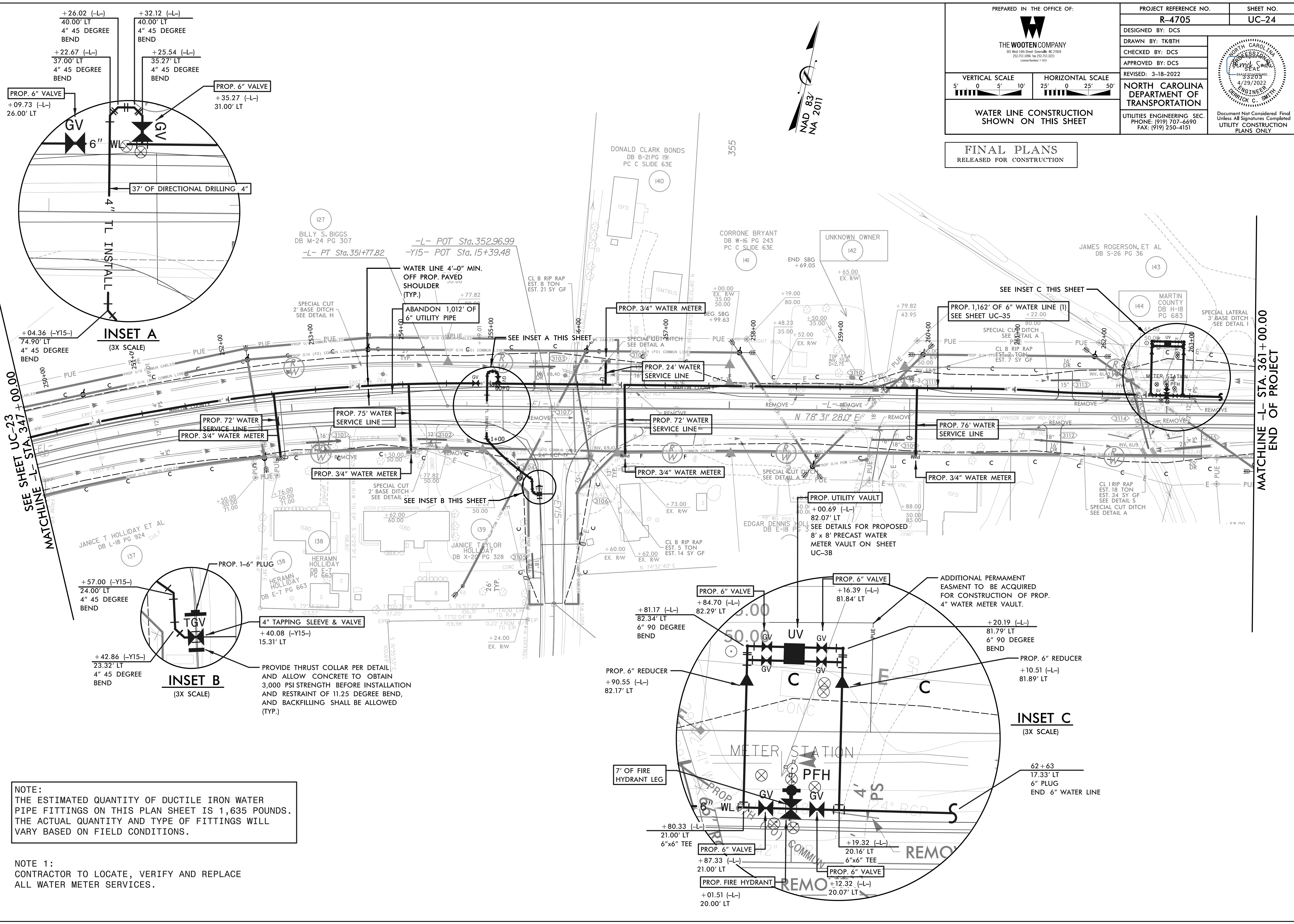
DESIGNED BY: DCS
 DRAWN BY: TK8TH
 CHECKED BY: DCS
 APPROVED BY: DCS
 REVISED: 3-18-2022
NORTH CAROLINA DEPARTMENT OF TRANSPORTATION
 UTILITIES ENGINEERING SEC.
 PHONE: (919) 707-6690
 FAX: (919) 250-4151



WATER LINE CONSTRUCTION SHOWN ON THIS SHEET

FINAL PLANS
RELEASED FOR CONSTRUCTION

5/14/1999



NOTE:
THE ESTIMATED QUANTITY OF DUCTILE IRON WATER PIPE FITTINGS ON THIS PLAN SHEET IS 1,635 POUNDS. THE ACTUAL QUANTITY AND TYPE OF FITTINGS WILL VARY BASED ON FIELD CONDITIONS.

NOTE 1:
CONTRACTOR TO LOCATE, VERIFY AND REPLACE ALL WATER METER SERVICES.

MATCHLINE -L- STA. 361+00.00
END OF PROJECT