
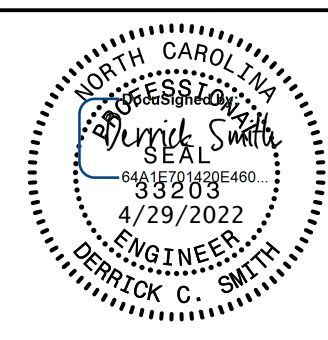


5/14/99

PREPARED IN THE OFFICE OF:  
  
**THE WOOTEN COMPANY**  
301 West 14th Street, Greenville, NC 27834  
 252.732.0196 Fax 252.732.3221  
 License Number: F-025

PROJECT REFERENCE NO. <b>R-4705</b>	SHEET NO. <b>UC-22</b>
DESIGNED BY: DCS	
DRAWN BY: TK8TH	
CHECKED BY: DCS	
APPROVED BY: DCS	
REVISED: 3-18-2022	
	
<b>NORTH CAROLINA DEPARTMENT OF TRANSPORTATION</b> <small>UTILITIES ENGINEERING SEC.        PHONE: (919) 707-6690        FAX: (919) 250-4151</small>	

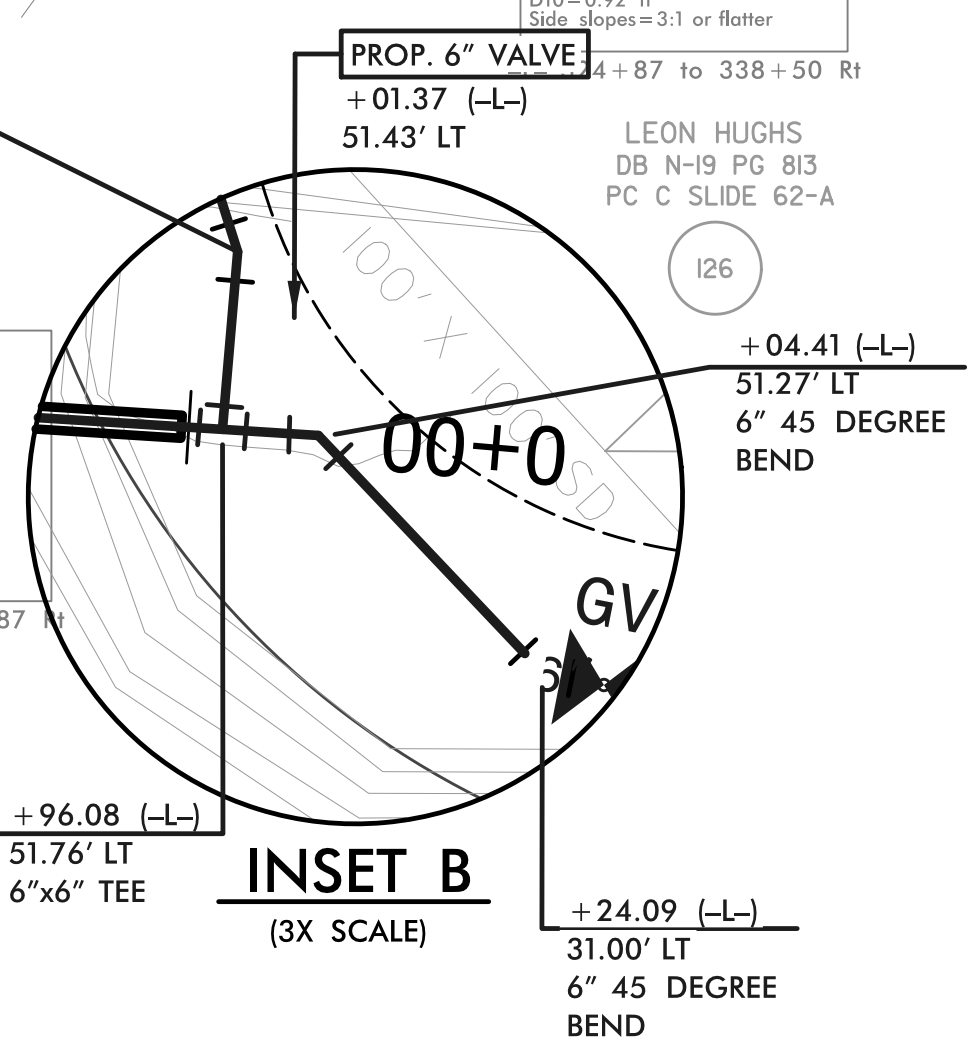
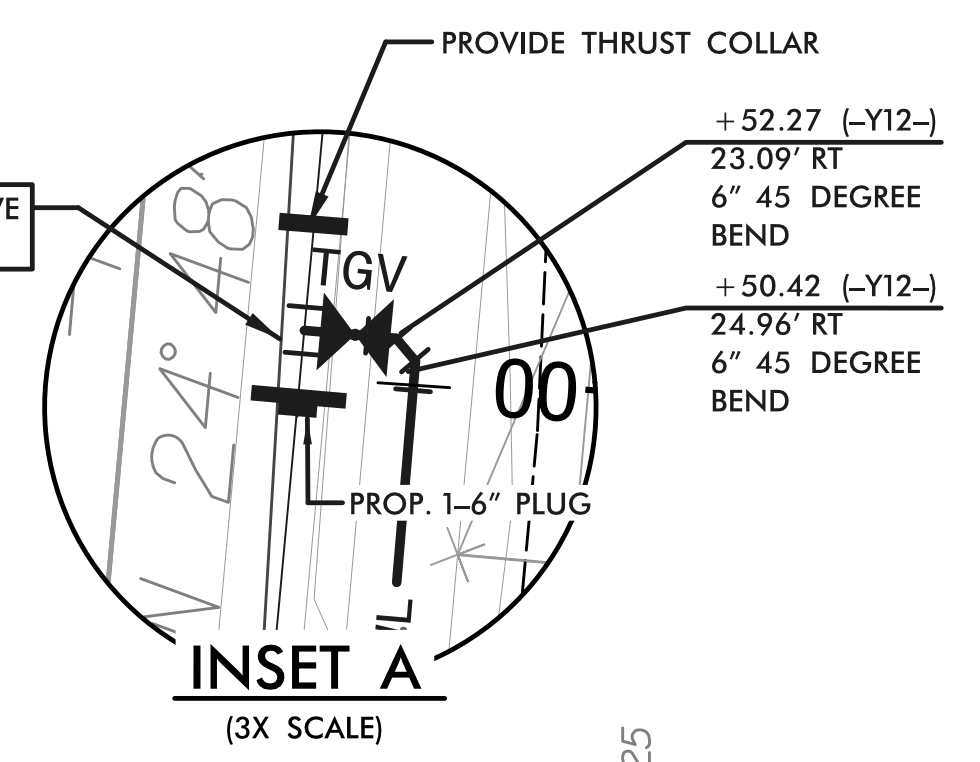
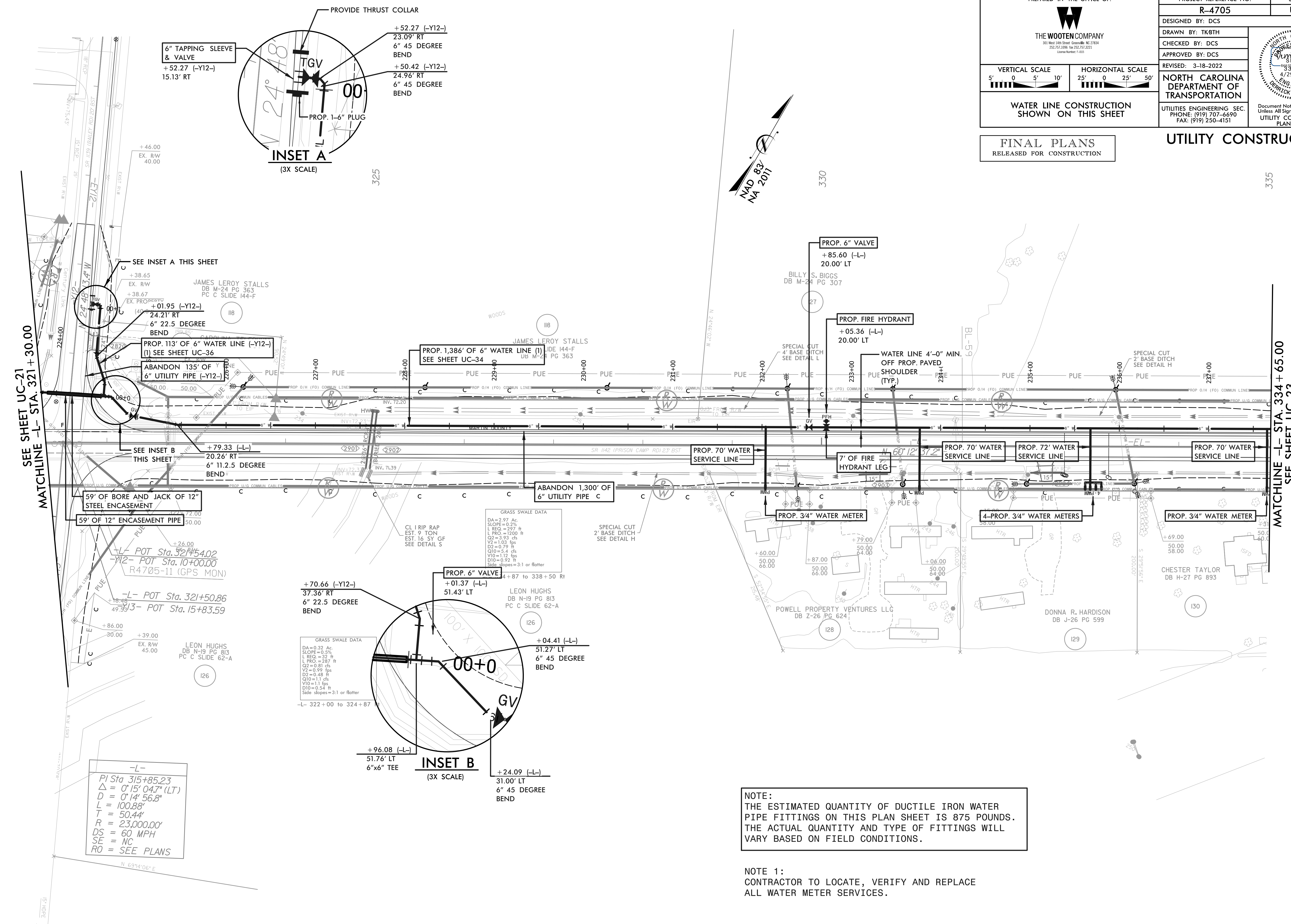
Document Not Considered Final Unless All Signatures Completed  
 UTILITY CONSTRUCTION PLANS ONLY

VERTICAL SCALE: 5' 0 5' 10'  
 HORIZONTAL SCALE: 25' 0 25' 50'

**WATER LINE CONSTRUCTION SHOWN ON THIS SHEET**

**FINAL PLANS**  
 RELEASED FOR CONSTRUCTION

**UTILITY CONSTRUCTION**



-L-  
 PI Sta 315+85.23  
 Δ = 0° 15' 04.7" (LT)  
 D = 0° 14' 56.8"  
 L = 100.88'  
 T = 50.44'  
 R = 23,000.00'  
 DS = 60 MPH  
 SE = NC  
 RO = SEE PLANS

**NOTE:**  
 THE ESTIMATED QUANTITY OF DUCTILE IRON WATER PIPE FITTINGS ON THIS PLAN SHEET IS 875 POUNDS. THE ACTUAL QUANTITY AND TYPE OF FITTINGS WILL VARY BASED ON FIELD CONDITIONS.

**NOTE 1:**  
 CONTRACTOR TO LOCATE, VERIFY AND REPLACE ALL WATER METER SERVICES.

SEE SHEET UC-21  
 MATCHLINE -L- STA. 321 + 30.00

MATCHLINE -L- STA. 334 + 65.00  
 SEE SHEET UC-23

5/14/99