

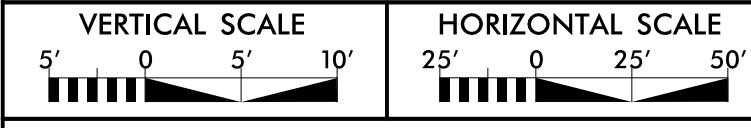
5/14/99

PREPARED IN THE OFFICE OF:



THE WOOTEN COMPANY
301 West 14th Street, Greensboro, NC 27404
252.732.0100 Fax: 252.732.0211
Licenses: 1-020

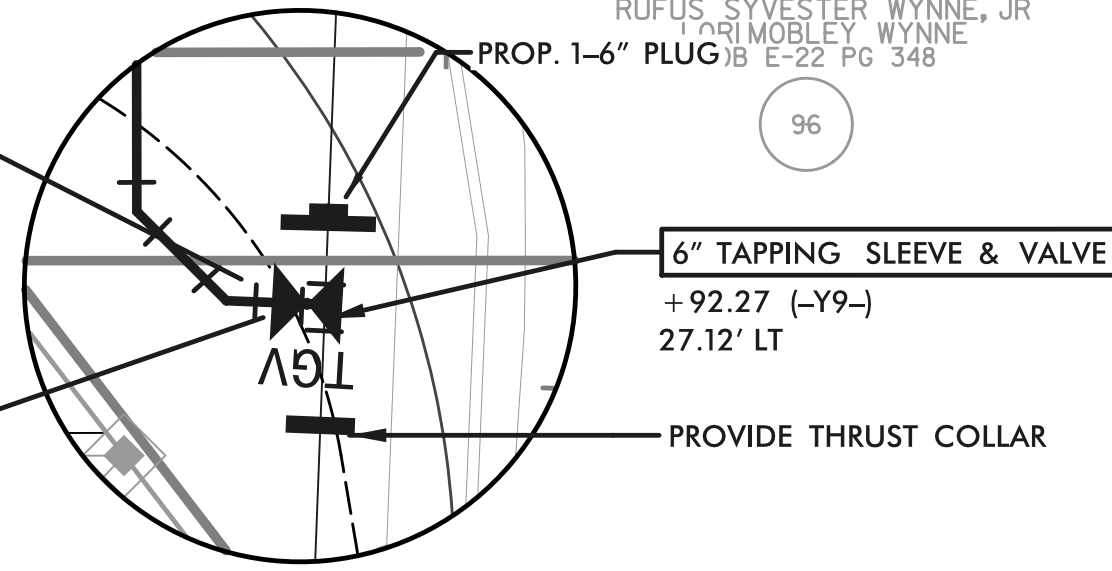
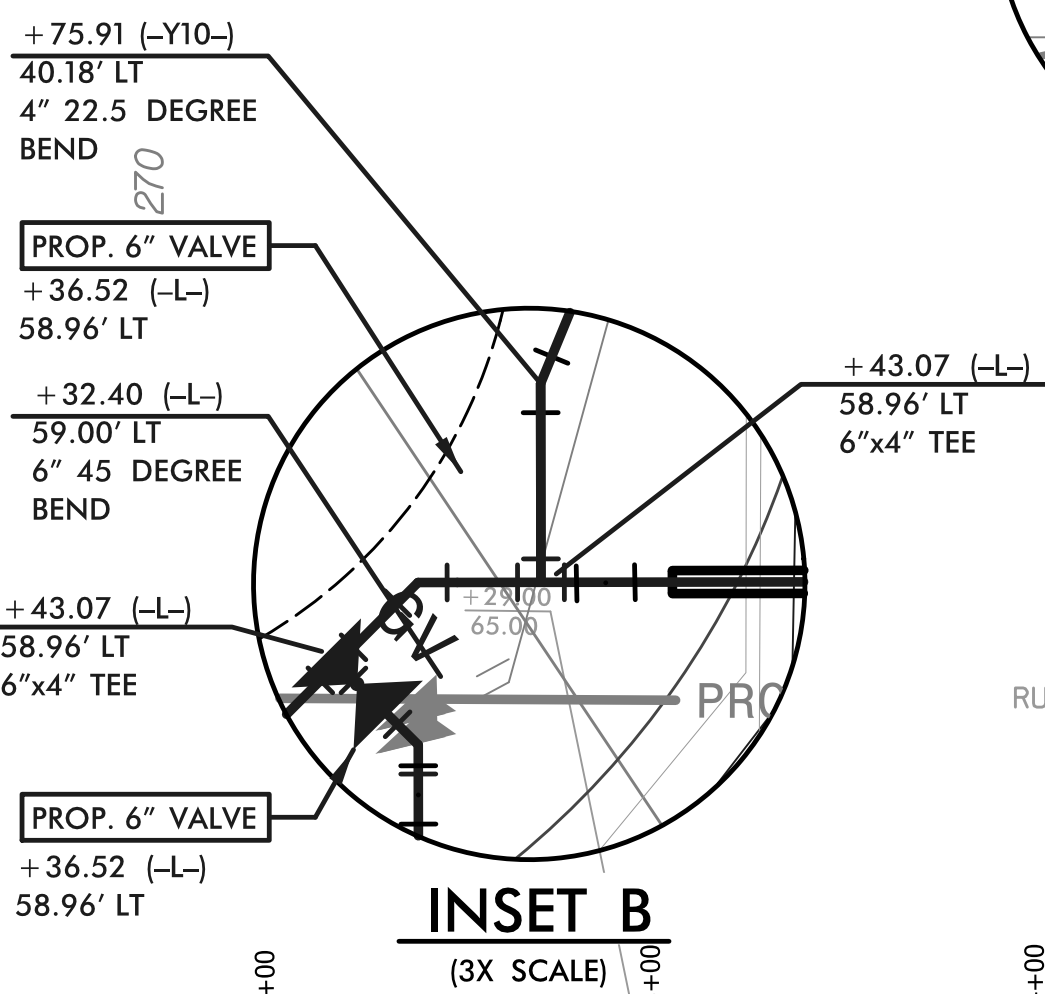
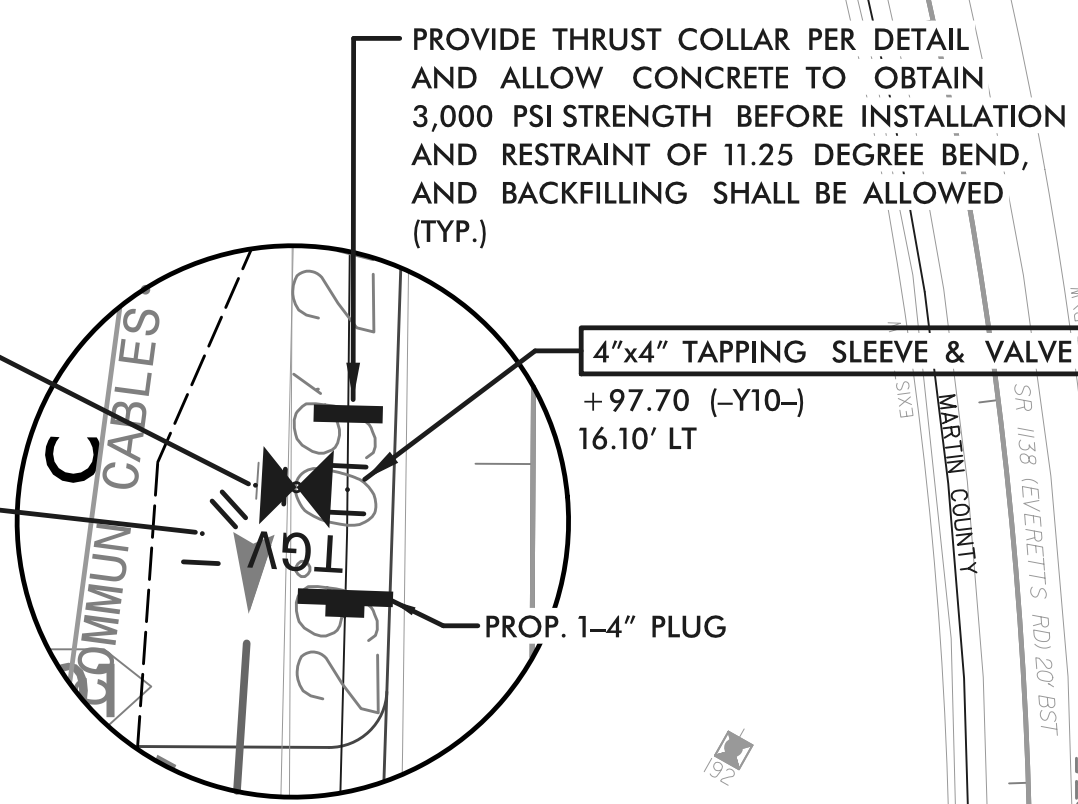
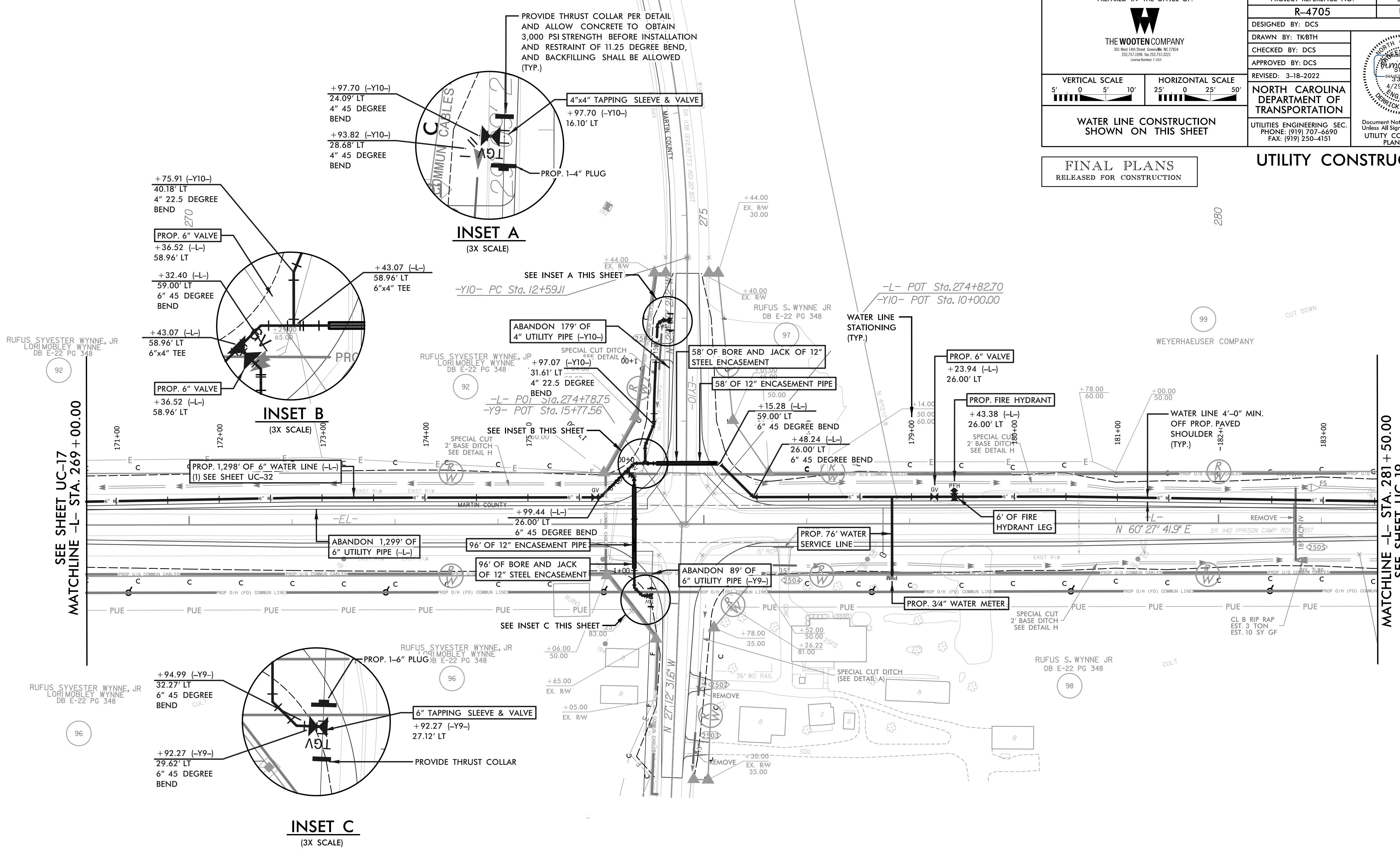
PROJECT REFERENCE NO. R-4705	SHEET NO. UC-18
DESIGNED BY: DCS	
DRAWN BY: TK8TH	
CHECKED BY: DCS	
APPROVED BY: DCS	
REVISED: 3-18-2022	
NORTH CAROLINA DEPARTMENT OF TRANSPORTATION UTILITIES ENGINEERING SEC. PHONE: (919) 707-6690 FAX: (919) 250-4151	
Document Not Considered Final Unless All Signatures Completed UTILITY CONSTRUCTION PLANS ONLY	



WATER LINE CONSTRUCTION SHOWN ON THIS SHEET

FINAL PLANS
RELEASED FOR CONSTRUCTION

UTILITY CONSTRUCTION



NOTE:
 THE ESTIMATED QUANTITY OF DUCTILE IRON WATER PIPE FITTINGS ON THIS PLAN SHEET IS 1,355 POUNDS. THE ACTUAL QUANTITY AND TYPE OF FITTINGS WILL VARY BASED ON FIELD CONDITIONS.

NOTE 1:
 CONTRACTOR TO LOCATE, VERIFY AND REPLACE ALL WATER METER SERVICES.

5/14/99