
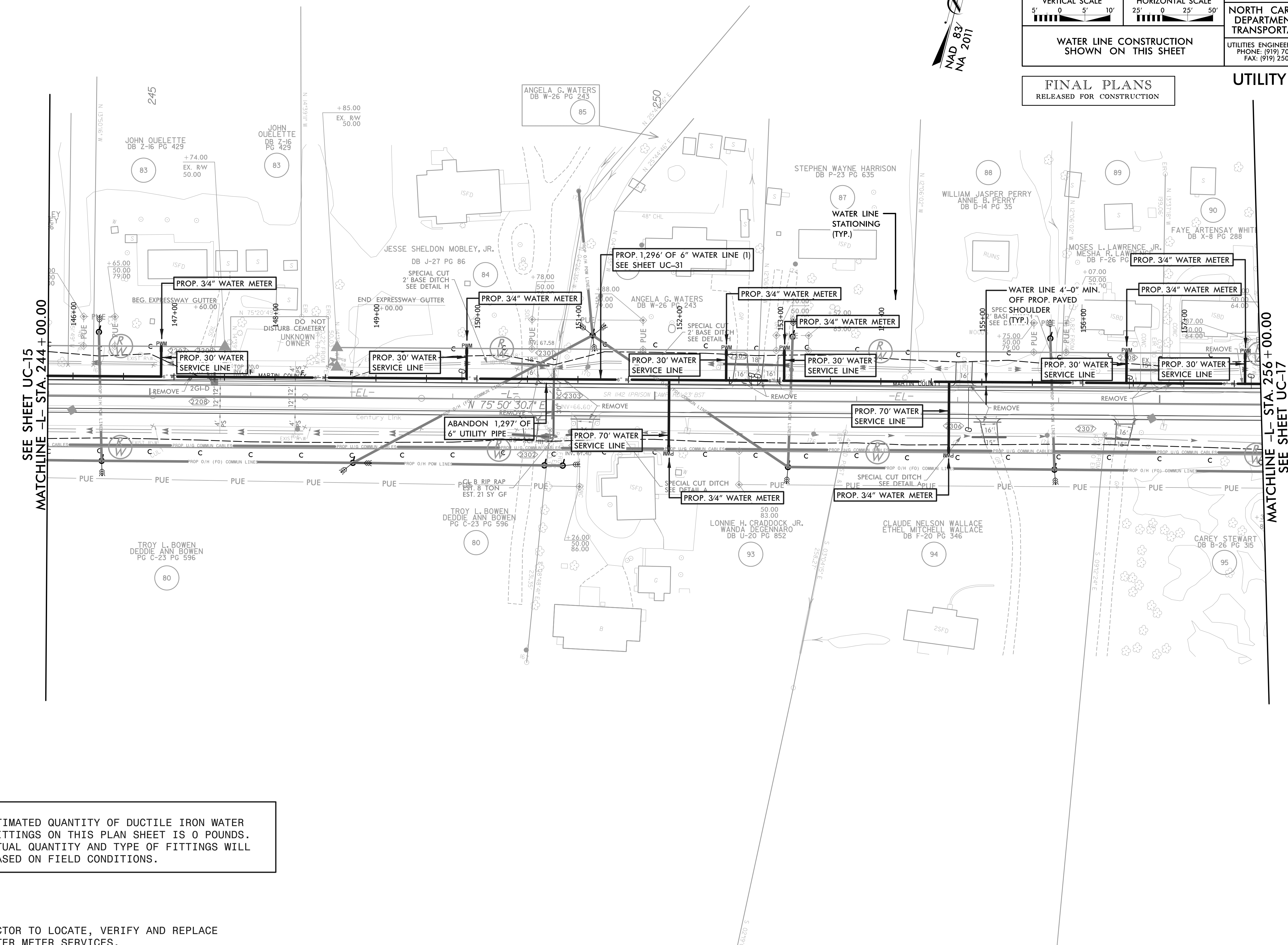


PREPARED IN THE OFFICE OF:  THE WOOTEN COMPANY <small>301 West 14th Street, Greensboro, NC 27404 (336) 272-0096 Fax: (336) 272-3221 License Number: F-4025</small>	PROJECT REFERENCE NO. R-4705	SHEET NO. UC-16
	DESIGNED BY: DCS DRAWN BY: TK8TH CHECKED BY: DCS APPROVED BY: DCS REVISED: 3-18-2022 NORTH CAROLINA DEPARTMENT OF TRANSPORTATION UTILITIES ENGINEERING SEC. PHONE: (919) 707-6690 FAX: (919) 250-4151	

FINAL PLANS
RELEASED FOR CONSTRUCTION

UTILITY CONSTRUCTION

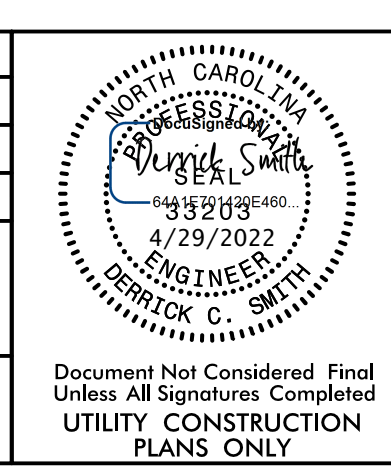
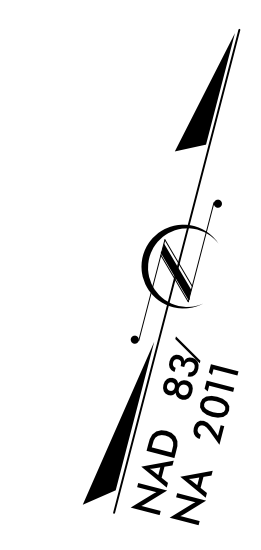


SEE SHEET UC-15
MATCHLINE -L- STA. 244 + 00.00

MATCHLINE -L- STA. 256 + 00.00
SEE SHEET UC-17

NOTE:
THE ESTIMATED QUANTITY OF DUCTILE IRON WATER PIPE FITTINGS ON THIS PLAN SHEET IS 0 POUNDS. THE ACTUAL QUANTITY AND TYPE OF FITTINGS WILL VARY BASED ON FIELD CONDITIONS.

NOTE 1:
CONTRACTOR TO LOCATE, VERIFY AND REPLACE ALL WATER METER SERVICES.



Document Not Considered Final
Unless All Signatures Completed
UTILITY CONSTRUCTION
PLANS ONLY